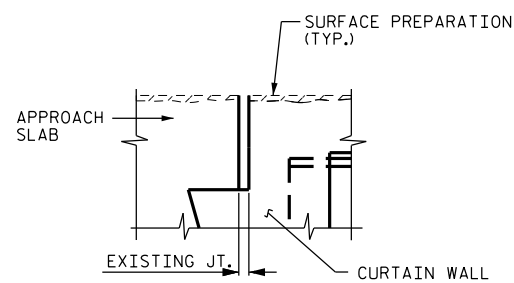
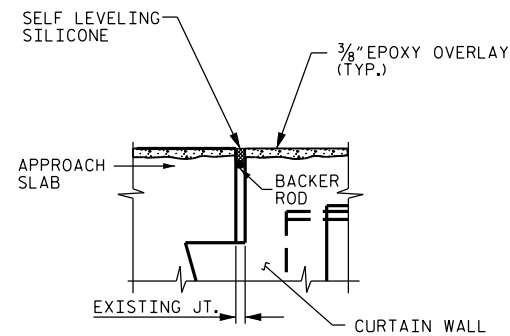


EXISTING JOINT



MINIMUM EXISTING JOINT DEMOLITION



PROPOSED JOINT

**NOTES:**

CONTRACTOR SHALL FIELD VERIFY THE EXISTING FORMED OPENING PRIOR TO OBTAINING JOINT MATERIAL.

FOR FOAM JOINT SEALS, SEE SPECIAL PROVISIONS.

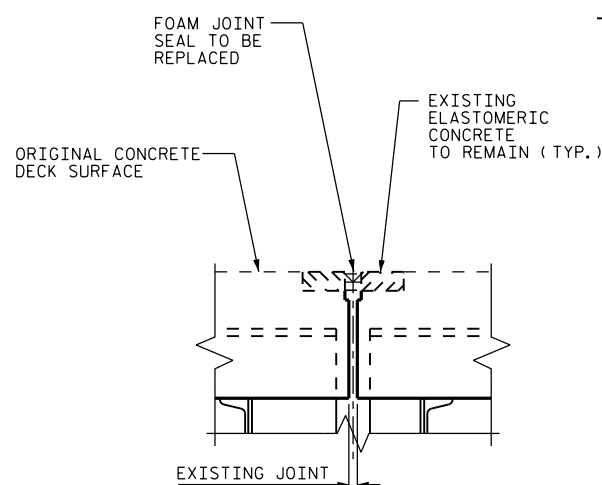
FOR ELASTOMERIC CONCRETE, SEE SPECIAL PROVISIONS.

RETAIN ALL EXISTING REINFORCING STEEL. CLEAN AND REPAIR AS NEEDED.

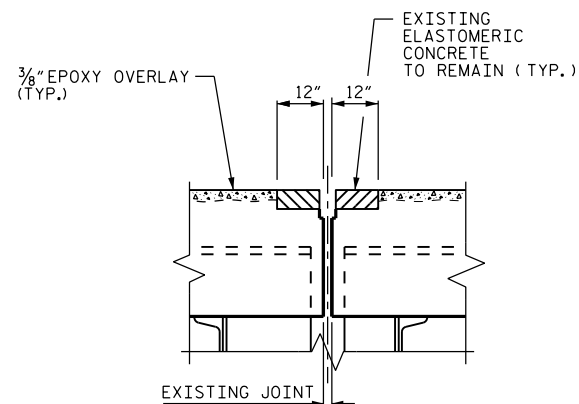
THE WIDTH OF THE UNCOMPRESSED FOAM JOINT MATERIAL SHALL BE 2 3/4\"/>

JOINT INSTALLATION SEQUENCE AT END BENTS

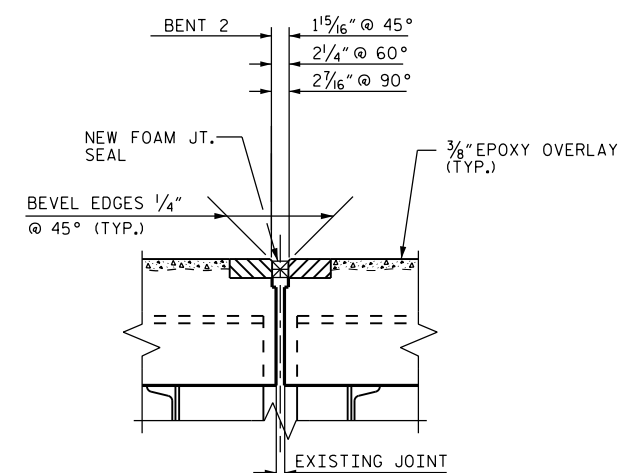
SECTION A-A



EXISTING JOINT



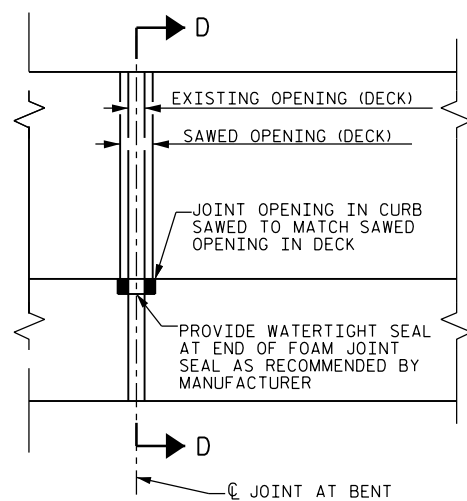
EXISTING FOAM JOINT SEAL REMOVED



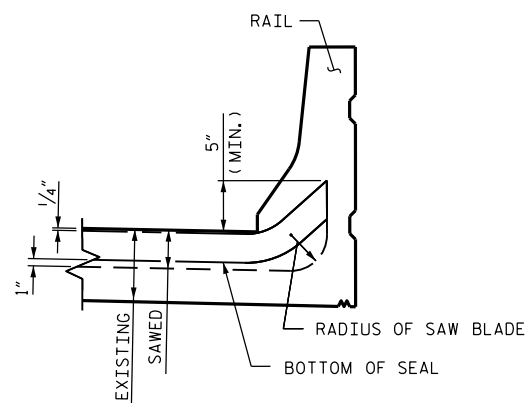
PROPOSED FOAM JOINT SEAL INSTALLATION

JOINT INSTALLATION SEQUENCE AT BENTS

SECTION B-B



PLAN



SECTION D-D

PROJECT NO. I-5731  
CUMBERLAND COUNTY  
 BRIDGE NO.: 133 & 134

DocuSigned by:  
*Farzin Asefma*  
 NORTH CAROLINA  
 PROFESSIONAL  
 SEAL  
 20103  
 ENGINEER  
 FARZIN ASEFMA  
 4/14/2016

STATE OF NORTH CAROLINA  
 DEPARTMENT OF TRANSPORTATION  
 RALEIGH  
 SUPERSTRUCTURE  
 JOINT DETAILS

DRAWN BY : D.V. JOYNER DATE : 1/2016  
 CHECKED BY : W. SMITH DATE : 1/2016

DOCUMENT NOT CONSIDERED  
 FINAL UNLESS ALL  
 SIGNATURES COMPLETED

REVISIONS						SHEET NO.
NO.	BY:	DATE:	NO.	BY:	DATE:	S-36
1			3			TOTAL SHEETS
2			4			37