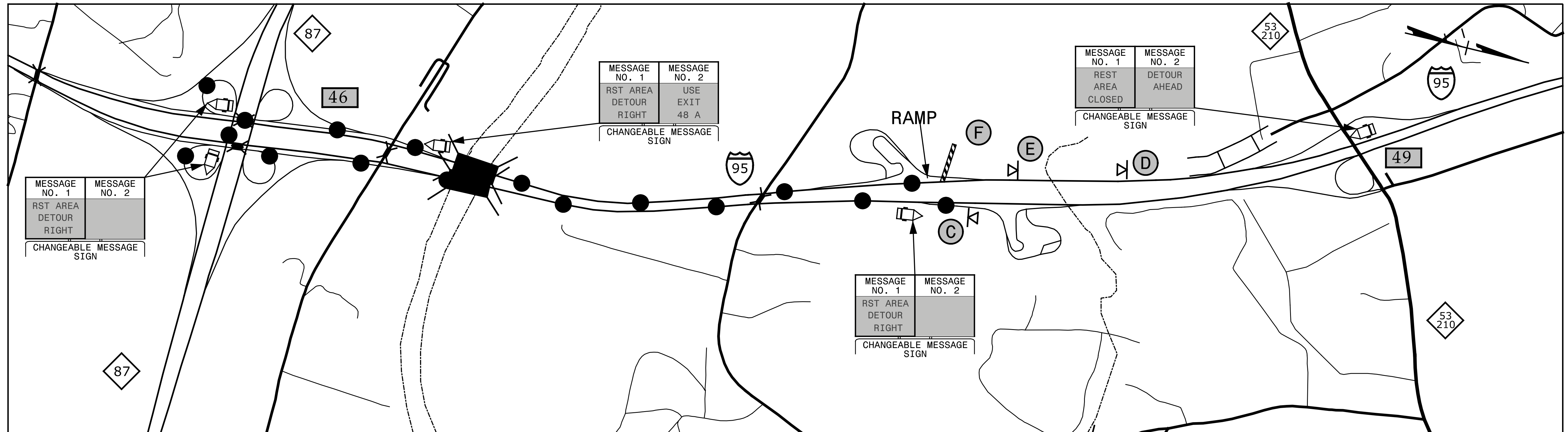
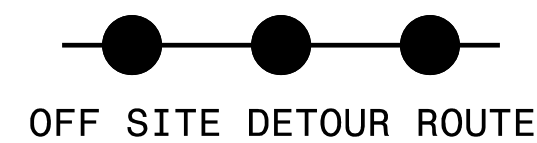
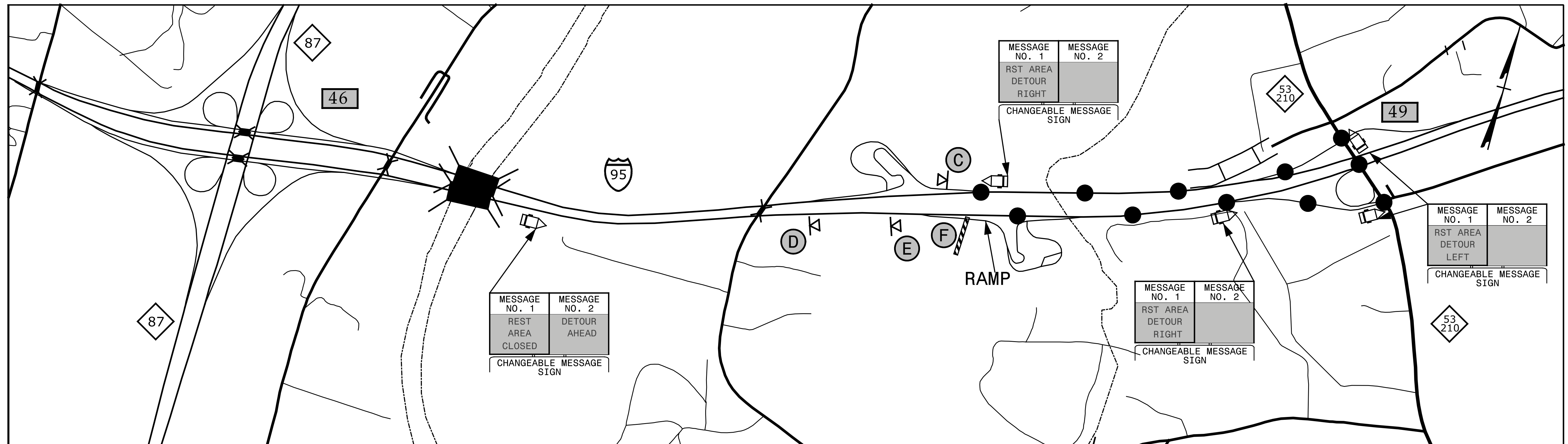


# REST AREA - I-95 NORTHBOUND

PROJ. REFERENCE NO.	SHEET NO.
I-5731	TMP-13



# REST AREA - I-95 SOUTHBOUND



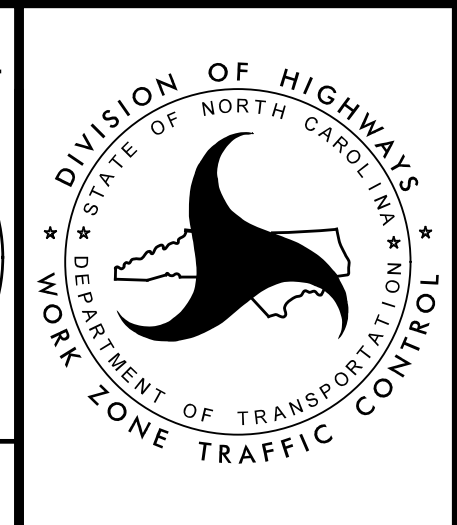
NOTE: 1. SEE TMP-2B FOR SIGN LEGEND  
2. SEE TMP-3 FOR RAMP CLOSURE

**SEPI**  
ENGINEERING & CONSTRUCTION  
1025 Wade Avenue  
Raleigh, NC 27605  
Tel: 919-789-9977  
Fax: 919-789-9591  
License: C-2197

APPROVED: *Steve Miller*  
DATE: 2/29/2016

SEAL

**DOCUMENT NOT CONSIDERED FINAL  
UNLESS ALL SIGNATURES COMPLETED**



**REST AREA  
DETOUR**

2/4/2016 G:\Transportation\TRI3.017.00 NCDOT 2012 Traffic LSA\TRI3.017.07 (I-5731)\TMP\I-5731\TMP-13.dgn