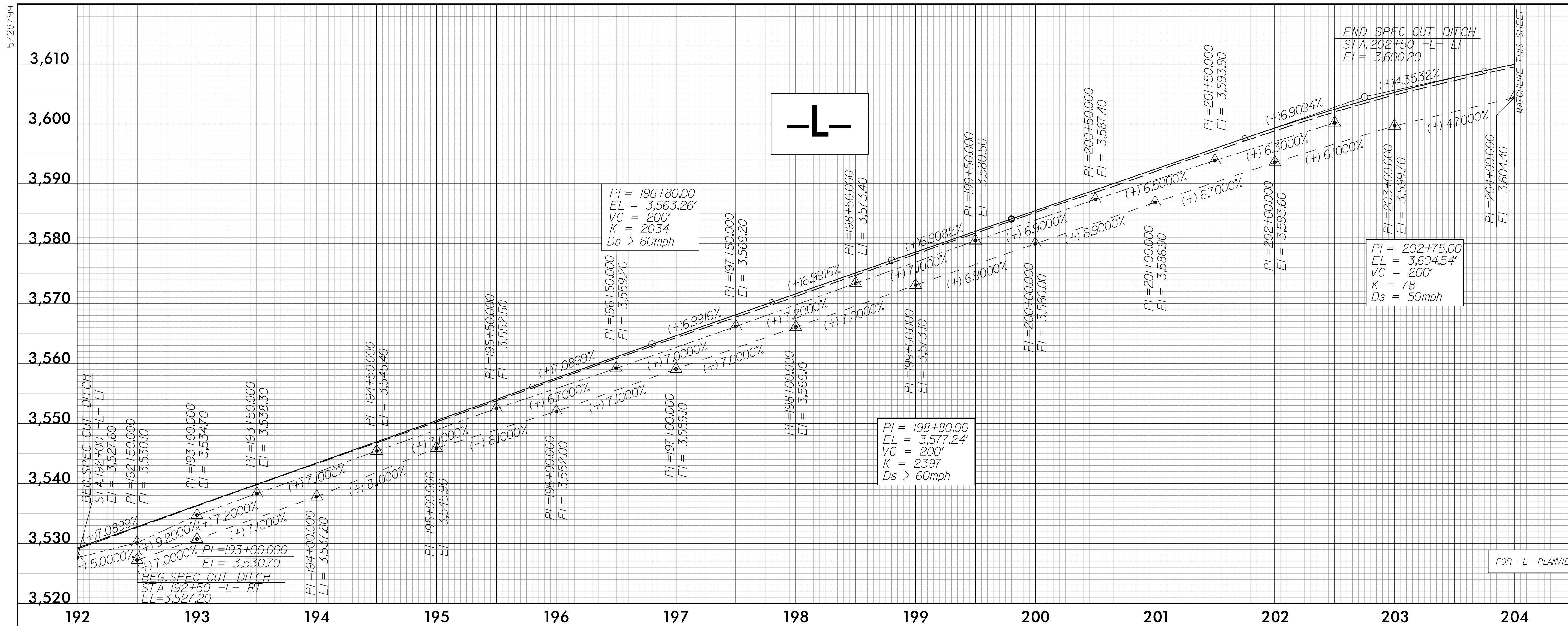
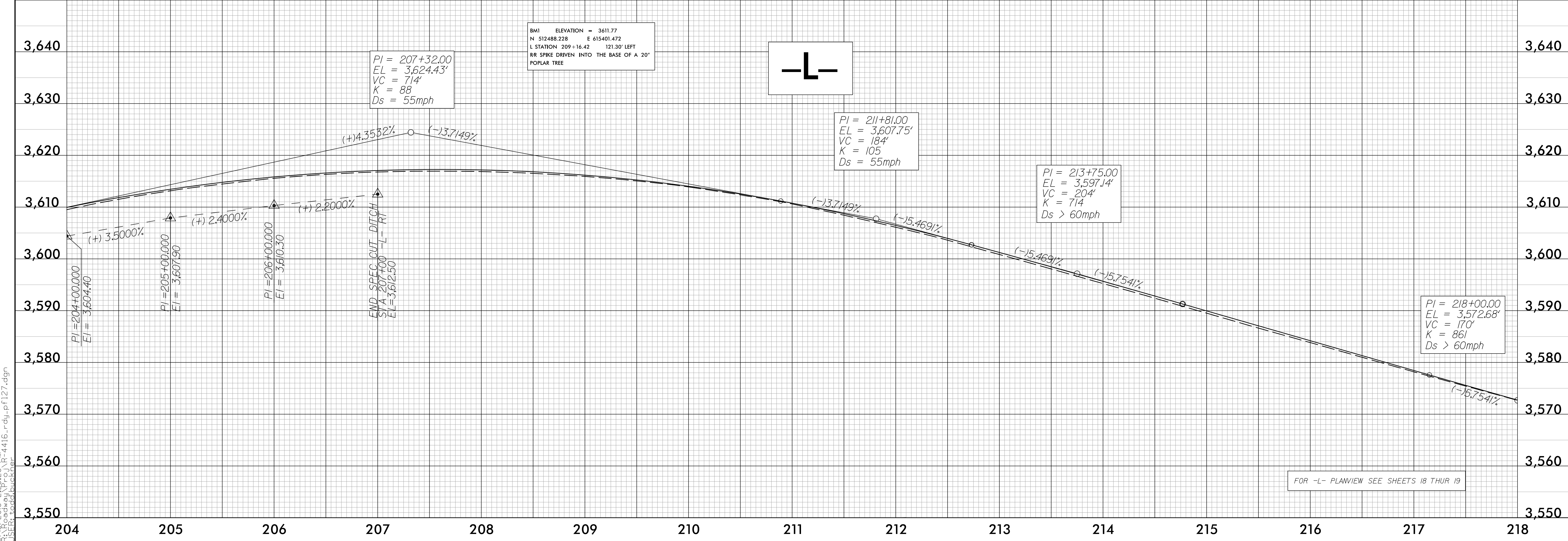


PROJECT REFERENCE NO. R-4416	SHEET NO. 27
ROADWAY DESIGN ENGINEER NORTH CAROLINA PROFESSIONAL SEAL 034367 FOR H. BUCKNER 2/18/2016	HYDRAULICS ENGINEER NORTH CAROLINA PROFESSIONAL SEAL 20870 MARC T. SHOWN 2/18/2016
Michael Baker Engineering, Inc. 8000 Regency Park Suite 600 Cary, NC 27518 INTERNATIONAL NC License: P-11084	NC DEPARTMENT OF TRANSPORTATION HYDRAULICS UNIT 1500 MAIL SERVICE CENTER RALEIGH, NC 27699-1600
DOCUMENT NOT CONSIDERED FINAL UNLESS ALL SIGNATURES COMPLETED	



FOR -L- PLANVIEW SEE SHEETS 17 THUR 18



B.M. ELEVATION = 3611.77
 N 512488.228 E 615401.472
 L STATION 209+16.42 121.30' LEFT
 RR SPIKE DRIVEN INTO THE BASE OF A 20"
 POPLAR TREE

FOR -L- PLANVIEW SEE SHEETS 18 THUR 19

5/28/99

2/18/2016 2:28:28 PM R:\4416_rdy_pf127.dgn
USER: tacobuckner