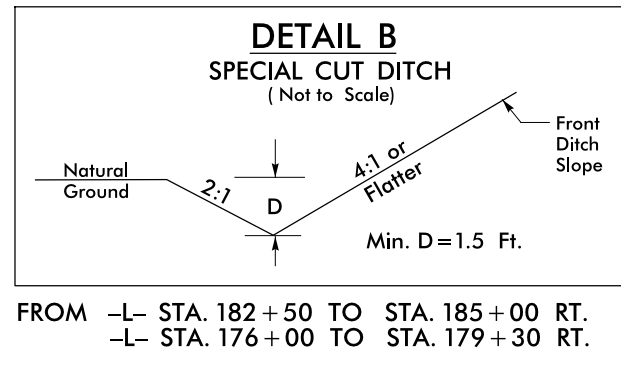
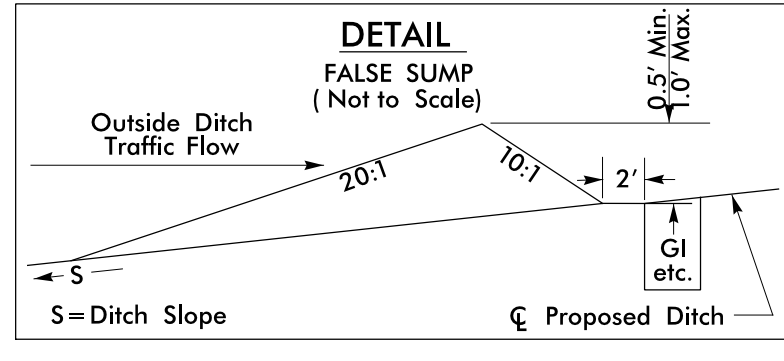
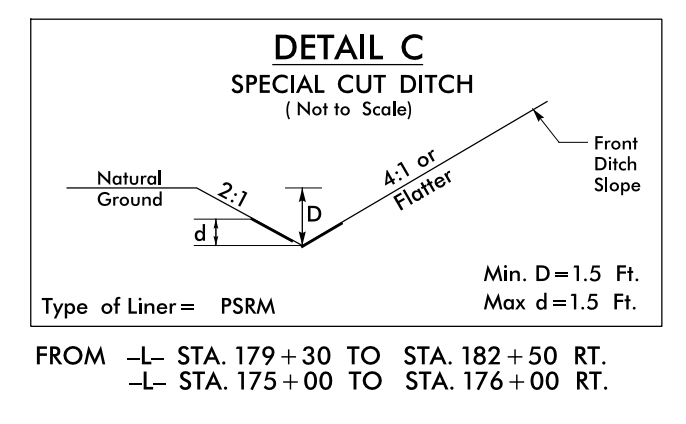


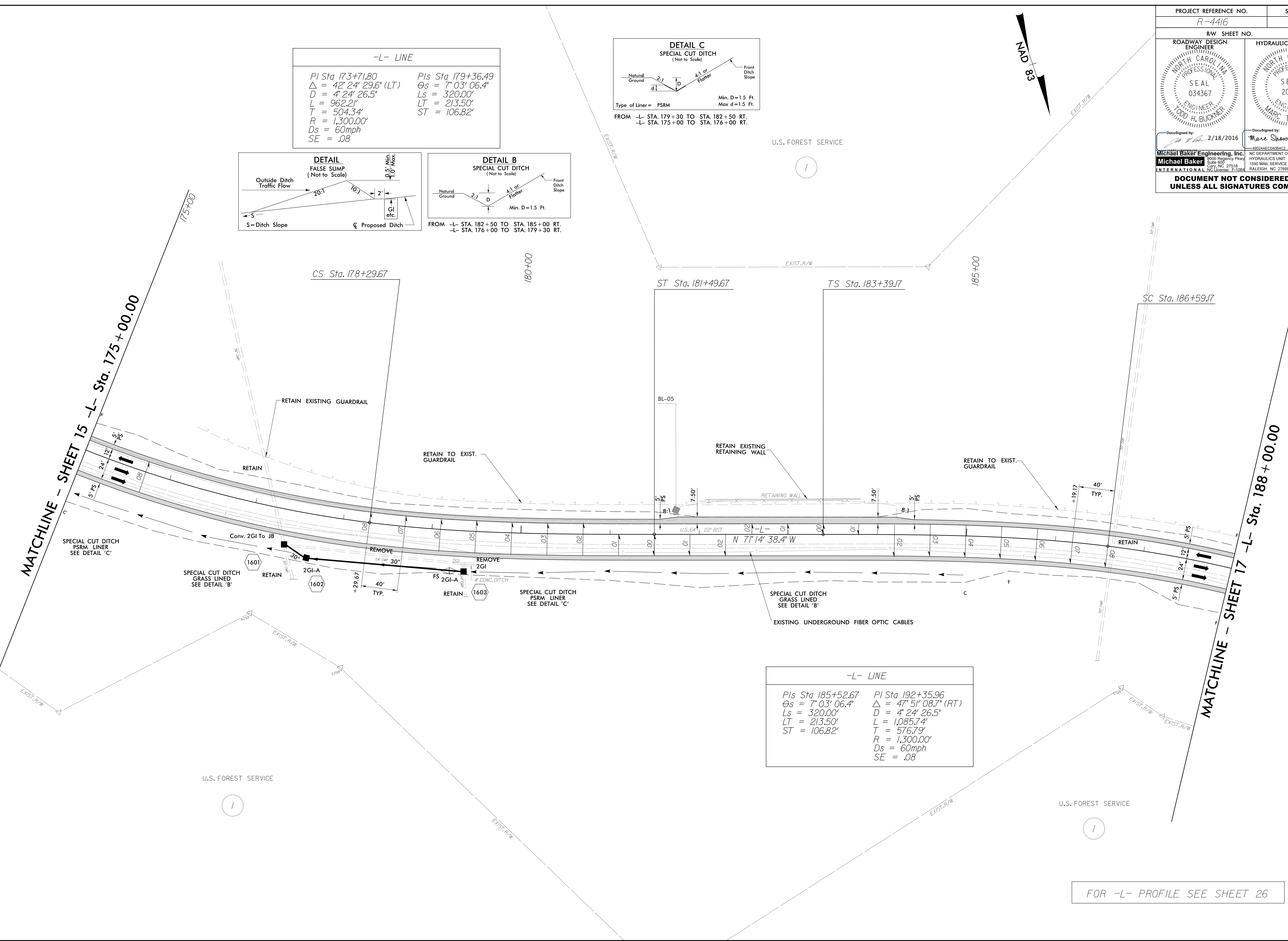
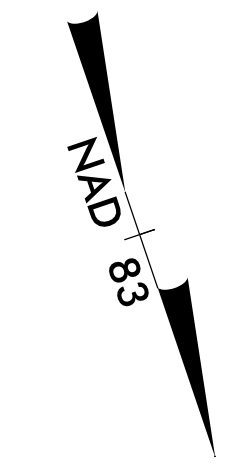
PROJECT REFERENCE NO. R-4416		SHEET NO. 16	
RW SHEET NO.			
ROADWAY DESIGN ENGINEER NORTH CAROLINA PROFESSIONAL ENGINEER SEAL 034367 LODD H. BUCKNER		HYDRAULICS ENGINEER NORTH CAROLINA PROFESSIONAL ENGINEER SEAL 20870 MARC T. SHOWN	
DocuSigned by: 2/18/2016		DocuSigned by: Marc Shown 2/18/2016	
Michael Baker Engineering, Inc. 1500 Regency Park Suite 600 Cary, NC 27518 INTERNATIONAL NC License: F-1084		NC DEPARTMENT OF TRANSPORTATION HYDRAULICS UNIT 1590 MAIL SERVICE CENTER RALEIGH, NC 27699-1590	
DOCUMENT NOT CONSIDERED FINAL UNLESS ALL SIGNATURES COMPLETED			

-L- LINE

PI Sta 173+71.80 $\Delta = 42^\circ 24' 29.6"$ (LT) D = 4' 24" 26.5" L = 962.21' T = 504.34' R = 1,300.00' Ds = 60mph SE = .08	PIs Sta 179+36.49 $\Theta_s = 7^\circ 03' 06.4"$ Ls = 320.00' LT = 213.50' ST = 106.82'
---	---



U.S. FOREST SERVICE



-L- LINE

PIs Sta 185+52.67 $\Theta_s = 7^\circ 03' 06.4"$ Ls = 320.00' LT = 213.50' ST = 106.82'	PI Sta 192+35.96 $\Delta = 47^\circ 51' 08.7"$ (RT) D = 4' 24" 26.5" L = 1,085.74' T = 576.79' R = 1,300.00' Ds = 60mph SE = .08
---	---

U.S. FOREST SERVICE

U.S. FOREST SERVICE

FOR -L- PROFILE SEE SHEET 26

REVISIONS

8/17/99

2/18/2016 2:28:20 PM R:\4416.rdy_psh16.dgn
USER: todd.buckner