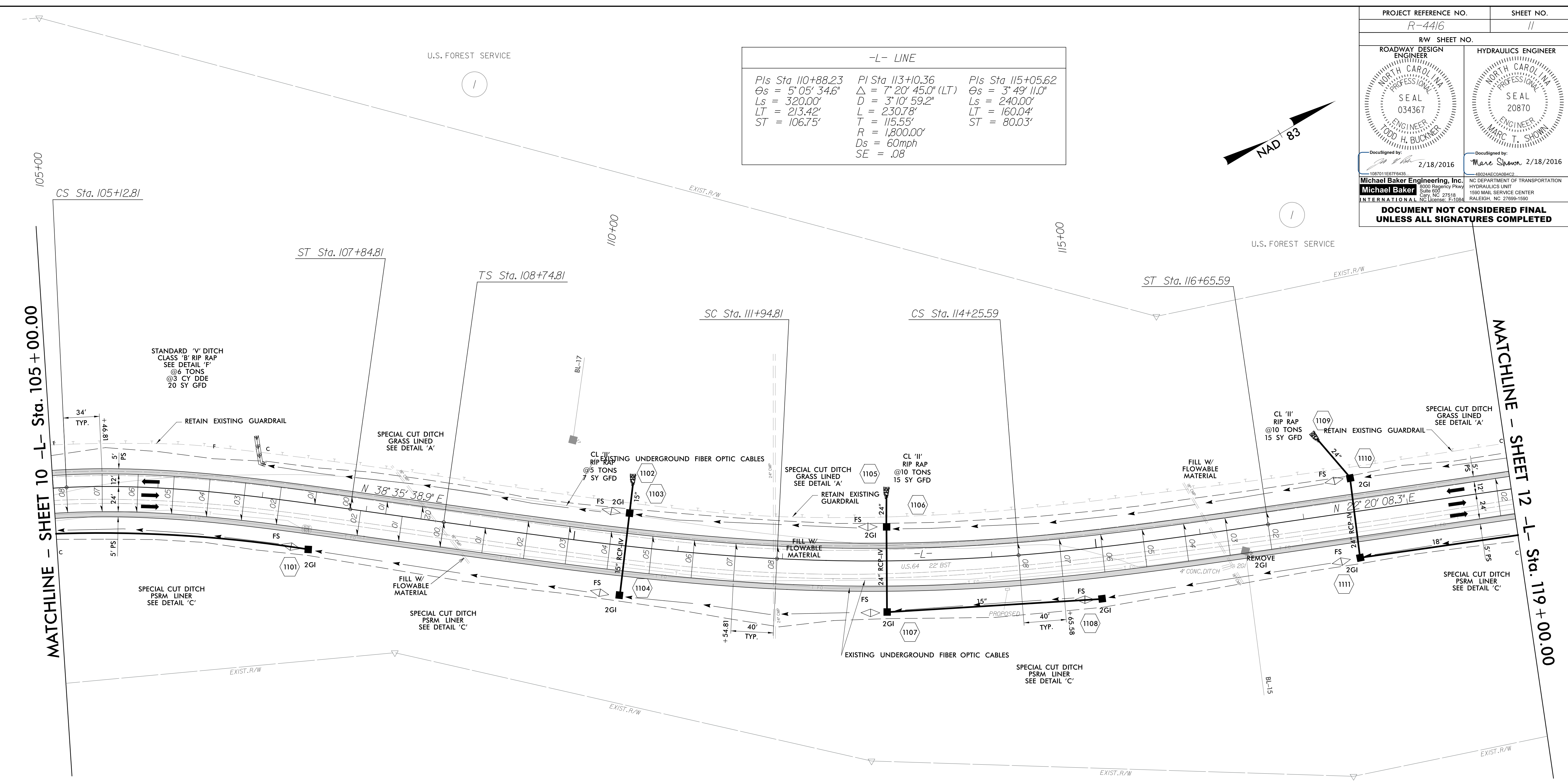
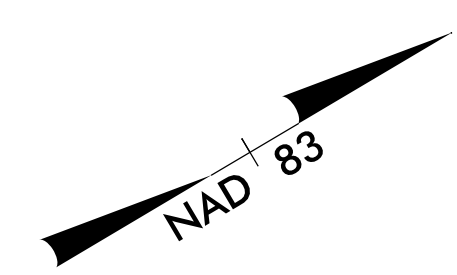
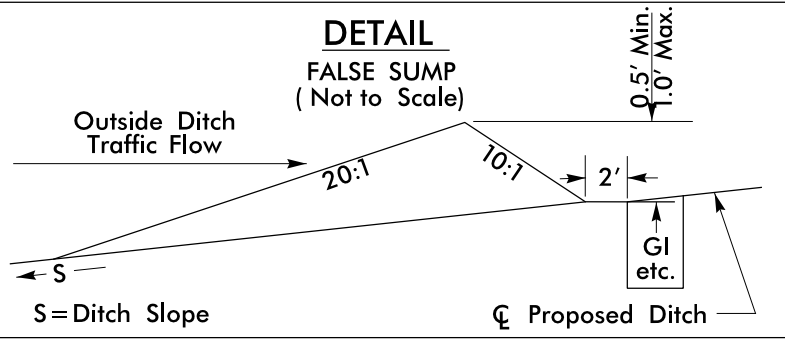
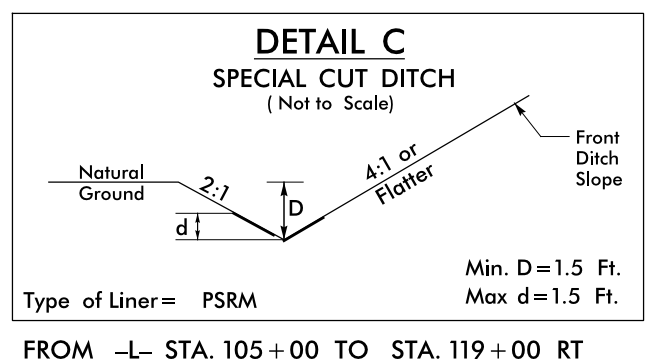
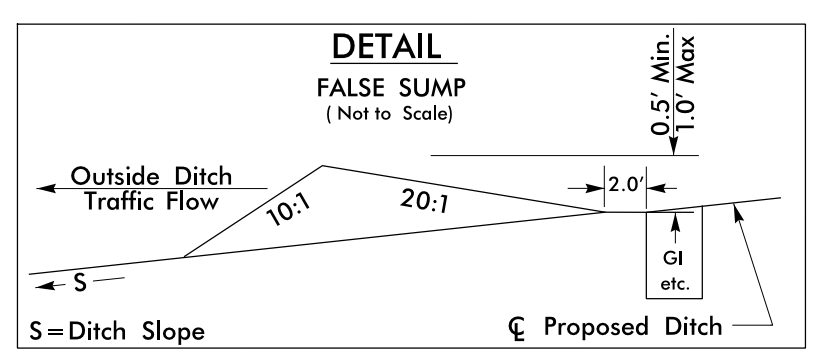
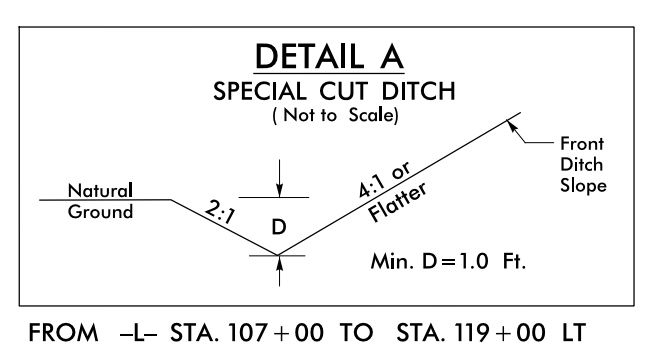
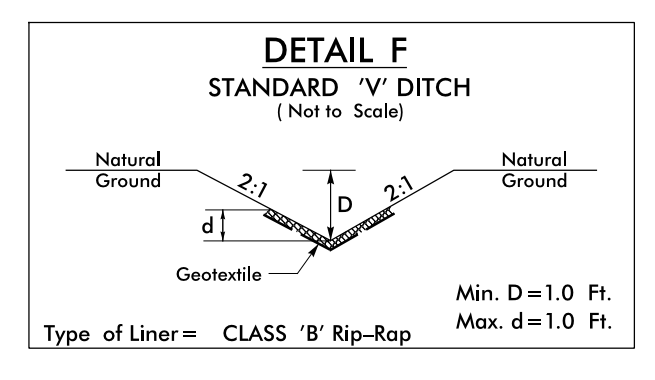


| | |
|---|--|
| PROJECT REFERENCE NO. R-4416 | SHEET NO. 11 |
| RW SHEET NO. | |
| ROADWAY DESIGN ENGINEER NORTH CAROLINA PROFESSIONAL ENGINEER SEAL 034367 LODD H. BUCKNER | HYDRAULICS ENGINEER NORTH CAROLINA PROFESSIONAL ENGINEER SEAL 20870 MARC T. SHOWN |
| DocuSigned by: 2/18/2016 | DocuSigned by: Mare Shown 2/18/2016 |
| Michael Baker Engineering, Inc. 1500 Regency Plaza Suite 600 27518 INTERNATIONAL NC License: F-1084 | NC DEPARTMENT OF TRANSPORTATION HYDRAULICS UNIT 1590 MAIL SERVICE CENTER RALEIGH, NC 27699-1590 |
| DOCUMENT NOT CONSIDERED FINAL UNLESS ALL SIGNATURES COMPLETED | |

| -L- LINE | | |
|-----------------------------------|--------------------------------------|-----------------------------------|
| PIs Sta 110+88.23 | PI Sta 113+10.36 | PIs Sta 115+05.62 |
| $\theta_s = 5^{\circ} 05' 34.6''$ | $\Delta = 7^{\circ} 20' 45.0''$ (LT) | $\theta_s = 3^{\circ} 49' 11.0''$ |
| $L_s = 320.00'$ | $D = 3^{\circ} 10' 59.2''$ | $L_s = 240.00'$ |
| $LT = 213.42'$ | $L = 230.78'$ | $LT = 160.04'$ |
| $ST = 106.75'$ | $T = 115.55'$ | $ST = 80.03'$ |
| | $R = 1,800.00'$ | |
| | $D_s = 60\text{mph}$ | |
| | $SE = .08$ | |



| -L- LINE | |
|--|------------------------------------|
| PI Sta 101+21.29 | PIs Sta 106+03.78 |
| $\Delta = 103^{\circ} 47' 40.9''$ (RT) | $\theta_s = 10^{\circ} 40' 27.4''$ |
| $D = 7^{\circ} 50' 55.5''$ | $L_s = 272.00'$ |
| $L = 1,322.44'$ | $LT = 181.66'$ |
| $T = 930.91'$ | $ST = 90.97'$ |
| $R = 730.00'$ | |
| $D_s = 45\text{mph}$ | |
| $SE = .08$ | |



FOR -L- PROFILE SEE SHEET 23 & 24

REVISIONS

8/17/99

2/18/2016 2:28:15 PM
R:\4416_rdy_psh11.dgn
USER: todd.buckner