

# SURVEY CONTROL SHEET R-4416

TYPE	STATION	NORTH	EAST	TYPE	STATION	NORTH	EAST
CPOT	10+00.00	500,780.78	616,938.40	SC	111+94.81	505,901.00	619,815.78
TS	14+05.00	500,931.99	617,314.12	CS	114+25.59	506,101.06	619,930.49
SC	16+85.00	501,031.22	617,575.89	ST	116+65.59	506,320.93	620,026.59
CS	22+85.21	501,144.99	618,163.49	TS	119+20.59	506,556.80	620,123.50
ST	25+65.21	501,150.65	618,443.39	SC	121+60.59	506,781.63	620,207.16
TS	27+25.21	501,150.63	618,603.39	PCC	139+23.71	508,226.68	619,505.88
SC	29+25.21	501,152.84	618,803.36	CS	142+77.53	508,277.27	619,158.93
CS	33+71.52	501,200.74	619,246.68	ST	145+65.53	508,215.84	618,878.03
ST	35+71.52	501,241.30	619,442.51	TS	146+61.53	508,189.44	618,785.73
TS	48+93.52	501,523.80	620,733.98	SC	149+49.53	508,128.02	618,504.83
SC	51+81.52	501,599.04	621,011.69	CS	158+68.46	508,555.32	617,754.26
CS	64+76.35	502,627.47	621,633.40	ST	161+56.46	508,828.23	617,663.69
SC	65+96.35	502,745.76	621,613.39	TS	165+47.46	509,206.37	617,564.26
CS	74+86.11	503,581.52	621,316.73	SC	168+67.46	509,512.05	617,470.32
SC	76+06.11	503,686.19	621,258.08	CS	178+29.67	510,199.94	616,829.12
CS	85+98.37	504,236.19	620,466.10	ST	181+49.67	510,315.10	616,530.79
SRS	89+18.37	504,269.60	620,148.11	TS	183+39.17	510,376.03	616,351.35
SC	91+90.37	504,302.73	619,878.55	SC	186+59.17	510,491.18	616,053.02
CS	105+12.81	505,352.47	619,411.67	PCC	197+44.91	511,295.79	615,371.48
ST	107+84.81	505,574.84	619,567.59	CS	213+04.72	512,734.30	615,742.91
TS	108+74.81	505,645.18	619,623.73	ST	216+24.72	512,941.97	615,986.15
				POT	223+20.52	513,373.99	616,531.57

**DATUM DESCRIPTION**

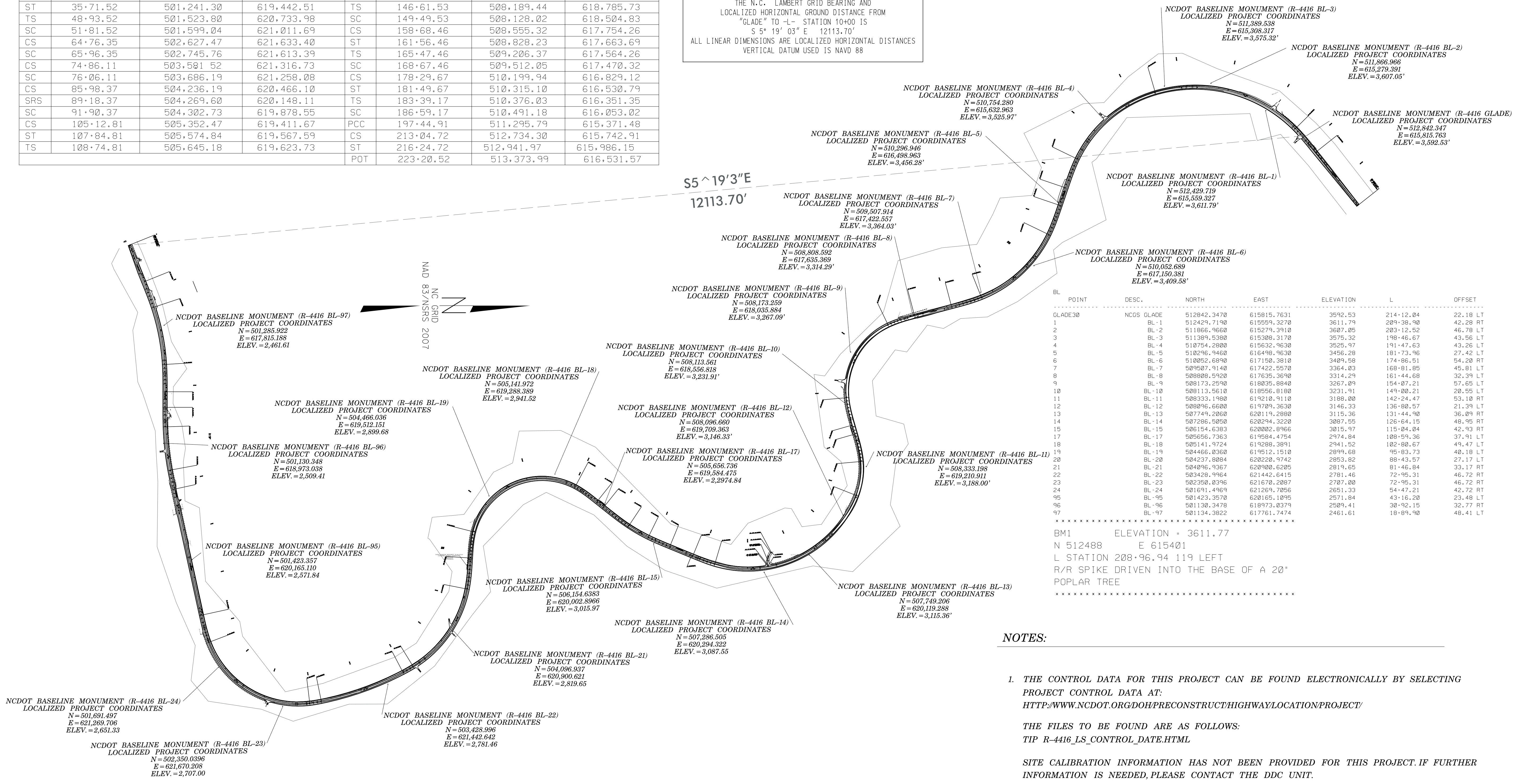
THE LOCALIZED COORDINATE SYSTEM DEVELOPED FOR THIS PROJECT IS BASED ON THE STATE PLANE COORDINATES ESTABLISHED BY NCOS FOR MONUMENT "GLADE"

WITH NAD 83/NSRS 2007 STATE PLANE GRID COORDINATES OF NORTHING: 512841.26(±) EASTING: 615815.89(±) ELEVATION: 3592.53(±)

THE AVERAGE COMBINED GRID FACTOR USED ON THIS PROJECT (GROUND TO GRID) IS: 0.99971014

THE N.C. LAMBERT GRID BEARING AND LOCALIZED HORIZONTAL GROUND DISTANCE FROM "GLADE" TO L- STATION 10+00 IS S 5° 19' 03" E 12113.70'

ALL LINEAR DIMENSIONS ARE LOCALIZED HORIZONTAL DISTANCES VERTICAL DATUM USED IS NAVD 88



BL POINT	DESC.	NORTH	EAST	ELEVATION	L	OFFSET
GLADE30	NCOS GLADE	512842.3470	615815.7631	3592.53	214+12.04	22.18 LT
1	BL-1	512429.7190	615559.3270	3611.79	209+38.90	42.28 RT
2	BL-2	511866.9660	615279.3910	3607.05	203+12.52	46.78 LT
3	BL-3	511389.5380	615308.3170	3575.32	198+46.67	43.56 LT
4	BL-4	510754.2800	615632.9630	3525.97	191+47.63	43.26 LT
5	BL-5	510296.9460	616498.9630	3456.28	181+73.96	27.42 LT
6	BL-6	510052.6890	617150.3810	3409.58	174+06.51	54.20 RT
7	BL-7	509507.9140	617422.5570	3364.03	168+01.85	45.81 LT
8	BL-8	508808.5920	617635.3690	3314.29	161+44.68	32.39 LT
9	BL-9	508173.2590	618035.8940	3267.09	154+07.21	57.65 LT
10	BL-10	508113.5610	618956.8180	3231.91	149+00.21	20.55 LT
11	BL-11	508333.1980	619210.9110	3188.00	142+24.47	53.10 RT
12	BL-12	508096.6600	619709.3630	3146.33	136+00.57	21.39 LT
13	BL-13	507749.2060	620119.2880	3115.36	131+44.90	36.09 RT
14	BL-14	507286.5850	620294.3220	3087.55	126+64.15	48.95 RT
15	BL-15	506154.6383	620002.8966	3015.97	115+04.04	42.93 RT
17	BL-17	505656.7363	619584.4754	2974.84	108+59.36	37.91 LT
18	BL-18	505141.9724	619288.3891	2941.52	102+00.67	49.47 LT
19	BL-19	504466.0360	619512.1510	2899.68	95+83.73	40.18 LT
20	BL-20	504237.8084	620220.9742	2853.82	88+43.57	27.17 LT
21	BL-21	504096.9367	620900.6205	2819.65	81+46.84	33.17 RT
22	BL-22	503428.9964	621442.6415	2781.46	72+95.31	46.72 RT
23	BL-23	502350.0396	621670.2087	2707.00	72+95.31	46.72 RT
24	BL-24	501691.4969	621269.7056	2651.33	54+47.21	42.72 RT
95	BL-95	501423.3570	620265.1898	2571.84	43+15.20	23.48 LT
96	BL-96	501130.3478	618973.0379	2509.41	30+92.15	32.77 RT
97	BL-97	501134.3822	617761.7474	2461.61	18+89.90	48.41 LT

\*\*\*\*\*

BM1 ELEVATION = 3611.77  
 N 512488 E 615401  
 L STATION 208+96.94 119 LEFT  
 R/R SPIKE DRIVEN INTO THE BASE OF A 20" POPLAR TREE  
 \*\*\*\*\*

**NOTES:**

- THE CONTROL DATA FOR THIS PROJECT CAN BE FOUND ELECTRONICALLY BY SELECTING PROJECT CONTROL DATA AT:  
[HTTP://WWW.NCDOT.ORG/DOH/PRECONSTRUCTHIGHWAYLOCATION/PROJECT/](http://www.ncdot.org/doh/preconstructhighwaylocation/project/)  
 THE FILES TO BE FOUND ARE AS FOLLOWS:  
 TIP R-4416\_LS\_CONTROL\_DATA.HTML

SITE CALIBRATION INFORMATION HAS NOT BEEN PROVIDED FOR THIS PROJECT. IF FURTHER INFORMATION IS NEEDED, PLEASE CONTACT THE DDC UNIT.

NETWORK ESTABLISHED FROM EXISTING HARN MONUMENTATION

NOTE: DRAWING NOT TO SCALE

6/2/99  
 6/17/2016 2:47:36 PM R:\R-4416.LS.Lc.dgn  
 User: tccdd\backnef