

NOTES

APPROACH SLAB SHALL NOT BE CONSTRUCTED PRIOR TO COMPLETION OF THE BRIDGE DECK.

FOR REINFORCED BRIDGE APPROACH FILL INCLUDING GEOTEXTILE, IMPERMEABLE GEOMEMBRANE, 4" Ø DRAINAGE PIPE, #78M STONE, AND SELECT MATERIAL, SEE ROADWAY PLANS.

AREA BETWEEN THE WINGWALL AND APPROACH SLAB SHALL BE GRADED TO DRAIN THE WATER AWAY FROM THE FILL FACE OF THE BRIDGE AND SHALL BE PAVED. SEE ROADWAY PLANS.

THE COST OF THE PARAPET END POST ON THE APPROACH SLAB SHALL BE INCLUDED IN THE LINEAR FOOT CONTRACT PRICE BID FOR "CONCRETE PARAPET".

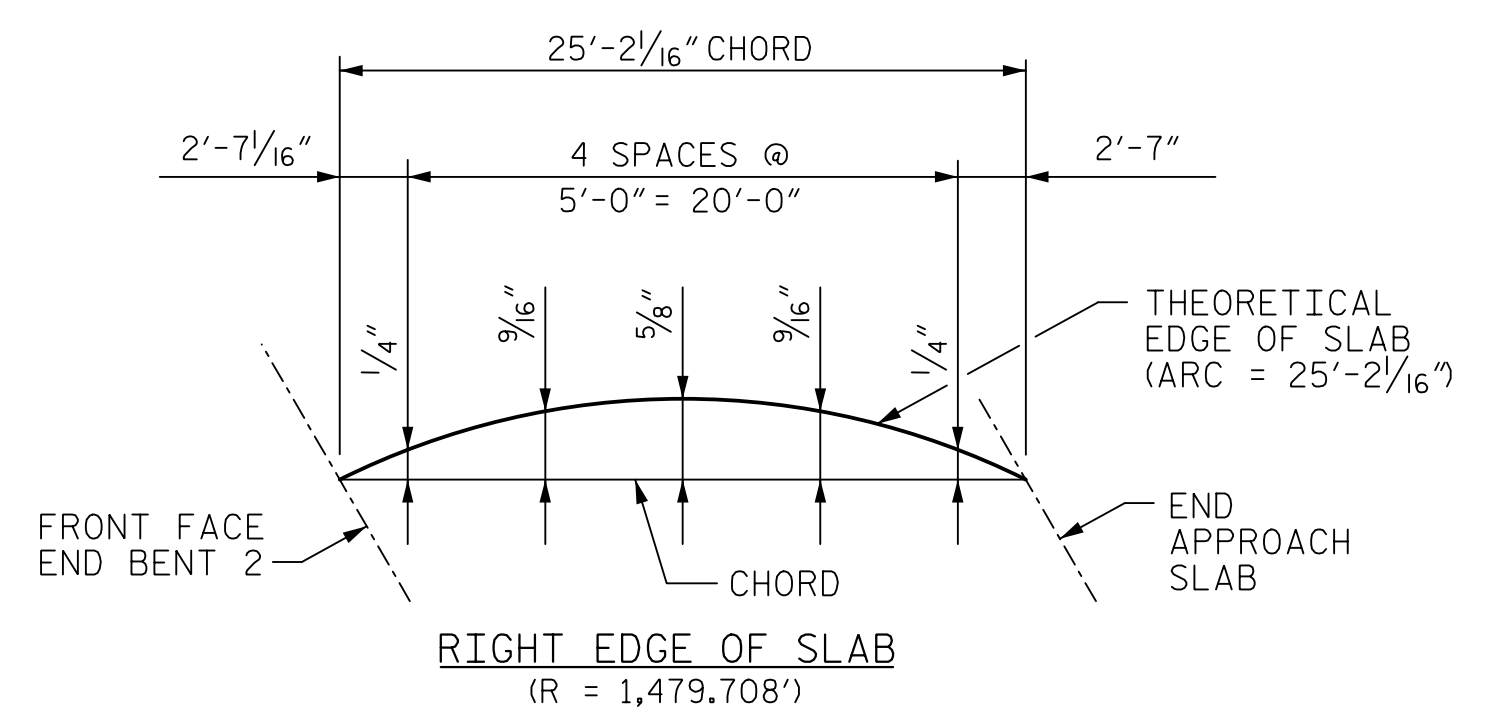
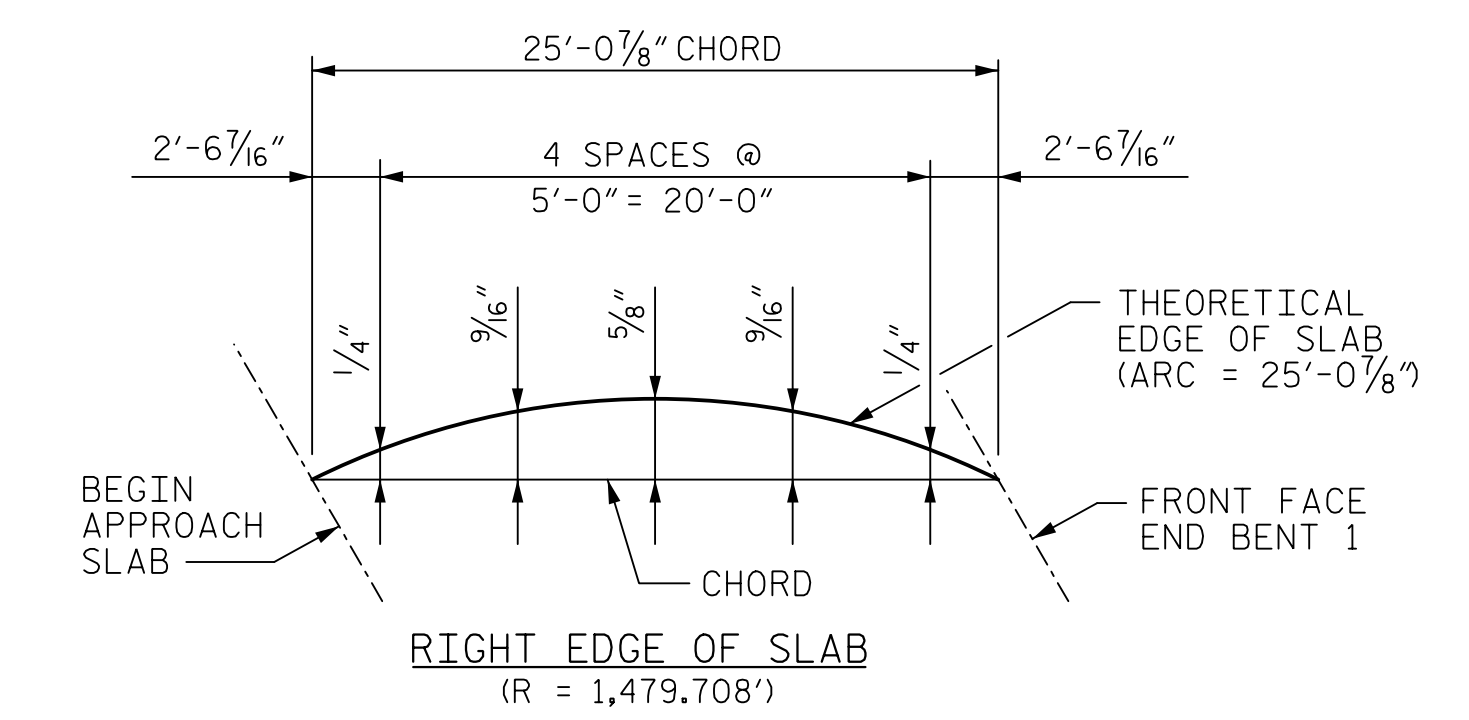
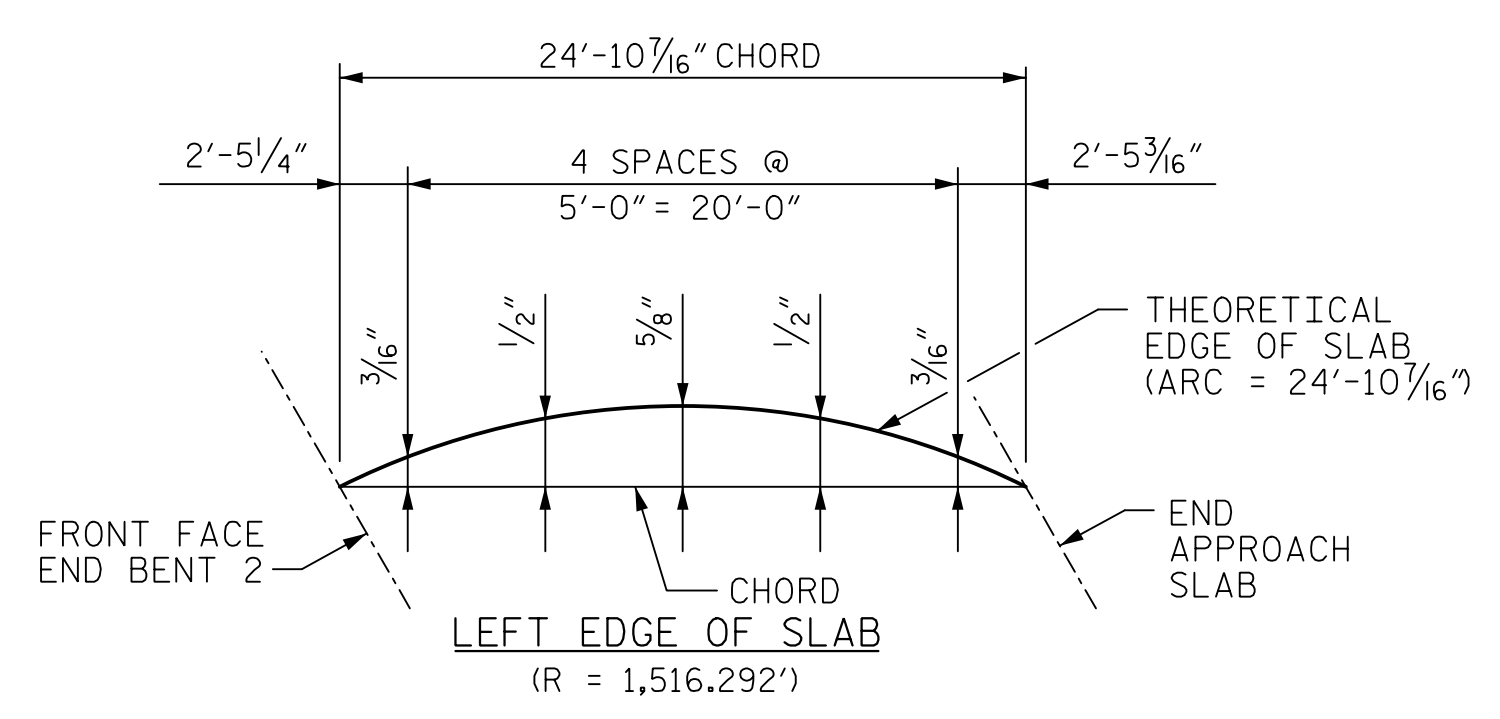
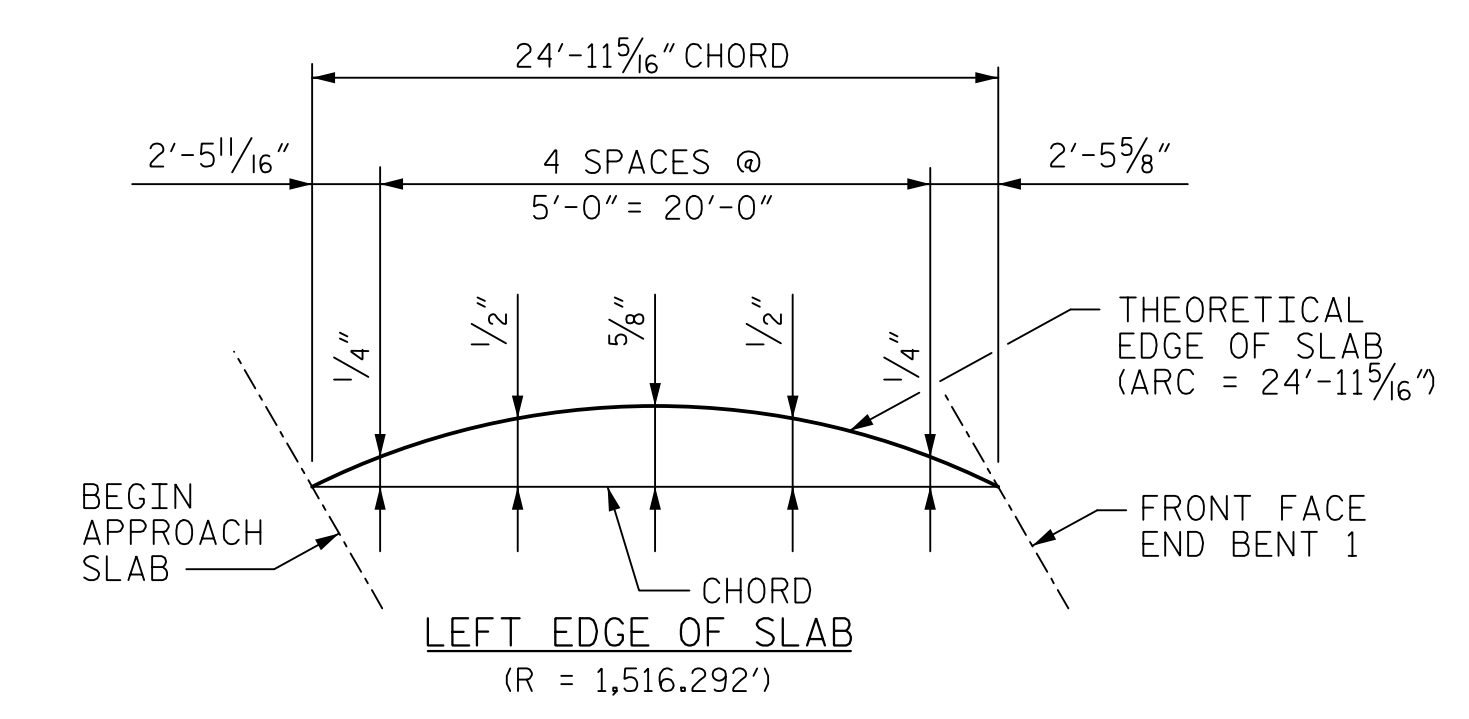
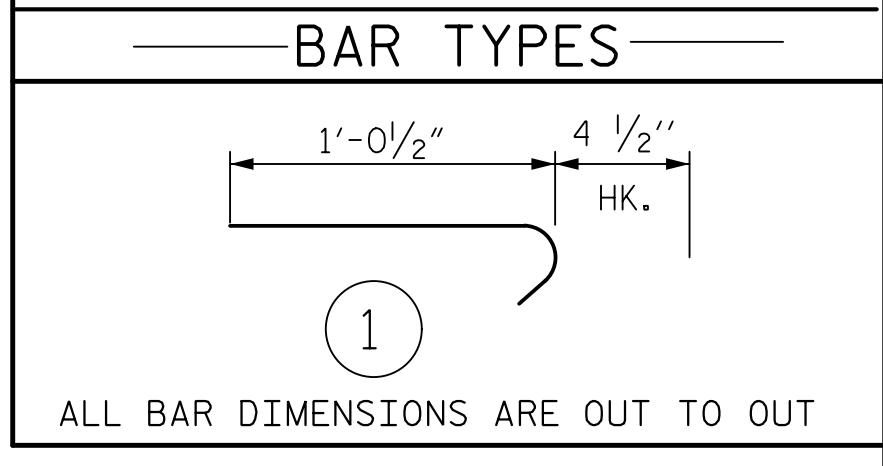
THE PARAPET END POST ON EACH APPROACH SLAB SHALL NOT BE CAST UNTIL ALL APPROACH SLAB CONCRETE HAS BEEN CAST AND HAS REACHED A MINIMUM COMPRESSIVE STRENGTH OF 3,000 PSI.

CONCRETE AND REINFORCING STEEL QUANTITY FOR PARAPET END POSTS ON APPROACH SLAB IS INCLUDED IN THE BILL OF MATERIAL FOR PARAPET AND END POSTS. SEE "CONCRETE PARAPET AND END POST DETAILS" SHEET.

BILL OF MATERIAL					
APPROACH SLAB AT EB #1					
BAR	NO.	SIZE	TYPE	LENGTH	WEIGHT
*A1	50	#4	STR	20'-5"	682
A2	52	#4	STR	20'-3"	703
*A3	7	#4	STR	2'-8"	12
A4	9	#4	STR	2'-6"	15
*B1	70	#5	STR	23'-6"	1,716
B2	70	#6	STR	24'-6"	2,576
*B3	1	#5	STR	3'-5"	4
B4	1	#6	STR	3'-5"	5
*B5	1	#5	STR	3'-2"	3
B6	1	#6	STR	3'-2"	5
*B7	1	#5	STR	4'-1"	4
B8	1	#6	STR	4'-1"	6
*B9	1	#5	STR	3'-11"	4
B10	1	#6	STR	3'-11"	6
*J1	38	#4	1	1'-5"	36
REINFORCING STEEL				LBS.	3,316
*EPOXY COATED REINFORCING STEEL				LBS.	2,461
CLASS AA CONCRETE				C. Y.	38.6

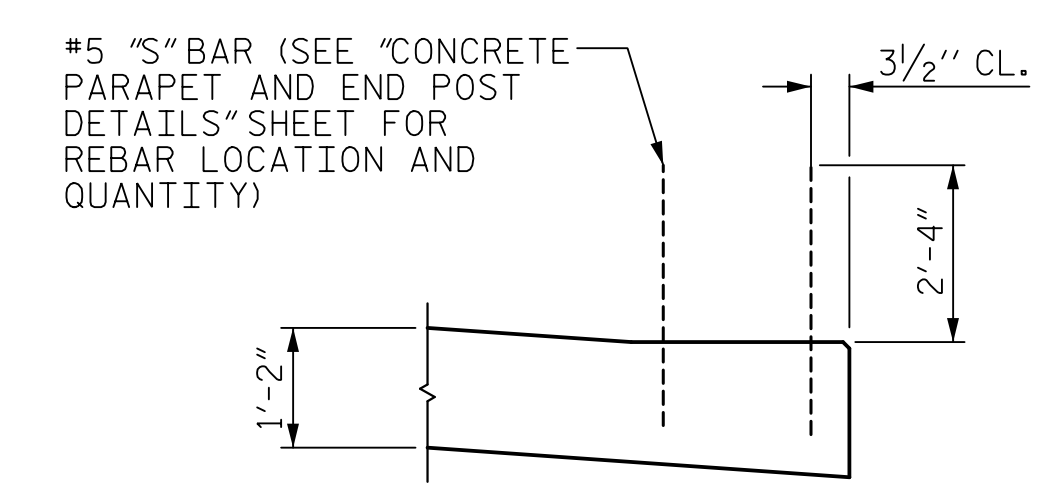
APPROACH SLAB AT EB #2					
BAR	NO.	SIZE	TYPE	LENGTH	WEIGHT
*A5	50	#4	STR	22'-6"	757
A6	52	#4	STR	22'-6"	782
*A7	7	#4	STR	2'-10"	13
A8	9	#4	STR	2'-7"	16
*B11	70	#5	STR	23'-9"	1,734
B12	70	#6	STR	24'-7"	2,585
*B13	1	#5	STR	4'-5"	5
B14	1	#6	STR	4'-5"	7
*B15	1	#5	STR	2'-10"	3
B16	1	#6	STR	2'-10"	4
*B17	1	#5	STR	4'-1"	4
B18	1	#6	STR	4'-1"	6
*B19	1	#5	STR	3'-3"	3
B20	1	#6	STR	3'-3"	5
*J1	42	#4	1	1'-5"	40
REINFORCING STEEL				LBS.	3,405
*EPOXY COATED REINFORCING STEEL				LBS.	2,559
CLASS AA CONCRETE				C. Y.	38.7

BAR TYPES					
BAR SIZE	EPOXY COATED	UNCOATED			
#4	2'-0"	1'-9"			
#5	2'-6"	2'-2"			
#6	3'-10"	2'-7"			

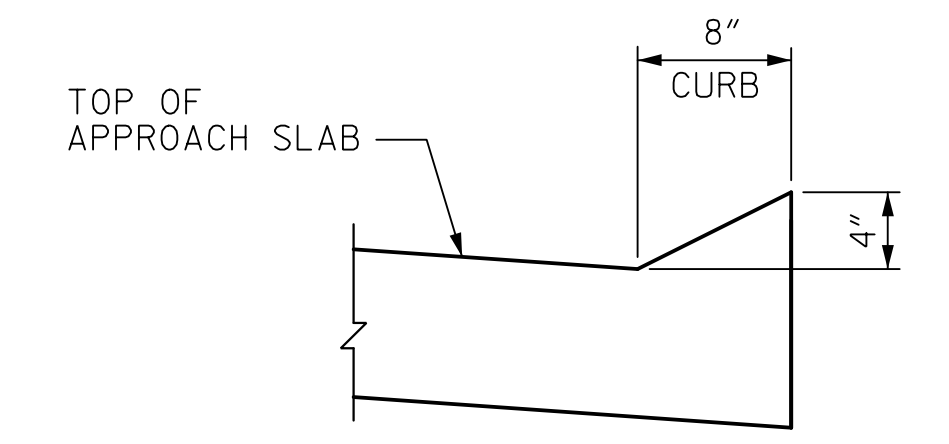


CURVE OFFSETS - APPROACH SLAB AT END BENT 1

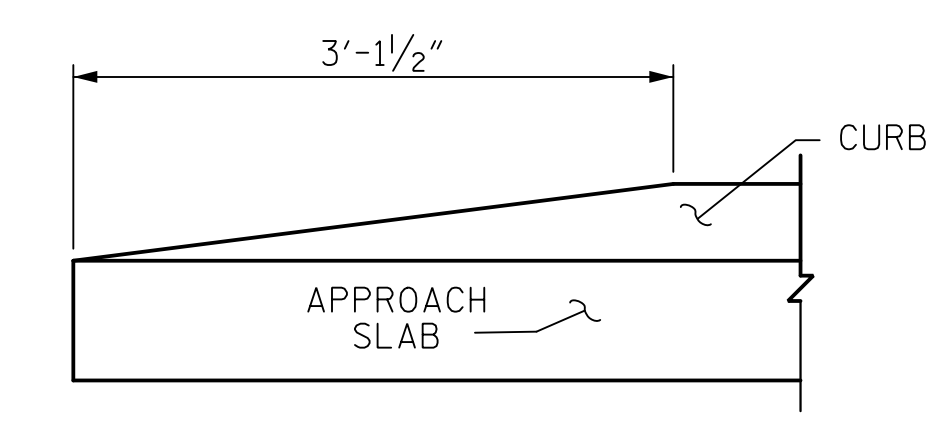
CURVE OFFSETS - APPROACH SLAB AT END BENT 2



SECTION K-K

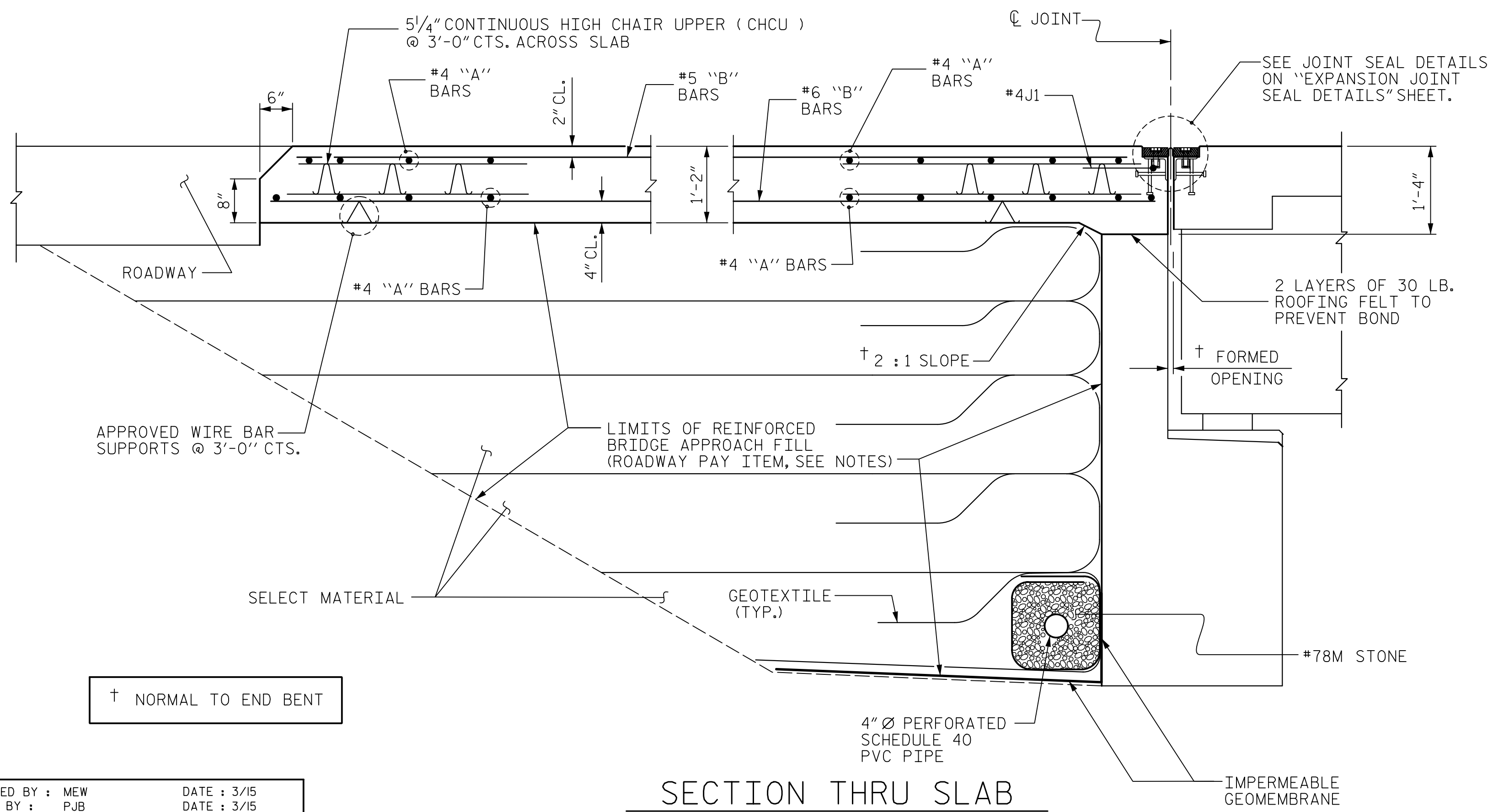


SECTION N-N



END OF CURB WITHOUT SHOULDER BERM GUTTER

CURB DETAILS



SECTION THRU SLAB

ASSEMBLED BY : MEW	DATE : 3/15
CHECKED BY : PJB	DATE : 3/15
DRAWN BY : EEM 3/95	REV. 10/1/11 MAA/GM
CHECKED BY : VAP 3/95	REV. 12/21/11 MAA/GM
	REV. 6/13 MAA/GM

DOCUMENT NOT CONSIDERED FINAL UNLESS ALL SIGNATURES COMPLETED

HNTB HNTB NORTH CAROLINA, P.C.			
NC License No. C-1554			
343 E. Six Forks Rd., Suite 200, Raleigh, N.C. 27609			
DRAWN BY : M. WRIGHT	DATE : 10/14	DWG. NO. 40	
CHECKED BY : P. BARBER	DATE : 3/15		

PROJECT NO. B-4811
 RUTHERFORD COUNTY
 STATION: POC 15+25.00 -L-

SHEET 2 OF 3

STATE OF NORTH CAROLINA
 DEPARTMENT OF TRANSPORTATION
 RALEIGH

STANDARD
 BRIDGE APPROACH SLAB
 FOR FLEXIBLE PAVEMENT

REVISIONS				SHEET NO.
NO.	BY:	DATE:	NO.	DATE:
1			3	
2			4	

TOTAL SHEETS: 42