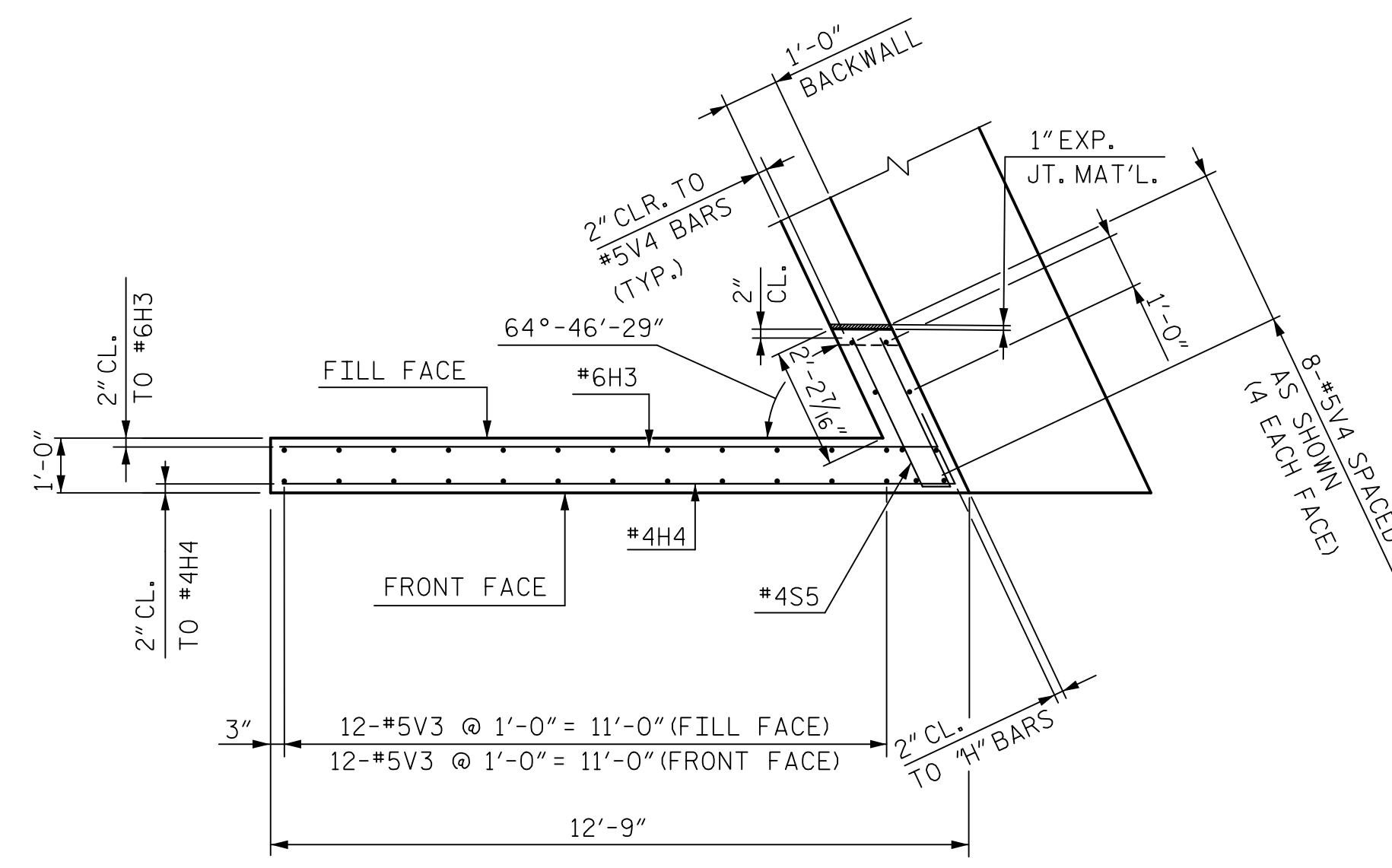
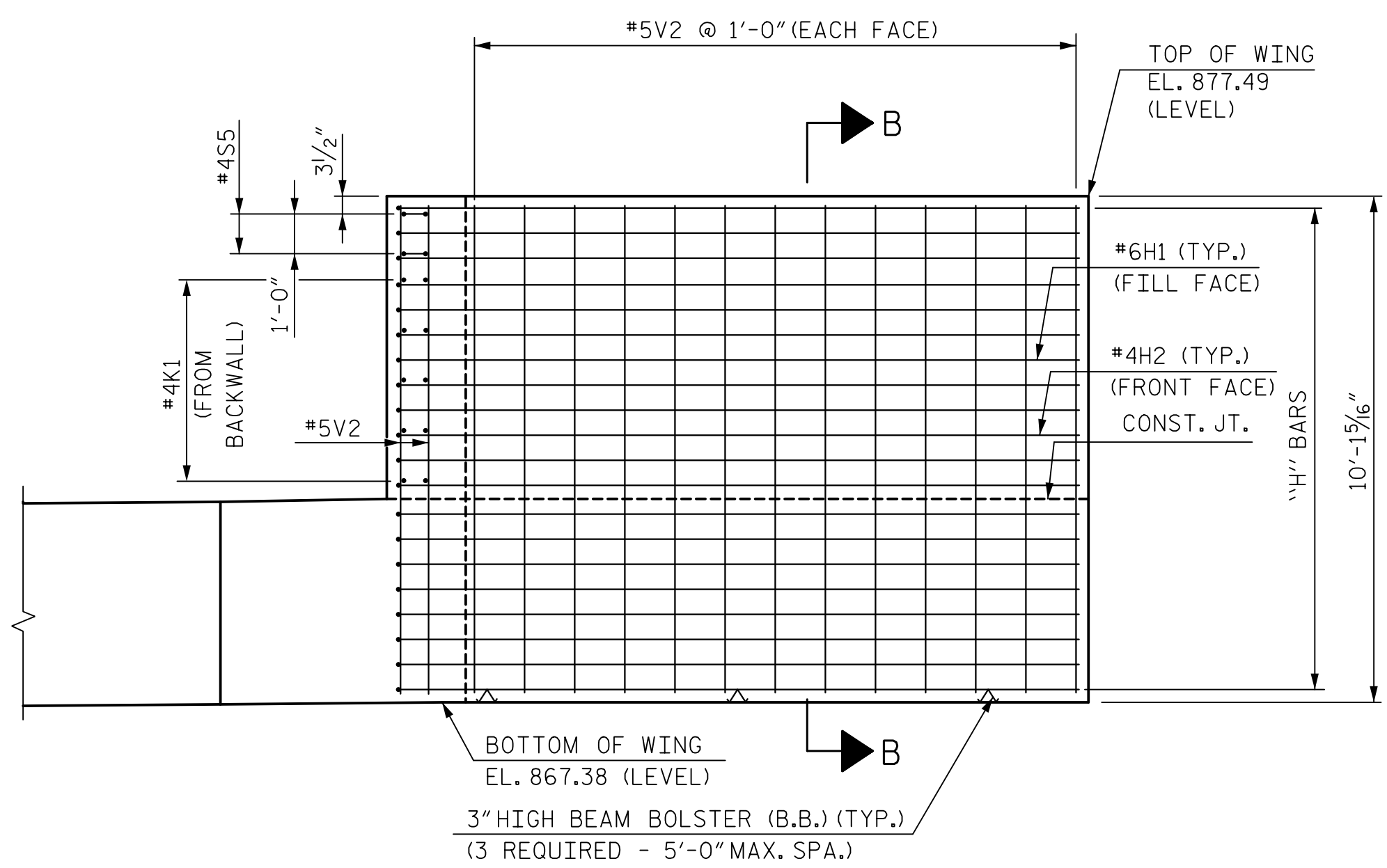


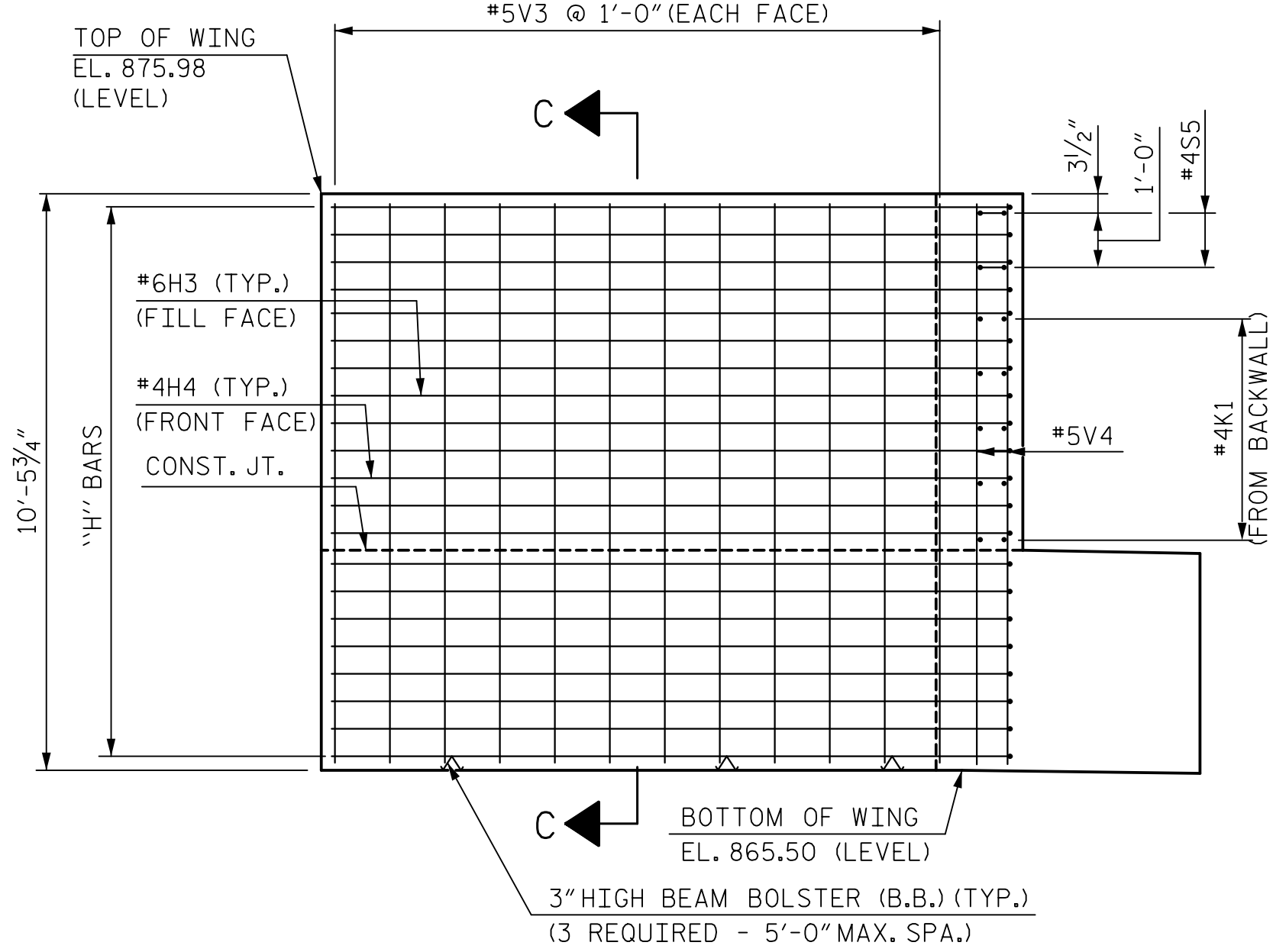
PLAN OF WING (W1)



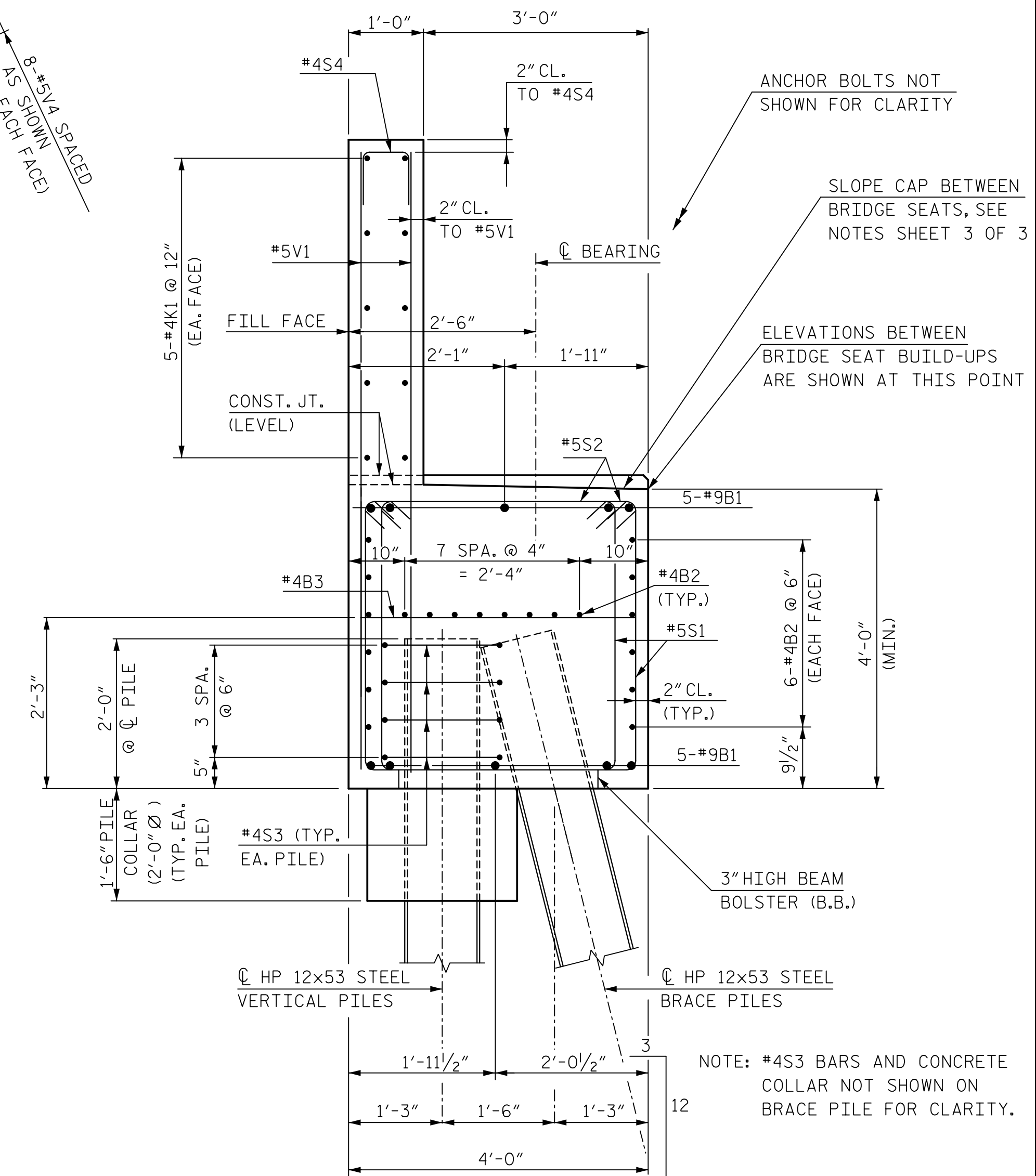
PLAN OF WING (W2)



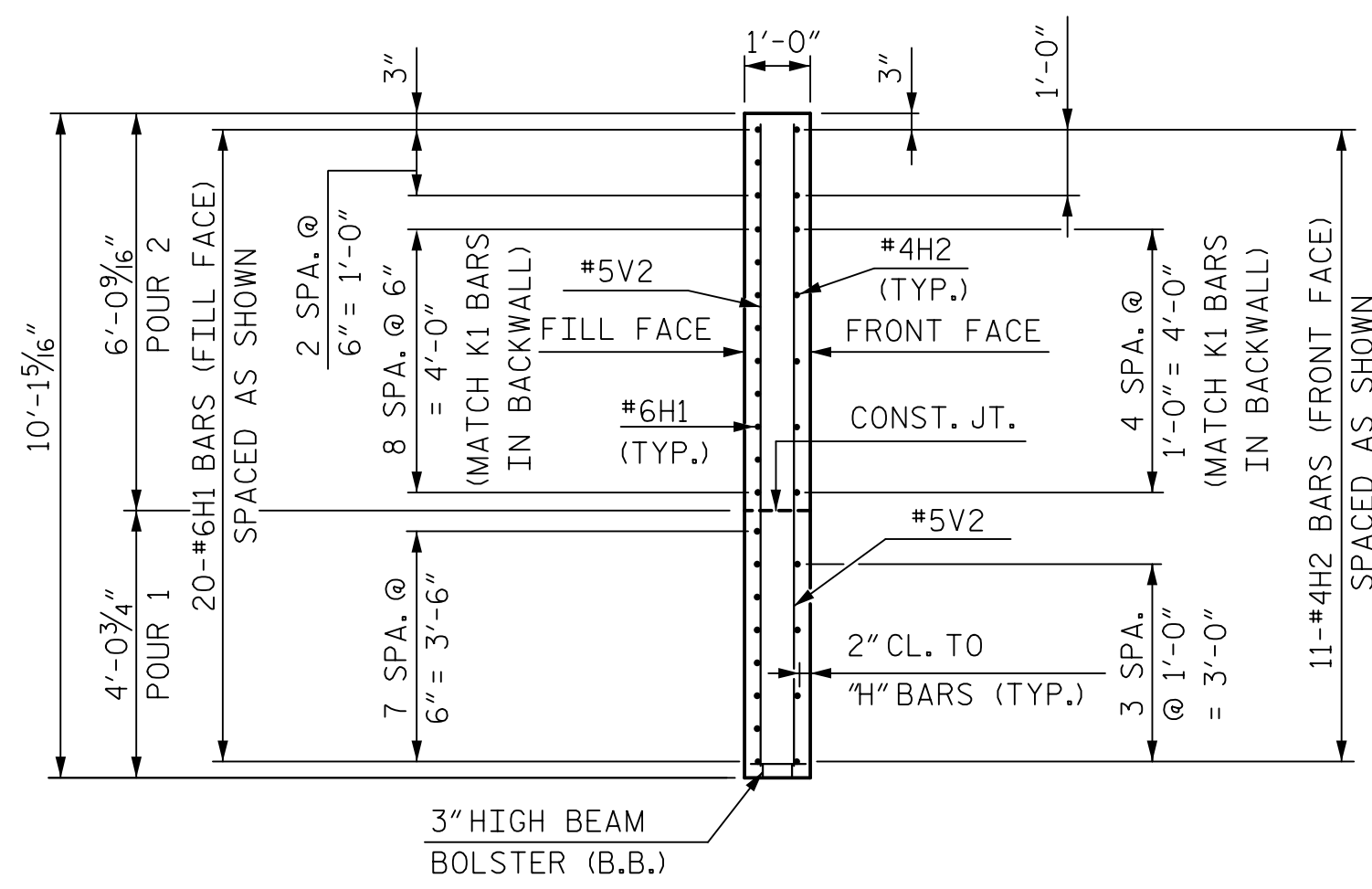
ELEVATION OF WING (W1)



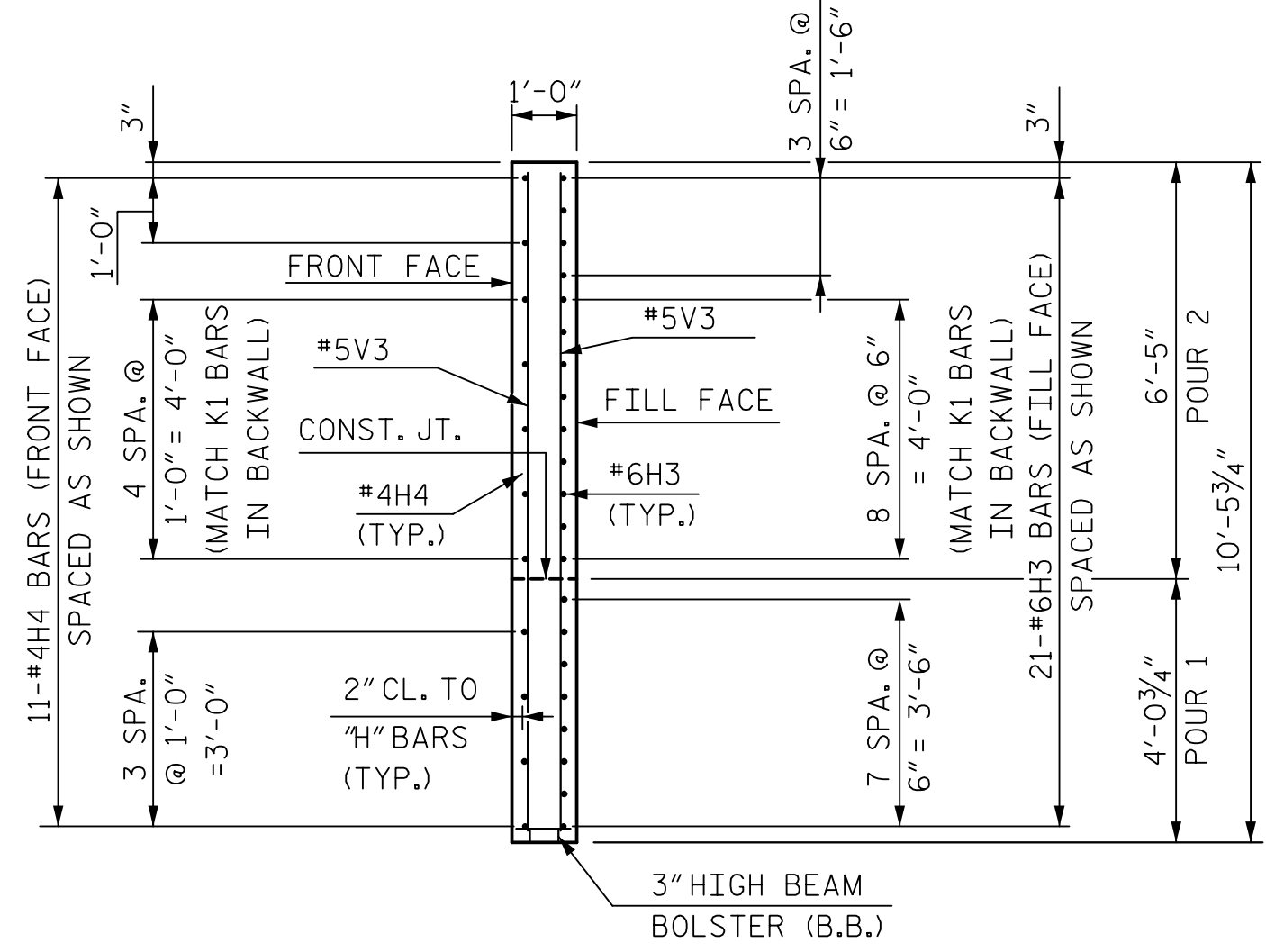
ELEVATION OF WING (W2)



SECTION A-A



SECTION B-B



SECTION C-C

NOTES:
FOR NOTES, SEE SHEET 3 OF 3.
FOR BLOCKOUT IN WINGWALL, SEE SHEET 3 OF 3.

PROJECT NO. B-4811
RUTHERFORD COUNTY
STATION: POC 15+25.00 -L-

SHEET 2 OF 3

STATE OF NORTH CAROLINA
DEPARTMENT OF TRANSPORTATION
RALEIGH

SUBSTRUCTURE

END BENT 1

DocuSigned by:
David W. Hawkins
NORTH CAROLINA PROFESSIONAL ENGINEER
SEAL 27812
1/29/2016

DocuSigned by:
Paul J. Barber
NORTH CAROLINA PROFESSIONAL ENGINEER
SEAL 12916
1/29/2016

HNTB HNTB NORTH CAROLINA, P.C.
NC License No. C-1554
343 E. Six Forks Rd., Suite 200, Raleigh, N.C. 27609

DRAWN BY: M. WRIGHT DATE: 11/14
CHECKED BY: D. HAWKINS DATE: 3/15 DWG. NO. 29

REVISIONS						SHEET NO. S01-29
NO.	BY	DATE	NO.	BY	DATE	
1			3			TOTAL SHEETS 42
2			4			

DOCUMENT NOT CONSIDERED FINAL
UNLESS ALL SIGNATURES COMPLETED