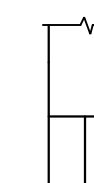


NOTES:

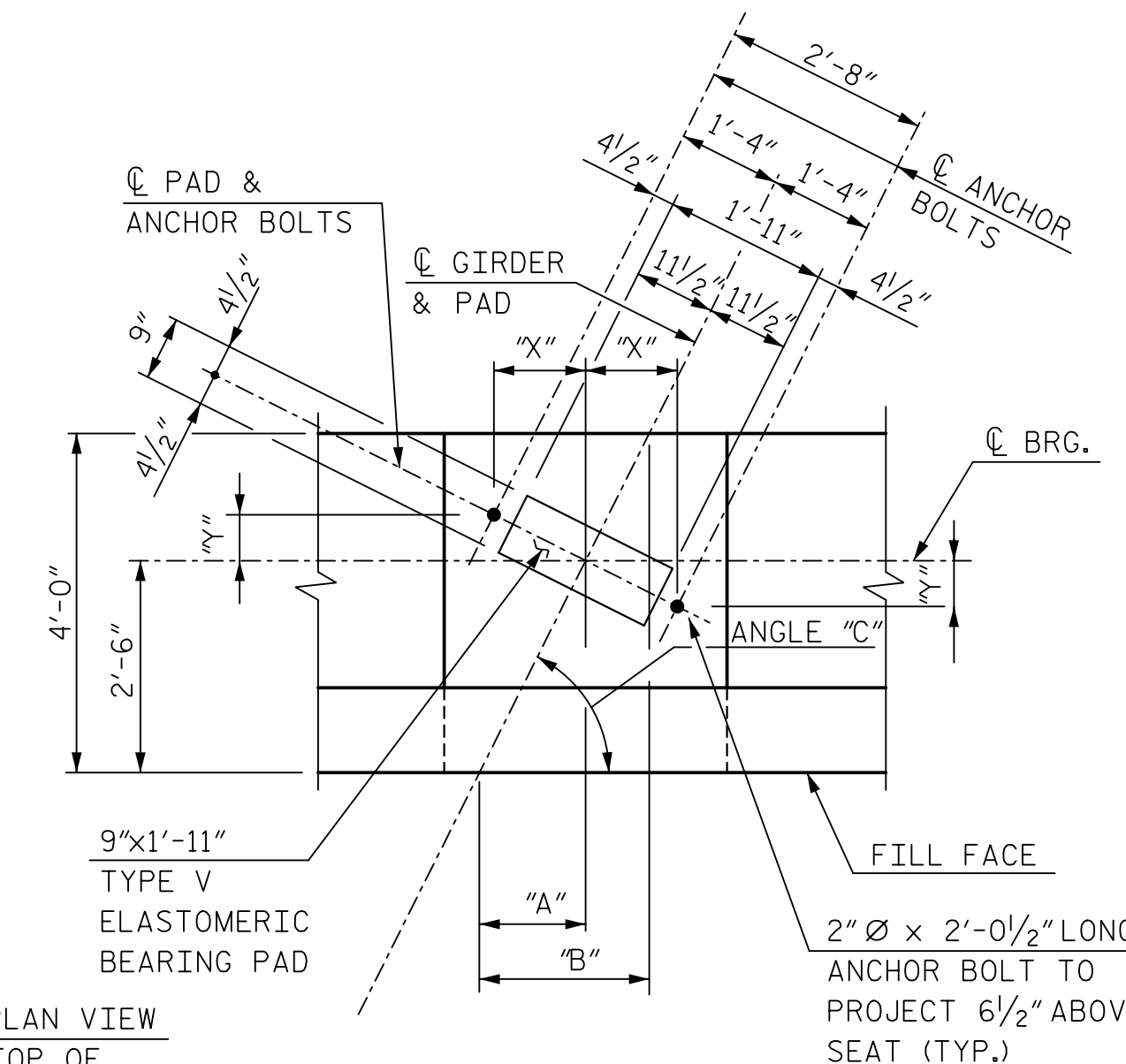
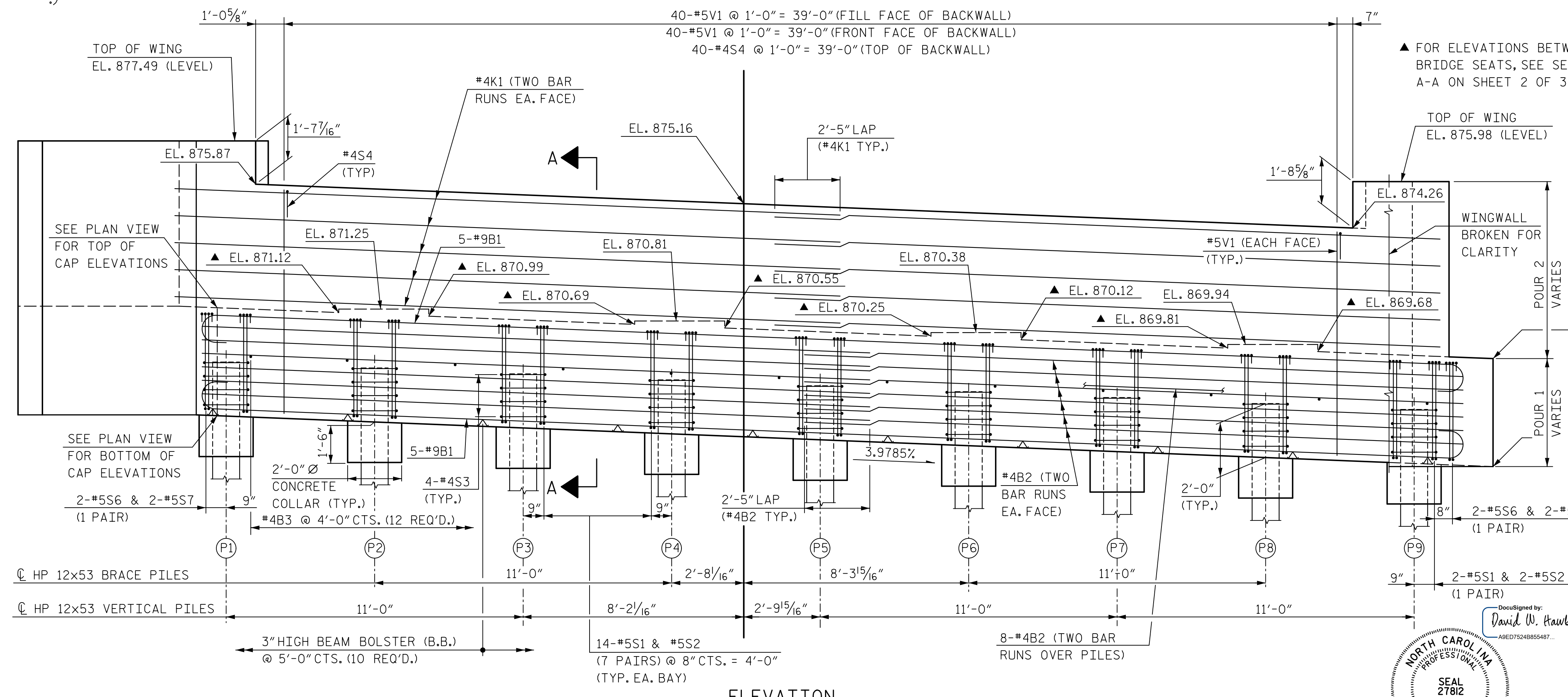
FOR NOTES AND PILE SPLICE DETAILS, SEE SHEET 3 OF 3.

FOR WINGWALL DETAILS AND SECTION A-A, SEE SHEET 2 OF 3.



INDICATES 3:12 PILE BATTER IN DIRECTION SHOWN.

GIRDER	"A"	"B"	ANGLE "C"	"X"	"Y"
GA1	1'-3"	2'-0 <sup>1</sup> / <sub>16</sub> "	63°-24'-16"	1'-2 <sup>5</sup> / <sub>16</sub> "	7 <sup>3</sup> / <sub>16</sub> "
GA2	1'-3 <sup>1</sup> / <sub>8</sub> "	2'-0 <sup>1</sup> / <sub>4</sub> "	63°-12'-53"	1'-2 <sup>5</sup> / <sub>16</sub> "	7 <sup>3</sup> / <sub>16</sub> "
GA3	1'-3 <sup>1</sup> / <sub>4</sub> "	2'-0 <sup>1</sup> / <sub>16</sub> "	63°-01'-21"	1'-2 <sup>1</sup> / <sub>4</sub> "	7 <sup>1</sup> / <sub>4</sub> "
GA4	1'-3 <sup>3</sup> / <sub>8</sub> "	2'-0 <sup>5</sup> / <sub>16</sub> "	62°-49'-37"	1'-2 <sup>1</sup> / <sub>4</sub> "	7 <sup>5</sup> / <sub>16</sub> "



TOP OF PILE ELEVATIONS	
(P1)	869.29
(P2)	869.07
(P3)	868.85
(P4)	868.63
(P5)	868.41
(P6)	868.19
(P7)	867.97
(P8)	867.76
(P9)	867.54

PROJECT NO. B-4811  
 RUTHERFORD COUNTY  
 STATION: POC 15+25.00 -L-

SHEET 1 OF 3

STATE OF NORTH CAROLINA  
 DEPARTMENT OF TRANSPORTATION  
 RALEIGH

**SUBSTRUCTURE**

END BENT 1

DocuSigned by:  
 Paul J. Barber  
 180F1857588741E...

DocuSigned by:  
 David W. Hawkins  
 A0E075248B55487...

**SEAL 27812**  
 ENGINEER  
 DAVID W. HAWKINS

**SEAL 12916**  
 ENGINEER  
 PAUL J. BARBER

1/29/2016 1/29/2016

**HNTB** HNTB NORTH CAROLINA, P.C.  
 NC License No. C-1554  
 343 E. Six Forks Rd., Suite 200, Raleigh, N.C. 27609

DRAWN BY: M. WRIGHT DATE: 11/14  
 CHECKED BY: D. HAWKINS DATE: 3/15

DWG. NO. 28

DOCUMENT NOT CONSIDERED FINAL  
 UNLESS ALL SIGNATURES COMPLETED

REVISIONS						SHEET NO. S01-28
NO.	BY	DATE	NO.	BY	DATE	
1			3			TOTAL SHEETS
2			4			42