

PART SECTION AT END OF SLAB
TYPICAL SECTION AT END BENT

NOTE A: THE HEIGHT OF THE BEAM BOLSTER VARIES ALONG THE LENGTH OF THE SPAN DUE TO CAMBER AND THE VARYING HEIGHT REQUIRED FOR THE BUILDUP. THE CONTRACTOR SHALL HAVE SUFFICIENT SIZES TO PROPERLY SUPPORT THE REINFORCING STEEL.

NOTE B: TO MAINTAIN PROPER LOCATION OF "A" BARS IN TOP OF SLAB, BBU DEPTH MUST VARY IN UNIT AS THE MAXIMUM SIZE OF THE "B" BARS IN THE TOP OF SLAB VARIES. A 2 1/2" BBU SHALL BE USED WHERE ONLY #4 AND #5 "B" BARS ARE PRESENT. WHERE #6 "B" BARS ARE PRESENT, A 2 1/4" BBU SHALL BE USED.

NOTES
ALL HORIZONTAL DIMENSIONS SHOWN NORMAL TO \odot SURVEY UNLESS NOTED OTHERWISE.

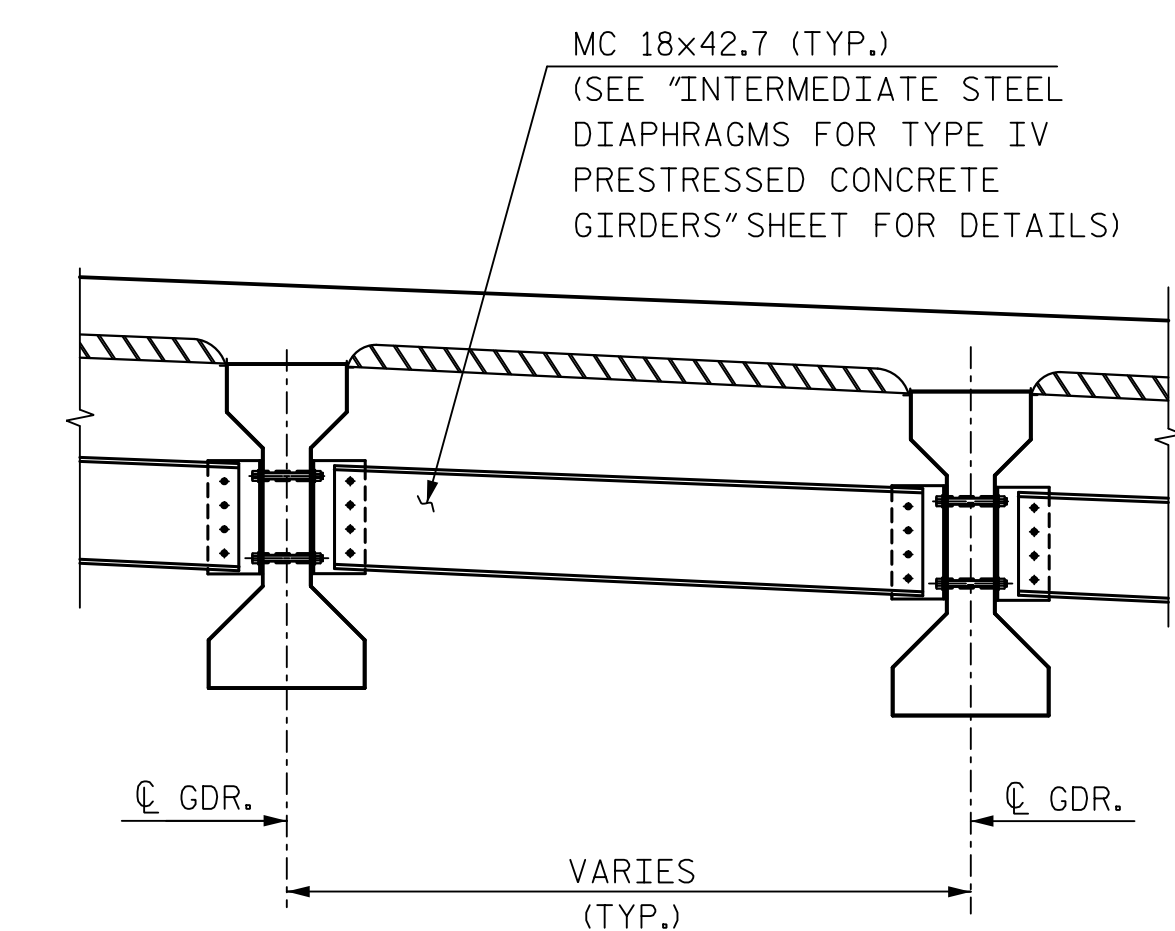
PROVIDE 1 1/4" HIGH BEAM BOLSTERS UPPER AT 4'-0" CTS. ATOP THE METAL STAY-IN-PLACE FORMS TO SUPPORT THE BOTTOM MAT OF 'A' BARS. WHEN USING REMOVABLE FORMS, PROVIDE CONTINUOUS HIGH CHAIRS FOR METAL DECK (CHCM) AT 4'-0" CTS. WITH A HEIGHT TO SUPPORT THE BOTTOM MAT OF 'A' BARS A CLEAR DISTANCE OF 2 1/2" ABOVE THE TOP OF THE REMOVABLE FORM.

LONGITUDINAL STEEL MAY BE SHIFTED SLIGHTLY, AS NECESSARY, TO AVOID INTERFERENCE WITH STIRRUPS IN PRESTRESSED CONCRETE GIRDERS.

PREVIOUSLY CAST CONCRETE IN A CONTINUOUS UNIT SHALL HAVE ATTAINED A MINIMUM COMPRESSIVE STRENGTH OF 3,000 PSI BEFORE ADDITIONAL CONCRETE IS CAST IN THE UNIT.

NO CHAMFER IS REQUIRED ON CORNERS OF GIRDER BUILDBUPS.

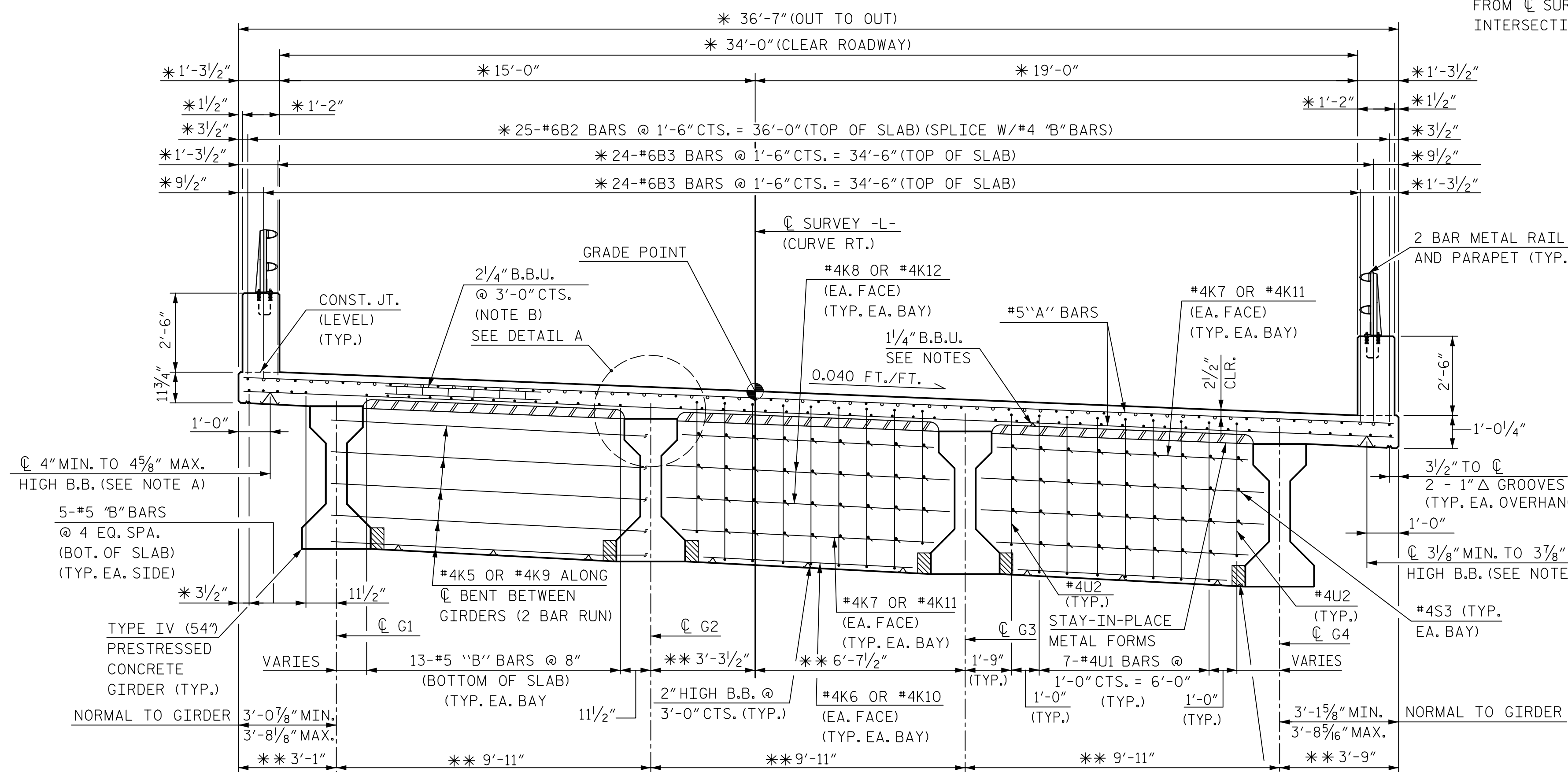
THE #5G1 BAR AND #5G2 BAR MAY BE SHIFTED SLIGHTLY, AS NECESSARY TO CLEAR REINFORCING STEEL AND STIRRUPS.



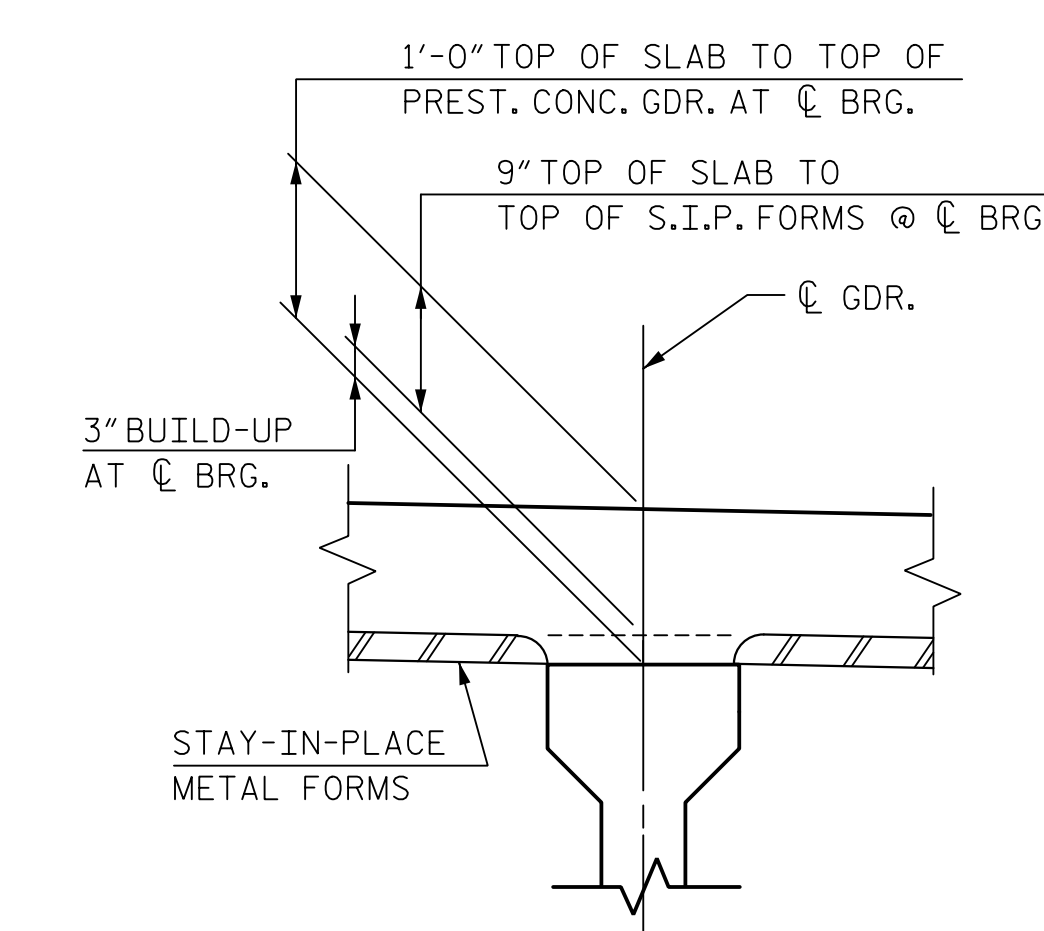
PARTIAL TYPICAL SECTION (SHOWING INTERMEDIATE DIAPHRAGM)

* RADIAL DIMENSIONS
** RADIAL TO CONCENTRIC ARCS AT CONTROL LINES

NOTE: GIRDER CENTERLINES WERE ESTABLISHED AS CHORDED LINES OF CONCENTRIC ARCS OFFSET FROM \odot SURVEY -L- AND BENT CONTROL LINE INTERSECTIONS.



TYPICAL SECTION AT BENT



DETAIL A

"B" BAR KEY:
 • = CONTINUOUS BAR RUN
 ○ = NON CONTINUOUS BAR RUN FOR NEGATIVE MOMENT REGIONS. SEE PLAN OF SPAN SHEETS.

NOTE: BUILD-UP VARIES BETWEEN \odot BEARINGS

DocuSigned by:
David W. Hawkins
3AED7524B855487

DocuSigned by:
Paul J. Barber
3AED7524B855487

1/29/2016

1/29/2016

HNTB HNTB NORTH CAROLINA, P.C.
 NC License No. C-1554
 343 E. Six Forks Rd., Suite 200, Raleigh, N.C. 27609

DRAWN BY: J. BAYNE DATE: 10/14
 CHECKED BY: P. BARBER DATE: 4/15

DWG. NO. 6

PROJECT NO. B-4811
 RUTHERFORD COUNTY
 STATION: POC 15+25.00 -L-

SHEET 1 OF 2

STATE OF NORTH CAROLINA DEPARTMENT OF TRANSPORTATION RALEIGH					
SUPERSTRUCTURE					
TYPICAL SECTION					
REVISIONS					
NO.	BY	DATE	NO.	BY	DATE
1			3		
2			4		

SHEET NO. S01-6
 TOTAL SHEETS 42

DOCUMENT NOT CONSIDERED FINAL UNLESS ALL SIGNATURES COMPLETED