

5/14/99

PROJECT REFERENCE NO. <b>B-4811</b>	SHEET NO. <b>5</b>
ROADWAY DESIGN ENGINEER SEAL 033296 Steven D. Kendall ENGR. IN CH.	HYDRAULICS ENGINEER SEAL 015764 James A. Byrd ENGR. IN CH.
DocuSigned by: Steven D. Kendall 1/20/2016	DocuSigned by: James A. Byrd 1/20/2016

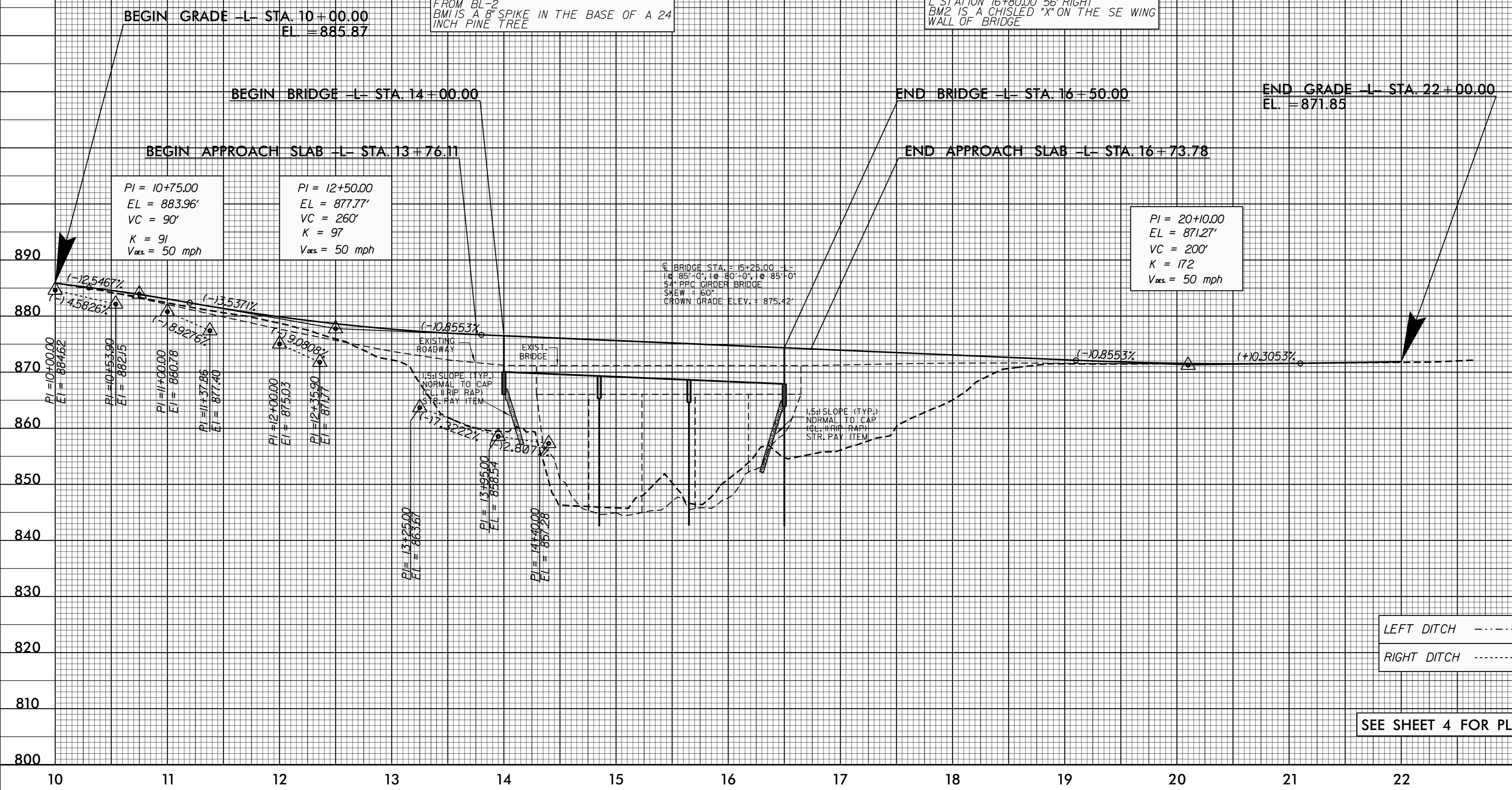
**DOCUMENT NOT CONSIDERED FINAL  
UNLESS ALL SIGNATURES COMPLETED**

**BRIDGE HYDRAULIC DATA**

DESIGN DISCHARGE = 30,900 CFS  
DESIGN FREQUENCY = 50 YRS  
DESIGN HW ELEVATION = 866.50 FT  
BASE DISCHARGE = 41,500 CFS  
BASE FREQUENCY = 100 YRS  
BASE HW ELEVATION = 872.24 FT  
OVERTOPPING DISCHARGE = 38,000 CFS  
OVERTOPPING FREQUENCY = 100 YRS  
OVERTOPPING ELEVATION = 871.64 FT  
DATE OF SURVEY = 03/25/14  
W.S. ELEVATION AT DATE OF SURVEY = 845.80 FT

BM1 ELEVATION = 902.40  
N 624128 E 1056324  
LOCATED S 6°40'28.99" E Dist 379.46'  
FROM BL-2  
BM1 IS A 8" SPIKE IN THE BASE OF A 24 INCH PINE TREE

BM2 ELEVATION = 870.49  
N 624527 E 1057299  
L STATION 16+80.00 56' RIGHT  
BM2 IS A CHISELED "X" ON THE SE WING WALL OF BRIDGE



LEFT DITCH - - - - -  
RIGHT DITCH - - - - -

SEE SHEET 4 FOR PLAN VIEW

30-DEC-2015 15:03 04811\_Rdy.plt.dgn  
44360782811.dwg