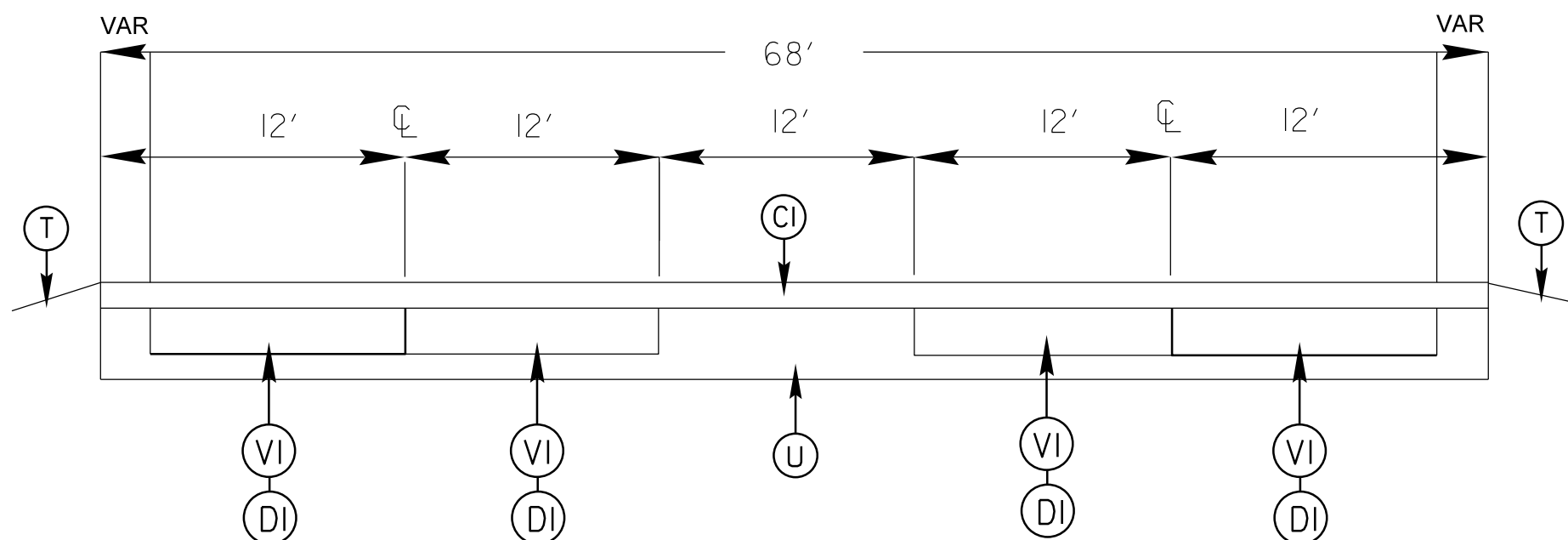
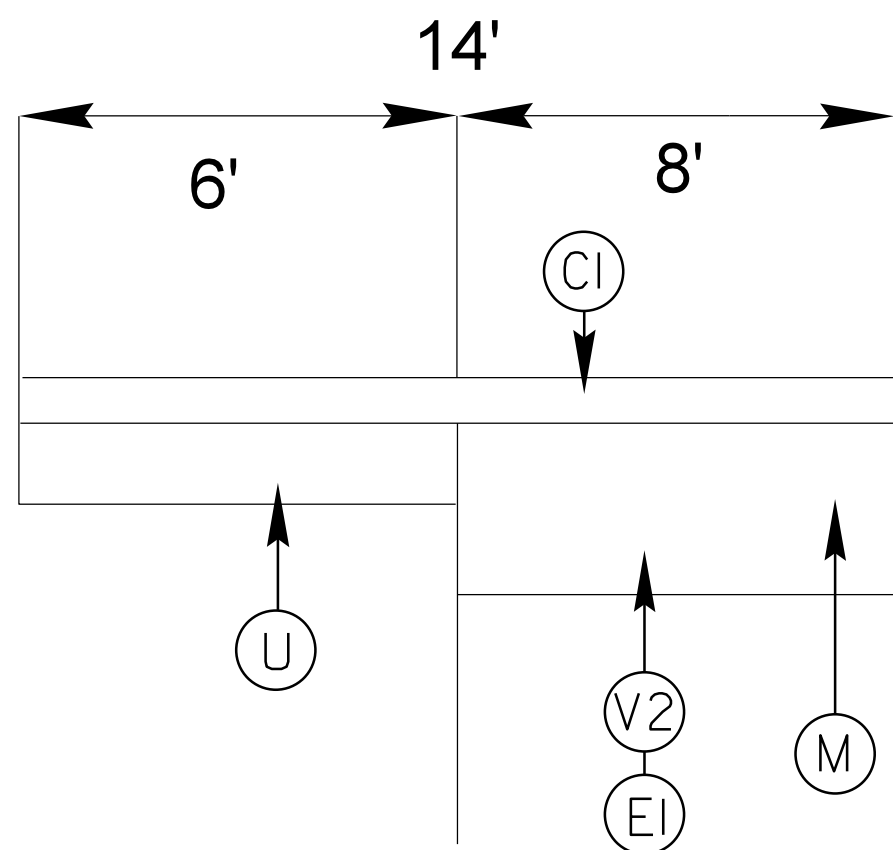


| | | | |
|------------------------|------------------|-------------|--|
| PROJECT REFERENCE NO. | | SHEET NO. | |
| 2016.CPT.14.13.10501.1 | | 2 | |
| STATE PROJECT | F.A. PROJECT NO. | DESCRIPTION | |
| 2016CPT.14.13.10501.1 | | | |
| | | | |
| | | | |
| | | | |
| | | | |

TYPICAL 1



SHOULDER TYPICAL



SURFACING SCHEDULE

| ITEM NO | DESCRIPTION |
|---------|--|
| C1 | PROP. APPROX. 1 1/2" ASPHALT CONCRETE SURFACE COURSE, TYPE S9.5C, AT AN AVERAGE RATE OF 168 LBS. PER SQ. YD |
| D1 | PROP. APPROX. 3" ASPHALT CONCRETE INTERMEDIATE COURSE, TYPE I19.0C, AT A AVERAGE RATE OF 342 LBS PER SQ. YD. |
| E1 | PROP. APPROX. 5 1/2" ASPHALT CONCRETE BASE COURSE, TYPE B25.0B, AT AVERAGE RATE OF 627 LBS PER SQ. YD |
| M | SOIL OR BASE COURSE MATERIAL |
| V1 | MILLED ASPHALT PAVEMENT 3 " IN DEPTH AT LOCATIONS AS DIRECTED BY PROJECT ENGINEER |
| V2 | SHOULDER MILLING ASPHALT PAVEMENT 5 1/2 " IN DEPTH AT LOCATIONS AS DIRECTED BY PROJECT ENGINEER |
| T | SHOULDER RECONSTRUCTION |
| U | EXISTING ASPHALT |

NOTE

SHOULDER TYPICAL IS LOCATED AT MACON CO LINE FOR EXTENDED WIDTH SHOULDER: APPROX 500' LENGTH 14' APPROX