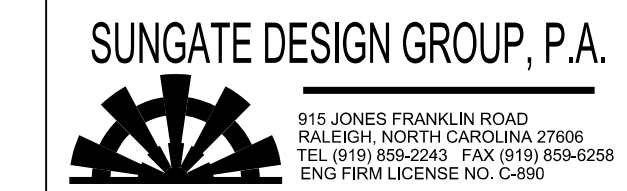


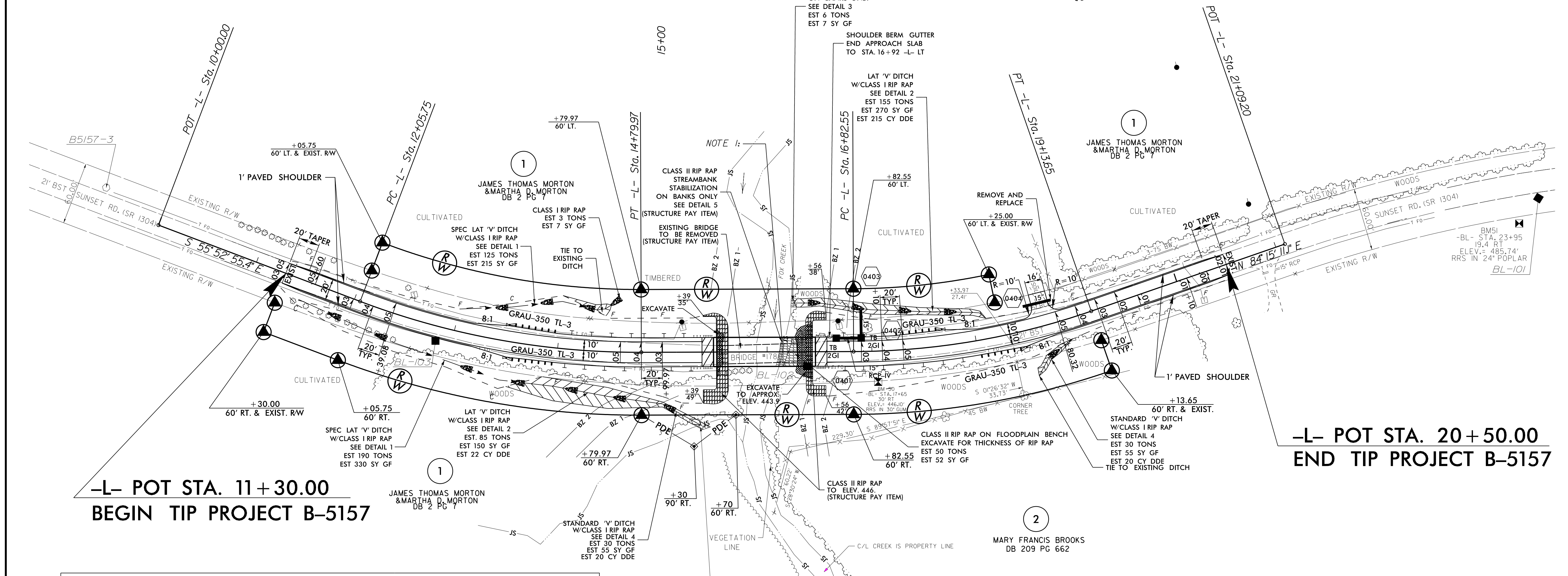
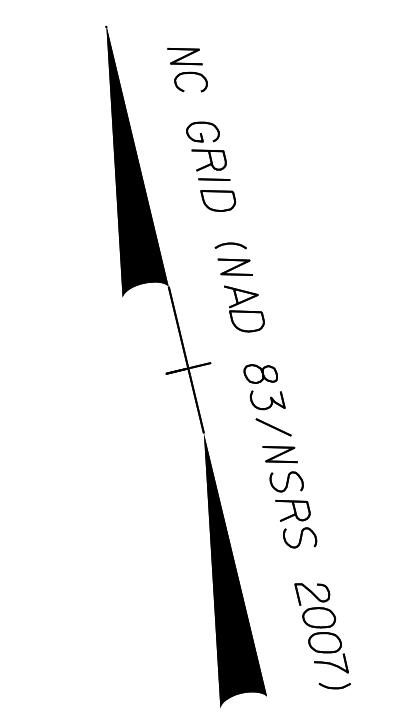
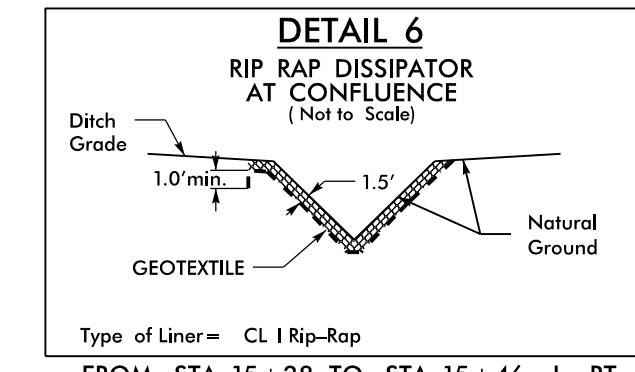
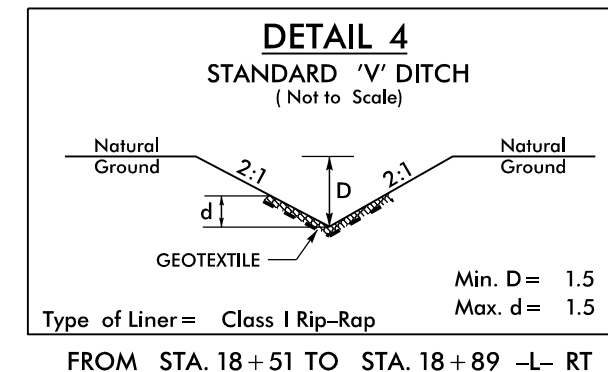
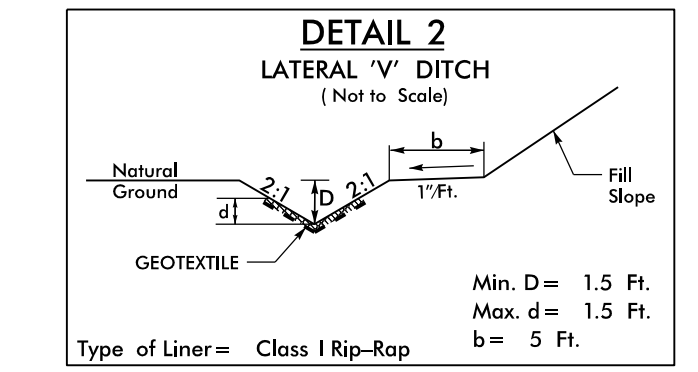
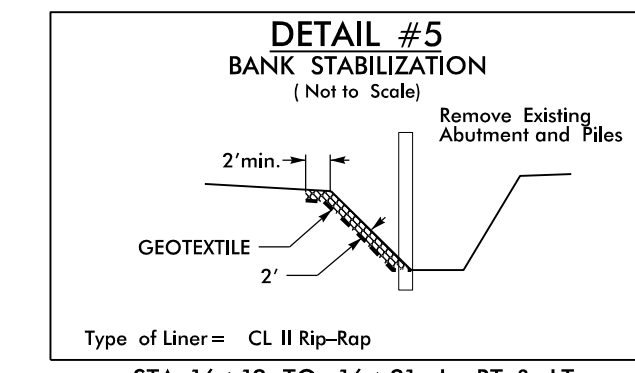
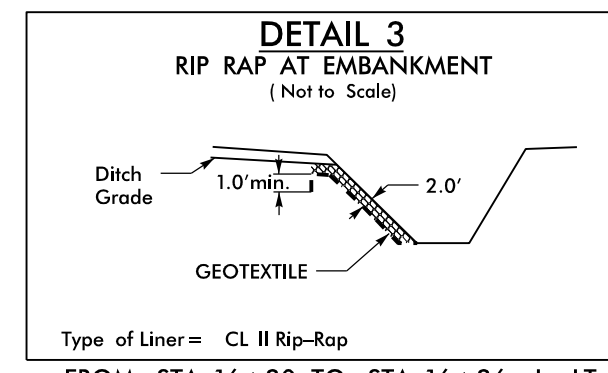
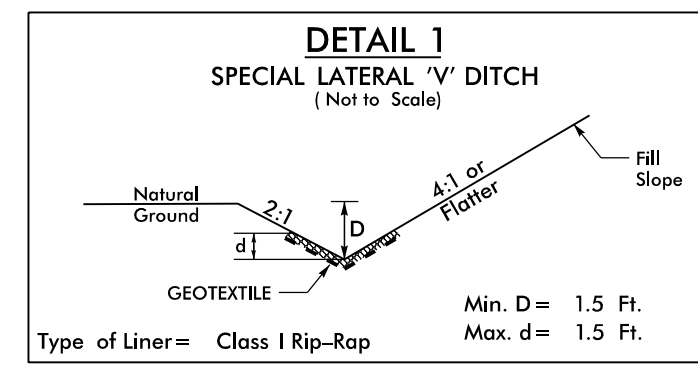
5/14/2016



Stantec Consulting Services Inc.
801 Jones Franklin Road
Suite 300
Raleigh, NC 27606
Tel. (919) 851-6866
Fax (919) 851-7024
www.stantec.com
License No. F-0672

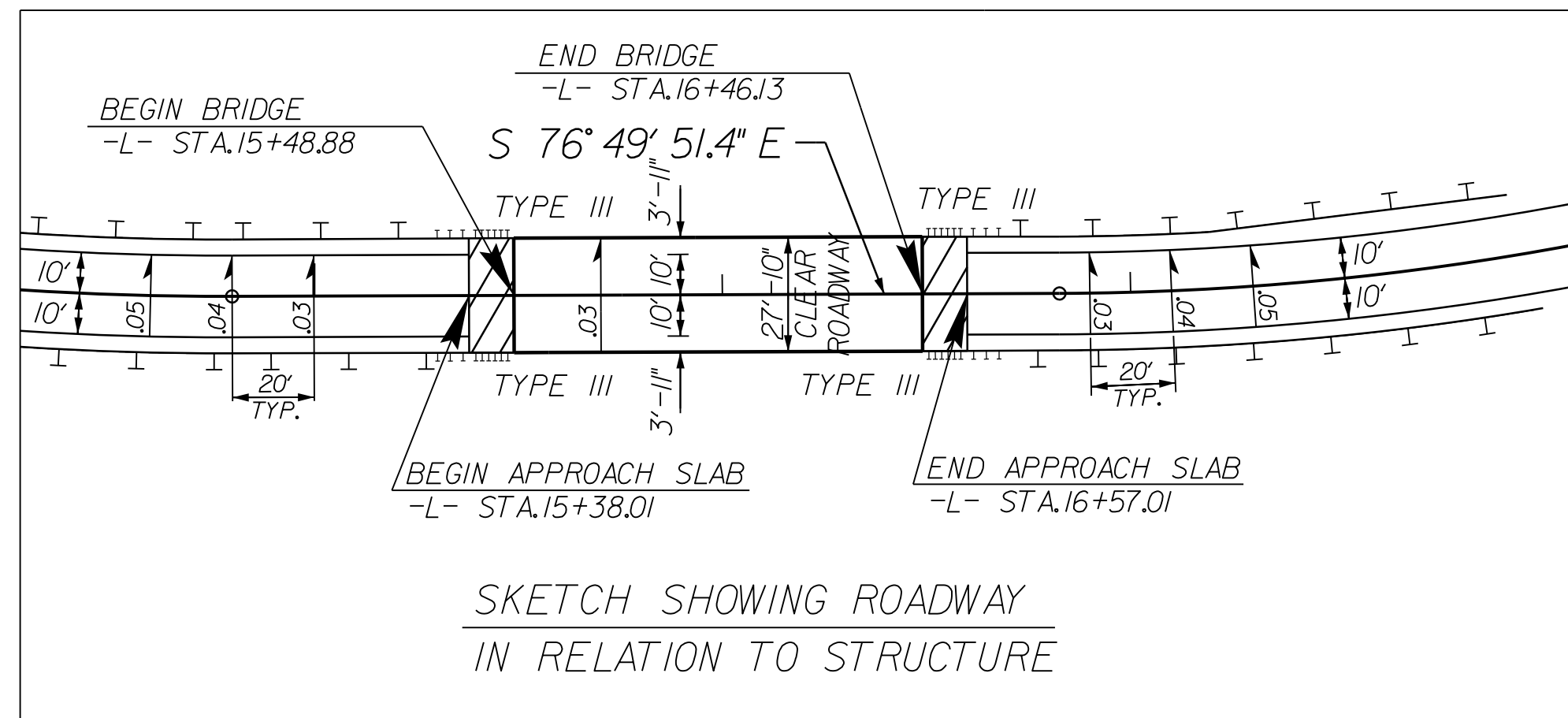


PROJECT REFERENCE NO. B-5157	SHEET NO. 4
RW SHEET NO.	
ROADWAY DESIGN ENGINEER SEAL 022037 2/23/2016 Steligen Smallwood	HYDRAULICS ENGINEER SEAL 26971 2/23/2016 Joshua G. Dalton
SEAL NOT VALID UNLESS SIGNED AND DATED	



-L- POT STA. 11+30.00
BEGIN TIP PROJECT B-5157

-L- POT STA. 20+50.00
END TIP PROJECT B-5157



-L- CURVE DATA

PI Sta 13+44.1	PI Sta 17+99.6
Δ = 20° 56' 56.0" (LT)	Δ = 18° 54' 57.6" (LT)
D = 7° 38' 22.0"	D = 8° 11' 06.4"
L = 274.22'	L = 231.10'
T = 138.66'	T = 116.61'
R = 750.00'	R = 700.00'
DS = 35 MPH	DS = 35 MPH
SE = .05	SE = .05

NOTE 1: REMOVAL OF EXISTING STRUCTURE
CONCRETE FOOTER TO BE CONSIDERED
INCIDENTAL TO STRUCTURE REMOVAL WORK.

DO NOT DISTURB STREAM
BEYOND STREAM IMPACT AREA

DENOTES APPROACH SLAB

FOR -L- PROFILE SEE SHEET 5

SEE SHEETS S-1 THRU S-15
FOR STRUCTURE PLANS

U:\Projects\2016\B5157_rdy.psh.dgn
5/14/2016 10:50:11 AM