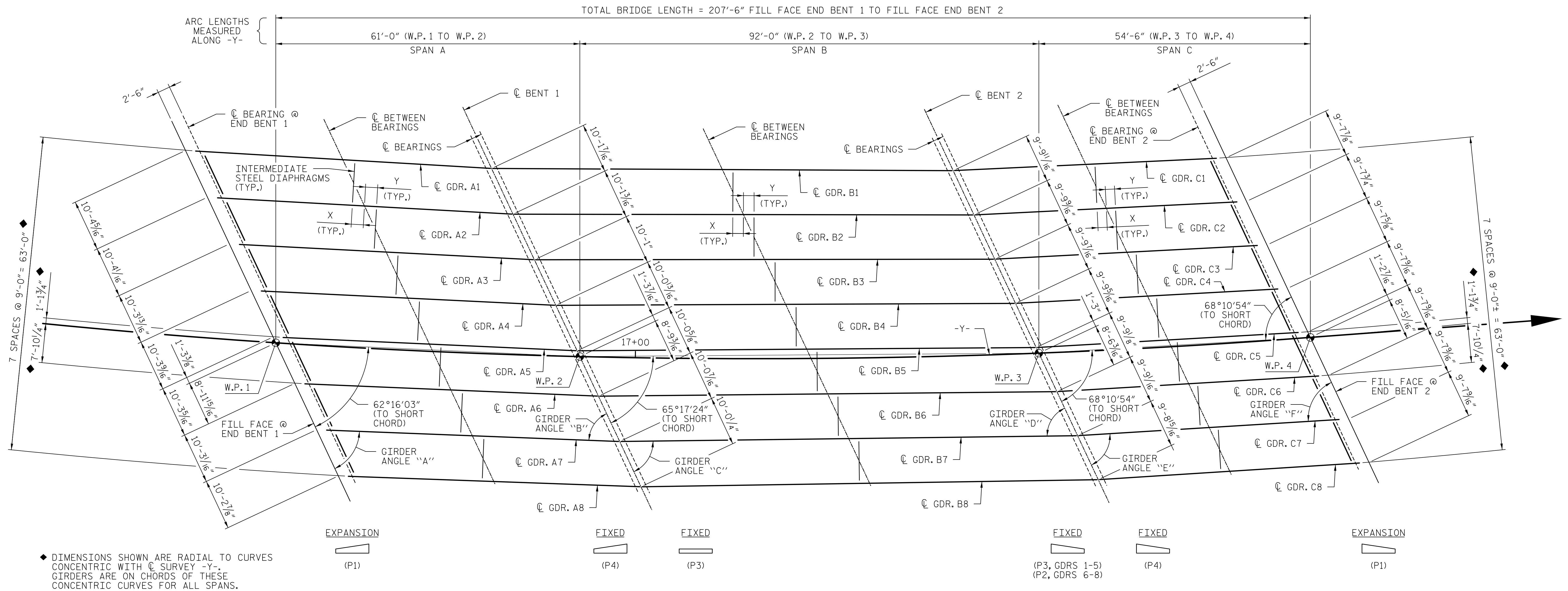


NOTES:

- FOR BEARING AND SOLE PLATE SIZES, SEE "ELASTOMERIC BEARING DETAILS" SHEET.



FRAMING PLAN

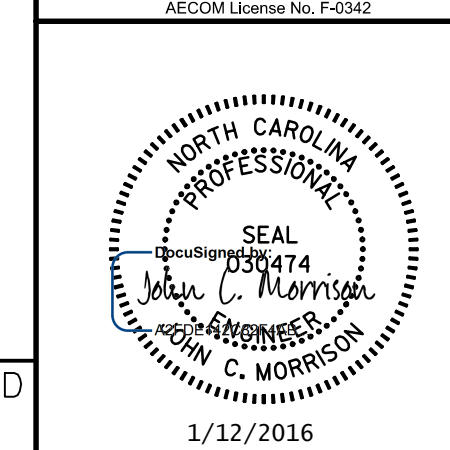
	SPAN A		SPAN B		SPAN C	
	X	Y	X	Y	X	Y
G1	-	2'-5 ⁵ / ₁₆ "	-	2'-1 ⁵ / ₈ "	-	1'-10 ⁵ / ₁₆ "
G2	2'-5 ⁵ / ₁₆ "	2'-5 ¹ / ₁₆ "	2'-1 ⁵ / ₈ "	2'-1 ¹ / ₂ "	1'-10 ⁵ / ₁₆ "	1'-10 ¹ / ₈ "
G3	2'-5 ¹ / ₁₆ "	2'-4 ³ / ₁₆ "	2'-1 ⁷ / ₁₆ "	2'-1 ¹ / ₄ "	1'-10 ¹ / ₈ "	1'-10"
G4	2'-4 ³ / ₁₆ "	2'-4 ⁹ / ₁₆ "	2'-1 ¹ / ₄ "	2'-1 ¹ / ₁₆ "	1'-10"	1'-9 ³ / ₁₆ "
G5	2'-4 ⁵ / ₈ "	2'-4 ³ / ₈ "	2'-1 ¹ / ₁₆ "	2'-0 ⁷ / ₈ "	1'-9 ³ / ₁₆ "	1'-9 ¹ / ₁₆ "
G6	2'-4 ³ / ₈ "	2'-4 ³ / ₁₆ "	2'-0 ⁷ / ₈ "	2'-0 ¹ / ₁₆ "	1'-9 ¹ / ₁₆ "	1'-9 ¹ / ₂ "
G7	2'-4 ¹ / ₈ "	2'-3 ¹⁵ / ₁₆ "	2'-0 ¹ / ₁₆ "	2'-0 ¹ / ₂ "	1'-9 ¹ / ₂ "	1'-9 ³ / ₈ "
G8	2'-3 ¹⁵ / ₁₆ "	-	2'-0 ¹ / ₂ "	-	1'-9 ³ / ₈ "	-

NOTE: DIMENSION X AND Y ARE MEASURED FROM CL GIRDERS.

GIRDER	ANGLE "A"	ANGLE "B"	ANGLE "C"	ANGLE "D"	ANGLE "E"	ANGLE "F"
1	61°29'44"	61°29'47"	64°35'43"	64°35'42"	67°33'22"	67°33'19"
2	61°41'32"	61°41'36"	64°46'03"	64°46'03"	67°42'21"	67°42'19"
3	61°53'11"	61°53'15"	64°56'15"	64°56'14"	67°51'13"	67°51'11"
4	62°04'40"	62°04'43"	65°06'18"	65°06'18"	67°59'58"	67°59'56"
5	62°15'58"	62°16'02"	65°16'13"	65°16'13"	68°08'35"	68°08'32"
6	62°27'08"	62°27'11"	65°26'00"	65°25'59"	68°16'38"	68°16'36"
7	62°38'08"	62°38'11"	65°35'39"	65°35'38"	68°24'05"	68°24'03"
8	62°48'58"	62°49'02"	65°45'10"	65°45'09"	68°30'55"	68°30'53"

PROJECT NO. U-2707
FORSYTH COUNTY
 STATION: 17+34.88 -Y-

BRIDGE NO. 109



STATE OF NORTH CAROLINA
 DEPARTMENT OF TRANSPORTATION
 RALEIGH

**SUPERSTRUCTURE
 FRAMING PLAN**

REVISIONS						SHEET NO.
NO.	BY:	DATE:	NO.	BY:	DATE:	TOTAL SHEETS
1			3			
2			4			

DRAWN BY: DDL DATE: 4/2015
 CHECKED BY: JCM DATE: 4/2015

DOCUMENT NOT CONSIDERED
 FINAL UNLESS ALL
 SIGNATURES COMPLETED

1/12/2016