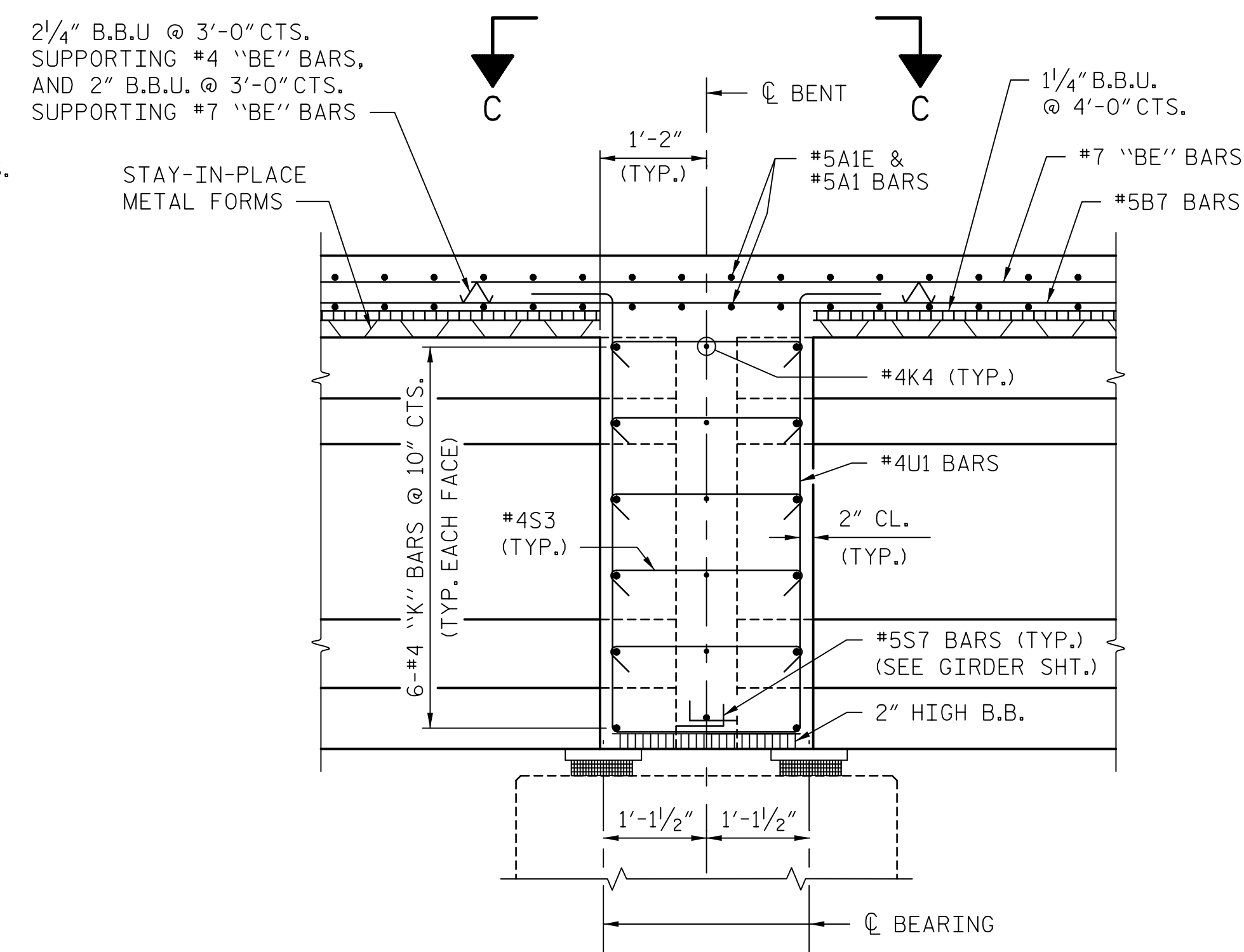
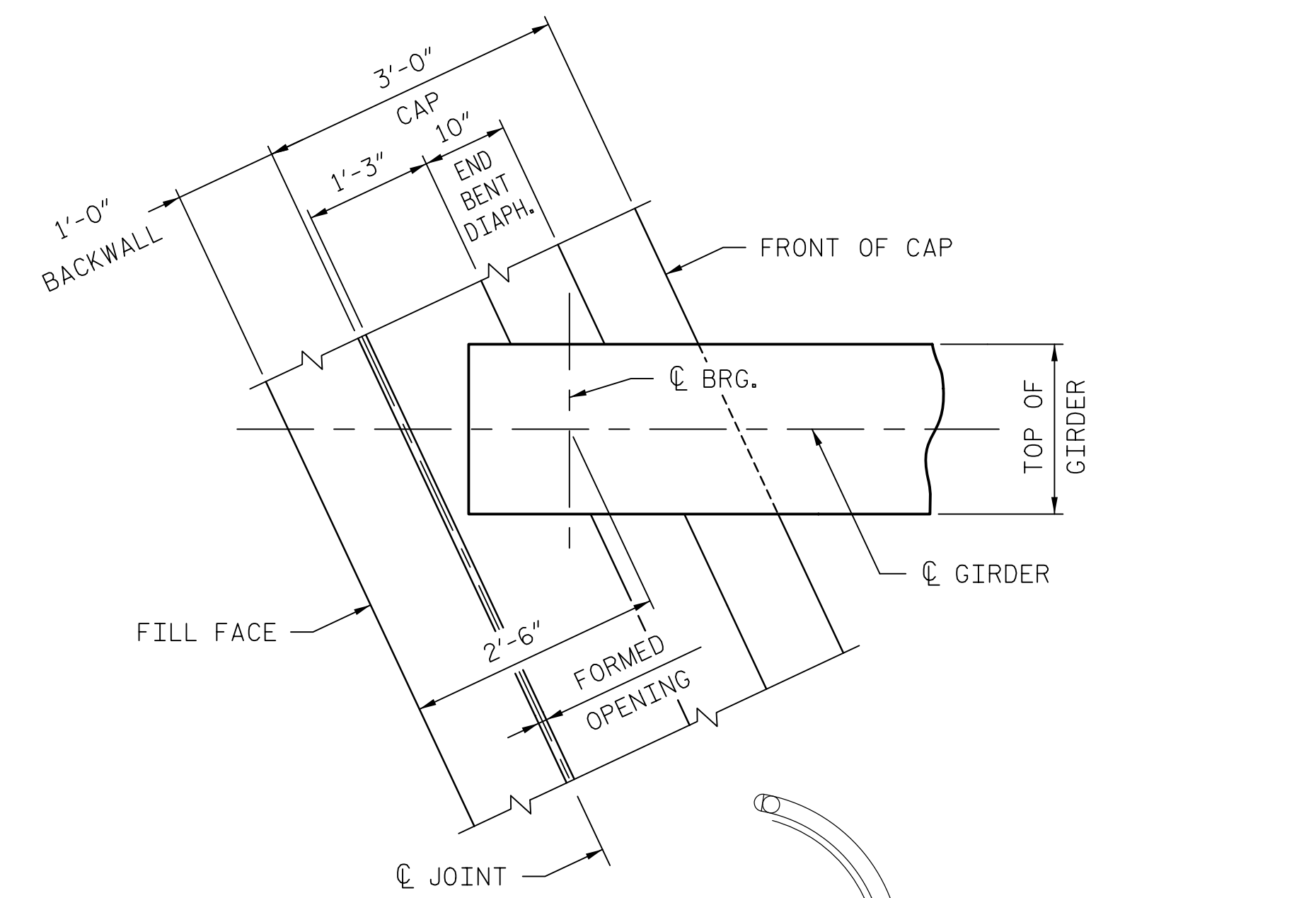


**SECTION A-A**  
(END BENT 1 SHOWN, END BENT 2 SIMILAR)

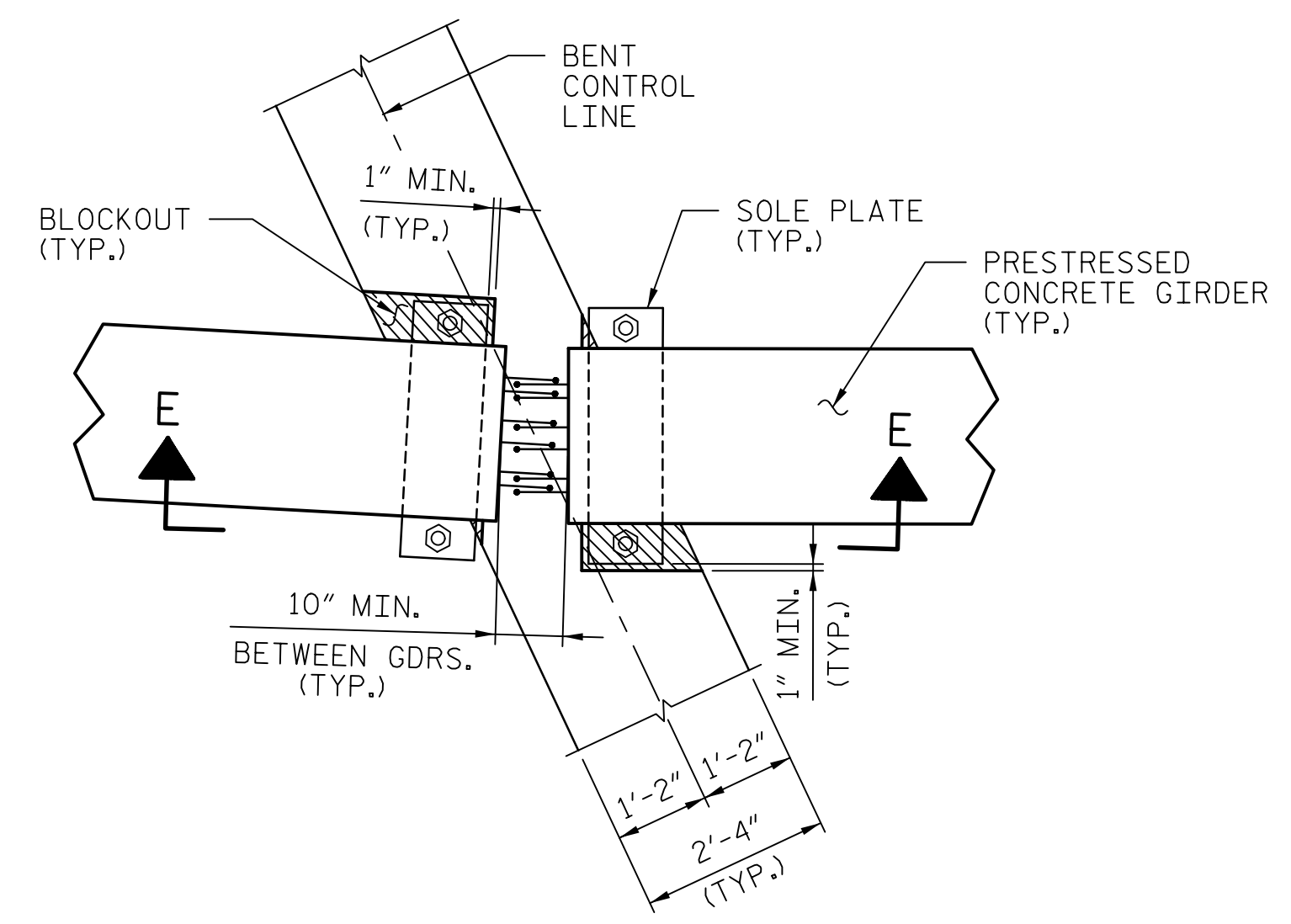
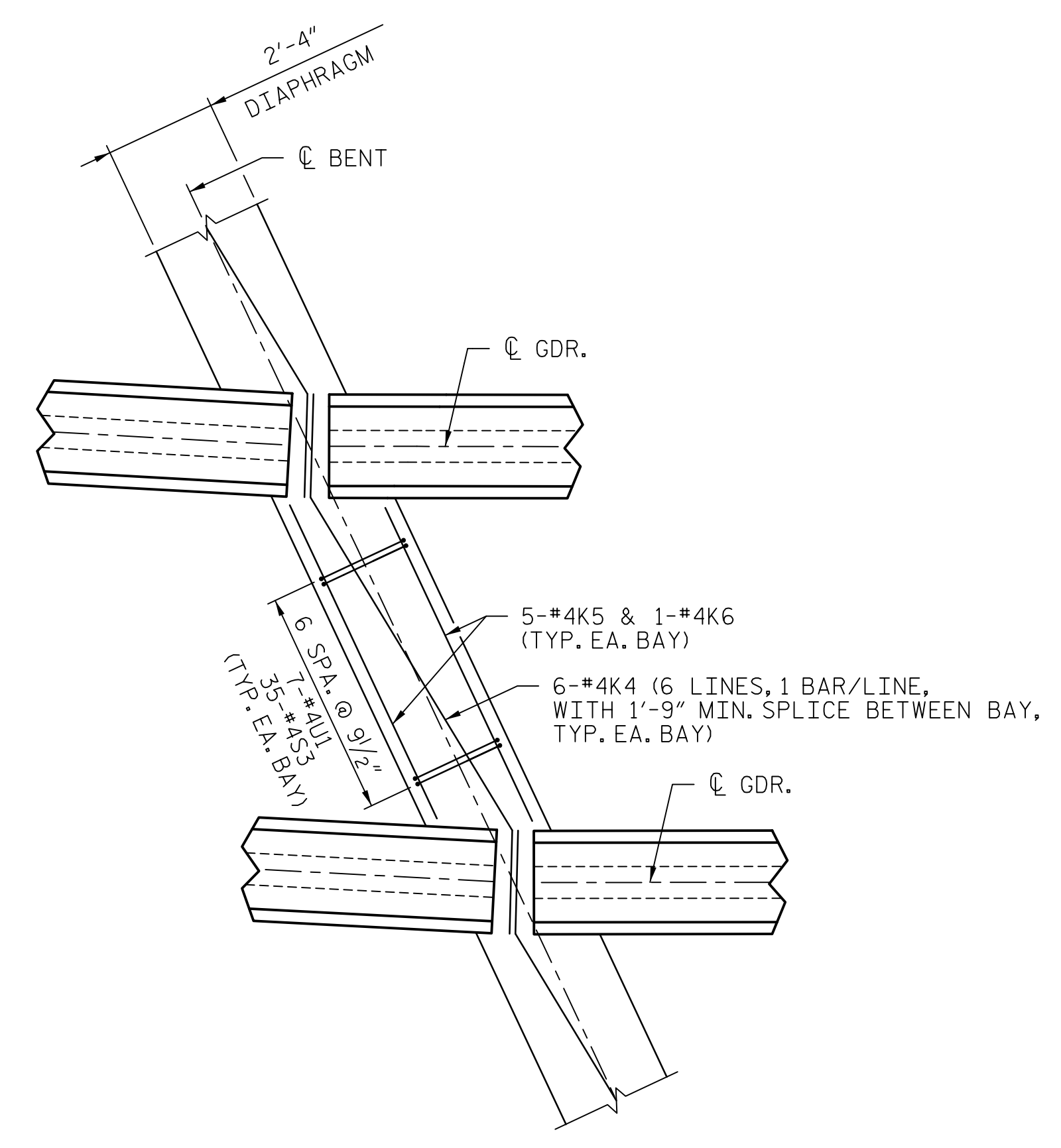
\* #5 "G" BARS MAY BE SHIFTED SLIGHTLY, AS NECESSARY, TO CLEAR REINFORCING STEEL AND STIRRUPS.



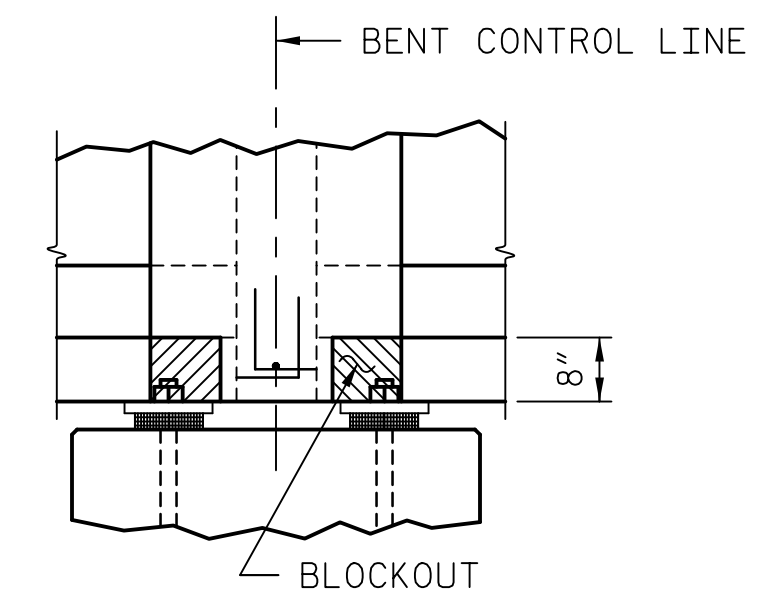
**SECTION B-B**



**VIEW D-D**

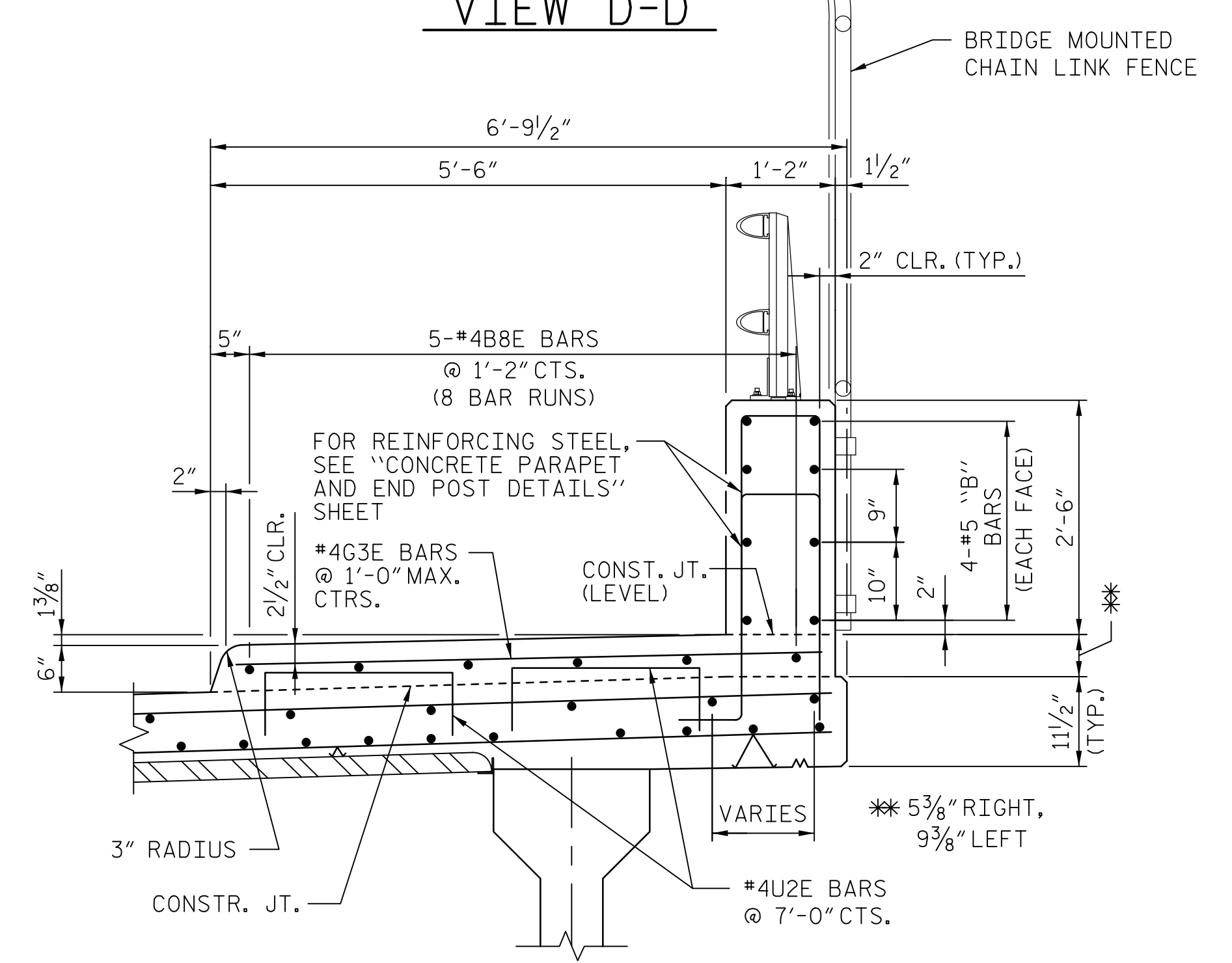


**PLAN VIEW**



**SECTION E-E**

**BENT DIAPHRAGM BLOCKOUT DETAIL**



**SECTION THRU SIDEWALK**  
(RIGHT SIDE SHOWN, LEFT SIDE SIMILAR)

PROJECT NO. U-2707  
**FORSYTH COUNTY**  
 STATION: 17+34.88 -Y-  
 SHEET 2 OF 2 BRIDGE NO. 109

**AECOM**  
 AECOM TECHNICAL SERVICES, INC.  
 701 CORPORATE CENTER DRIVE, SUITE 475  
 RALEIGH, NC 27607  
 (919) 854-6200 www.aecom.com  
 AECOM License No. F-0342

SEAL  
 NORTH CAROLINA PROFESSIONAL ENGINEER  
 JOHN C. MORRIS  
 1/12/2016

STATE OF NORTH CAROLINA  
 DEPARTMENT OF TRANSPORTATION  
 RALEIGH

**SUPERSTRUCTURE  
 TYPICAL SECTION DETAILS**

REVISIONS					
NO.	BY:	DATE:	NO.	BY:	DATE:

SHEET NO. **S-49**  
 TOTAL SHEETS **86**

DOCUMENT NOT CONSIDERED  
 FINAL UNLESS ALL  
 SIGNATURES COMPLETED

DATE: 1/12/2016  
 TIME: 8:55:40 AM

USER: \\s01c01p01\proj\109\109-100-000-002-013-112707\_SML-549-T-502.dgn  
 DGN: R:\proj\109\109-100-000-002-013-112707\_SML-549-T-502.dgn

DRAWN BY: DDL DATE: 11/2015  
 CHECKED BY: JCM DATE: 11/2015