

END DIAPHRAGMS  
(AT END BENTS)

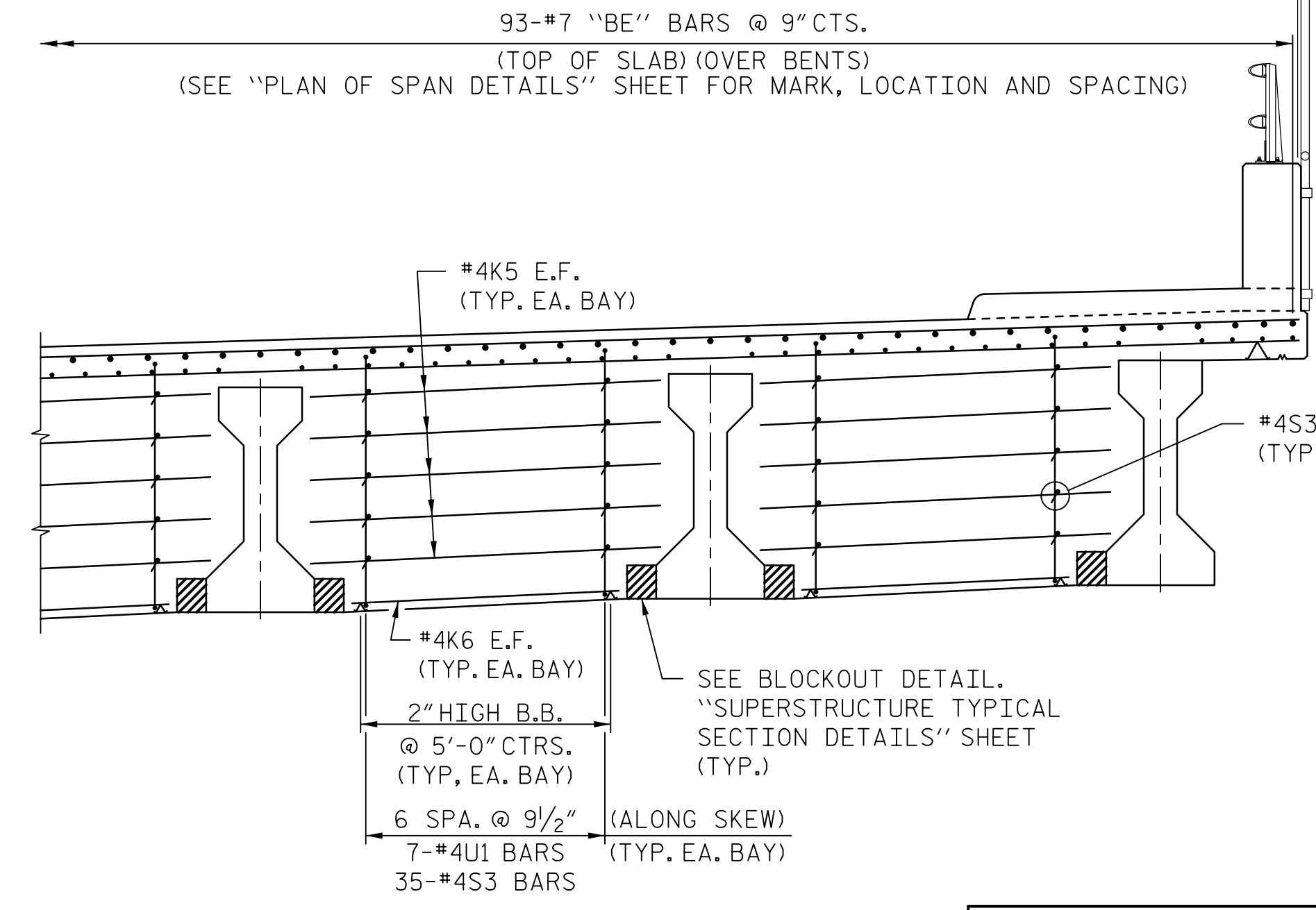
TYPICAL SECTION

INTERMEDIATE DIAPHRAGMS

**NOTES:**

- PROVIDE 1/4" HIGH BEAM BOLSTERS UPPER AT 4'-0" CTS. ATOP THE STAY-IN-PLACE METAL FORMS TO SUPPORT THE BOTTOM MAT OF "A" BARS. WHEN USING REMOVABLE FORMS, PROVIDE CONTINUOUS HIGH CHAIRS FOR METAL DECK (C.H.C.M.) AT 4'-0" CTS. WITH A HEIGHT TO SUPPORT THE BOTTOM MAT OF "A" BARS A CLEAR DISTANCE OF 1/4" ABOVE THE TOP OF THE REMOVABLE FORM.
- LONGITUDINAL STEEL MAY BE SHIFTED SLIGHTLY, AS NECESSARY, TO AVOID INTERFERENCE WITH STIRRUPS IN PRESTRESSED CONCRETE GIRDERS.
- PARAPET SHALL NOT BE CAST UNTIL CONCRETE SIDEWALK HAS BEEN CAST AND HAS REACHED A MINIMUM COMPRESSIVE STRENGTH OF 3,000 PSI.
- THE JOINT IN DECK SHALL BE SAWED PRIOR TO THE CASTING OF THE SIDEWALK.
- FOR INTERMEDIATE DIAPHRAGM DETAILS, SEE "PRESTRESSED CONCRETE GIRDER" SHEET 5 OF 5
- FOR END DIAPHRAGM AND BENT DIAPHRAGM SECTIONS, SEE "SUPERSTRUCTURE TYPICAL SECTION DETAILS" SHEET.

- \* DENOTES RADIAL DIMENSION
- \*\* DENOTES DIMENSIONS TO ARCS THAT ARE CONCENTRIC TO -Y-, GIRDERS ARE ON CHORDS OF THE CONCENTRIC ARCS.
- 3 SPAN CONTINUOUS FOR LIVE LOAD WITH COMPOSITE DECK ON 54" GIRDERS; STAY-IN-PLACE METAL FORMS



BENT DIAPHRAGMS  
(AT INTERIOR BENTS)

DOCUMENT NOT CONSIDERED  
FINAL UNLESS ALL  
SIGNATURES COMPLETED

PROJECT NO. U-2707  
 FORSYTH COUNTY  
 STATION: 17+34.88 -Y-  
 SHEET 1 OF 2 BRIDGE NO. 109

**AECOM**  
 AECOM TECHNICAL SERVICES, INC.  
 701 CORPORATE CENTER DRIVE, SUITE 475  
 RALEIGH, NC 27607  
 (919) 854-6200 www.aecom.com  
 AECOM License No. F-0342

SEAL  
 1030474  
 JOHN C. MORRISON  
 PROFESSIONAL ENGINEER  
 1/12/2016

STATE OF NORTH CAROLINA  
 DEPARTMENT OF TRANSPORTATION  
 RALEIGH

SUPERSTRUCTURE  
 TYPICAL SECTION

REVISIONS					
NO.	BY:	DATE:	NO.	BY:	DATE:

SHEET NO. **S-48**  
 TOTAL SHEETS **86**

DATE: 1/12/2016  
 TIME: 8:45:35 AM

USER: kmc  
 DGN: R:\Bridges\09\09\0402\01\112107\SMU\_S48\_T50.dgn

DRAWN BY: KHC DATE: 11/2015  
 CHECKED BY: JCM DATE: 11/2015