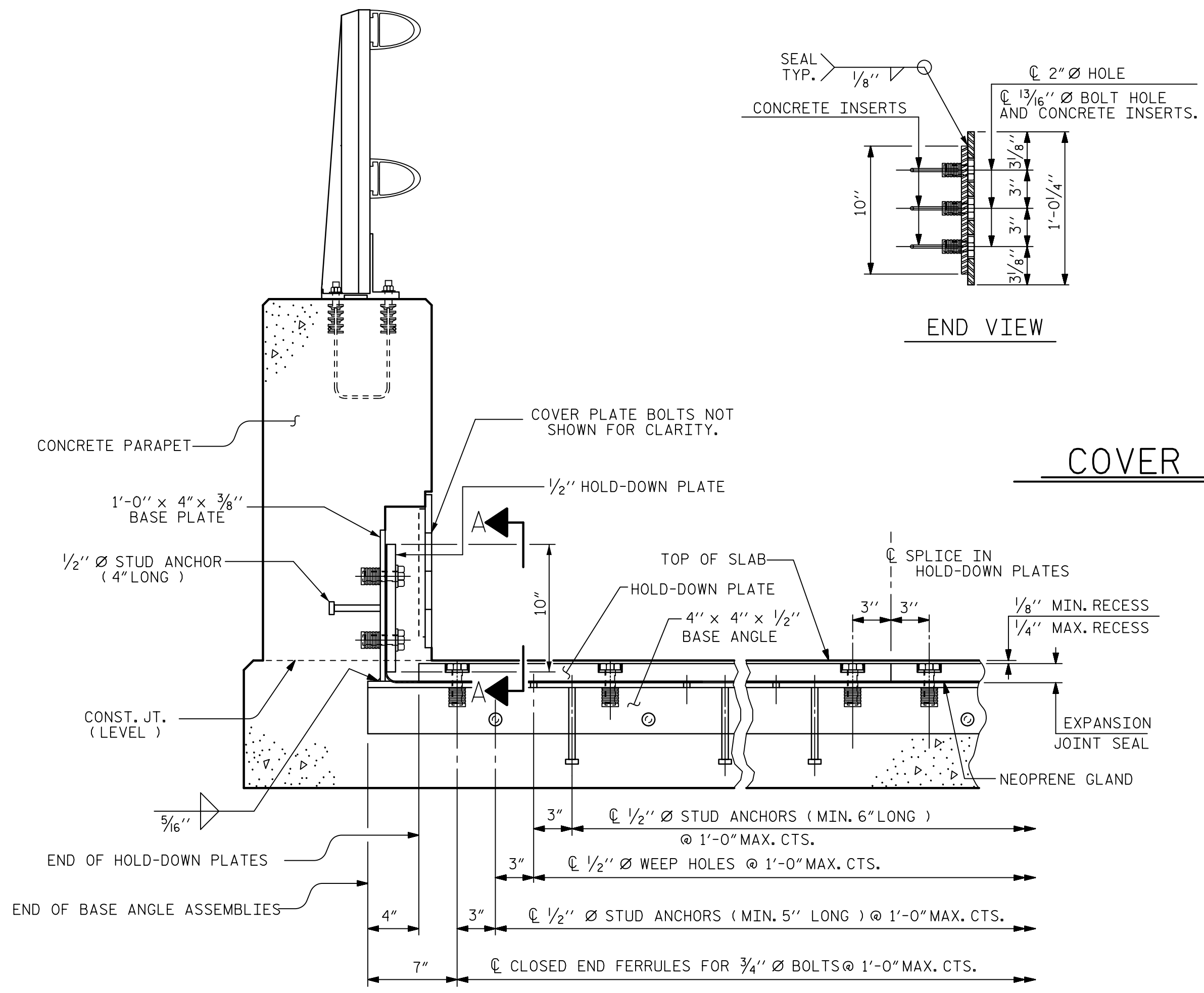
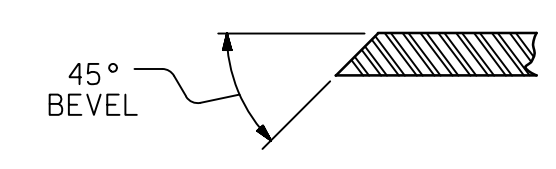


DATE: 1/12/2015
TIME: 9:25:54 AM

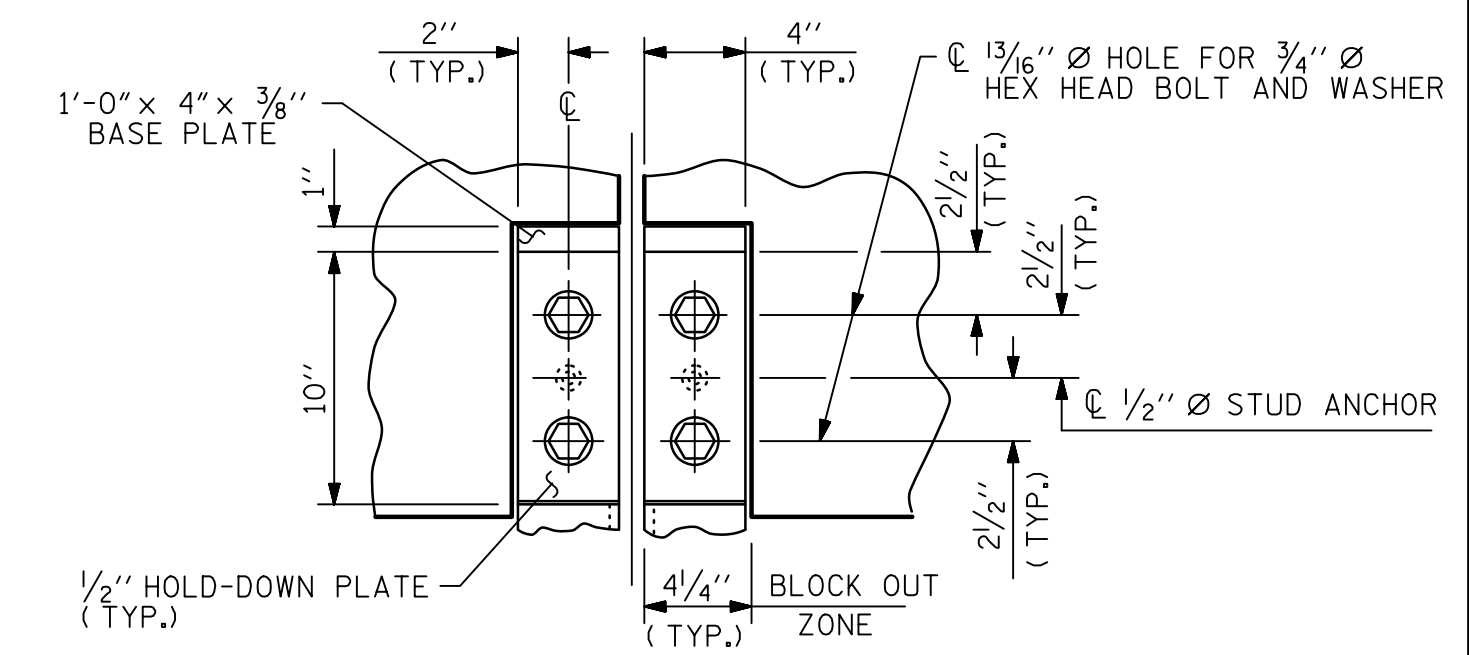
USER: kmc@aecom.com
JOB: R:\Bridge\656\Comp\401_057_U2707_SML_S29_EJS02.dgn



COVER PLATE DETAILS

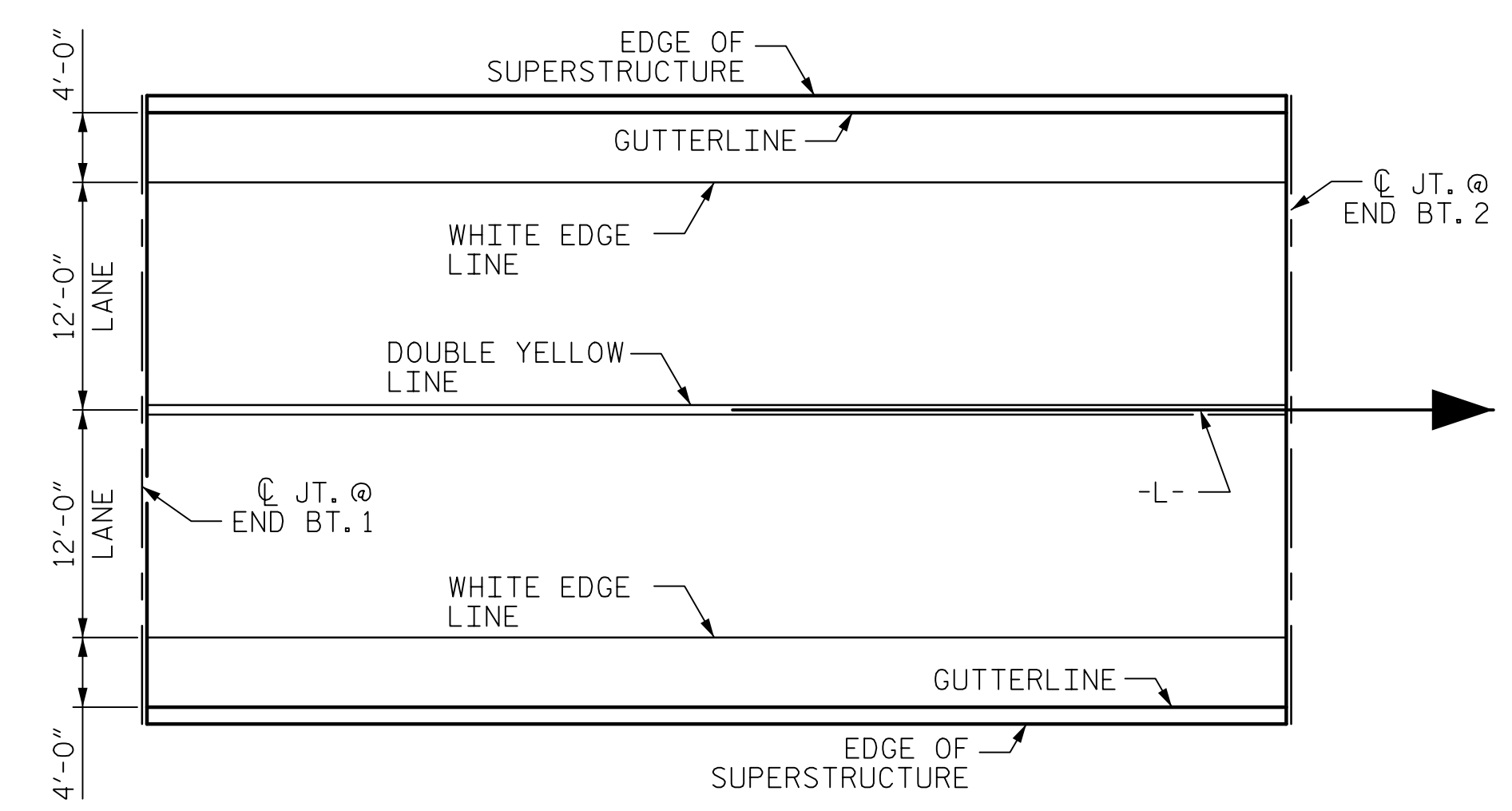


SECTION B - B

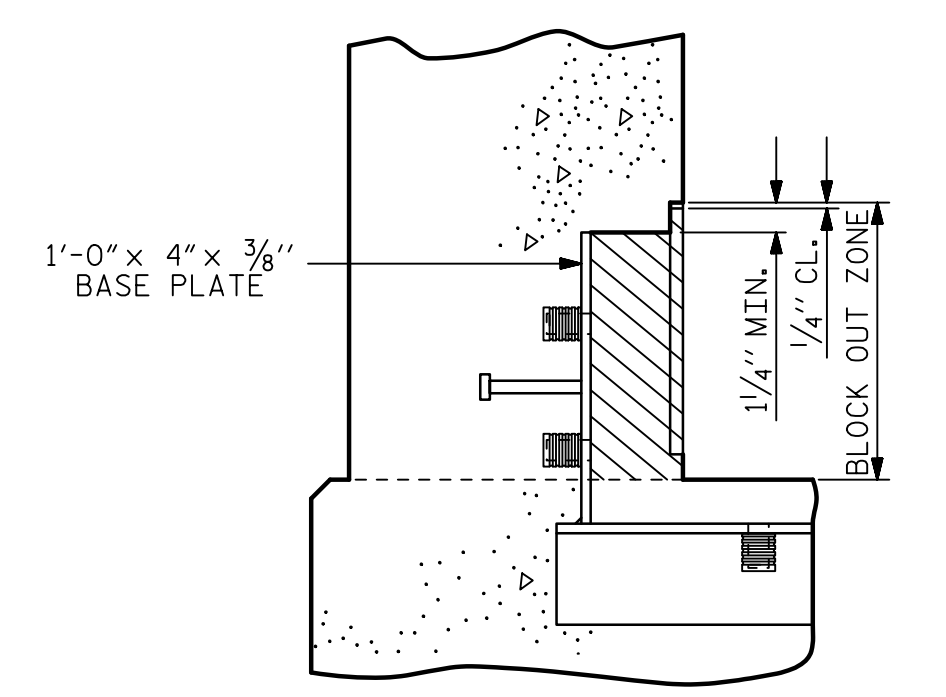


SECTION A - A

SECTION THRU RAIL NORMAL TO JOINT

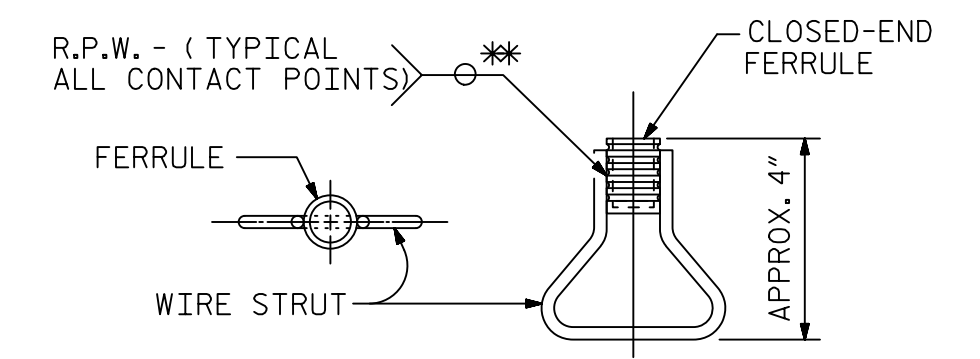


PAVEMENT MARKING ALIGNMENT



BLOCK OUT DETAIL

SEE "SECTION A - A" FOR OTHER DETAILS.



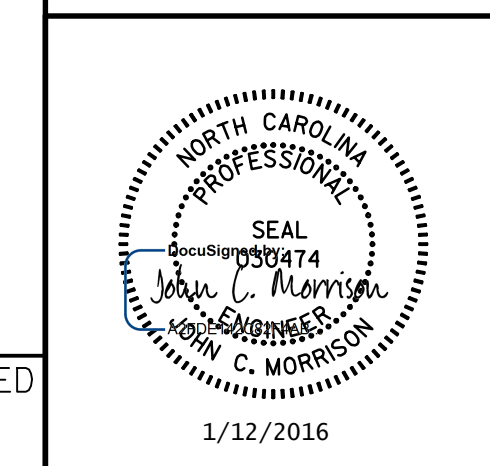
CONCRETE INSERT

* EACH WELDED ATTACHMENT OF WIRE TO FERRULE SHALL DEVELOP THE TENSILE STRENGTH OF THE WIRE.

PROJECT NO. U-2707
FORSYTH COUNTY

STATION: 90+25.00 -L-

SHEET 2 OF 2 BRIDGE NO. 656



STATE OF NORTH CAROLINA DEPARTMENT OF TRANSPORTATION RALEIGH					
EXPANSION JOINT SEAL DETAILS FOR CONCRETE PARAPET RAIL					
REVISIONS					
NO.	BY:	DATE:	NO.	BY:	DATE:
1			3		
2			4		

SHEET NO. **S-29**
TOTAL SHEETS **86**

DRAWN BY: KHC DATE: 11/2015
CHECKED BY: JCM DATE: 11/2015

DOCUMENT NOT CONSIDERED
FINAL UNLESS ALL
SIGNATURES COMPLETED

1/12/2015

LEFT SIDE

RIGHT SIDE

PLAN OF EXPANSION JOINT SEAL

↑ FLOW OF TRAFFIC
↓ FLOW OF TRAFFIC

