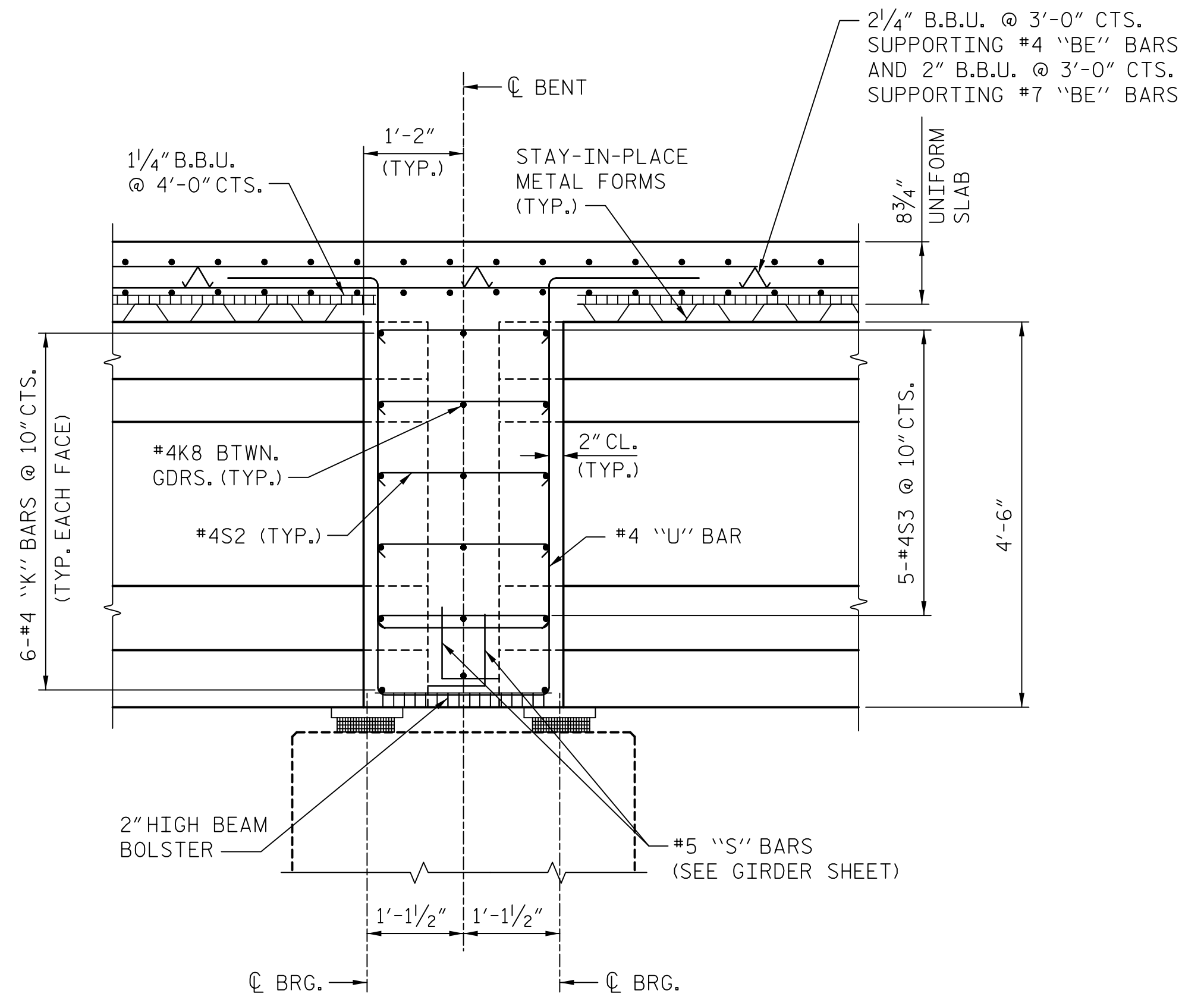
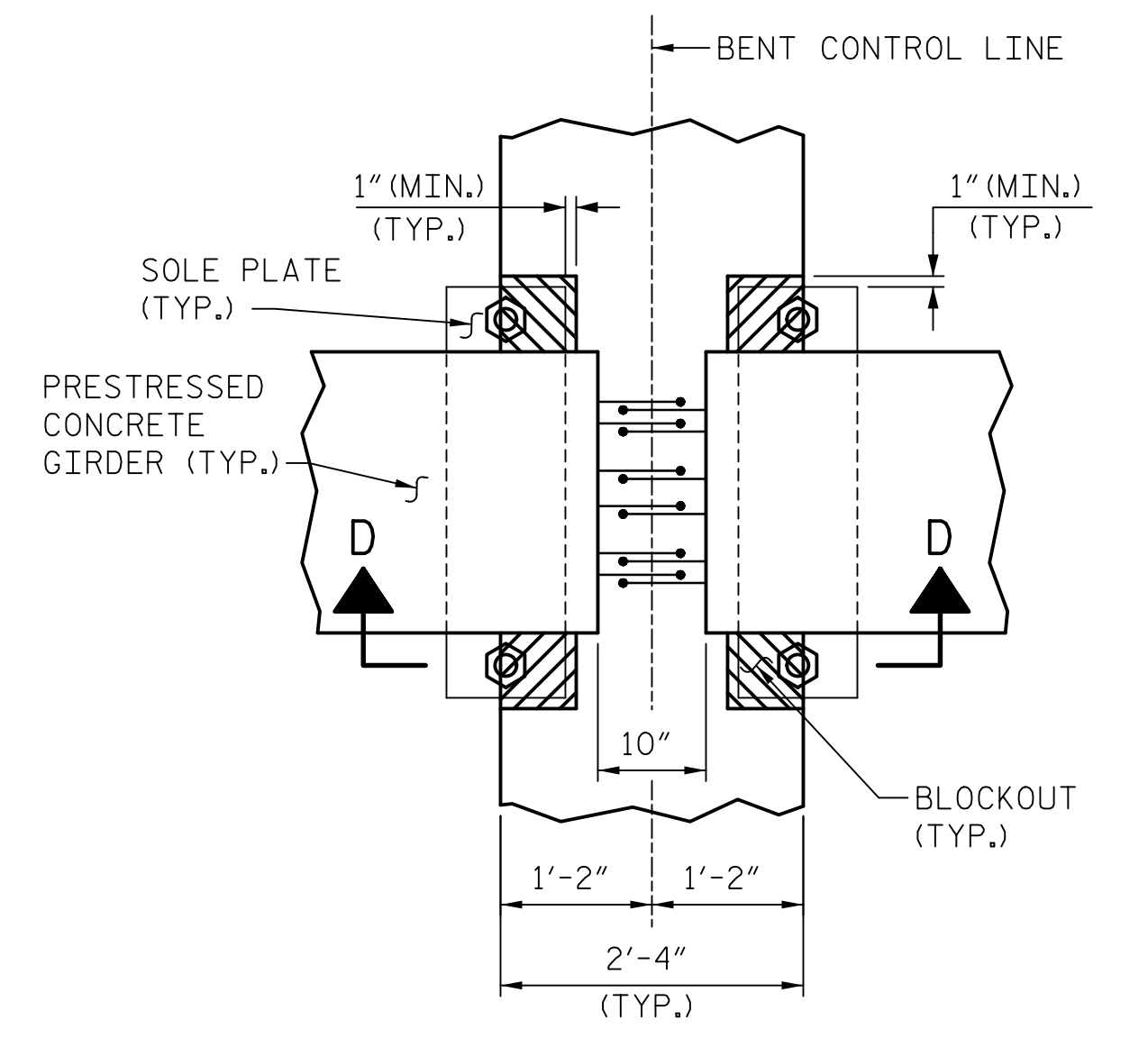


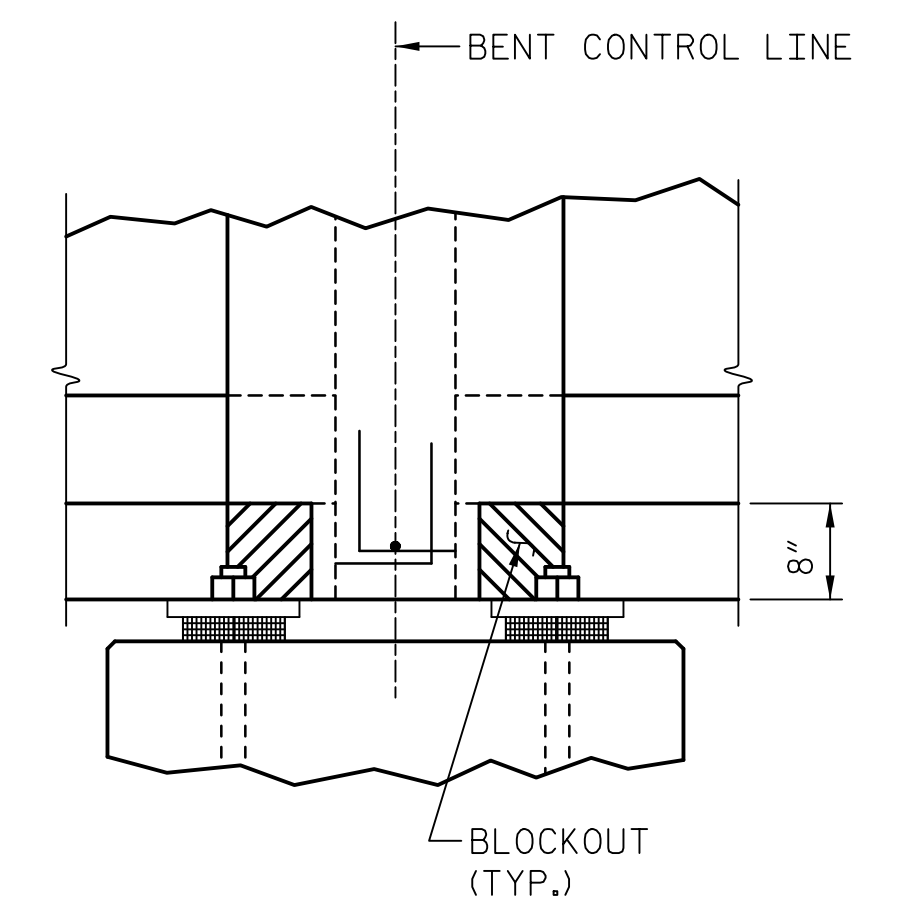
**SECTION THRU END BENT DIAPHRAGM**  
 \* #5G1E BAR MAY BE SHIFTED SLIGHTLY, AS NECESSARY, TO CLEAR REINFORCING STEEL AND STIRRUPS.



**SECTION THRU BENT DIAPHRAGMS**

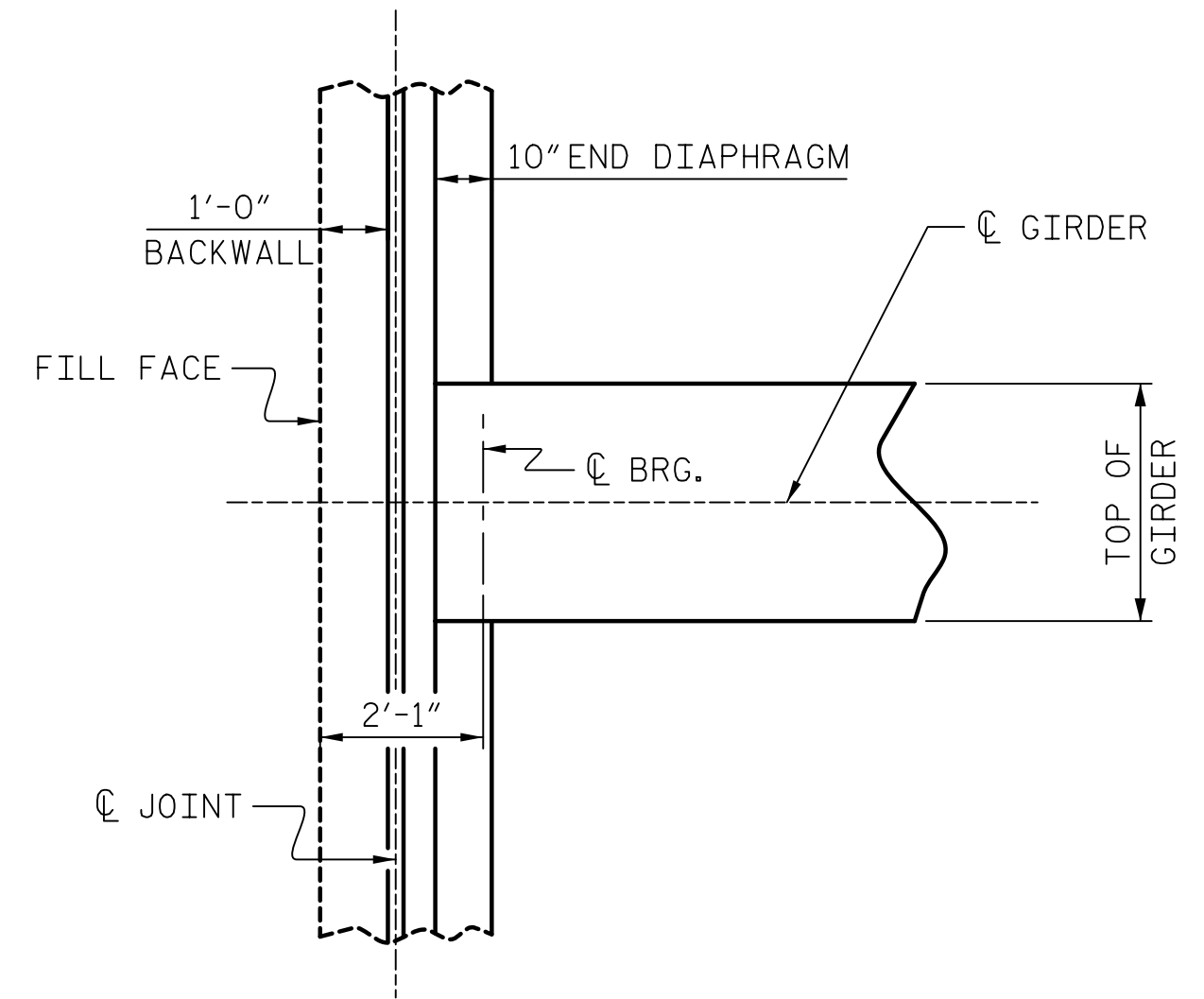


**PLAN VIEW**

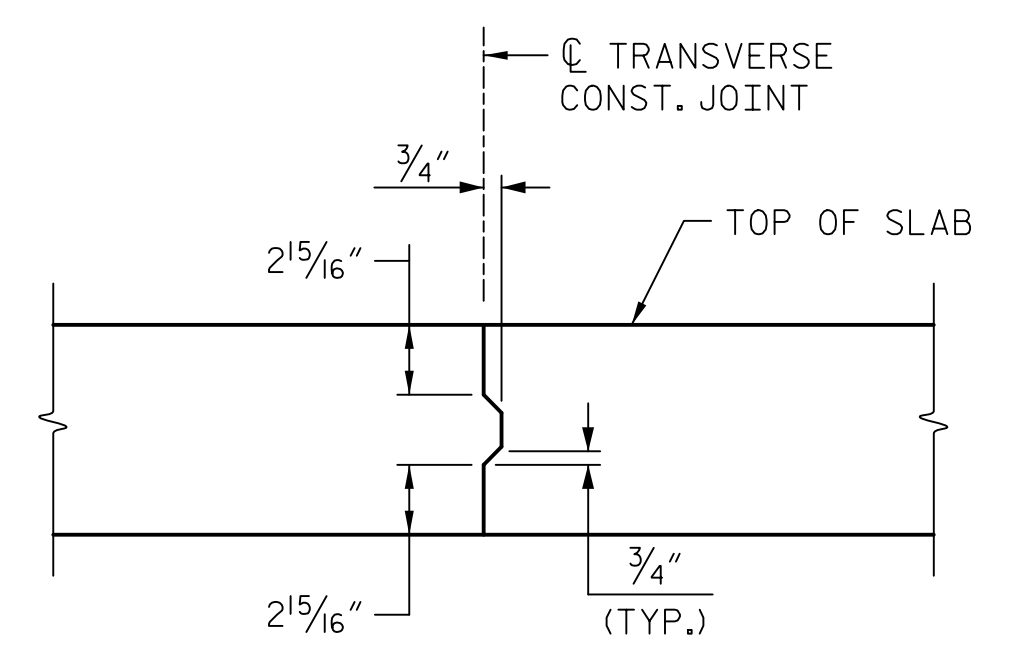


**SECTION "D-D"**

**BLOCKOUT DETAIL**  
 (BENT DIAPHRAGM FOR CONTINUOUS DECK SLAB AT INTERIOR BENTS)



**END BENT DIAPHRAGM**



**TRANSVERSE CONSTRUCTION JOINT DETAIL**

NOTES: REINFORCING STEEL IN SLAB NOT SHOWN.  
 LONGITUDINAL REINFORCING STEEL SHALL BE CONTINUOUS THRU JOINT.

PROJECT NO. U-2707  
FORSYTH COUNTY  
 STATION: 90+25.00 -L-  
 SHEET 2 OF 2 BRIDGE NO. 656

**AECOM**  
 AECOM TECHNICAL SERVICES, INC.  
 701 CORPORATE CENTER DRIVE, SUITE 475  
 RALEIGH, NC 27607  
 (919) 854-6200 www.aecom.com  
 AECOM License No. F-0342

SEAL  
 NORTH CAROLINA PROFESSIONAL ENGINEER  
 JOHN C. MORRIS  
 11/12/2016

STATE OF NORTH CAROLINA  
 DEPARTMENT OF TRANSPORTATION  
 RALEIGH

**SUPERSTRUCTURE TYPICAL SECTION AND DETAILS**

REVISIONS					
NO.	BY:	DATE:	NO.	BY:	DATE:

SHEET NO. **S-06**  
 TOTAL SHEETS **86**

DOCUMENT NOT CONSIDERED FINAL UNLESS ALL SIGNATURES COMPLETED

DATE: 11/12/2015 TIME: 9:54:42 AM  
 USER: A:\s\c\m\john.morris\p\dwg\656\656.dwg  
 DGN: A:\s\c\m\john.morris\p\dwg\656\656.dwg

DRAWN BY: MKT DATE: 11/2015  
 CHECKED BY: JCM DATE: 11/2015