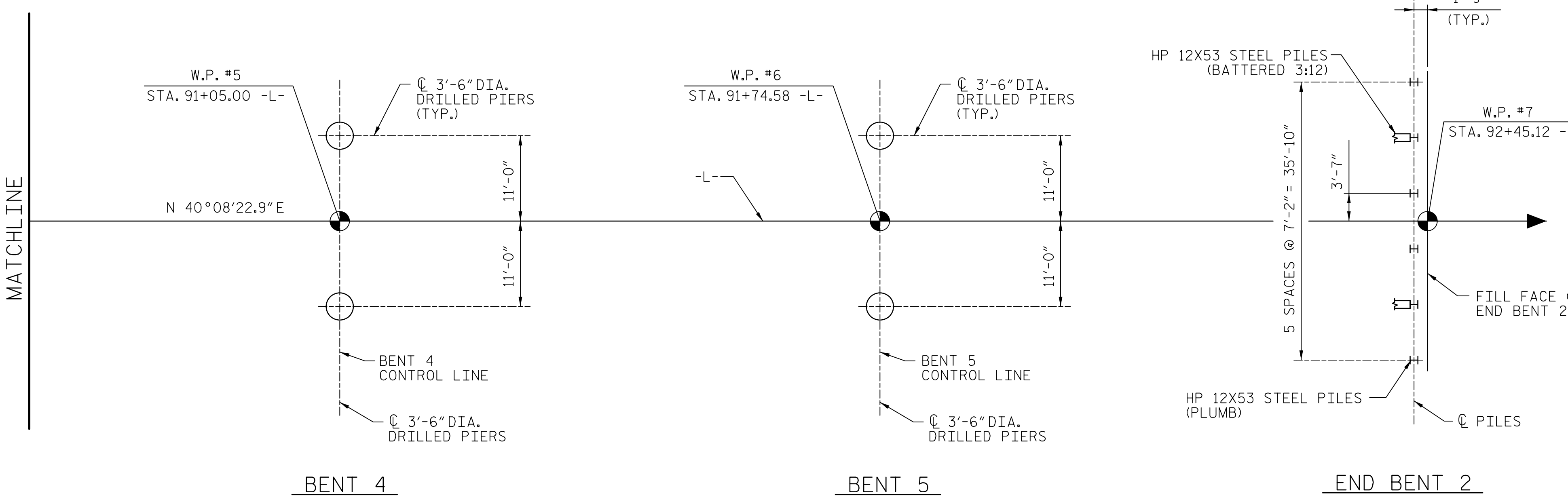


MATCHLINE

**NOTES:**

- FOR PILES, SEE PROJECT SPECIAL PROVISIONS AND SECTION 450 OF THE STANDARD SPECIFICATIONS.
- PILES AT END BENT 1 ARE DESIGNED FOR A FACTORED RESISTANCE OF 120 TONS PER PILE. DRIVE PILES AT END BENT 1 TO A REQUIRED DRIVING RESISTANCE OF 200 TONS PER PILE.
- PILES AT END BENT 2 ARE DESIGNED FOR A FACTORED RESISTANCE OF 105 TONS PER PILE. DRIVE PILES AT END BENT 2 TO A REQUIRED DRIVING RESISTANCE OF 175 TONS PER PILE.
- FOR DRILLED PIERS, SEE GEOTECHNICAL SPECIAL PROVISIONS AND SECTION 411 OF THE STANDARD SPECIFICATIONS.
- DRILLED PIERS AT BENT 1 ARE DESIGNED FOR A FACTORED RESISTANCE OF 420 TONS PER PIER. CHECK FIELD CONDITIONS FOR THE REQUIRED TIP RESISTANCE OF 25 TSF.
- INSTALL DRILLED PIERS AT BENT 1 THAT EXTEND TO AN ELEVATION NO HIGHER THAN 659 FT. (LEFT) AND 656 FT. (RIGHT) WITH THE REQUIRED TIP RESISTANCE.
- DRILLED PIERS AT BENT 2 ARE DESIGNED FOR A FACTORED RESISTANCE OF 430 TONS PER PIER. CHECK FIELD CONDITIONS FOR THE REQUIRED TIP RESISTANCE OF 40 TSF.
- INSTALL DRILLED PIERS AT BENT 2 THAT EXTEND TO AN ELEVATION NO HIGHER THAN 659.5 FT. (LEFT) AND 657.5 FT. (RIGHT) WITH THE REQUIRED TIP RESISTANCE.
- DRILLED PIERS AT BENT 3 ARE DESIGNED FOR A FACTORED RESISTANCE OF 490 TONS PER PIER. CHECK FIELD CONDITIONS FOR THE REQUIRED TIP RESISTANCE OF 40 TSF.
- INSTALL DRILLED PIERS AT BENT 3 THAT EXTEND TO AN ELEVATION NO HIGHER THAN 657 FT. (LEFT) AND 654 FT. (RIGHT) WITH THE REQUIRED TIP RESISTANCE.
- DRILLED PIERS AT BENT 4 ARE DESIGNED FOR A FACTORED RESISTANCE OF 450 TONS PER PIER. CHECK FIELD CONDITIONS FOR THE REQUIRED TIP RESISTANCE OF 95 TSF (LEFT) AND 25 TSF (RIGHT).
- INSTALL DRILLED PIERS AT BENT 4 THAT EXTEND TO AN ELEVATION NO HIGHER THAN 661 FT. (LEFT) AND 667 FT. (RIGHT) WITH THE REQUIRED TIP RESISTANCE.
- DRILLED PIERS AT BENT 5 ARE DESIGNED FOR A FACTORED RESISTANCE OF 400 TONS PER PIER. CHECK FIELD CONDITIONS FOR THE REQUIRED TIP RESISTANCE OF 40 TSF.
- INSTALL DRILLED PIERS AT BENT 5 THAT EXTEND TO AN ELEVATION NO HIGHER THAN 665 FT. (LEFT) AND 668 FT. (RIGHT) WITH THE REQUIRED TIP RESISTANCE.



MATCHLINE

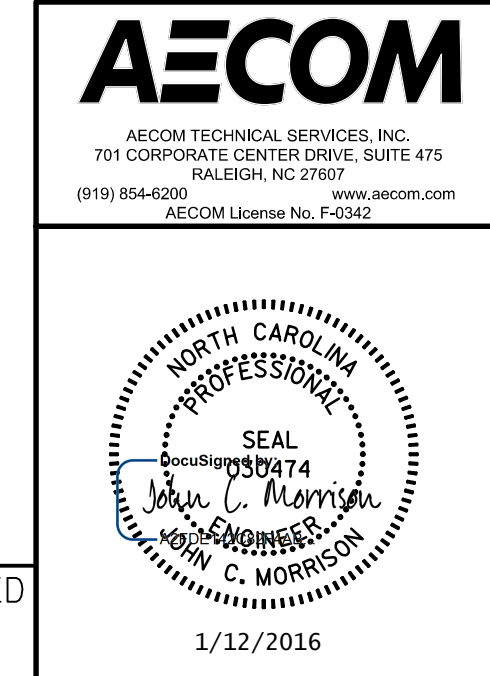
**FOUNDATION LAYOUT PLAN**

(DIMENSIONS LOCATING PILES ARE SHOWN TO THE PILE CENTERLINE)

**NOTES (CONT'D.):**

- PERMANENT STEEL CASINGS MAY BE REQUIRED FOR DRILLED PIERS AT BENT 3. IF REQUIRED, DO NOT EXTEND PERMANENT CASINGS BELOW ELEVATION 677 FT. WITHOUT PRIOR APPROVAL FROM THE ENGINEER. THE ENGINEER WILL DETERMINE THE NEED FOR PERMANENT CASINGS.
- PERMANENT STEEL CASINGS MAY BE REQUIRED FOR DRILLED PIERS AT BENT 4. IF REQUIRED, DO NOT EXTEND PERMANENT CASINGS BELOW ELEVATION 682 FT. WITHOUT PRIOR APPROVAL FROM THE ENGINEER. THE ENGINEER WILL DETERMINE THE NEED FOR PERMANENT CASINGS.
- THE SCOUR CRITICAL ELEVATION FOR BENTS 1, 2 AND 3 IS ELEVATION 670 FT. SCOUR CRITICAL ELEVATIONS ARE USED TO MONITOR POSSIBLE SCOUR PROBLEMS DURING THE LIFE OF THE STRUCTURE.
- THE SCOUR CRITICAL ELEVATION FOR BENT 4 IS ELEVATION 675 FT. SCOUR CRITICAL ELEVATIONS ARE USED TO MONITOR POSSIBLE SCOUR PROBLEMS DURING THE LIFE OF THE STRUCTURE.
- THE SCOUR CRITICAL ELEVATION FOR BENT 5 IS ELEVATION 680 FT. SCOUR CRITICAL ELEVATIONS ARE USED TO MONITOR POSSIBLE SCOUR PROBLEMS DURING THE LIFE OF THE STRUCTURE.
- SPT MAY BE REQUIRED FOR DRILLED PIERS. THE ENGINEER WILL DETERMINE THE NEED FOR SPT. FOR SPT TESTING, SEE SECTION 411 OF THE STANDARD SPECIFICATIONS.
- CSL TUBES ARE REQUIRED AND CSL TESTING MAY BE REQUIRED FOR DRILLED PIERS. THE ENGINEER WILL DETERMINE THE NEED FOR CSL TESTING. FOR CSL TESTING, SEE SECTION 411 OF THE STANDARD SPECIFICATIONS.
- SID INSPECTIONS MAY BE REQUIRED FOR DRILLED PIERS. THE ENGINEER WILL DETERMINE THE NEED FOR SID INSPECTIONS. FOR SID INSPECTIONS, SEE SECTION 411 OF THE STANDARD SPECIFICATIONS.

PROJECT NO. U-2707  
**FORSYTH COUNTY**  
 STATION: 90+25.00 -L-  
 SHEET 2 OF 3 BRIDGE NO. 656



STATE OF NORTH CAROLINA DEPARTMENT OF TRANSPORTATION RALEIGH					
GENERAL DRAWING					
BRIDGE ON SR 3000 (IDOLS ROAD) OVER MUDDY CREEK BETWEEN SR 2999 AND US 158					
REVISIONS				SHEET NO.	
NO.	BY:	DATE:	NO.	BY:	DATE:
1			3		
2			4		
					TOTAL SHEETS <b>86</b>

DRAWN BY : KHC DATE : 10/2015  
 CHECKED BY : JCM DATE : 10/2015

DOCUMENT NOT CONSIDERED  
 FINAL UNLESS ALL  
 SIGNATURES COMPLETED

DATE: 1/12/2016 TIME: 9:25:54 AM  
 USER: jcm.dwg DON: R:\Bridges\656\Card\40\_003\_U2707\_SML\_S02.dwg