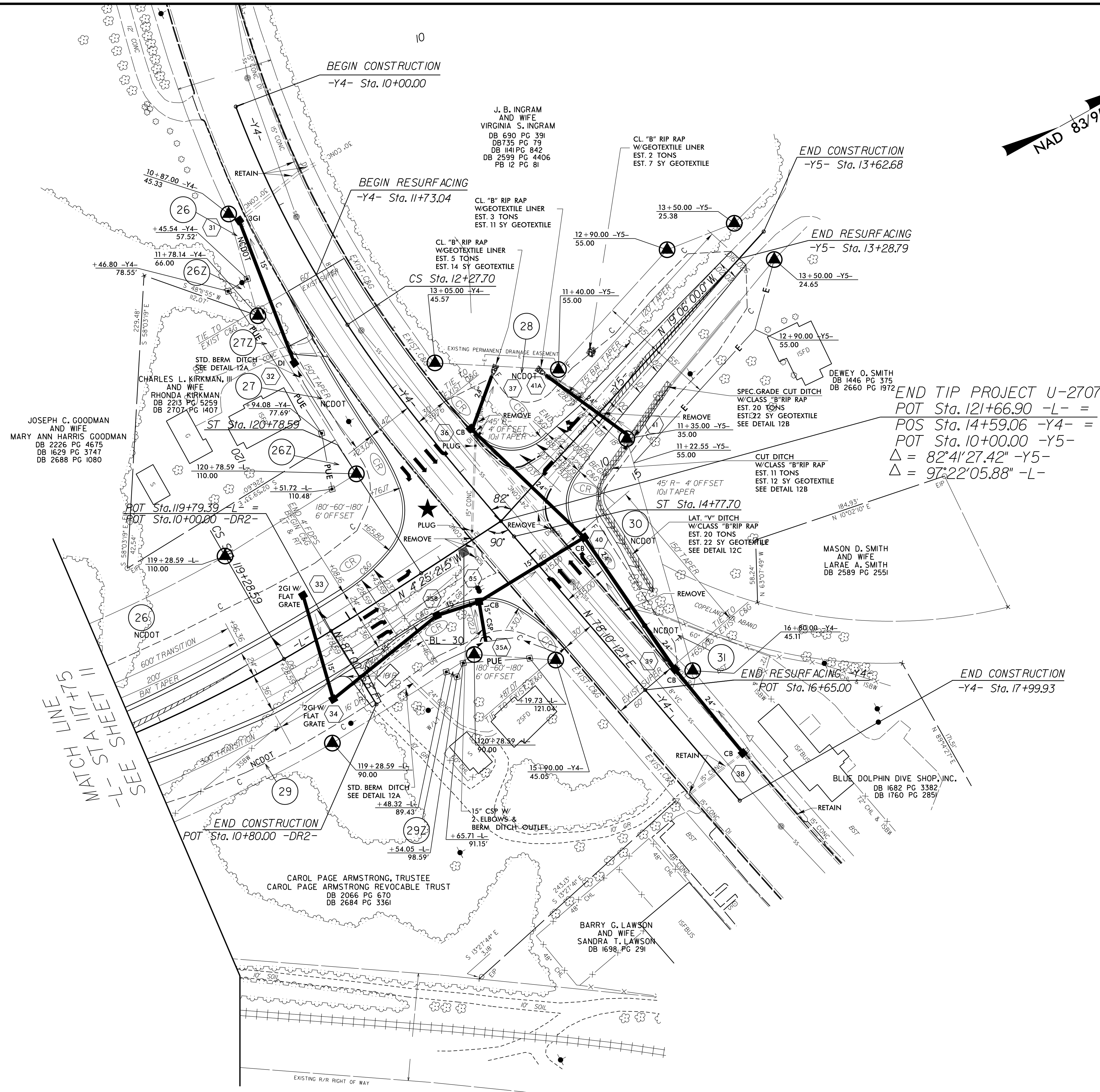
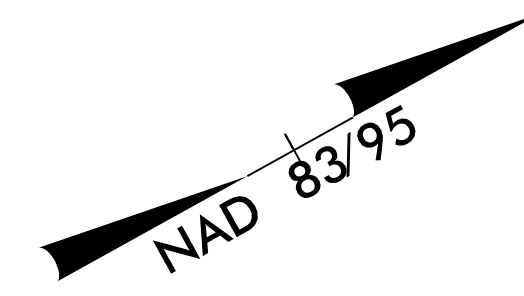


PROJECT REFERENCE NO. <i>U-2707</i>		SHEET NO. <i>12</i>	
RW SHEET NO.		HYDRAULICS ENGINEER	
ROADWAY DESIGN ENGINEER		3/8/2016	
3/9/2016		3/8/2016	
DOCUMENT NOT CONSIDERED FINAL UNLESS ALL SIGNATURES COMPLETED			

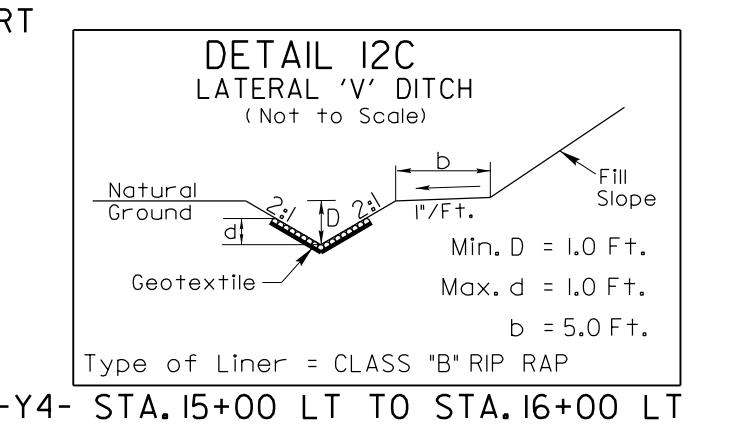
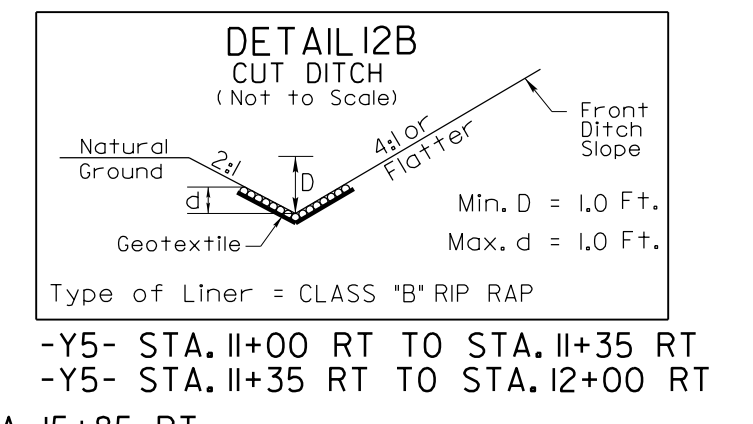
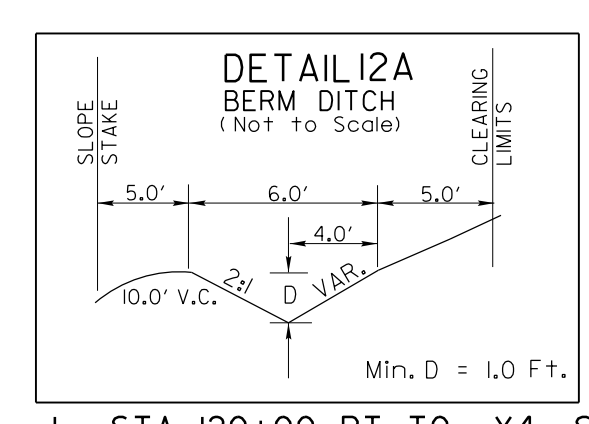
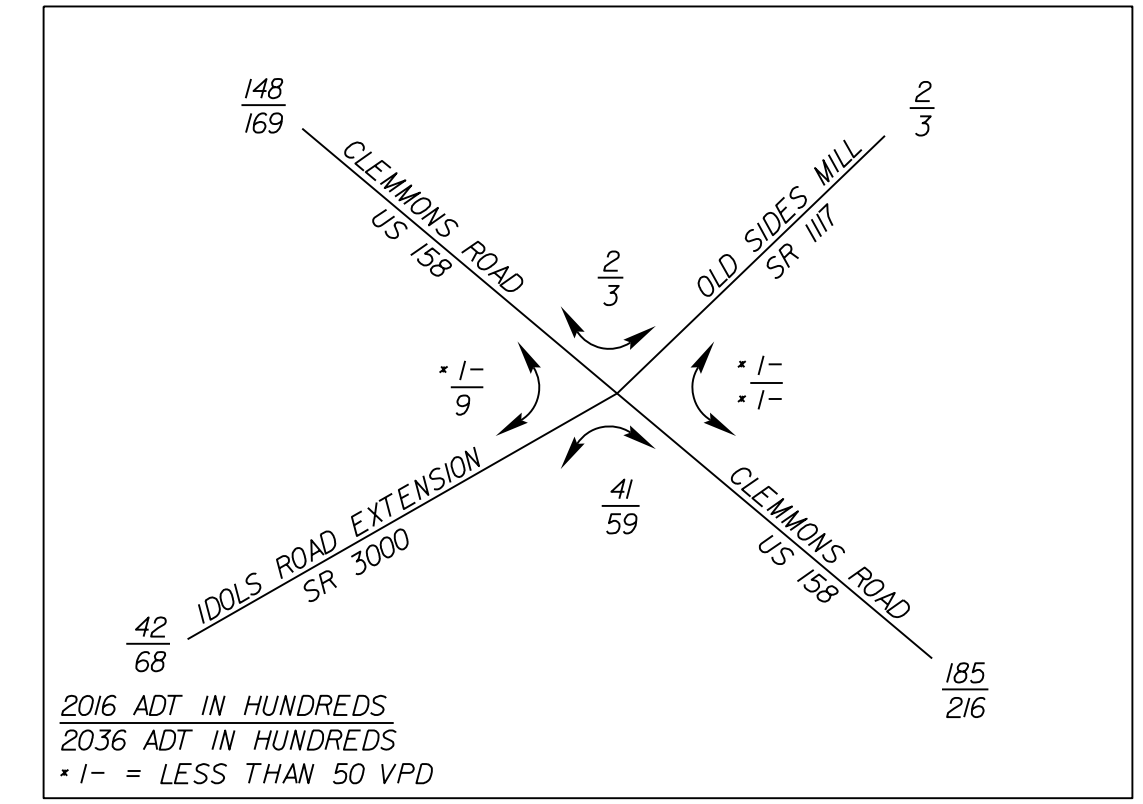


**-Y4-**

PI Sta 11+4.33      Pls Sta 13+11.5  
 $\Delta = 12^\circ 47' 26.0''$  (LT)       $\Theta_s = 7^\circ 01' 17.5''$   
 $D = 5^\circ 37' 02.0''$        $L_s = 250.00'$   
 $L = 227.70$        $LT = 166.80'$   
 $T = 114.33'$        $ST = 83.45'$   
 $R = 1,020.00'$        $SE = EXIST.$   
 $SE = EXIST.$

**-L-**

PI Sta 115+08.96      Pls Sta 119+78.60  
 $\Delta = 38^\circ 01' 36.1''$  (LT)       $\Theta_s = 3^\circ 16' 04.1''$   
 $D = 4^\circ 21' 25.5''$        $L_s = 150.00'$   
 $L = 872.75$        $LT = 100.02'$   
 $T = 453.13'$        $ST = 50.01'$   
 $R = 1,315.00'$   
 $SE = 0.06$



-L- STA. 120+00 RT TO -Y4- STA. 15+85 RT  
 -Y4- STA. 12+30 TO STA. 13+00 RT

-Y4- STA. 15+00 LT TO STA. 16+00 LT

JOSEPH C. GOODMAN AND WIFE  
 MARY ANN HARRIS GOODMAN  
 DB 2226 PG 4675  
 DB 1629 PG 3747  
 DB 2688 PG 1080

J. B. INGRAM AND WIFE  
 VIRGINIA S. INGRAM  
 DB 690 PG 391  
 DB 735 PG 79  
 DB 1141 PG 842  
 DB 2599 PG 4406  
 PB 12 PG 81

END TIP PROJECT U-2707  
 POT Sta. 121+66.90 -L- =  
 POS Sta. 14+59.06 -Y4- =  
 POT Sta. 10+00.00 -Y5-  
 $\Delta = 82^\circ 41' 27.42''$  -Y5-  
 $\Delta = 97^\circ 22' 05.88''$  -L-

MASON D. SMITH AND WIFE  
 LARAE A. SMITH  
 DB 2589 PG 2551

BLUE DOLPHIN DIVE SHOP, INC.  
 DB 1682 PG 3382  
 DB 1760 PG 2851

CAROL PAGE ARMSTRONG, TRUSTEE  
 CAROL PAGE ARMSTRONG REVOCABLE TRUST  
 DB 2066 PG 670  
 DB 2684 PG 3361

BARRY G. LAWSON AND WIFE  
 SANDRA T. LAWSON  
 DB 1698 PG 291

MATCH LINE  
 STA 117+75  
 -L- SEE SHEET 11

★ = PROPOSED TRAFFIC SIGNAL

SEE SHEET 18 FOR -L- GRADE  
 SEE SHEET 19 FOR -Y4- GRADE  
 SEE SHEET 19 FOR -Y5- GRADE

REVISIONS

3/8/2016 U2707\_Pdy\_psh\_12.dgn  
 11:51:00 am