

8/17/99

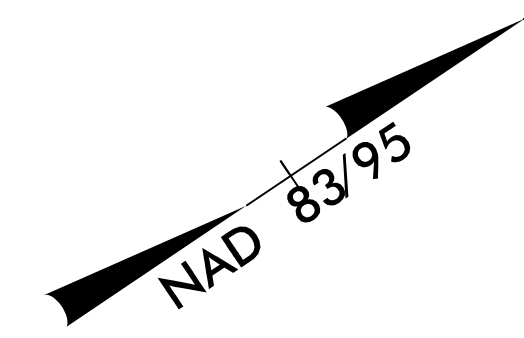
SEPI
ENGINEERING & CONSTRUCTION
1025 Wade Avenue
Raleigh, NC 27605
Tel: 919-789-9977
Fax: 919-789-9591
License: C-2197

MULKEY
ENGINEERS & CONSULTANTS
PO Box 33127
Raleigh, N.C. 27636
(919) 851-1912
(919) 851-1918 (FAX)
WWW.MULKEYINC.COM

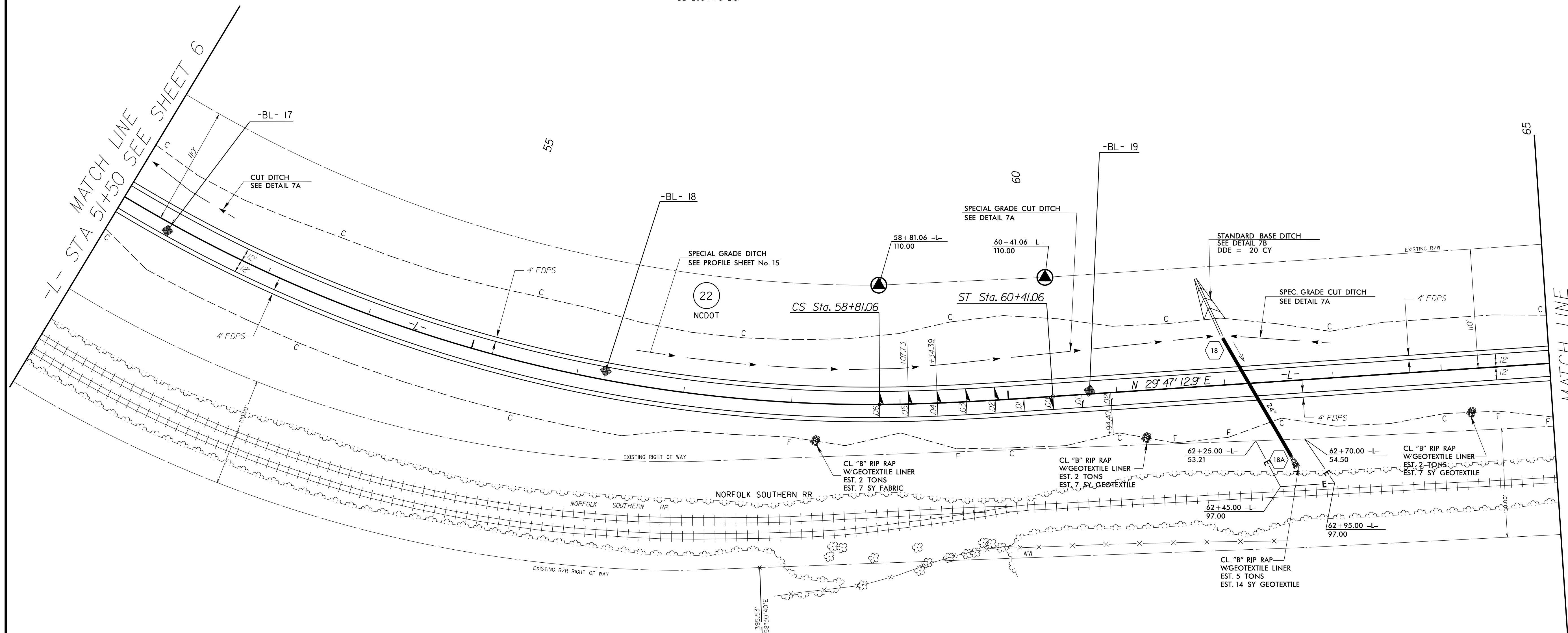
PROJECT REFERENCE NO. U-2707	SHEET NO. 7
RW SHEET NO.	
ROADWAY DESIGN ENGINEER 2/10/2016 SEAL 22568 David S. Smith	HYDRAULICS ENGINEER 2/11/2016 SEAL 29984 David P. Bocker

DOCUMENT NOT CONSIDERED FINAL UNLESS ALL SIGNATURES COMPLETED

EDNA W. BINGHAM HEIRS
DB 786 PG 441
DB 2684 PG 2181



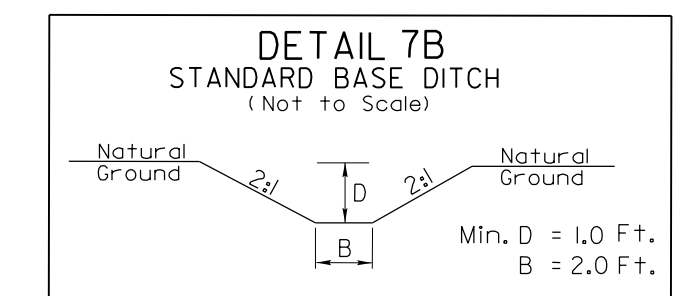
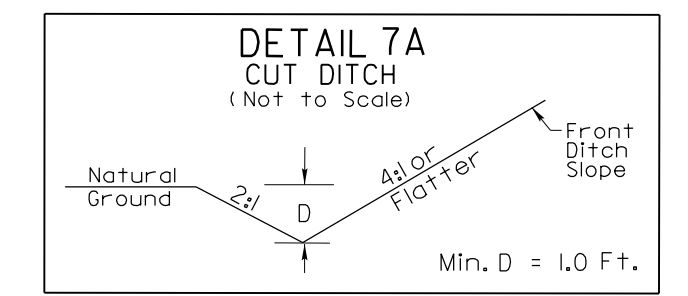
REVISIONS



HUBBARD REALTY & MCGUIRE CONSTRUCTION
DB 1641 PG 1137

-L-
 PI Sta 53+94.10 PIs Sta 59+34.41
 $\Delta = 44' 18'' 15.0''$ (LT) $\Theta s = 3' 26' 46.9''$
 $D = 4' 18' 28.6''$ $Ls = 160.00'$
 $L = 1,028.43'$ $LT = 106.69'$
 $T = 541.47'$ $ST = 53.35'$
 $R = 1,330.00'$
 $SE = 0.06$
 $RUNOFF = 160'$

23
KEITH HAROLD HASTINGS
PATRICK OMAR DODSON
DB 1448 PG 773
DB 2128 PG 4653
DB 2179 PG 2174



-L- STA. 51+50 TO -L- STA. 52+50 LT
 -L- STA. 59+50 TO -L- STA. 62+00 LT
 -L- STA. 62+00 TO -L- STA. 63+00 LT

-L- STA. 61+85 LT

SEE SHEET 15 FOR -L- GRADE

1/28/2016 10:27:07_Pduj_psh_07.dgn