

PROJECT REFERENCE NO. U-2707	SHEET NO. 4
RW SHEET NO.	
ROADWAY DESIGN ENGINEER SEAL 22568	HYDRAULICS ENGINEER SEAL 29984
2/10/2016 NORTH CAROLINA PROFESSIONAL ENGINEER SOCIETY David P. Boeker	2/11/2016 NORTH CAROLINA PROFESSIONAL ENGINEER SOCIETY David P. Boeker

1025 Wade Avenue
Raleigh, NC 27605
Tel: 919-789-9977
Fax: 919-789-9591
License: C-2197

SSEPI
ENGINEERING & CONSTRUCTION

MULKEY
ENGINEERS & CONSULTANTS

PO BOX 33127
Raleigh, NC 27636
(919) 851-1912 (FAX)
(919) 851-1918 (TEL)
WWW.MULKEYINC.COM

CHARLES HARRIS AND WIFE
ANN HARRIS
DB 2563 PG 2100
DB 2647 PG 95
PB 52 PG 20

FRANCIS A. MILLER
DB 1941 PG 1838
PB 37 PG 137

LARRY W. MILLER
DB 1941 PG 1872
DB 2660 PG 1432
PB 37 PG 137

JAMES L. LINDSEY, JR.
DB 1931 PG 2242
DB 2637 PG 1531
PB 37 PG 137

PAULINE BARBER PRATT
DB 1977 PG 1902
2598 PG 4000
PB 87 PG 137

BETTY W. RHILLIPS
DB 1931 PG 2242
DB 2637 PG 1531
PB 37 PG 137

GUY THOMAS TOTTEROW, III
DB 2022 PG 129
PB 37 PG 157

TORIN TORGERSEN AND WIFE
JANICE TORGERSEN
DB 2730 PG 42
DB 2669 PG 874
DB 269 PG 876
PB 31 PG 45

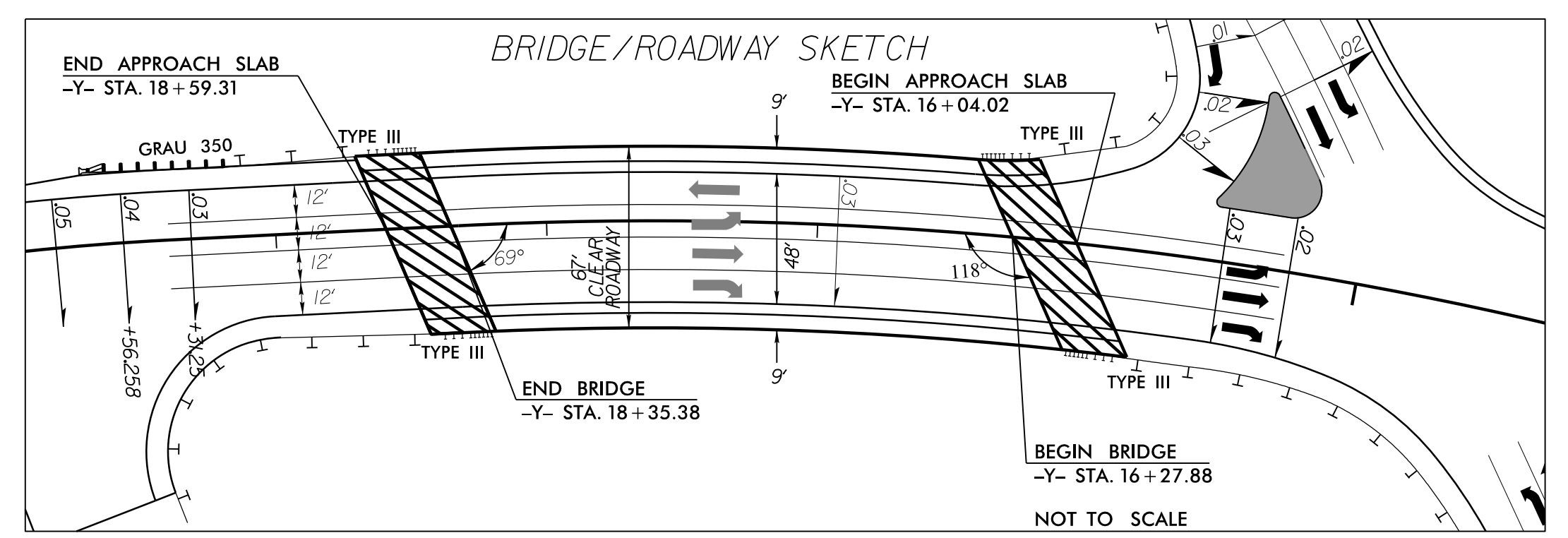
RICHARD R. MAYS
DB 2606 PG 1123
PB 31 PG 45

SHANE OLIVER AND WIFE
LAURA OLIVER
DB 313 PG 597
PB 31 PG 45

JAMES L. SMITH AND WIFE
JEAN T. SMITH
DB 2162 PG 2289

STEPHEN MARCUS SHELTON
DB 2948 PG 414
DB 2925 PG 4061

TRUMPH ACTUATION SYSTEMS, LLC
DB 1987 PG 2388
DB 2388 PG 2029
DB 2794 PG 3848



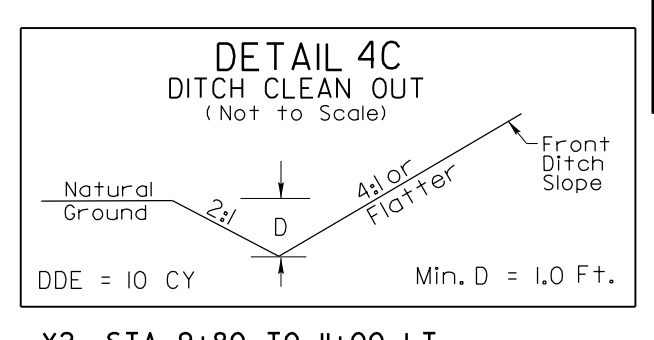
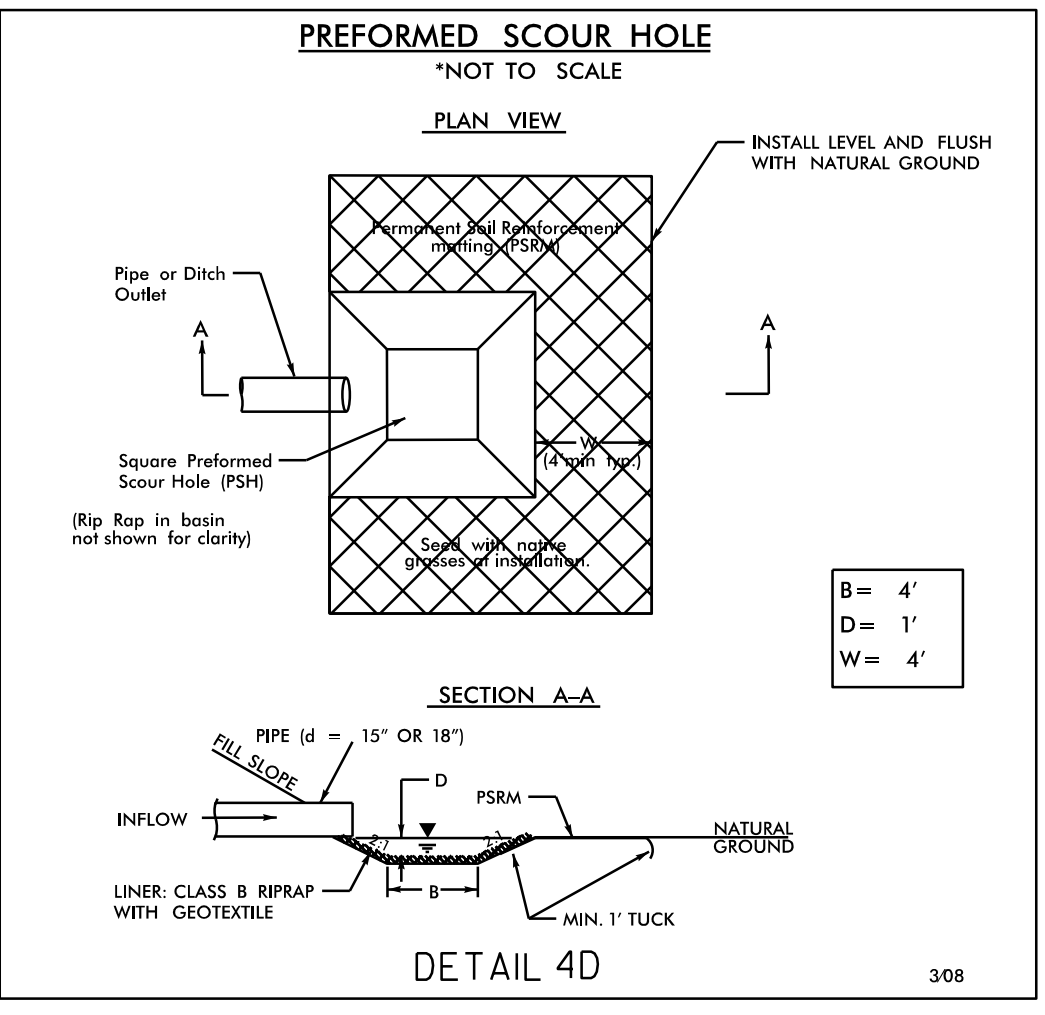
PI Sta 13+25.43
 $\Delta = 16' 26'' 34.70''$ (LT)
 $D = 4' 46'' 28.73''$
 $L = 344.38'$
 $T = 173.38'$
 $R = 1,200.00'$
 $SE = 0.06$
 RUNOFF = 150'

PIs Sta 15+46.45
 $\Theta s = 3' 34'' 51.6''$
 $Ls = 150.00'$
 $LT = 100.02'$
 $ST = 50.02'$

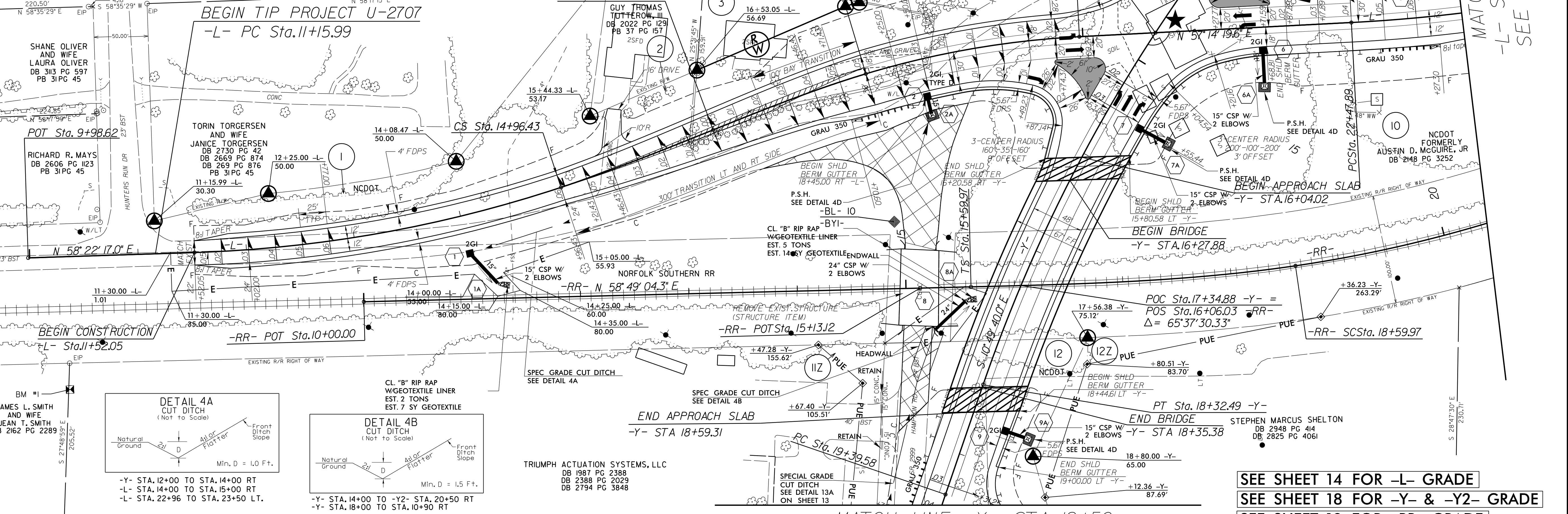
PIs Sta 17+46.47
 $\Theta s = 5' 08'' 46.8''$
 $Ls = 150.00'$
 $LT = 100.04'$
 $ST = 50.04'$

PI Sta 18+97.07
 $\Delta = 13' 44'' 42.1''$ (RT)
 $D = 6' 51'' 42.4''$
 $L = 200.31'$
 $T = 100.64'$
 $R = 835.00'$
 $SE = 0.06$
 RUNOFF = 150'

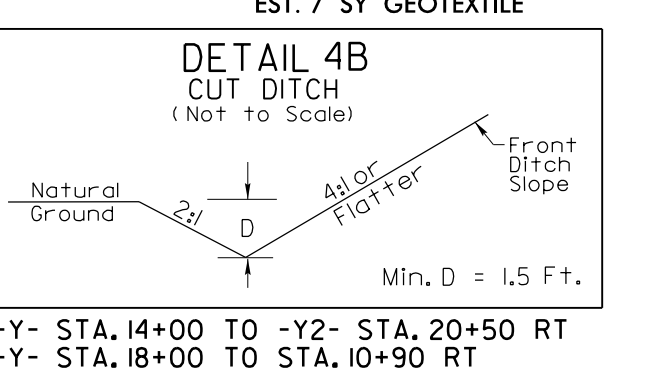
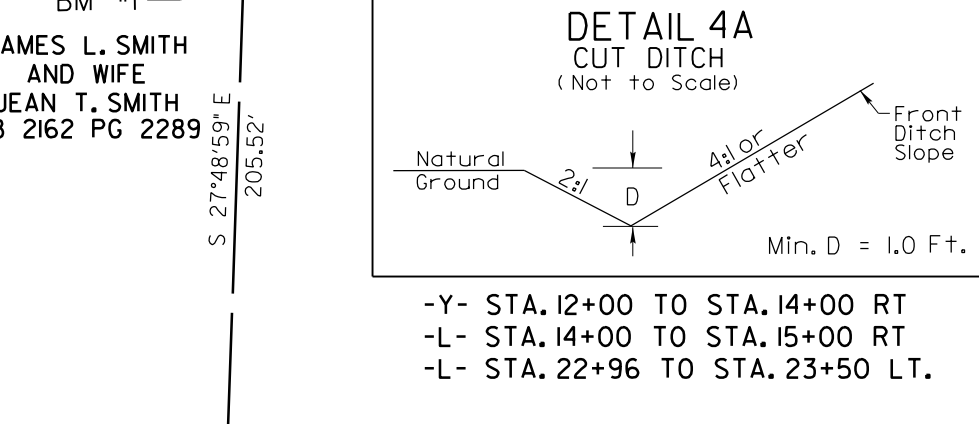
PI Sta 24+47.09
 $\Delta = 15' 07'' 44.9''$ (LT)
 $D = 3' 49'' 11.0''$
 $L = 396.08'$
 $T = 199.20'$
 $R = 1,500.00'$
 $SE = 0.06$
 RUNOFF = 150'



PI Sta 15+84.89
 $\Delta = 19' 45'' 58.9''$ (LT)
 $D = 3' 57'' 05.2''$
 $L = 500.23'$
 $T = 252.63'$
 $R = 1,450.00'$
 $SE = 0.03$
 RUNOFF = see plans



- (2) NCDOT
- (3) AVA KATRINA ROBERSON (WIDOW)
DB 1511 PG 646
DB 1887 PG 3848
PB 37 PG 137
- (4) NCDOT
- (5) NCDOT
- (6) NCDOT
- (7) NCDOT
- (8) NCDOT
- (9) NCDOT



★ = PROPOSED TRAFFIC SIGNAL

REVISIONS
 2/19/2016 U-2707_Rdwy_psh_04.dgn
 8/17/99