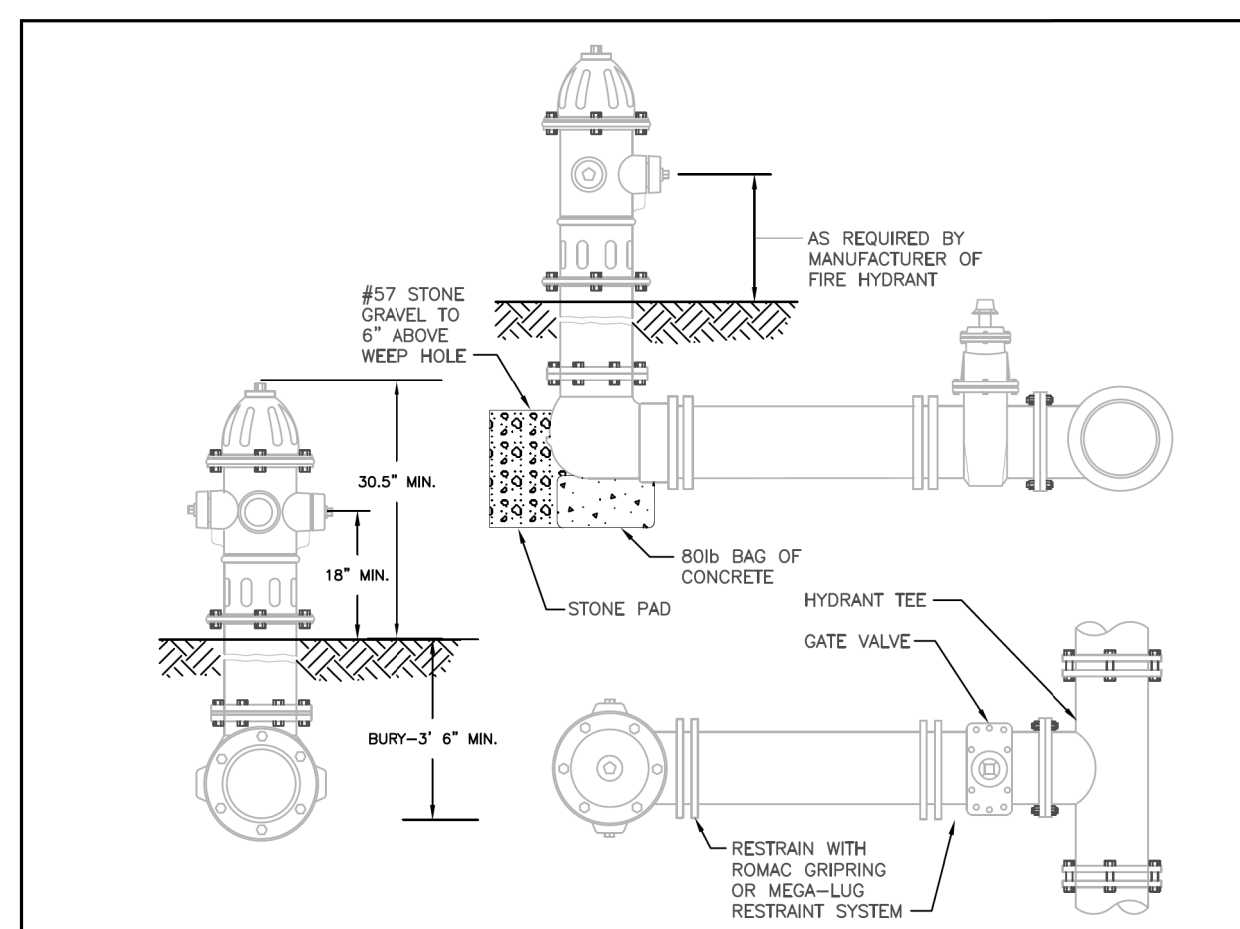


5/14/99

PROJECT REFERENCE NO.	SHEET NO.
B-5123	UC-3A
DESIGNED BY: BCH	
DRAWN BY: BCH	
CHECKED BY: JLT	
APPROVED BY: MRB	
REVISED:	
NORTH CAROLINA DEPARTMENT OF TRANSPORTATION UTILITIES ENGINEERING SEC. PHONE: (919) 707-6690 FAX: (919) 250-4151 TGS ENGINEERS 804-C N. LAFAYETTE ST. SHELBY, NC 28150 PH (704) 476-0003 CORP. LICENSE NO.: C-0275	



GENERAL NOTES:

- HYDRANTS SHALL BE MUELLER COMPANY - MODEL SUPER CENTURION 250, AMERICAN FLOW CONTROL - MODEL 5K" B-84-B, CLOW VALVE COMPANY - MODEL MEDALLION, OR EQUAL WITH BLACK PRIMER FINISH.
- HYDRANT SHALL HAVE INTEGRAL SNAP-TIGHT STYLE STORZ CONNECTION WITH 5/4" VALVE OPENING, OPEN LEFT, 1/2" PENTAGON NUTS, TWO-2 3/4" NST CONNECTIONS, ONE-8" STORZ CONNECTION, DRAIN HOLES OPEN, AND 6" MJ SHOE.
- MINIMUM BURY DEPTH OF 3'-6"
- ALL HYDRANTS SHALL STAND PLUMB. HYDRANTS WITH PUMPER NOZZLES SHALL HAVE HOSE NOZZLES PARALLEL WITH AND THE PUMPER NOZZLE PERPENDICULAR TO THE CURB LINE. ALL HYDRANTS SHALL BE ORIENTED SO THAT THE PUMPER NOZZLE FACES THE CURB OR AS DIRECTED BY THE CITY.
- HYDRANT SHALL BE LOCATED AT LEAST 3' BEHIND THE CURB AND LESS THAN 10' FROM THE EDGE OF THE ROAD PAVEMENT OR AS DIRECTED BY THE CITY.
- ALL OTHER MATERIALS AND INSTALLATION MUST CONFORM WITH THE TECHNICAL STANDARDS OF WSACC AND CITY OF CONCORD.

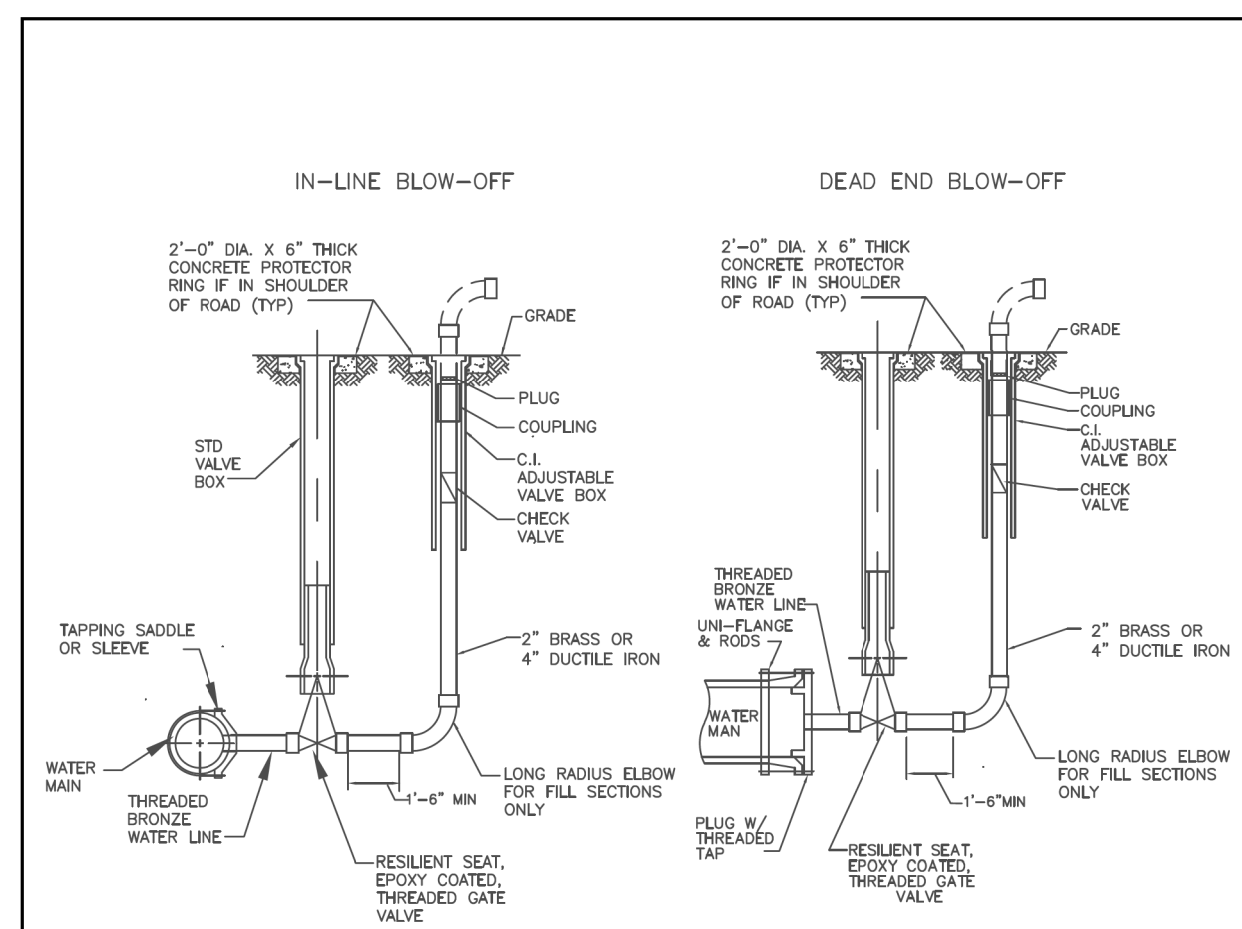
FIRE HYDRANT PAINT COLOR CODE REQUIREMENTS:

ALL NEW FIRE HYDRANTS INSTALLED IN THE CITY OF CONCORD SHALL BE PAINTED IN ACCORDANCE WITH THE FOLLOWING COLORS:

- HYDRANTS ON PUBLIC WATER MAINS SHALL BE PAINTED SAFETY YELLOW, SHERWIN WILLIAMS STEEL MASTER 9500 B56-300 SERIES LRV 30% OR EQUAL.
- PRIVATE HYDRANTS ON PRIVATE WATER MAINS SHALL BE PAINTED SAFETY RED, SHERWIN WILLIAMS SW4081 LVR 11% OR EQUAL.

FOR ALL FIELD PAINTING, ALL SURFACES SHALL BE SANDBLASTED AND PROPERLY PREPARED ACCORDING TO THE PAINT MANUFACTURER'S RECOMMENDATION PRIOR TO PAINTING. ALL FIRE HYDRANTS AND ANY PORTIONS OF THE HYDRANT ASSEMBLY EXPOSED TO VIEW (ABOVE ADJACENT GROUND ELEVATION) SHALL BE PAINTED WITH TWO (2) OR MORE EVENLY APPLIED COATS OF HYDRANT ENAMEL PAINT. HYDRANTS WILL BE RETOUCHED / REPAINTED AS NECESSARY AFTER INSTALLATION AND PRIOR TO ACCEPTANCE.

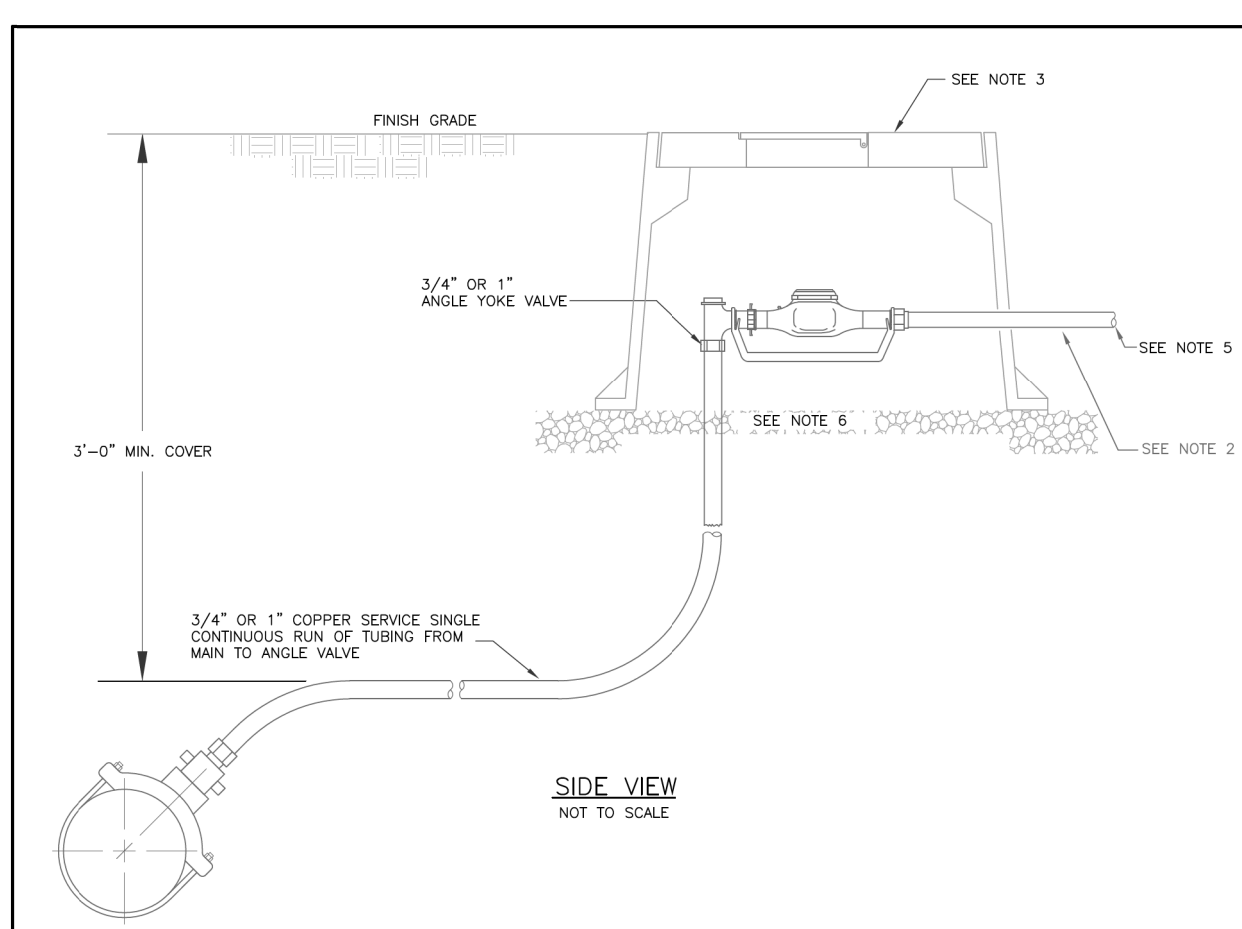
CITY OF CONCORD STANDARD DETAIL				
FIRE HYDRANT				
No.	Date	By	REVISION	
2	6/9/10	MSH	PUBLIC HYDRANT COLOR REVISION	
1	8/31/10	MSH	PRIVATE HYDRANT COLOR REVISION	
Drawn By:	Checked By:	Approved By:	Date	Shit of
SVM	MSH		09/08	



GENERAL NOTES:

- INSTALL 2" BLOW-OFF ON 2" THRU 18" MAINS.
- INSTALL 4" BLOW-OFF ON 20" OR LARGER MAIN.
- IF THE SEPARATION BETWEEN THE CONTROL VALVE AND THE BLOW-OFF DOES NOT ALLOW THE INSTALLATION OF THE CONCRETE PROTECTOR RINGS, A 24" BY 24" BY 6" THICK CONCRETE PAD SHALL BE FORMED AND POURED AROUND THE VALVE BOX. THE EDGE OF THE VALVE BOX RIM MUST BE AT LEAST 8" FROM THE EDGE OF THE CONCRETE PAD.

CITY OF CONCORD STANDARD DETAIL				
BLOW-OFF ASSEMBLY				
No.	Date	By	REVISION	
1	03/10	MSH		
Drawn By:	Checked By:	Approved By:	Date	Shit of
SVM	PLK	MSH	03/10	



GENERAL NOTES:

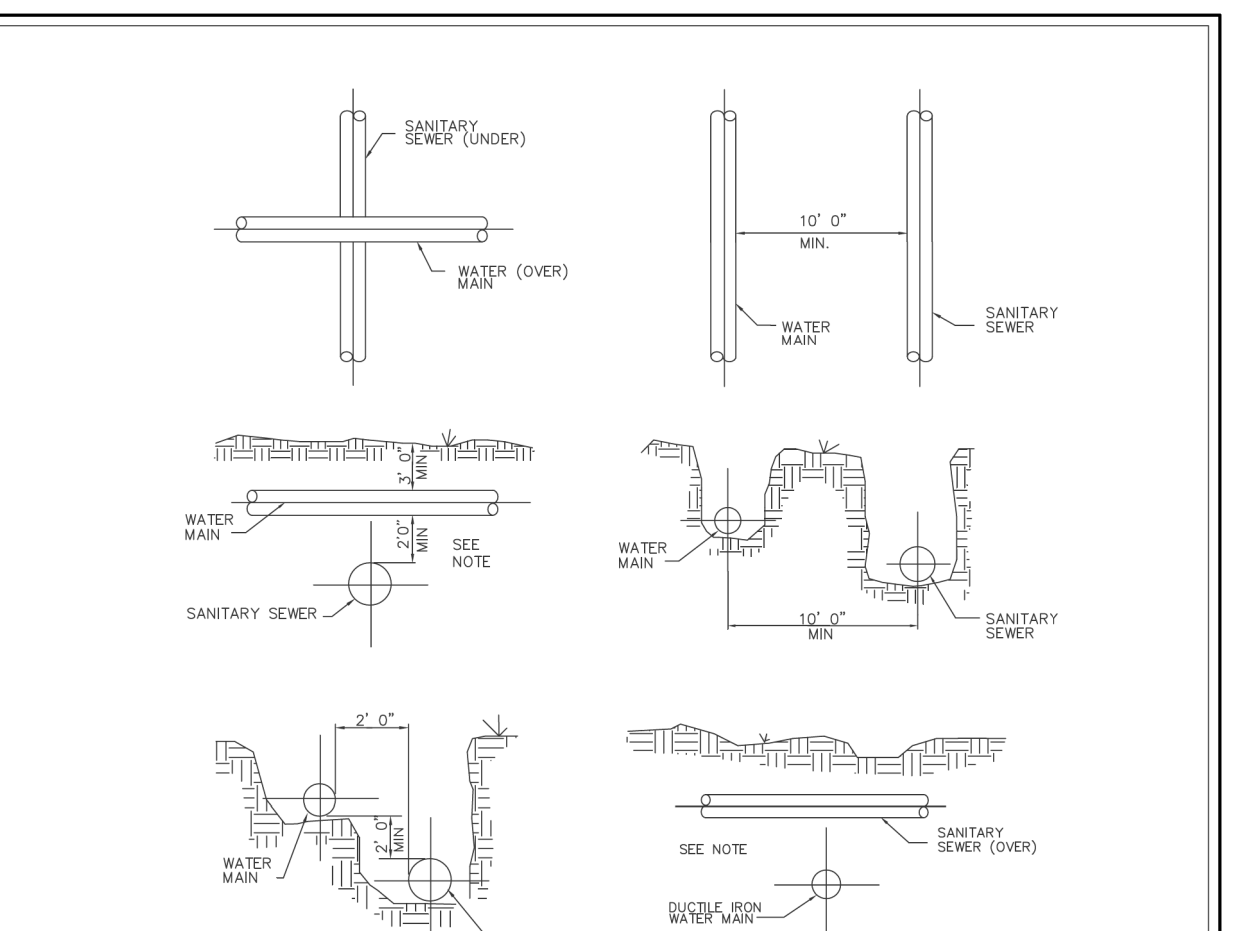
- REFER TO THE CITY OF CONCORD SPECIFICATIONS FOR ACCEPTABLE MANUFACTURES OF MATERIALS.
- PROVIDE 12" BRASS NIPPLE PAST BOX.
- METER BOXES SHALL BE PLASTIC BODY AND LID. THE METER HOUSING SHALL BE MID STATE PLASTICS OR EQUAL. 3/4-INCH BOX MSBCF - 1118-12XL AND LID MSCBC-1118- RTR; AND 1-INCH BOX MSBCF - 1324-12XL AND LID MSCBC-1324- RTR. METER BOX RIM SHALL BE SET FLUSH WITH FINAL GRADE. THE WATER METER BOX ASSEMBLY SHALL NOT BE LOCATED WITHIN A ROAD, STREET, DRIVEWAY, SIDEWALK OR DRAINAGE FEATURE.
- ALL APPURTENANCES FOR THE INSTALLATION OF THE WATER METER; THE METER, BRASS GROUND LOCKABLE METER CUTOFF, GASKETS, AND EXPANSION CONNECTION; SHALL BE INSTALLED BY THE CITY OF CONCORD, IF CONNECTION IS TO AN EXISTING MAIN.
- REQUIRED BACKFLOW PREVENTION ASSEMBLY IN ACCORDANCE WITH THE CITY OF CONCORD CROSS-CONNECTION CONTROL ORDINANCE.
- THE BASE OF THE METER BOX MUST HAVE AT LEAST 6-INCHES TO 8-INCHES OF #57 WASHED STONE.

GENERAL LOCATION REQUIREMENT:

N.T.S.

METER LOCATION TO BE IN COMPLIANCE WITH THE APPROVED ORDINANCE & CITY OF CONCORD ORDINANCE.

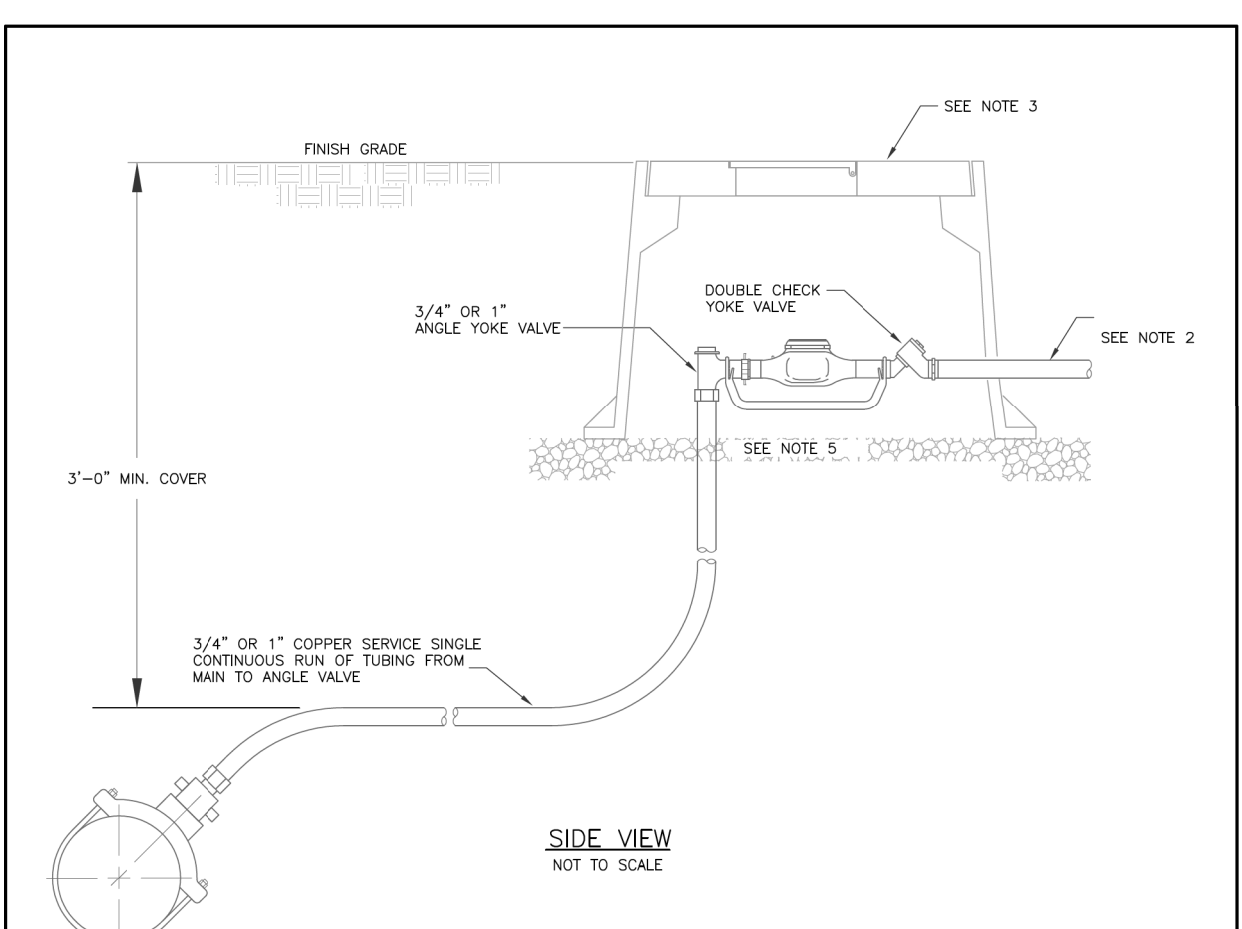
CITY OF CONCORD STANDARD DETAIL				
WATER METER STANDARD DETAIL				
3/4-INCH AND 1-INCH IRRIGATION OR COMMERCIAL WATER SERVICE METER				
No.	Date	By	REVISION	
1	9/7/07	JEC	CONTINUOUS PIPE & CONNECTION, SWM	
Drawn By:	Checked By:	Approved By:	Date	Shit of
SVM	PLK	MSH	02/05	



NOTE:

WHEN THE WATER MAIN IS ABOVE THE SANITARY SEWER, BUT WITH LESS THAN 24" CLEARANCE, OR WHEN THE SANITARY SEWER IS ABOVE THE WATER MAIN, BOTH THE WATER MAIN AND THE SANITARY SEWER LINE SHALL BE CONSTRUCTED OF DUCTILE IRON PIPE WITH JOINTS EQUIVALENT TO WATER MAIN STANDARDS FOR A MINIMUM LATERAL DISTANCE, MEASURED AT RIGHT ANGLES TO THE SEWER, OF 10 FEET ON EACH SIDE OF THE CROSSING.

CITY OF CONCORD STANDARD DETAIL				
RELATION OF WATER MAINS TO SANITARY SEWER MAINS				
No.	Date	By	REVISION	
1	12/28/05	JEC	REVISED FROM WSACC	
Drawn By:	Checked By:	Approved By:	Date	Shit of
JEC	PLK	MSH	10/07	



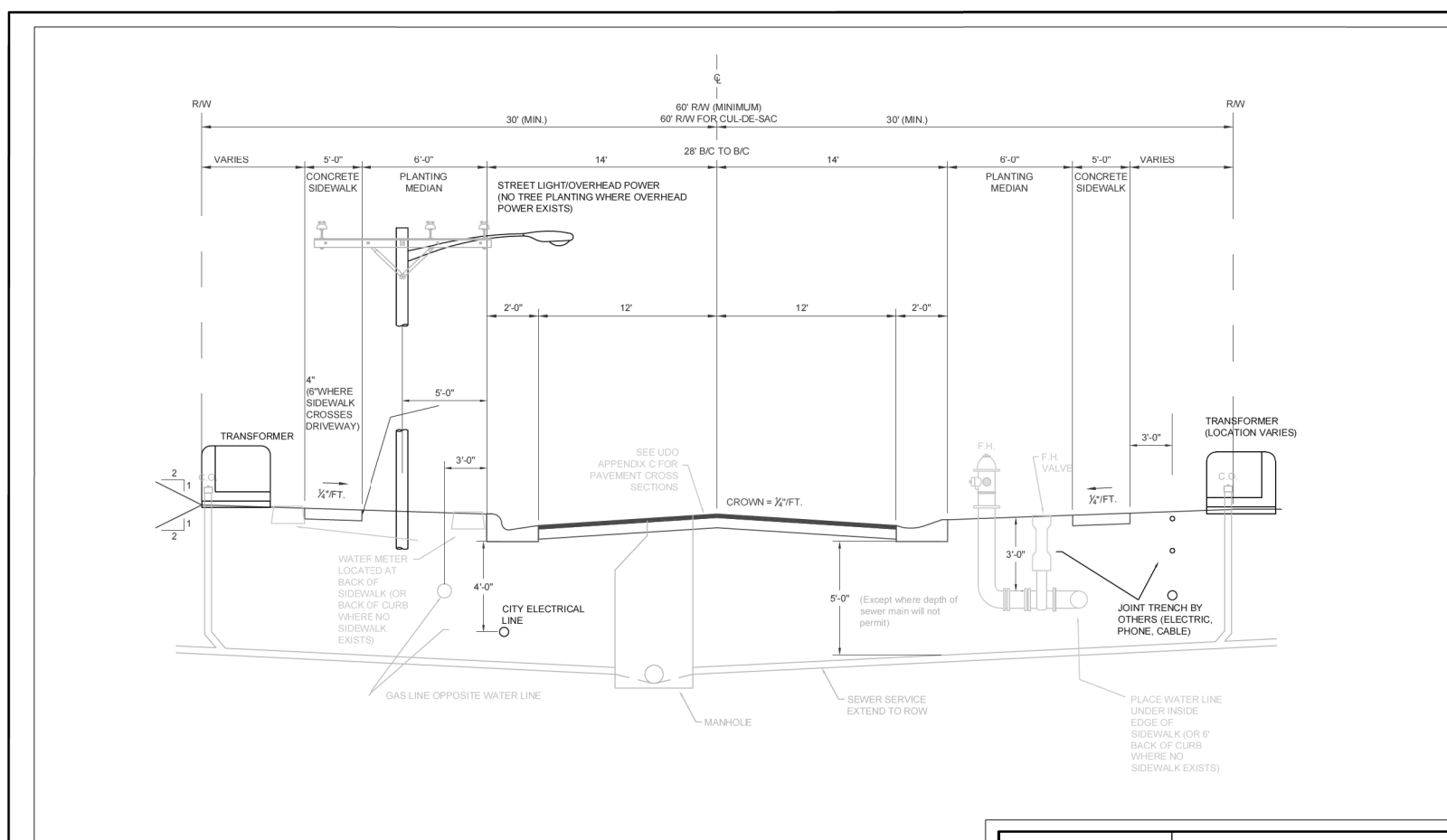
GENERAL NOTES:

- REFER TO THE CITY OF CONCORD SPECIFICATIONS FOR ACCEPTABLE MANUFACTURES OF MATERIALS.
- PROVIDE 12" BRASS NIPPLE PAST BOX.
- THE METER HOUSING SHALL BE MID STATE PLASTICS OR EQUAL; 3/4-INCH BOX MSBCF - 1118-12XL AND LID MSCBC-1118- RTR; AND 1-INCH BOX MSBCF - 1324-12XL AND LID MSCBC-1324- RTR. METER BOX RIM SHALL BE SET FLUSH WITH FINAL GRADE. THE WATER METER BOX ASSEMBLY SHALL NOT BE LOCATED WITHIN A ROAD, STREET, DRIVEWAY, SIDEWALK OR DRAINAGE FEATURE.
- ALL APPURTENANCES FOR THE INSTALLATION OF THE WATER METER; THE METER, BRASS GROUND LOCKABLE METER CUTOFF, GASKETS, AND EXPANSION CONNECTION; SHALL BE INSTALLED BY THE CITY OF CONCORD, IF CONNECTION IS TO AN EXISTING MAIN.
- THE BASE OF THE METER BOX MUST HAVE AT LEAST 6-INCHES TO 8-INCHES OF #57 WASHED STONE.

GENERAL LOCATION REQUIREMENT:

N.T.S.

CITY OF CONCORD STANDARD DETAIL				
WATER METER STANDARD DETAIL				
3/4-INCH AND 1-INCH RESIDENTIAL WATER SERVICE METER				
No.	Date	By	REVISION	
1	9/7/07	JEC	CONTINUOUS PIPE & CONNECTION, SWM	
Drawn By:	Checked By:	Approved By:	Date	Shit of
SVM	PLK	MSH	02/05	



UTILITY LAYOUT

N.T.S.

CITY OF CONCORD STANDARD DETAIL				
UTILITY LAYOUT				
No.	Date	By	REVISION	
1	12/28/05	JEC	REVISED FROM WSACC	
Drawn By:	Checked By:	Approved By:	Date	Shit of
JEC	PLK	MSH	10/07	

UTILITY DETAILS