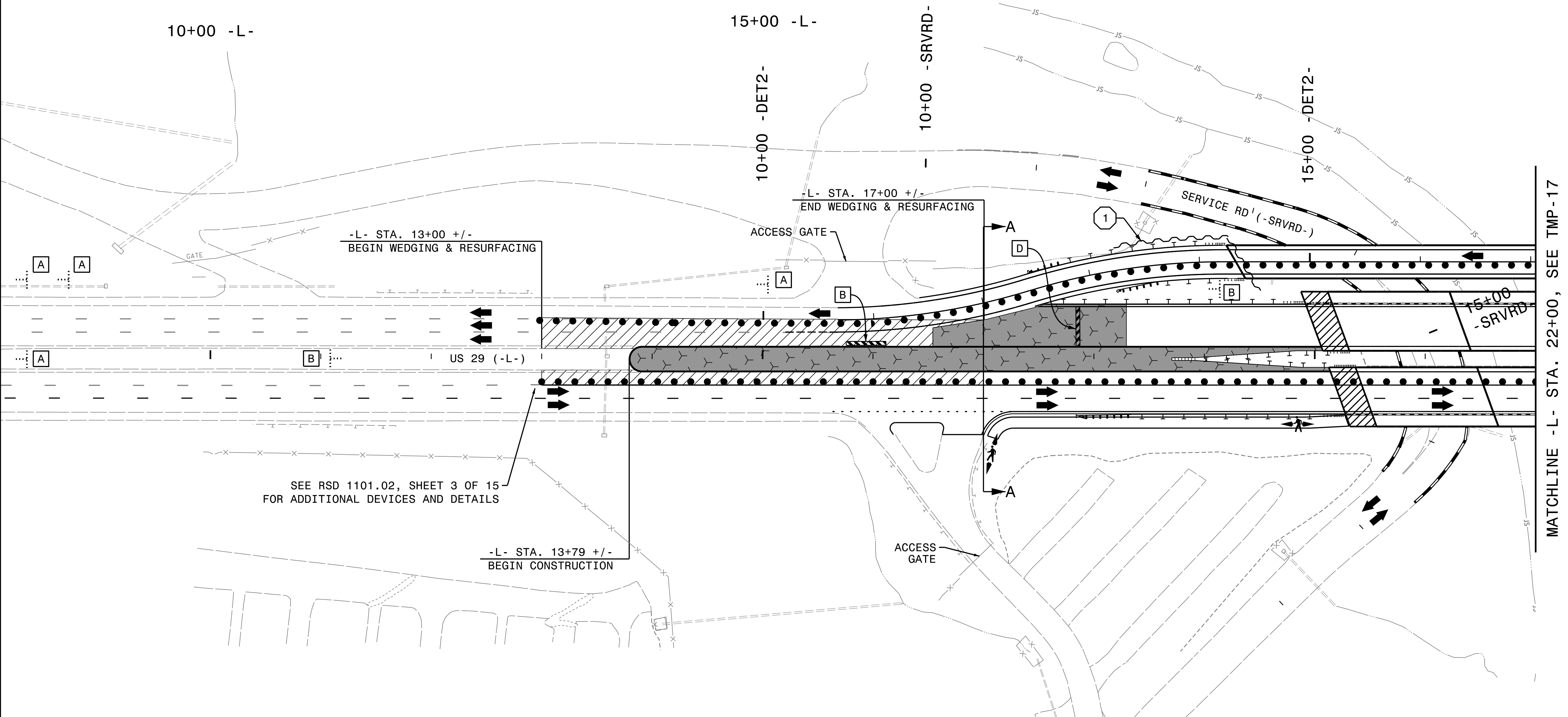


- ① TEMPORARY SHORING TO REMAIN FROM PHASE 1 (SEE TMP-4)
- SEE SHEET TMP-2A FOR TEMPORARY SHORING INFORMATION.
- A SIGNS TO REMAIN FROM PHASE 1 (SEE TMP-4)
- B SIGNS AND DEVICES TO REMAIN FROM PHASE 2 (SEE TMP-6)
- D SIGNS AND DEVICES TO REMAIN FROM PHASE 4, STEP 1 (SEE TMP-12)

PROJ. REFERENCE NO. B-5123	SHEET NO. TMP-16
HDR Engineering, Inc. of the Carolinas 555 Fayetteville St., Suite 900 Raleigh, N.C. 27601 N.C.B.E.L.S. License Number: F-0116	

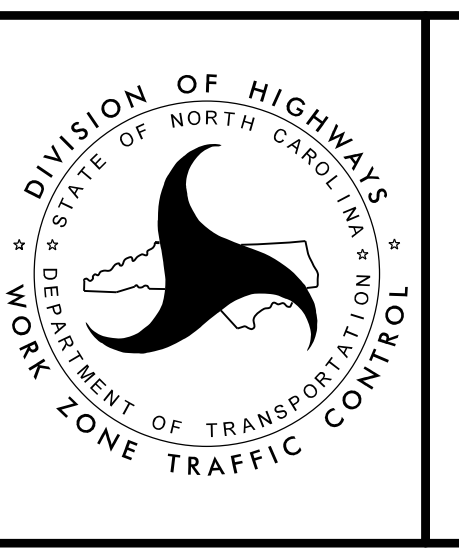
20+00 -L-



APPROVED:

DATE: 1/29/2016

**DOCUMENT NOT CONSIDERED FINAL
UNLESS ALL SIGNATURES COMPLETED**



PHASE 4
STEP 3