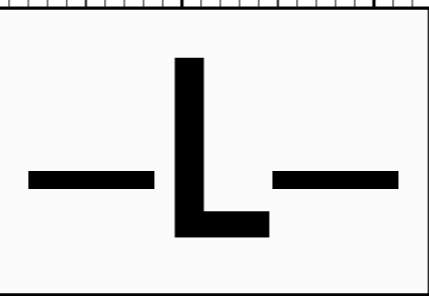
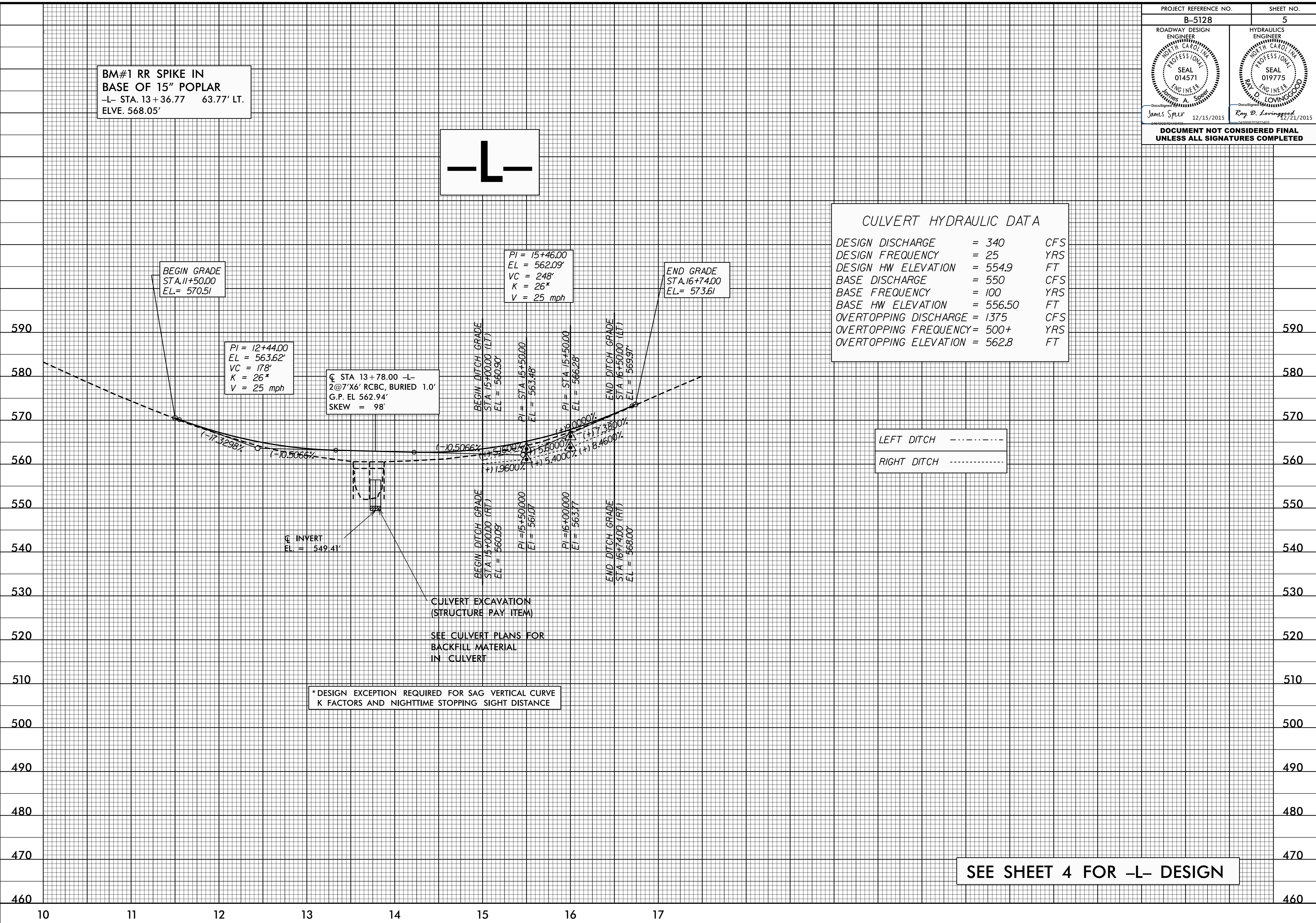


**DOCUMENT NOT CONSIDERED FINAL
UNLESS ALL SIGNATURES COMPLETED**

**BM#1 RR SPIKE IN
BASE OF 15" POPLAR**
-L- STA. 13+36.77 63.77' LT.
ELVE. 568.05'



CULVERT HYDRAULIC DATA	
DESIGN DISCHARGE	= 340 CFS
DESIGN FREQUENCY	= 25 YRS
DESIGN HW ELEVATION	= 554.9 FT
BASE DISCHARGE	= 550 CFS
BASE FREQUENCY	= 100 YRS
BASE HW ELEVATION	= 556.50 FT
OVERTOPPING DISCHARGE	= 1375 CFS
OVERTOPPING FREQUENCY	= 500+ YRS
OVERTOPPING ELEVATION	= 562.8 FT



BEGIN GRADE
STA. 11+50.00
EL. = 570.51

PI = 12+44.00
EL = 563.62'
VC = 178'
K = 26*
V = 25 mph

⊕ STA 13+78.00 -L-
2@7'X6' RCBC, BURIED 1.0'
G.P. EL 562.94'
SKEW = 98'

PI = 15+46.00
EL = 562.09'
VC = 248'
K = 26*
V = 25 mph

END GRADE
STA. 16+74.00
EL. = 573.61

BEGIN DITCH GRADE
STA 15+00.00 (LT)
EL = 560.90'

PI = STA 15+50.00
EL = 563.48'

PI = STA 15+50.00
EL = 566.28'

END DITCH GRADE
STA 16+50.00 (LT)
EL = 569.97'

⊕ INVERT
EL = 549.41'

BEGIN DITCH GRADE
STA 15+00.00 (RT)
EL = 560.09'

PI = 15+50.000
EL = 561.07'

PI = 16+00.000
EL = 563.77'

END DITCH GRADE
STA 16+74.00 (RT)
EL = 568.00'

LEFT DITCH -----
RIGHT DITCH -----

CULVERT EXCAVATION
(STRUCTURE PAY ITEM)
SEE CULVERT PLANS FOR
BACKFILL MATERIAL
IN CULVERT

* DESIGN EXCEPTION REQUIRED FOR SAG VERTICAL CURVE
K FACTORS AND NIGHTTIME STOPPING SIGHT DISTANCE

SEE SHEET 4 FOR -L- DESIGN

5/14/99

14-DEC-2015 07:47
D:\PROJECTS\B-5128\p1.dgn