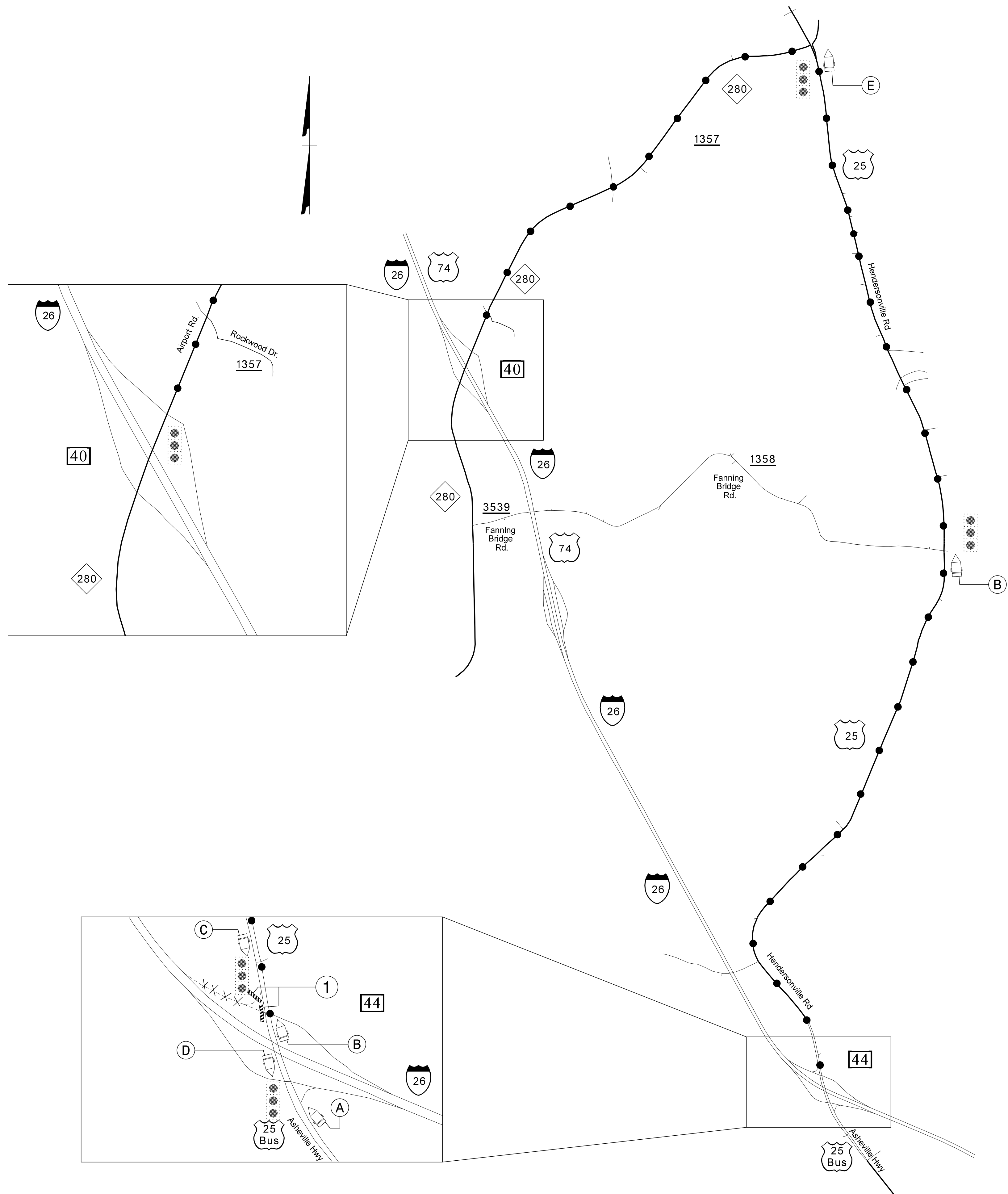


**This electronic collection of documents is provided  
for the convenience of the user  
and is Not a Certified Document –**

**The documents contained herein were originally issued  
and sealed by the individuals whose names and license  
numbers appear on each page, on the dates appearing  
with their signature on that page.**

**This file or an individual page  
shall not be considered a certified document.**



MESSAGE NO. 1	MESSAGE NO. 2
RAMP TO I-26 W CLOSED	DETOUR AHEAD

CHANGEABLE MESSAGE SIGN

(A)

MESSAGE NO. 1	MESSAGE NO. 2
DETOUR I-26 WEST	STRAIGHT ON US 25 NORTH

CHANGEABLE MESSAGE SIGN

(B)

MESSAGE NO. 1	MESSAGE NO. 2
RAMP TO I-26 W CLOSED	U-TURN AT NEXT SIGNAL

CHANGEABLE MESSAGE SIGN

(C)

MESSAGE NO. 1	MESSAGE NO. 2
DETOUR I-26 WEST	U-TURN AT SIGNAL

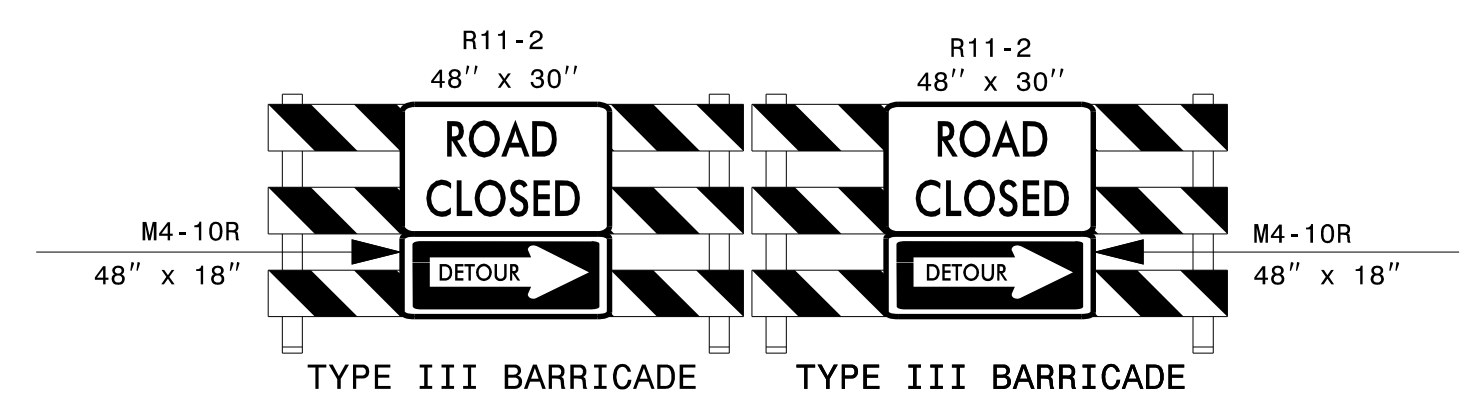
CHANGEABLE MESSAGE SIGN

(D)

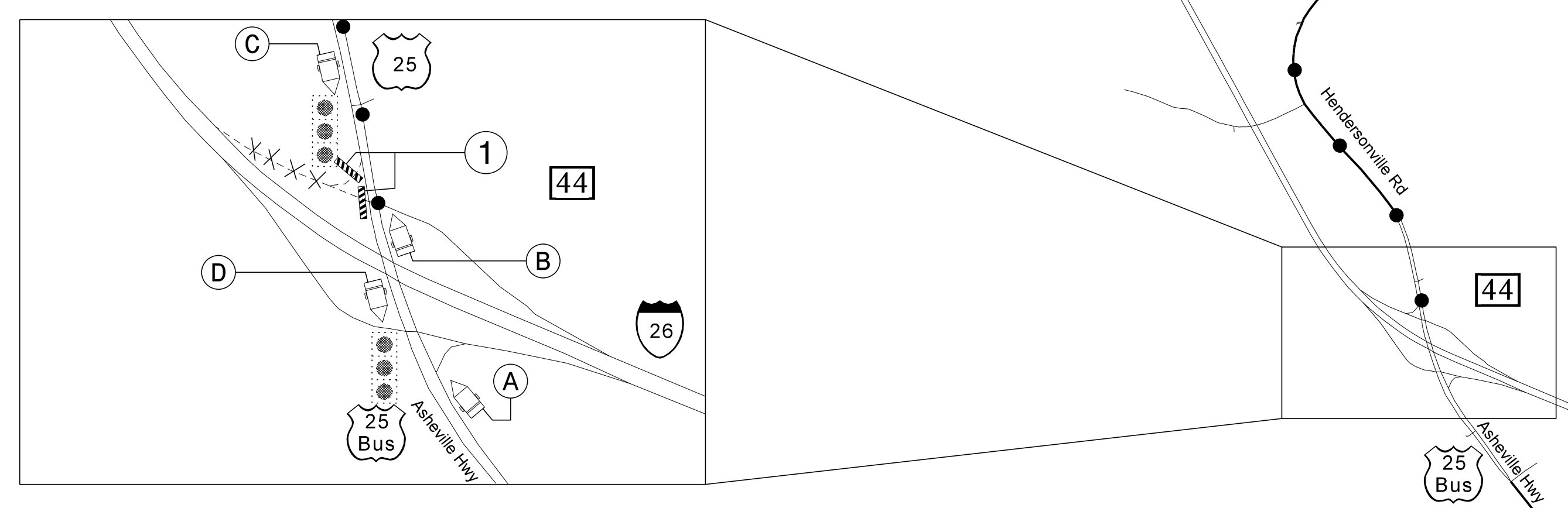
MESSAGE NO. 1	MESSAGE NO. 2
DETOUR I-26 WEST	LEFT AT SIGNAL

CHANGEABLE MESSAGE SIGN

(E)



(1)

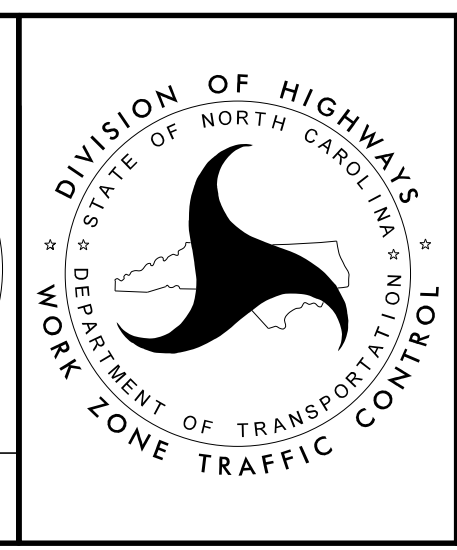


APPROVED: *J. W. Woolard, Jr.*  
079C18E6AD8427

DATE: 1/19/2016

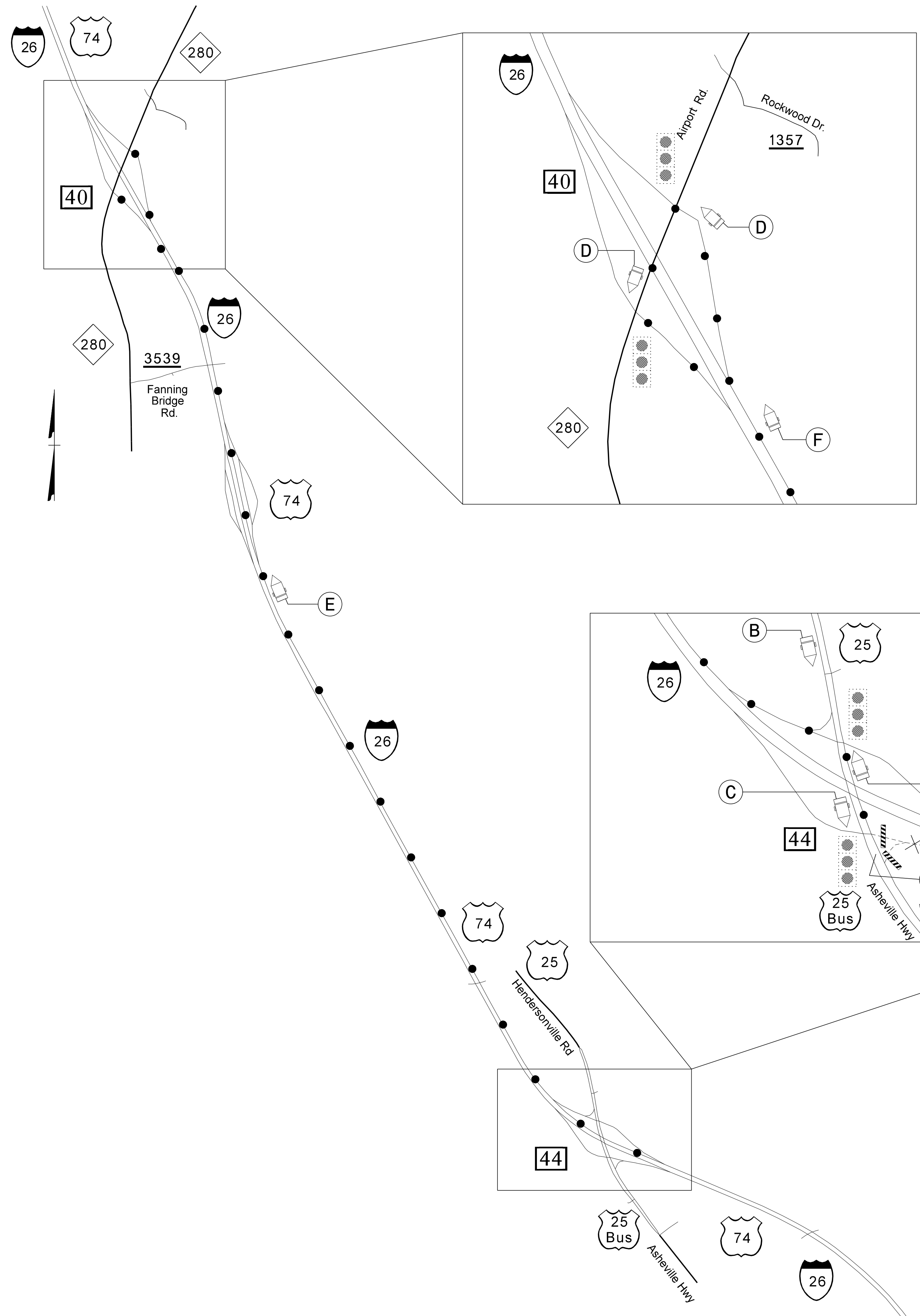
SEAL 019862  
 ENGINEER  
 J. W. WOOLARD, JR.

**DOCUMENT NOT CONSIDERED FINAL  
 UNLESS ALL SIGNATURES COMPLETED**



**I-26 WESTBOUND  
 EXIT 44  
 ENTRANCE RAMP  
 DETOUR**

1/19/2016 p:\tip\projects-1\5758\traffic\control\tp\I-5758\_TC\_TMP\_1.dgn User:kbroadwell



MESSAGE NO. 1	MESSAGE NO. 2
RAMP TO I-26 E CLOSED	DETOUR AHEAD
CHANGEABLE MESSAGE SIGN	

(A)

MESSAGE NO. 1	MESSAGE NO. 2
DETOUR I-26 EAST	RIGHT AT SIGNAL
CHANGEABLE MESSAGE SIGN	

(B)

MESSAGE NO. 1	MESSAGE NO. 2
RAMP TO I-26 E CLOSED	U-TURN AT SIGNAL
CHANGEABLE MESSAGE SIGN	

(C)

MESSAGE NO. 1	MESSAGE NO. 2
DETOUR I-26 EAST	LEFT AT SIGNAL
CHANGEABLE MESSAGE SIGN	

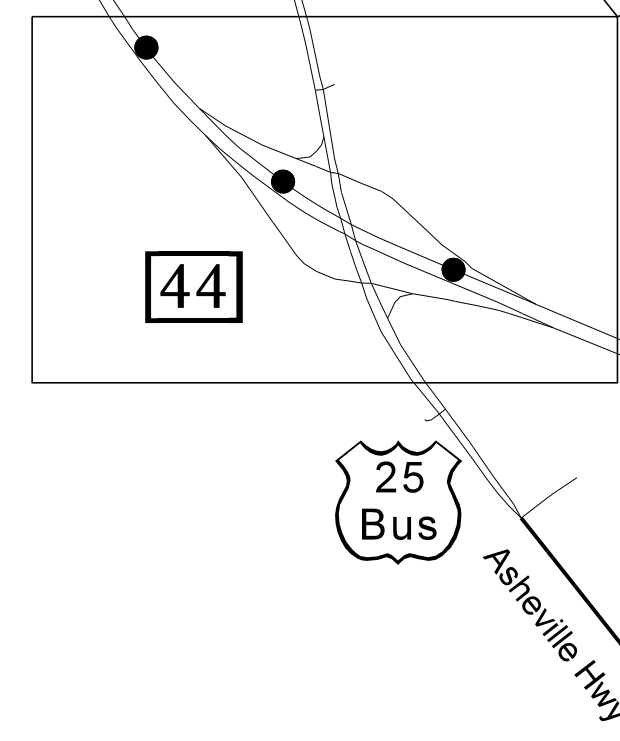
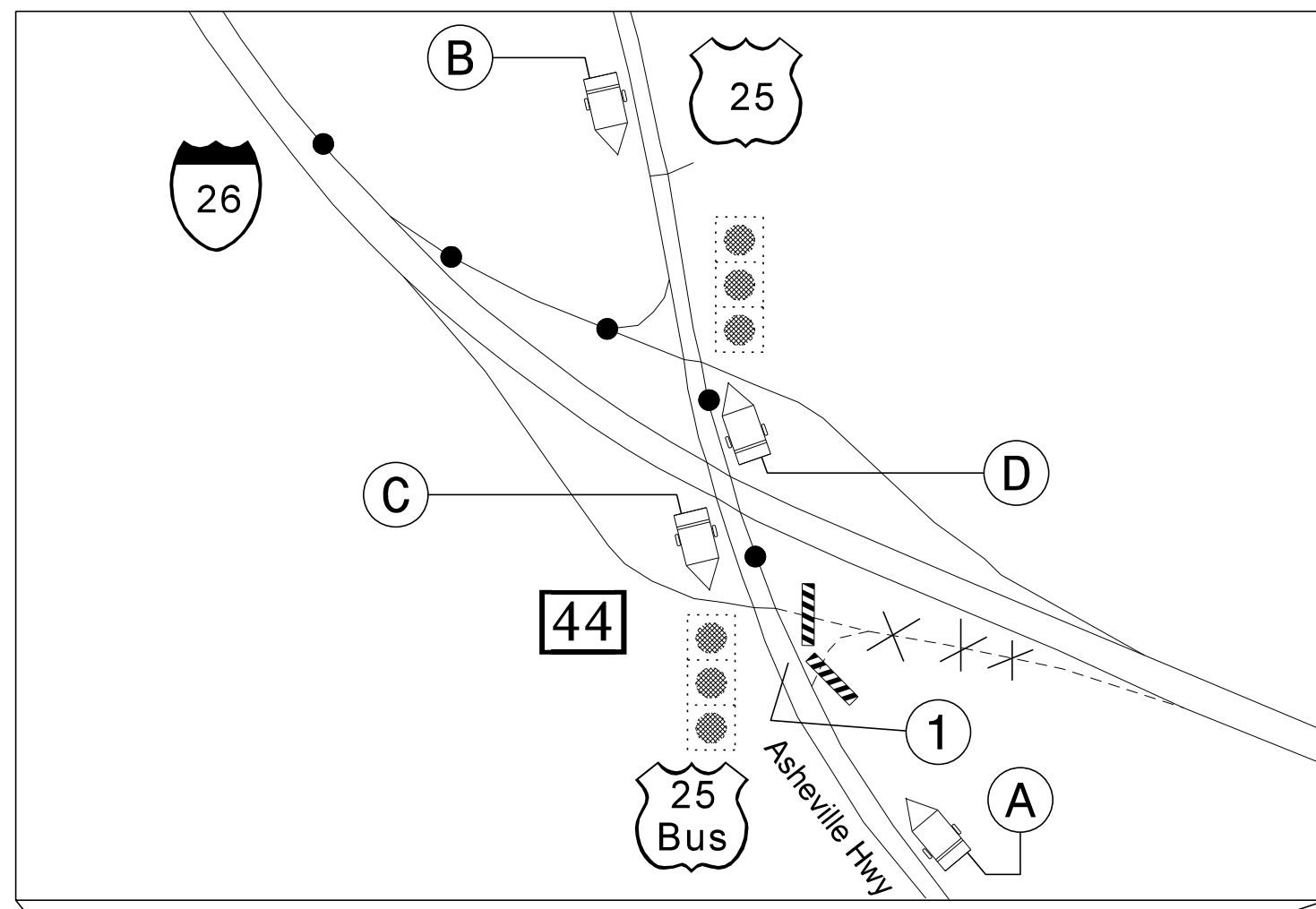
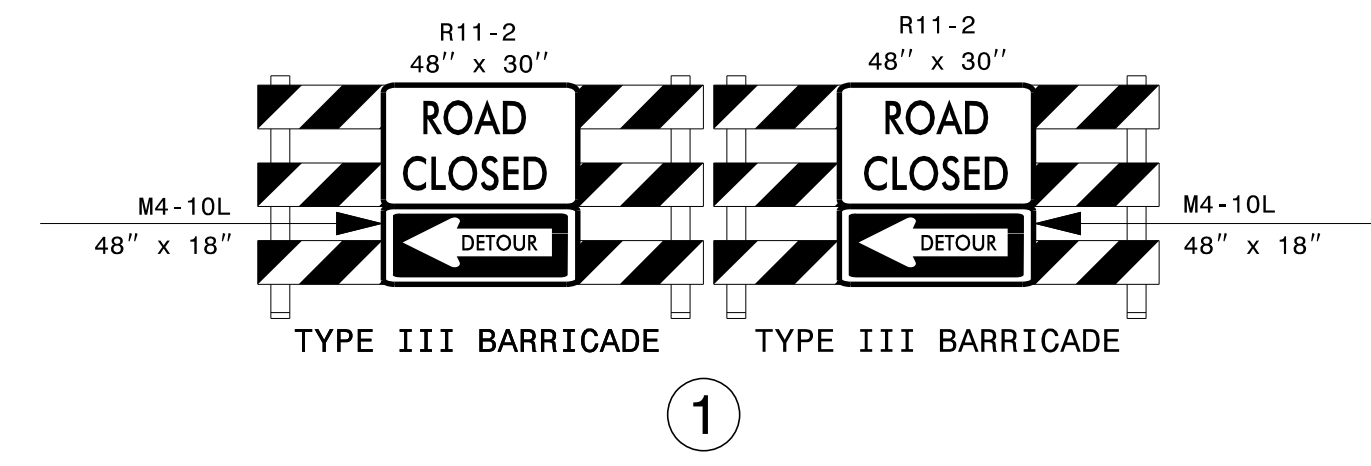
(D)

MESSAGE NO. 1	MESSAGE NO. 2
DETOUR I-26 E 1 MILE	USE EXIT 40 1 MILE
CHANGEABLE MESSAGE SIGN	

(E)

MESSAGE NO. 1	MESSAGE NO. 2
DETOUR I-26 E	EXIT 40 NEXT RIGHT
CHANGEABLE MESSAGE SIGN	

(F)

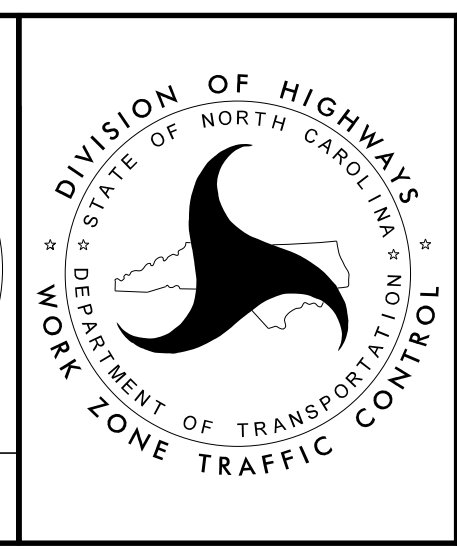


APPROVED: *J. W. Woolard, Jr.*  
679C18E6AD8427

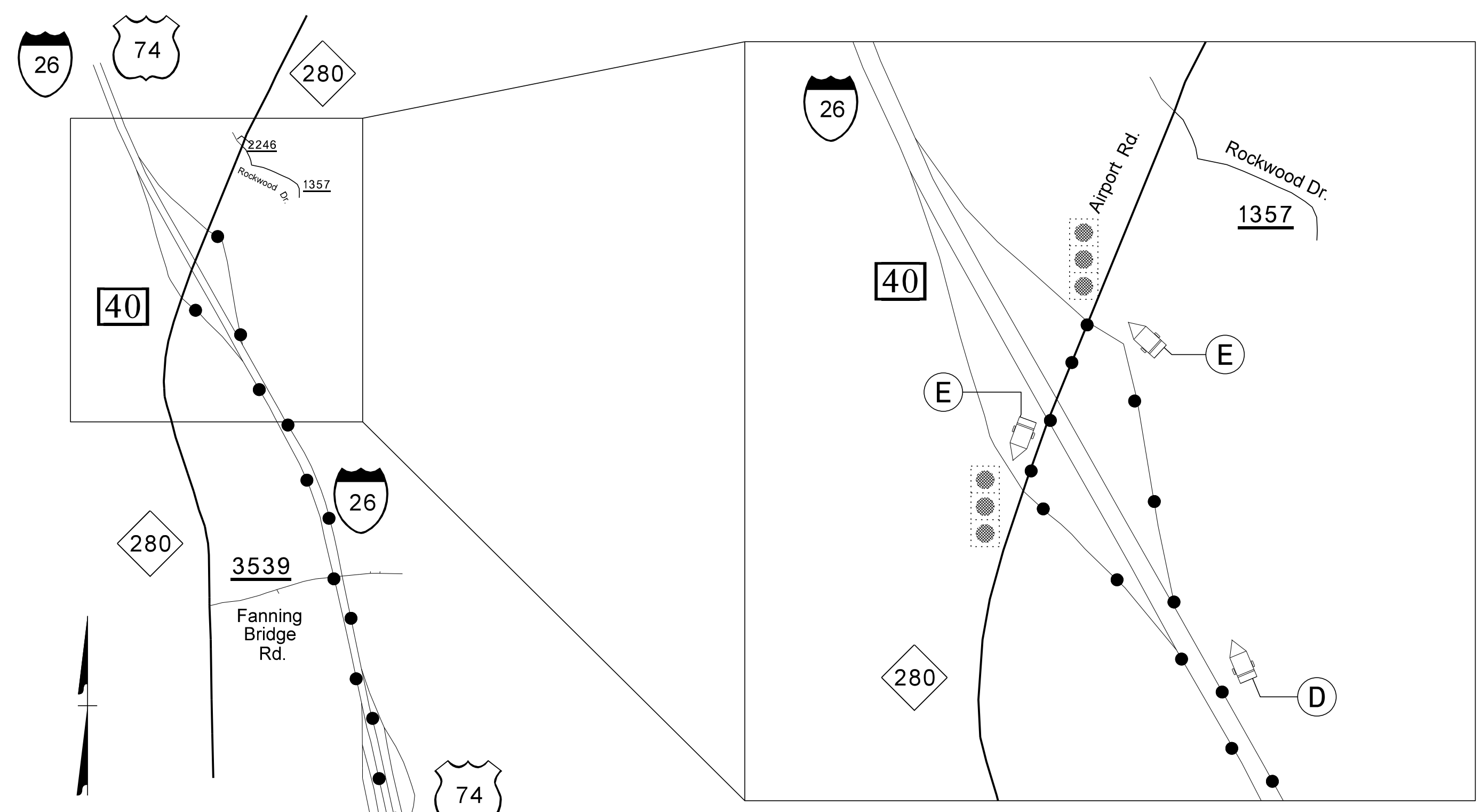
DATE: 1/19/2016

J. W. WOOLARD, JR.  
 ENGINEER  
 NORTH CAROLINA

**DOCUMENT NOT CONSIDERED FINAL  
 UNLESS ALL SIGNATURES COMPLETED**



**I-26 EASTBOUND  
 EXIT 44  
 ENTRANCE RAMP  
 DETOUR**



MESSAGE NO. 1	MESSAGE NO. 2
EXIT 44 TO US 25 CLOSED	DETOUR AHEAD

CHANGEABLE MESSAGE SIGN

(A)

MESSAGE NO. 1	MESSAGE NO. 2
EXIT 44 US 25 N CLOSED	DETOUR TO EXIT 40

CHANGEABLE MESSAGE SIGN

(B)

MESSAGE NO. 1	MESSAGE NO. 2
DETOUR TO US 25 1 MILE	USE EXIT 40 1 MILE

CHANGEABLE MESSAGE SIGN

(C)

MESSAGE NO. 1	MESSAGE NO. 2
DETOUR TO US 25	EXIT 40 NEXT RIGHT

CHANGEABLE MESSAGE SIGN

(D)

MESSAGE NO. 1	MESSAGE NO. 2
DETOUR TO US 25	LEFT AT SIGNAL

CHANGEABLE MESSAGE SIGN

(E)

MESSAGE NO. 1	MESSAGE NO. 2
DETOUR TO US 25 1 MILE	USE EXIT 44 1 MILE

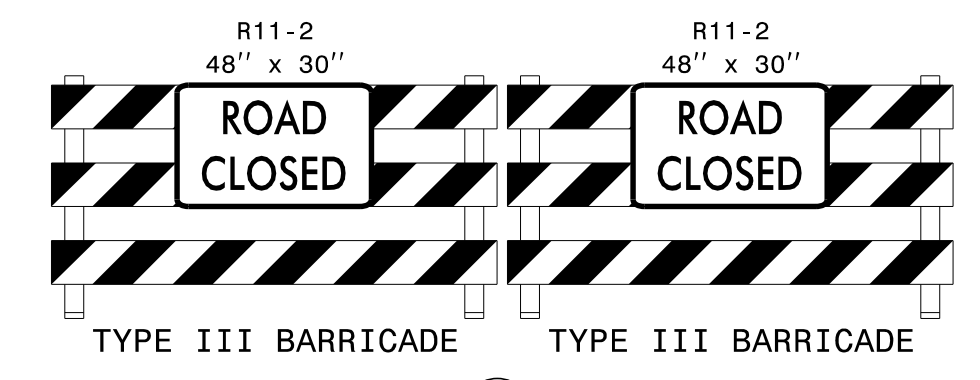
CHANGEABLE MESSAGE SIGN

(F)

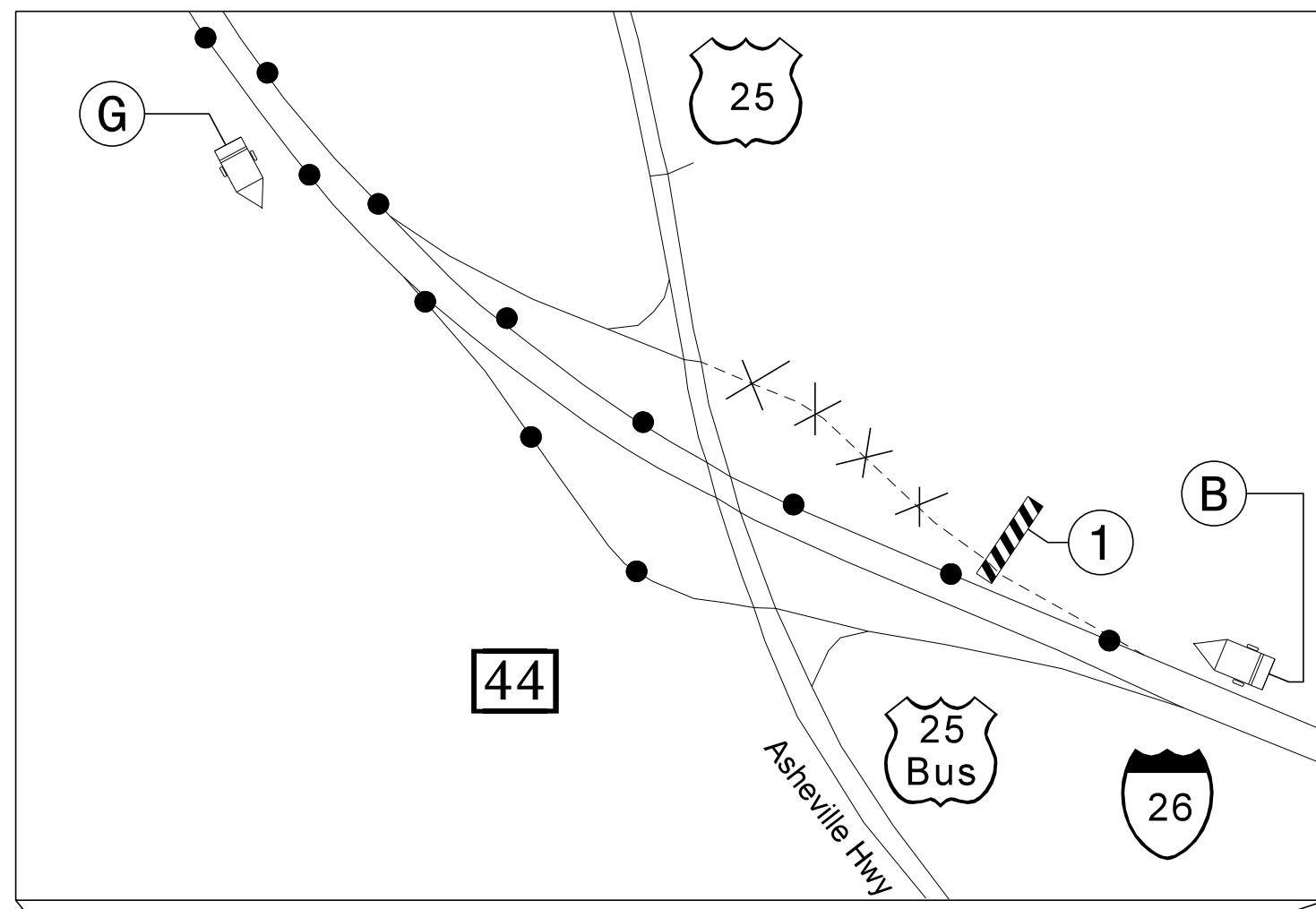
MESSAGE NO. 1	MESSAGE NO. 2
DETOUR TO US 25	EXIT 44 NEXT RIGHT

CHANGEABLE MESSAGE SIGN

(G)



(1)



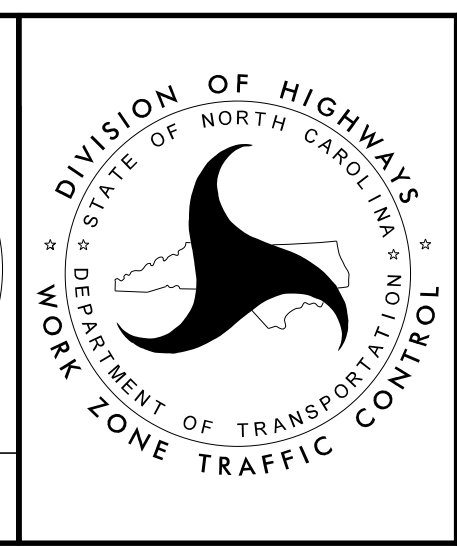
1 MILE PRIOR TO EXIT RAMP

(A)

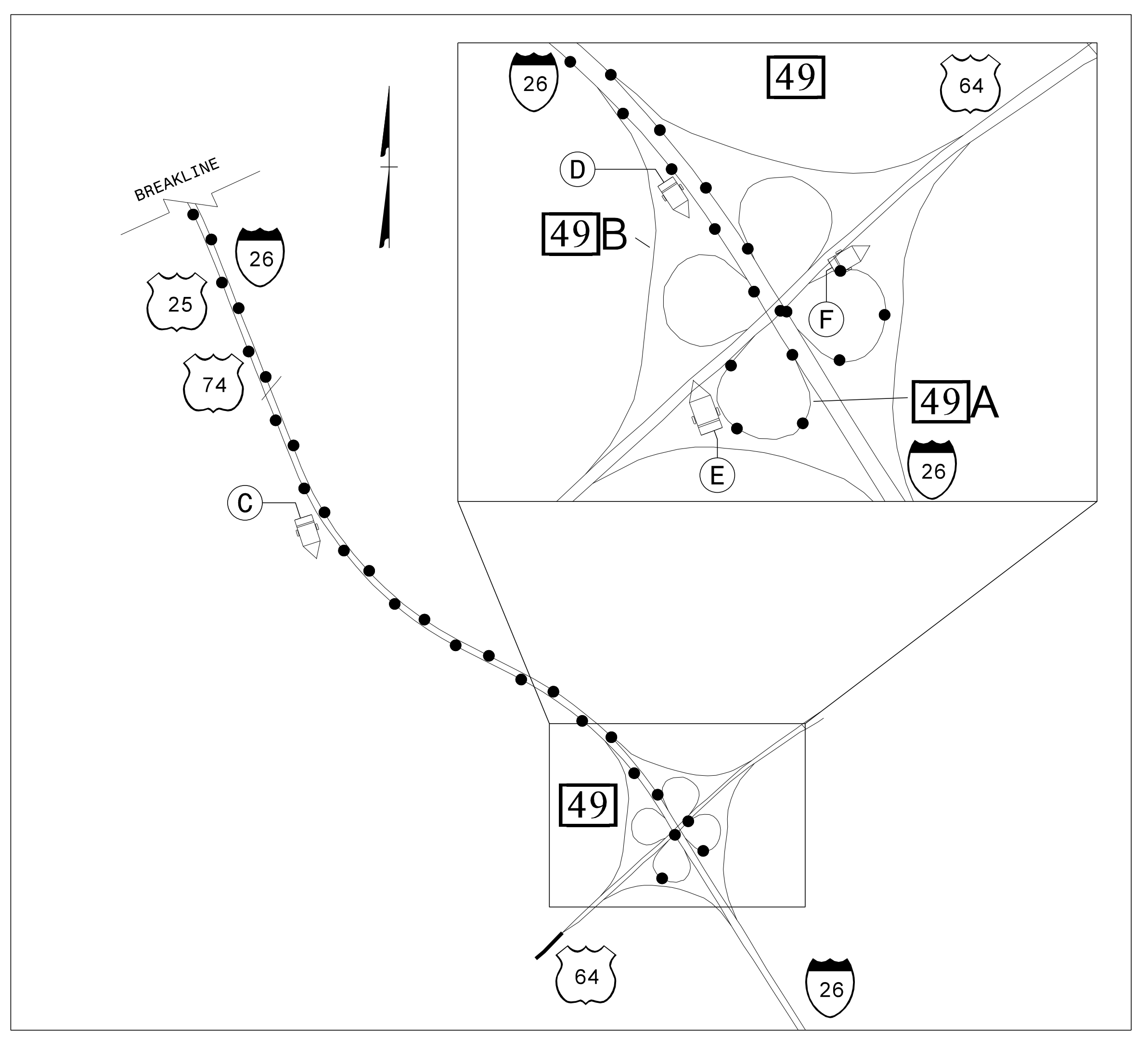
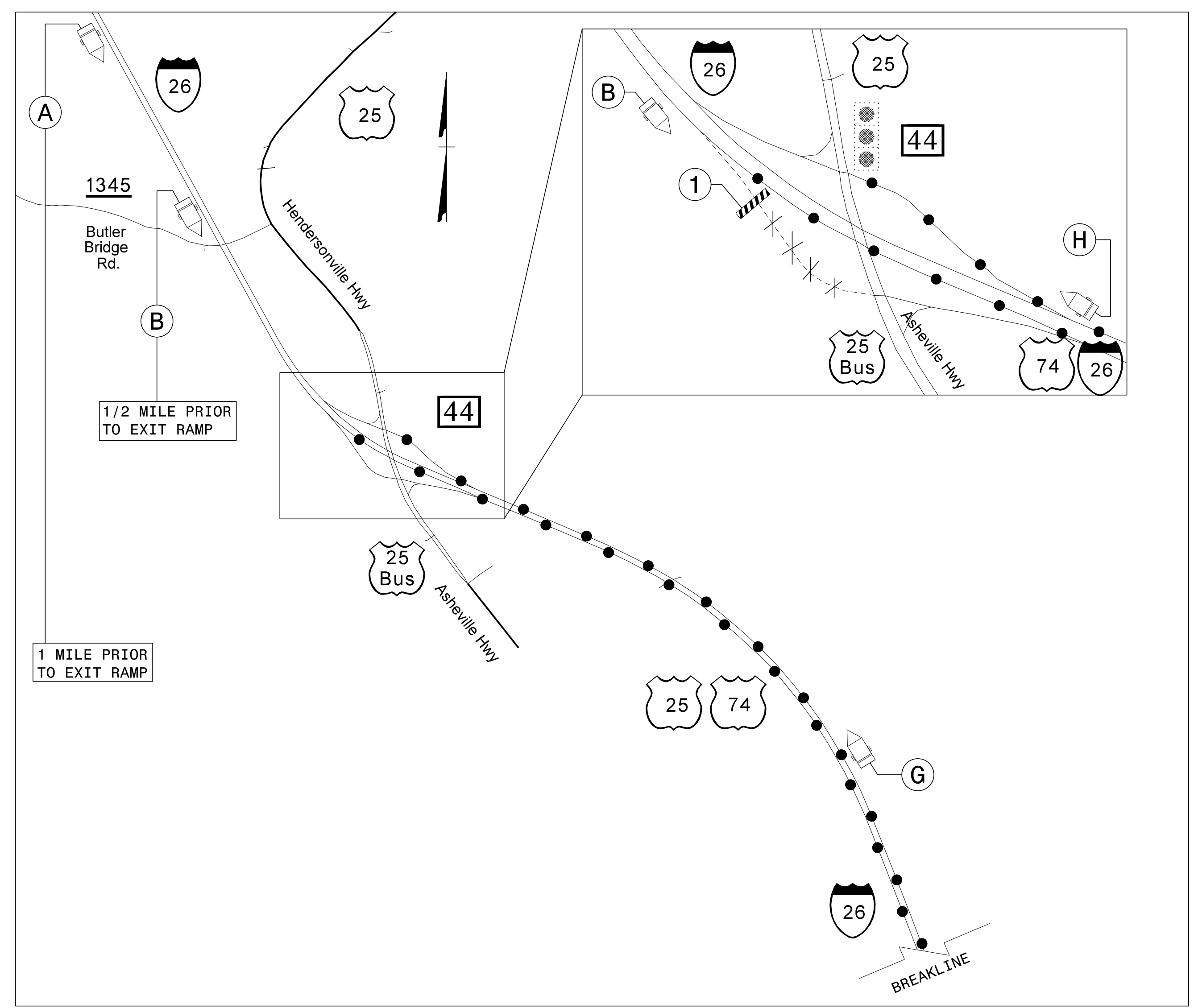
APPROVED: *J. W. Woolard, Jr.*  
679C18E6AD8427

DATE: 1/19/2016

**DOCUMENT NOT CONSIDERED FINAL UNLESS ALL SIGNATURES COMPLETED**



**I-26 WESTBOUND  
 EXIT 44  
 RAMP DETOUR**



MESSAGE NO. 1	MESSAGE NO. 2
EXIT 44	DETOUR
BUS. 25	AHEAD
CLOSED	

CHANGEABLE MESSAGE SIGN

A

MESSAGE NO. 1	MESSAGE NO. 2
EXIT 44	DETOUR
BUS. 25	TO
CLOSED	EXIT 49A

CHANGEABLE MESSAGE SIGN

B

MESSAGE NO. 1	MESSAGE NO. 2
DETOUR	USE
BUS. 25	EXIT 49A
1 MILE	1 MILE

CHANGEABLE MESSAGE SIGN

C

MESSAGE NO. 1	MESSAGE NO. 2
DETOUR	EXIT 49A
BUS. 25	NEXT
	RIGHT

CHANGEABLE MESSAGE SIGN

D

MESSAGE NO. 1	MESSAGE NO. 2
DETOUR	USE RAMP
BUS. 25	TO I-26
EXIT 44	WEST

CHANGEABLE MESSAGE SIGN

E

MESSAGE NO. 1	MESSAGE NO. 2
DETOUR	RIGHT
BUS. 25	TO I-26
EXIT 44	WEST

CHANGEABLE MESSAGE SIGN

F

MESSAGE NO. 1	MESSAGE NO. 2
DETOUR	USE
TO US 25	EXIT 44
1 MILE	1 MILE

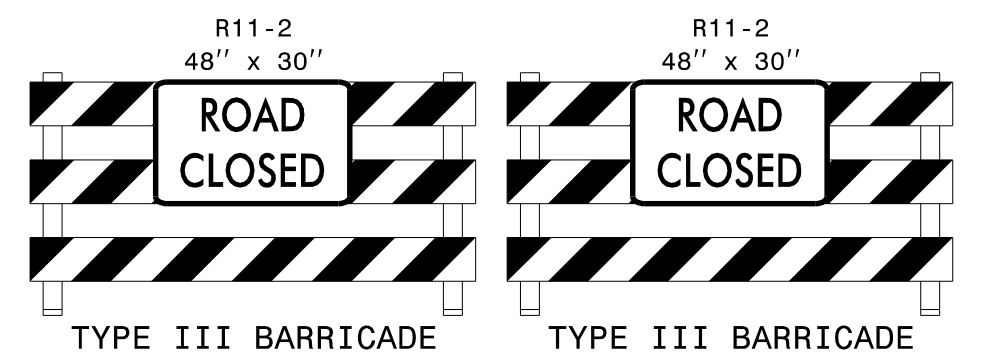
CHANGEABLE MESSAGE SIGN

G

MESSAGE NO. 1	MESSAGE NO. 2
DETOUR	EXIT 44
BUS. 25	NEXT
	RIGHT

CHANGEABLE MESSAGE SIGN

H

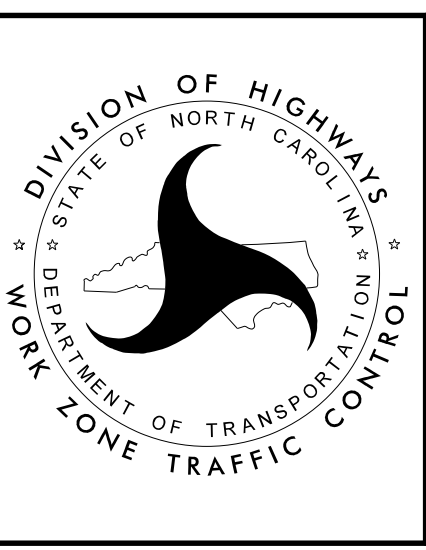


1

APPROVED: *J. W. Woolard, Jr.*  
679C18E6AD8427

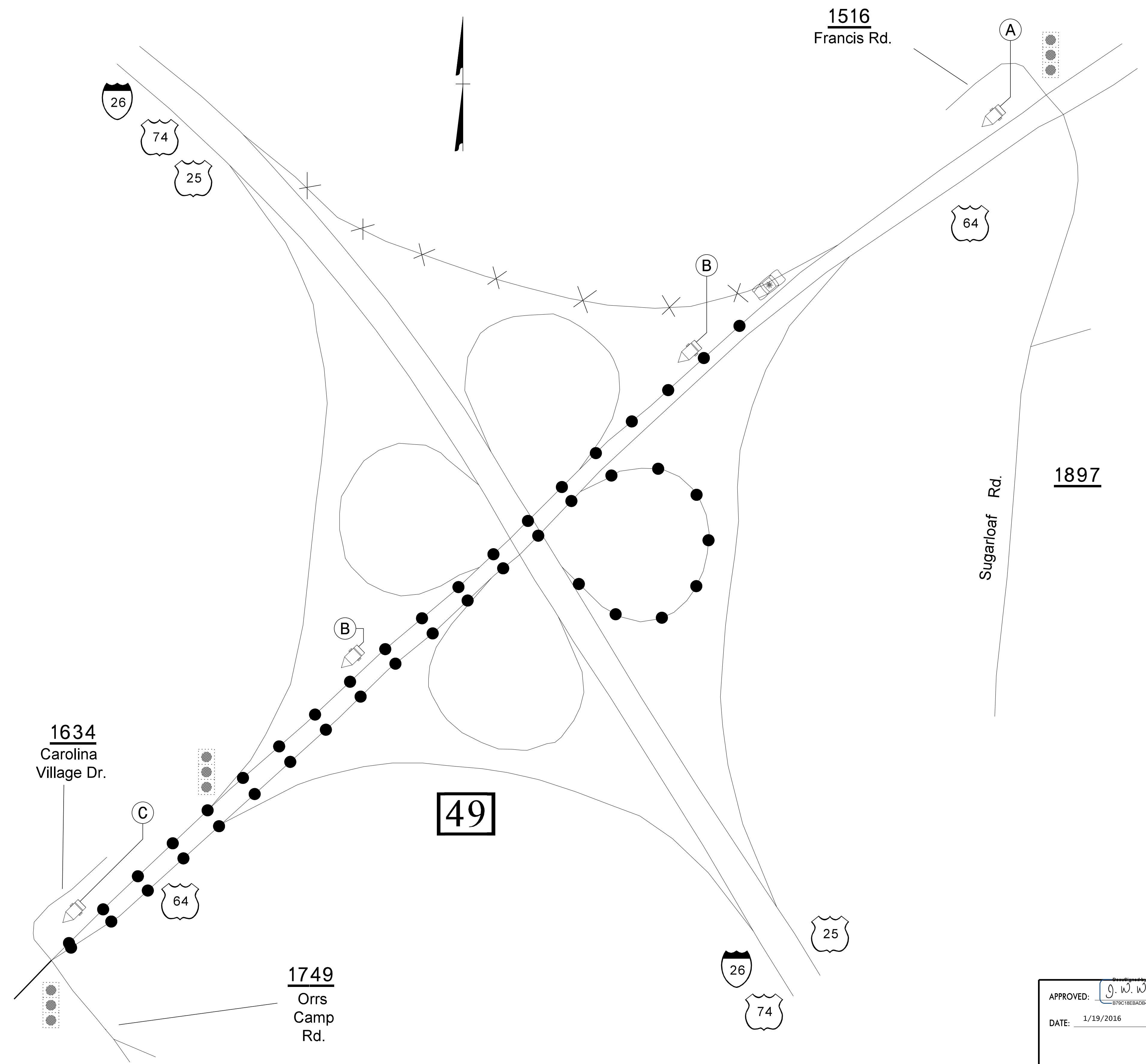
DATE: 1/19/2016

**DOCUMENT NOT CONSIDERED FINAL  
UNLESS ALL SIGNATURES COMPLETED**



**I-26 EASTBOUND  
EXIT 44  
RAMP DETOUR**

1/19/2016 p:\tip\projects-1\5758\traffic\control\tp\I-5758\_TC\_TMP\_4.dgn User:kbroadwell



MESSAGE NO. 1	MESSAGE NO. 2
RAMP TO I-26 W CLOSED	DETOUR AHEAD

CHANGEABLE MESSAGE SIGN

(A)

MESSAGE NO. 1	MESSAGE NO. 2
DETOUR TO I-26 WEST	U-TURN AT 2ND SIGNAL

CHANGEABLE MESSAGE SIGN

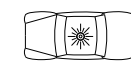
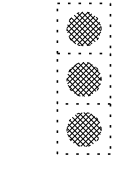
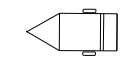
(B)

MESSAGE NO. 1	MESSAGE NO. 2
DETOUR I-26 WEST	U-TURN AT SIGNAL

CHANGEABLE MESSAGE SIGN

(C)

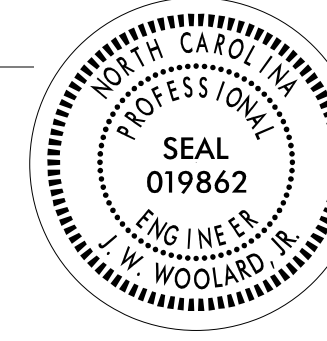
**LEGEND**

-  POLICE
-  EXISTING SIGNAL
-  CHANGEABLE MESSAGE SIGN

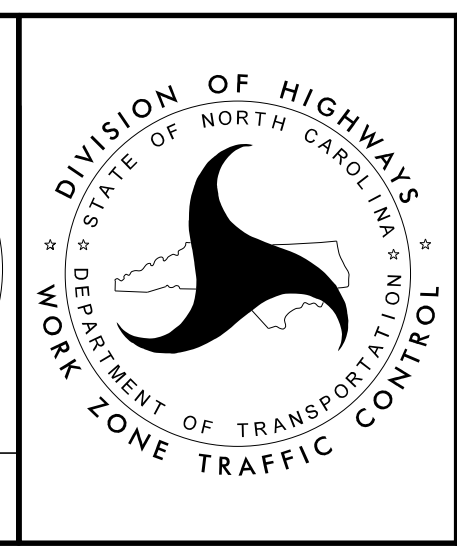
1/19/2016 p:\tpp\projects-1\5759\TrafficControl\CPN-5759\_TC\_TMP.dgn User:kbroadwell

APPROVED: *J. W. Woolard, Jr.*  
679C18E6AD8427

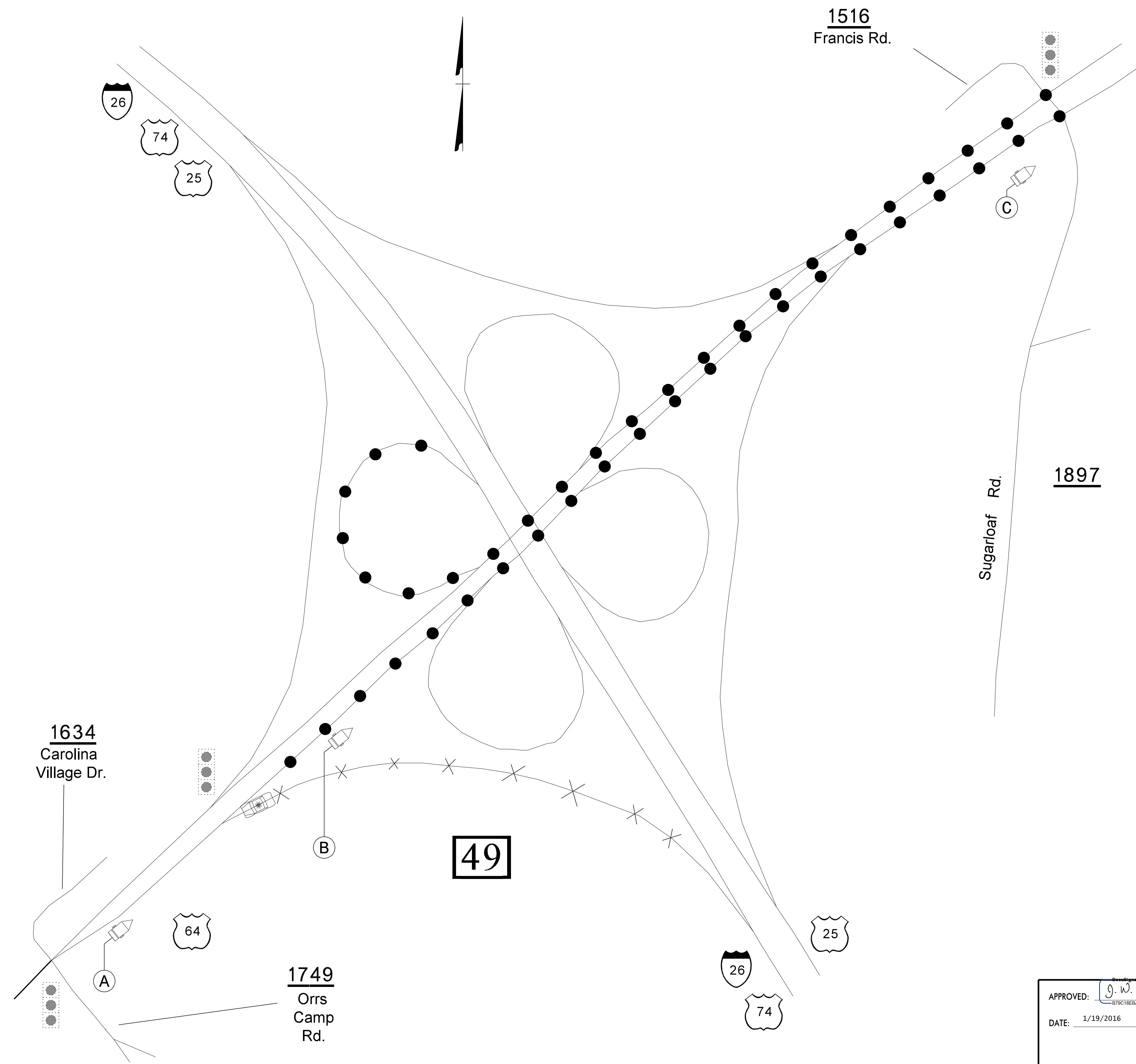
DATE: 1/19/2016



**DOCUMENT NOT CONSIDERED FINAL  
UNLESS ALL SIGNATURES COMPLETED**



**I-26 WESTBOUND  
EXIT 49  
ENTRANCE RAMP  
DETOUR**



MESSAGE NO. 1	MESSAGE NO. 2
RAMP TO I-26 E CLOSED	DETOUR AHEAD

CHANGEABLE MESSAGE SIGN

(A)

MESSAGE NO. 1	MESSAGE NO. 2
DETOUR TO I-26 EAST	U-TURN AT NEXT SIGNAL

CHANGEABLE MESSAGE SIGN

(B)

MESSAGE NO. 1	MESSAGE NO. 2
DETOUR I-26 EAST	U-TURN AT SIGNAL

CHANGEABLE MESSAGE SIGN

(C)

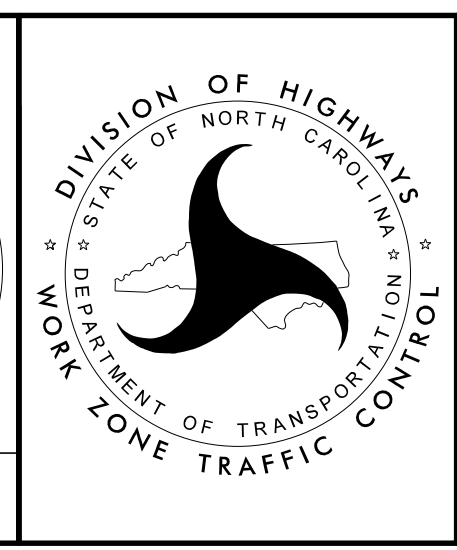
LEGEND	
	POLICE
	EXISTING SIGNAL
	CHANGEABLE MESSAGE SIGN

1/19/2016 p:\tip\projects-1\5759\TrafficControl\CPN-5759\_TC\_TMP\_2.dgn User:bradwell

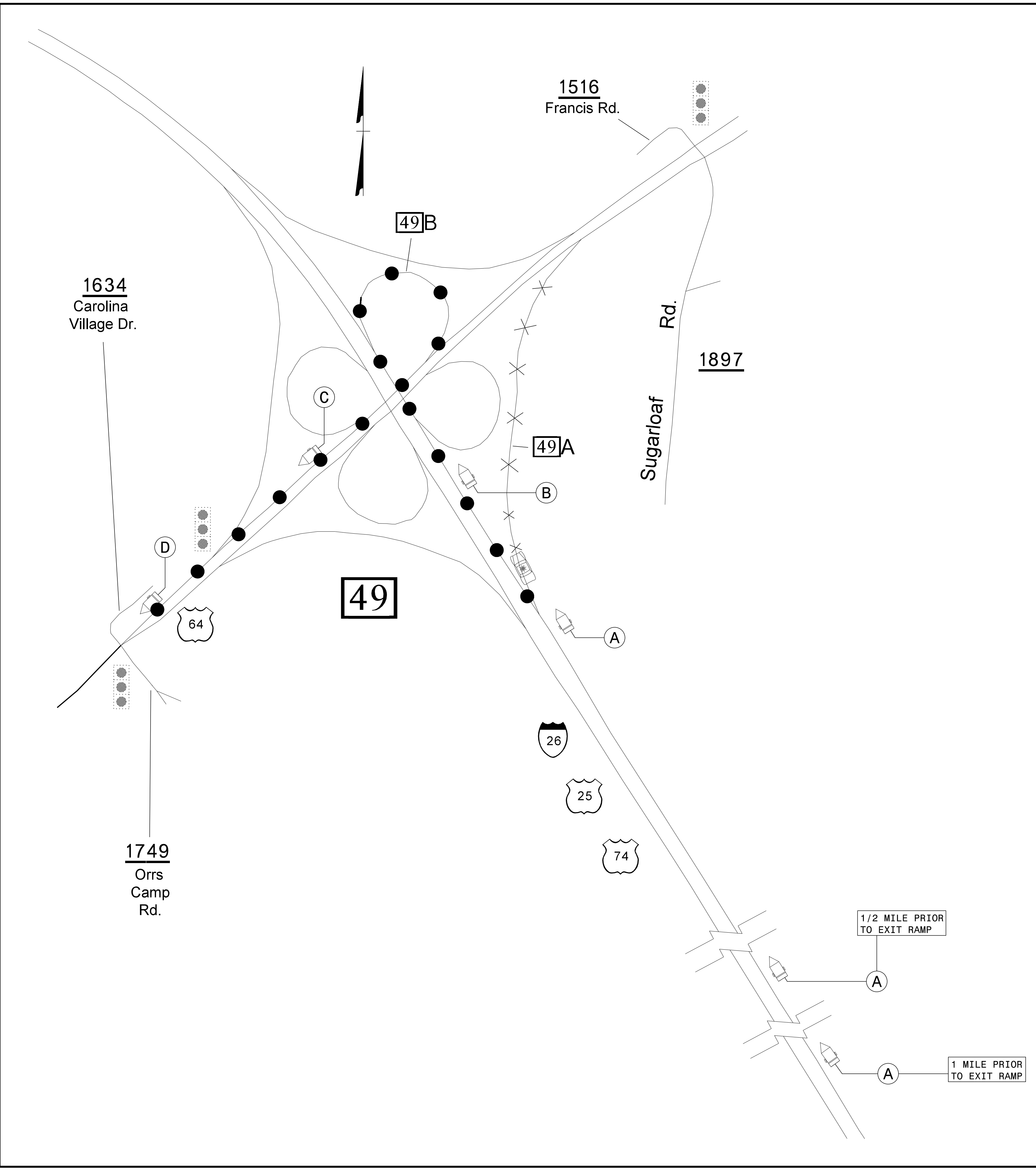
APPROVED: *J. W. Woolard, Jr.*  
679C18E6AD8427

DATE: 1/19/2016

**DOCUMENT NOT CONSIDERED FINAL  
UNLESS ALL SIGNATURES COMPLETED**



**I-26 EASTBOUND  
EXIT 49  
ENTRANCE RAMP  
DETOUR**



MESSAGE NO. 1	MESSAGE NO. 2
EXIT 49A TO US 64 CLOSED	DETOUR EXIT 49B AHEAD
CHANGEABLE MESSAGE SIGN	

(A)

MESSAGE NO. 1	MESSAGE NO. 2
DETOUR EXIT 49A TO US 64	EXIT NEXT RIGHT
CHANGEABLE MESSAGE SIGN	

(B)

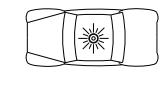
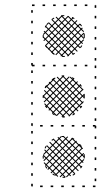
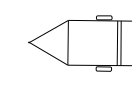
MESSAGE NO. 1	MESSAGE NO. 2
DETOUR TO US 64 EAST	U-TURN AT 2ND SIGNAL
CHANGEABLE MESSAGE SIGN	

(C)

MESSAGE NO. 1	MESSAGE NO. 2
DETOUR TO US 64 WEST	U-TURN AT NEXT SIGNAL
CHANGEABLE MESSAGE SIGN	

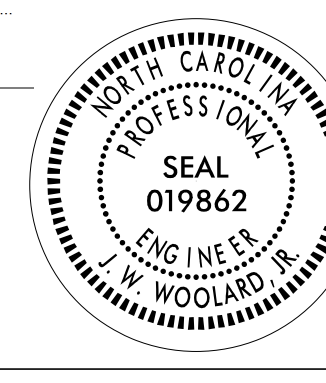
(D)

**LEGEND**

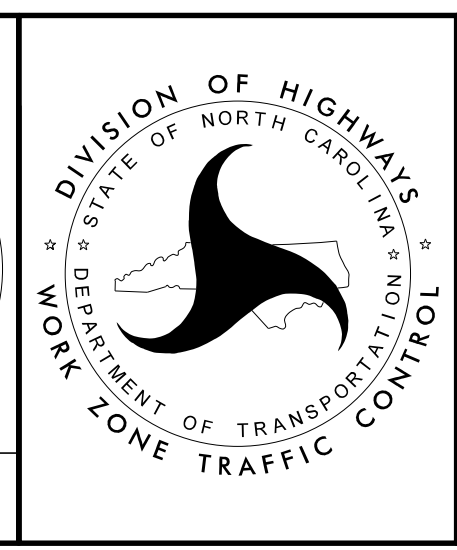
-  — POLICE
-  — EXISTING SIGNAL
-  — CHANGEABLE MESSAGE SIGN

APPROVED: *J. W. Woolard, Jr.*  
679C18E6AD8427

DATE: 1/19/2016



**DOCUMENT NOT CONSIDERED FINAL  
UNLESS ALL SIGNATURES COMPLETED**

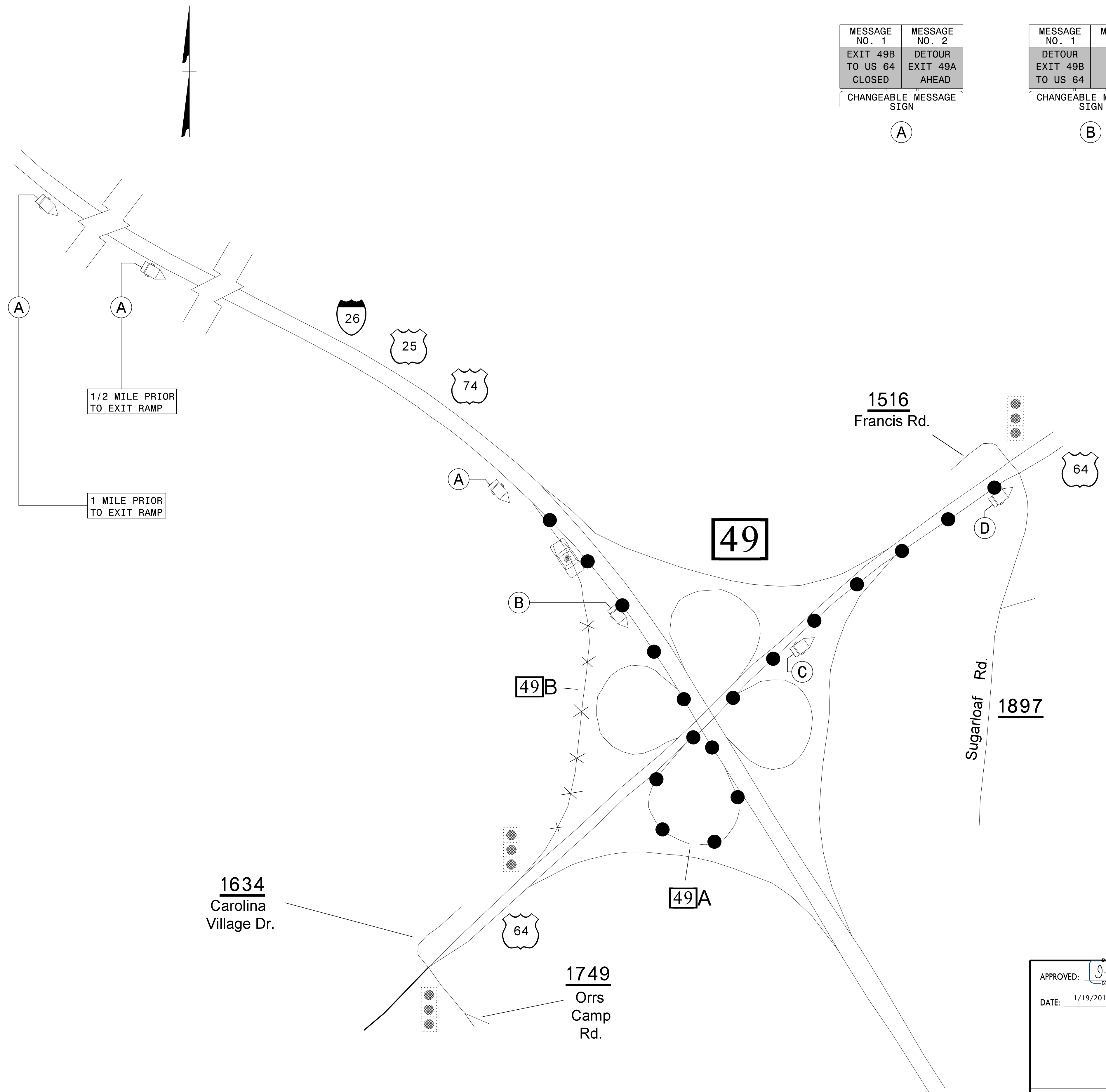


**I-26 WESTBOUND  
EXIT 49A  
RAMP DETOUR**

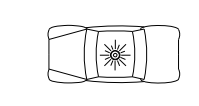
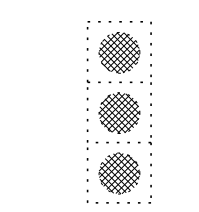
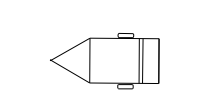
1/19/2016  
 p:\tip\projects-1\5759\TrafficControl\CPN-5759\_TC\_TMP\_3.dgn  
 User:kbroadwell



MESSAGE NO. 1	MESSAGE NO. 2	MESSAGE NO. 1	MESSAGE NO. 2	MESSAGE NO. 1	MESSAGE NO. 2	MESSAGE NO. 1	MESSAGE NO. 2
EXIT 49B TO US 64 CLOSED	DETOUR EXIT 49A AHEAD	DETOUR EXIT 49B NEXT TO US 64	EXIT NEXT RIGHT	DETOUR TO US 64 WEST	U-TURN AT NEXT SIGNAL	DETOUR TO US 64 WEST	U-TURN AT SIGNAL
CHANGEABLE MESSAGE SIGN		CHANGEABLE MESSAGE SIGN		CHANGEABLE MESSAGE SIGN		CHANGEABLE MESSAGE SIGN	
(A)		(B)		(C)		(D)	

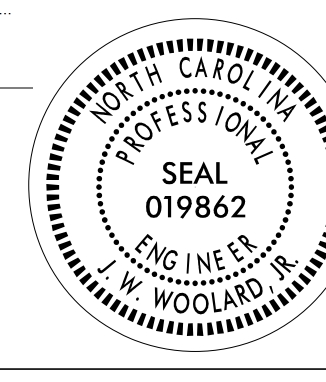


**LEGEND**

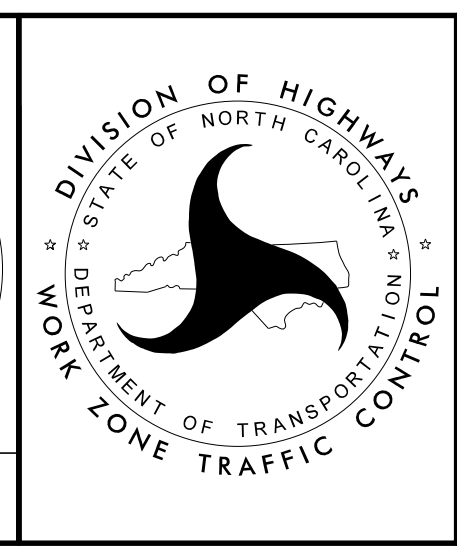
-  — POLICE
-  — EXISTING SIGNAL
-  — CHANGEABLE MESSAGE SIGN

APPROVED: *J. W. Woolard, Jr.*  
079C18E6AD8427

DATE: 1/19/2016

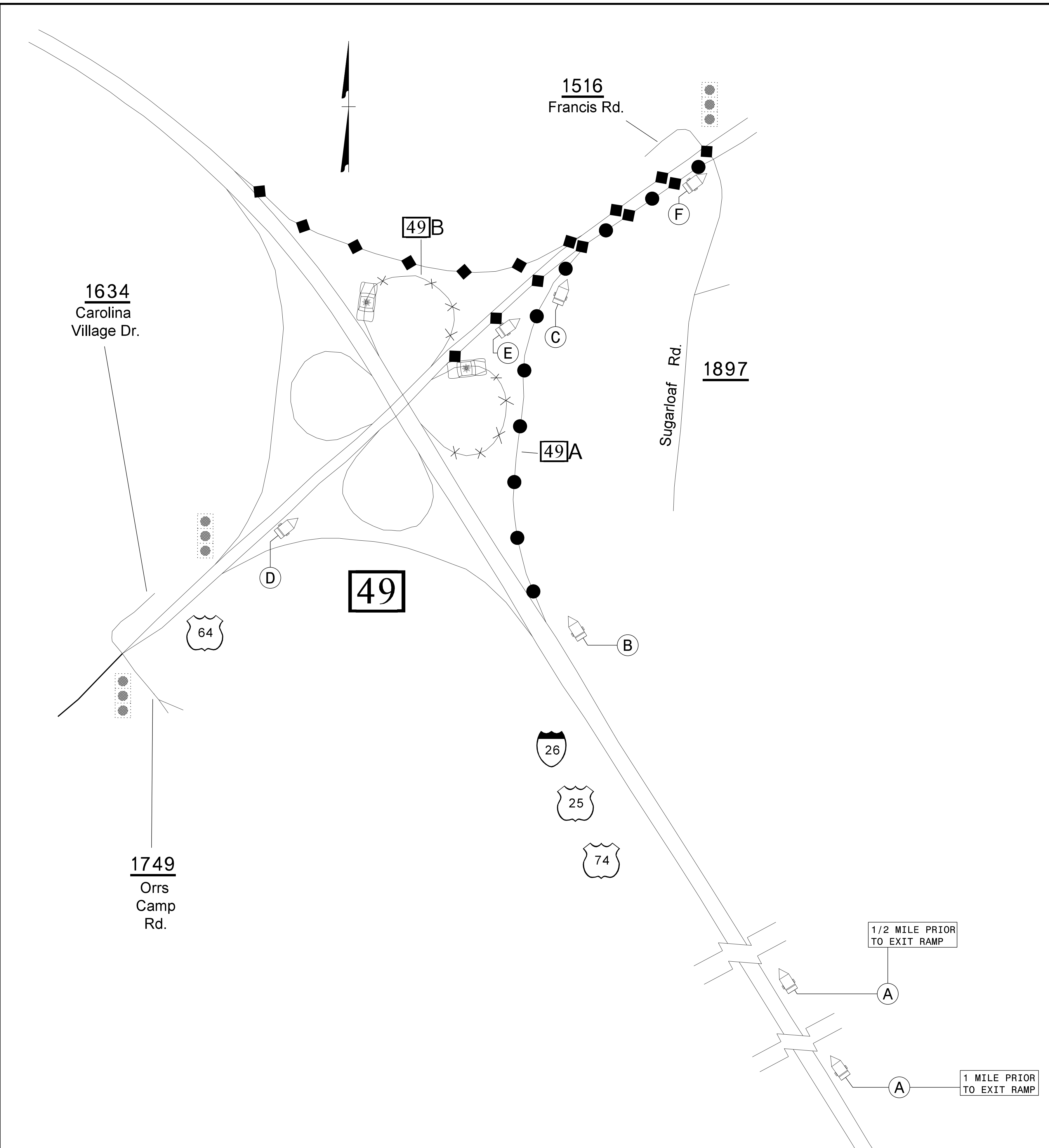


**DOCUMENT NOT CONSIDERED FINAL  
UNLESS ALL SIGNATURES COMPLETED**



**I-26 EASTBOUND  
EXIT 49B  
RAMP DETOUR**

1/19/2016 p:\tip\projects-1\5759\TrafficControl\CPN-5759\_TC\_TMP\_4.dgn User:kbroadwell



MESSAGE NO. 1	MESSAGE NO. 2
EXIT 49B TO US 64 CLOSED	DETOUR EXIT 49A AHEAD

CHANGEABLE MESSAGE SIGN

(A)

MESSAGE NO. 1	MESSAGE NO. 2
DETOUR EXIT 49B TO US 64 WEST	EXIT 49A NEXT RIGHT

CHANGEABLE MESSAGE SIGN

(B)

MESSAGE NO. 1	MESSAGE NO. 2
DETOUR TO US 64 WEST	U-TURN AT NEXT SIGNAL

CHANGEABLE MESSAGE SIGN

(C)

MESSAGE NO. 1	MESSAGE NO. 2
RAMP TO I-26 W CLOSED	DETOUR AHEAD

CHANGEABLE MESSAGE SIGN

(D)

MESSAGE NO. 1	MESSAGE NO. 2
DETOUR TO I-26 WEST	U-TURN AT NEXT SIGNAL

CHANGEABLE MESSAGE SIGN

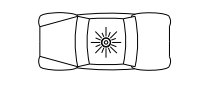
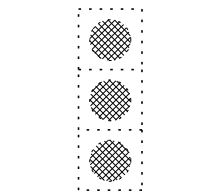
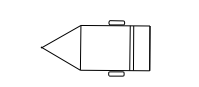
(E)

MESSAGE NO. 1	MESSAGE NO. 2
DETOUR I-26 W US 64 W	U-TURN AT SIGNAL

CHANGEABLE MESSAGE SIGN

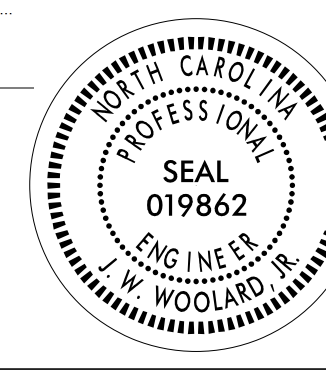
(F)

**LEGEND**

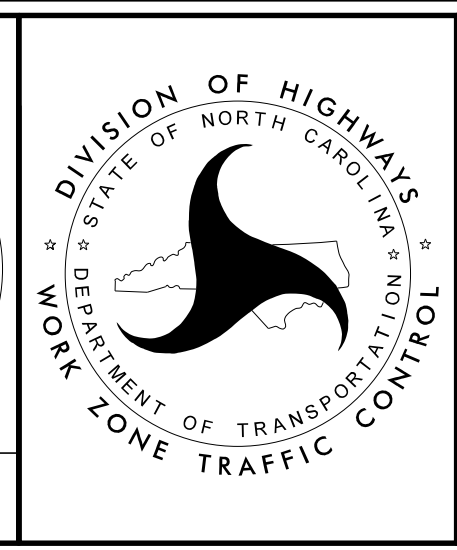
-  POLICE
-  EXISTING SIGNAL
-  CHANGEABLE MESSAGE SIGN

APPROVED: *J. W. Woolard, Jr.*  
679C18E6AD8427

DATE: 1/19/2016



**DOCUMENT NOT CONSIDERED FINAL  
UNLESS ALL SIGNATURES COMPLETED**



**I-26 WESTBOUND  
EXIT 49  
LOOPS DETOUR**

1/19/2016  
 p:\projects\I-5759\TrafficControl\CPN-5759\_TC\_TMP-5.dgn  
 User:kbroadwell

MESSAGE NO. 1	MESSAGE NO. 2
EXIT 49A TO US 64 CLOSED	DETOUR EXIT 49B AHEAD

MESSAGE NO. 1	MESSAGE NO. 2
DETOUR EXIT 49A TO US 64	EXIT NEXT RIGHT

MESSAGE NO. 1	MESSAGE NO. 2
DETOUR TO US 64 EAST	U-TURN AT 2ND SIGNAL

MESSAGE NO. 1	MESSAGE NO. 2
RAMP TO I-26 E CLOSED	DETOUR AHEAD

MESSAGE NO. 1	MESSAGE NO. 2
DETOUR TO I-26 EAST	U-TURN AT 2ND SIGNAL

MESSAGE NO. 1	MESSAGE NO. 2
DETOUR I-26 E US 64 E	U-TURN AT SIGNAL

CHANGEABLE MESSAGE SIGN

CHANGEABLE MESSAGE SIGN

CHANGEABLE MESSAGE SIGN

CHANGEABLE MESSAGE SIGN

CHANGEABLE MESSAGE SIGN

CHANGEABLE MESSAGE SIGN

(A)

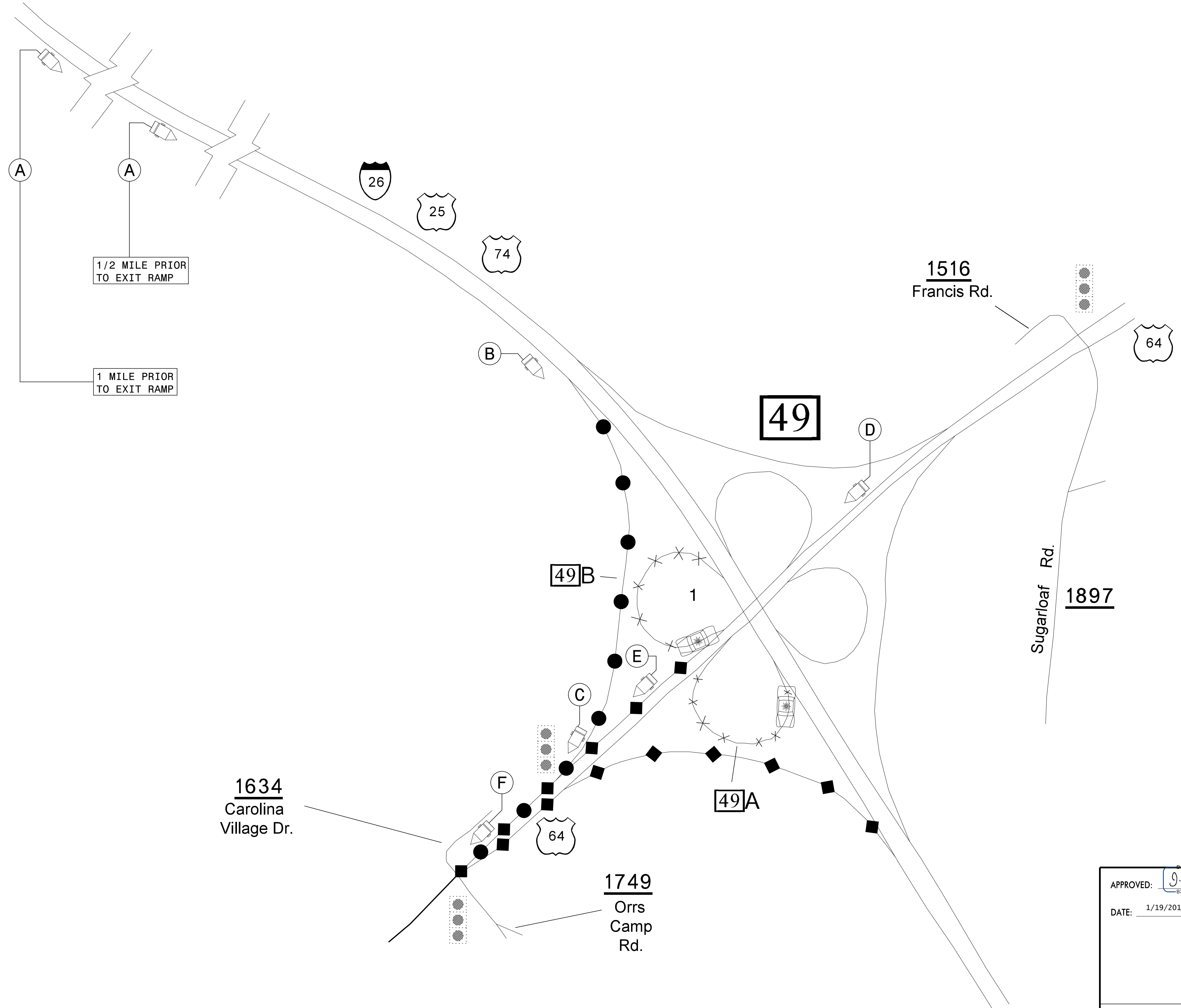
(B)

(C)

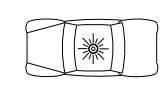
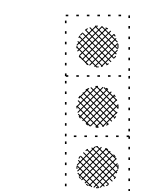
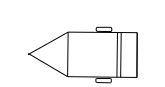
(D)

(E)

(F)




**LEGEND**

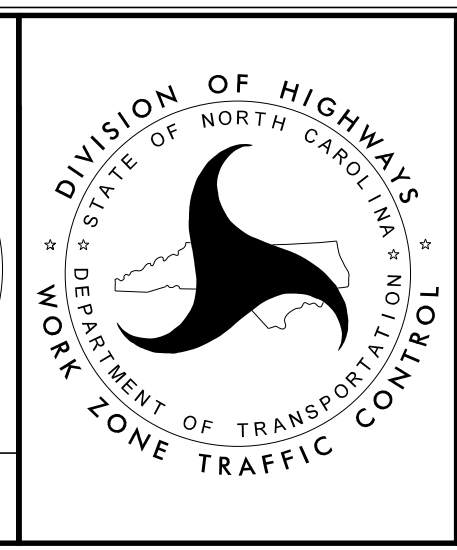
-  — POLICE
-  — EXISTING SIGNAL
-  — CHANGEABLE MESSAGE SIGN

APPROVED: *J. W. Woolard, Jr.*  
079C18E6AD8427

DATE: 1/19/2016



**DOCUMENT NOT CONSIDERED FINAL UNLESS ALL SIGNATURES COMPLETED**



**I-26 EASTBOUND  
 EXIT 49  
 LOOPS DETOUR**

1/19/2016  
 p:\tip\projects-1\5759\TrafficControl\CPN-5759\_TC\_TMP-6.dgn  
 User:kbroadwell