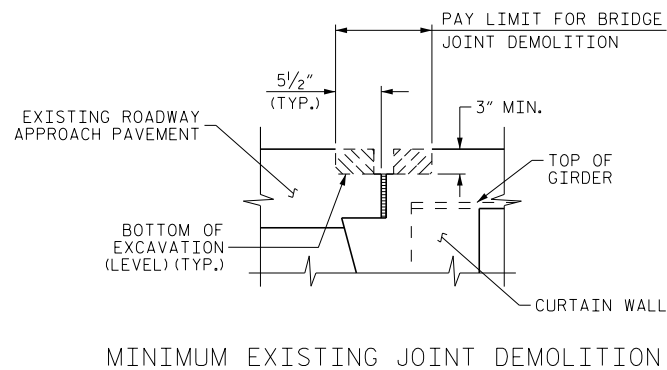
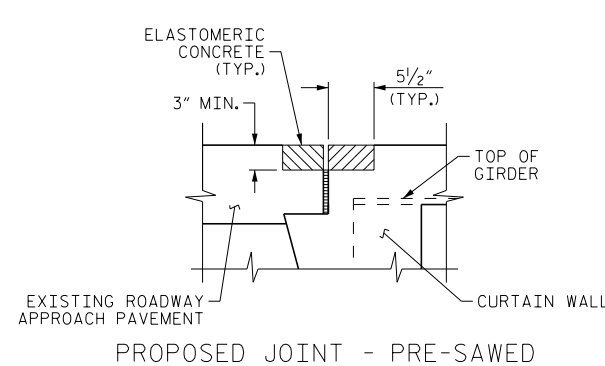


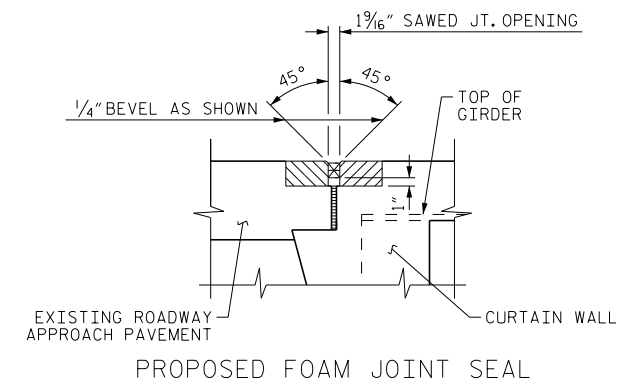
EXISTING JOINT



MINIMUM EXISTING JOINT DEMOLITION



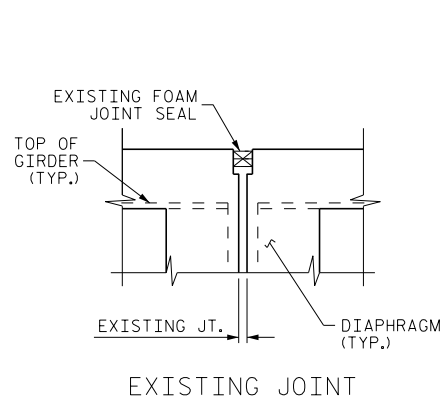
PROPOSED JOINT - PRE-SAWED



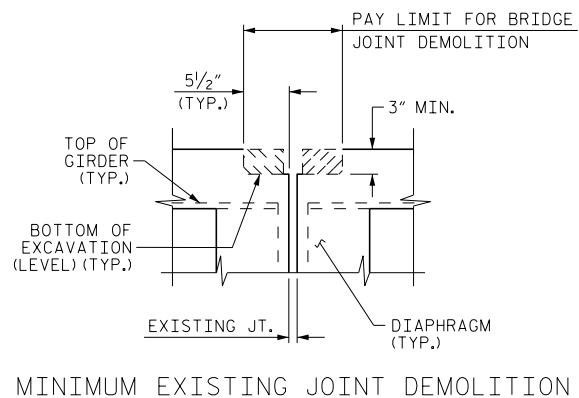
PROPOSED FOAM JOINT SEAL

SECTION A-A

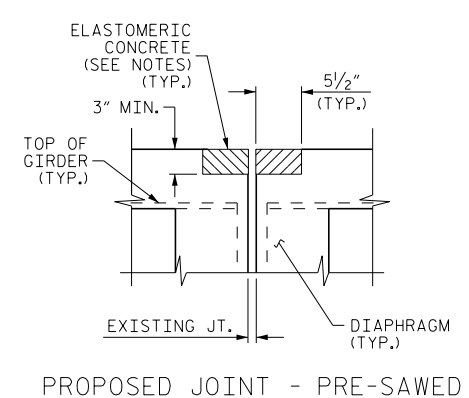
NOTE: RETAIN ALL EXISTING REINFORCING STEEL. CLEAN AND REPAIR AS REQ'D.



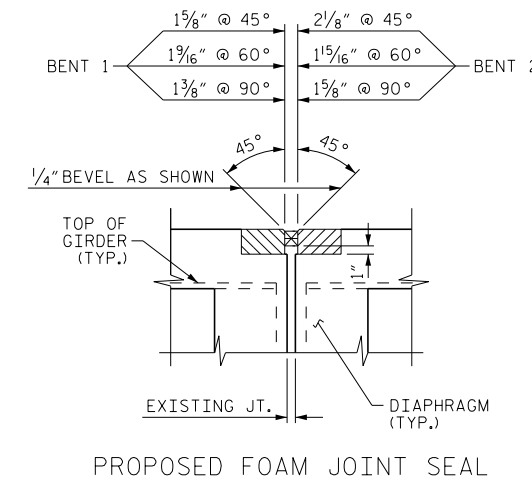
EXISTING JOINT



MINIMUM EXISTING JOINT DEMOLITION



PROPOSED JOINT - PRE-SAWED



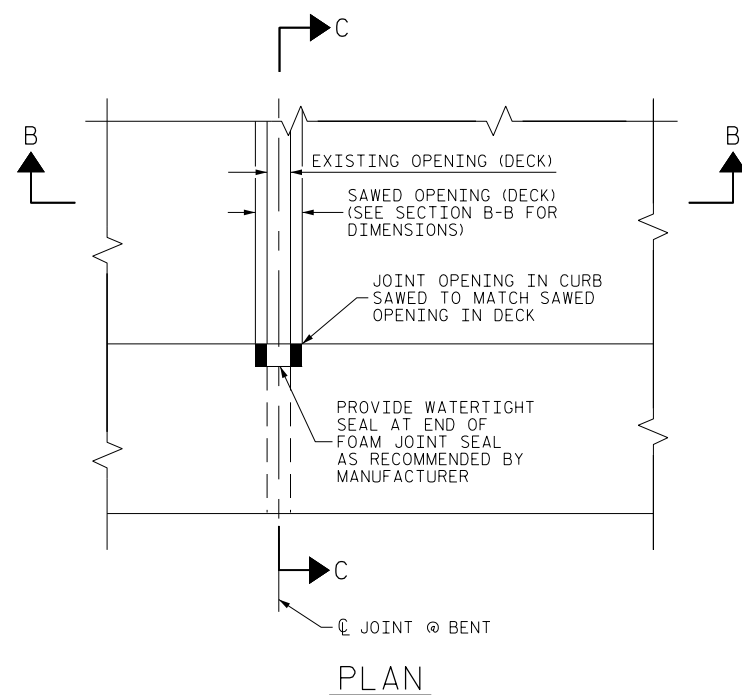
PROPOSED FOAM JOINT SEAL

SECTION B-B

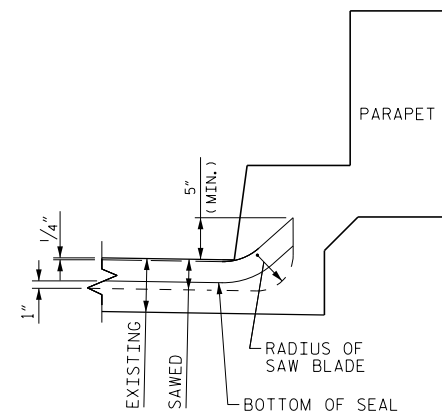
IF BRIDGE JOINT DEMOLITION EXCAVATION EXTENDS MORE THAN 2" BELOW THE BOTTOM OF THE PLANNED ELASTOMERIC CONCRETE HEADER, AS SHOWN, APPROVED REPAIR CONCRETE SHALL BE PLACED IN THE EXCAVATED AREA TO THE ELEVATION AT THE BOTTOM OF THE ELASTOMERIC CONCRETE.
DEMOLISH BRIDGE JOINT AREA TO THE NECESSARY DEPTH SUCH THAT ELASTOMERIC CONCRETE SHALL BE FOUNDED ON CONCRETE OR REPAIR CONCRETE SUBSTRATE.

NOTES

- THE LOCATIONS AND LIMITS OF WORK FOR BRIDGE JOINT DEMOLITION AND JOINT REPLACEMENT WILL BE DETERMINED IN THE FIELD BY THE ENGINEER.
- FOR BRIDGE JOINT DEMOLITION, SEE SPECIAL PROVISIONS.
- FOR ELASTOMERIC CONCRETE, SEE SPECIAL PROVISIONS.
- FOR FOAM JOINT SEALS, SEE SPECIAL PROVISIONS.
- THE INSTALLED FOAM JOINT SEALS SHALL BE WATERTIGHT.
- NOMINAL UNCOMPRESSED SEAL WIDTH OF FOAM JOINT SEALS SHALL BE 2" AT BENT 1 AND THE END BENTS.
- NOMINAL UNCOMPRESSED SEAL WIDTH OF FOAM JOINT SEALS SHALL BE 2 1/4" AT BENT 2.
- THE CONTRACTOR WILL NOT BE PERMITTED TO FORM THE JOINT FOR THE FOAM JOINT SEAL IN LIEU OF SAWING THE JOINT.
- TOP OF ELASTOMERIC CONCRETE SHALL MATCH THE TOP OF THE FINAL DECK RIDING SURFACE.



PLAN



SECTION C-C

FOAM JOINT SEAL SHALL BE FACTORY FORMED OR CUT, HEAT WELDED AND TURNED UP PARALLEL TO SLOPED FACE OF CURB.

JOINT REPLACEMENT LOCATIONS AND ELASTOMERIC CONCRETE

BRIDGE NO.	LOCATION	ELASTOMERIC CONCRETE
		CU. FT.
211	END BENT 1	6.4
211	BENT 1	6.4
211	BENT 2	6.4
211	END BENT 2	6.4
212	END BENT 1	6.4
212	BENT 1	6.4
212	BENT 2	6.4
212	END BENT 2	6.4
* TOTAL		51.2

* BASED ON THE MINIMUM BLOCKOUT SHOWN.

PROJECT NO. I-5759
HENDERSON COUNTY
BRIDGE NO. 211 & 212

DocuSigned by:
John A. Yannaccone
7BC36E9CEE884EC
STATE OF NORTH CAROLINA
PROFESSIONAL SEAL
32492
ENGINEER
JOHN A. YANNACCONE

1/25/2016

STATE OF NORTH CAROLINA
DEPARTMENT OF TRANSPORTATION
RALEIGH

JOINT DETAILS

DRAWN BY: R. BRANNON DATE: 10/15
CHECKED BY: J. YANNACCONE DATE: 11/15

25-JAN-2016 15:00
R:\S\Structures\Final Drawings\440211.212.SD.JS.dgn
jvannaccone

REVISIONS						SHEET NO. S-4
NO.	BY:	DATE:	NO.	BY:	DATE:	
1			3			TOTAL SHEETS 4
2			4			

DOCUMENT NOT CONSIDERED FINAL UNLESS ALL SIGNATURES COMPLETED