

MESSAGE NO. 1	MESSAGE NO. 2
RAMP TO I-26 E CLOSED	DETOUR AHEAD
CHANGEABLE MESSAGE SIGN	

(A)

MESSAGE NO. 1	MESSAGE NO. 2
DETOUR I-26 EAST	RIGHT AT SIGNAL
CHANGEABLE MESSAGE SIGN	

(B)

MESSAGE NO. 1	MESSAGE NO. 2
RAMP TO I-26 E CLOSED	U-TURN AT SIGNAL
CHANGEABLE MESSAGE SIGN	

(C)

MESSAGE NO. 1	MESSAGE NO. 2
DETOUR I-26 EAST	LEFT AT SIGNAL
CHANGEABLE MESSAGE SIGN	

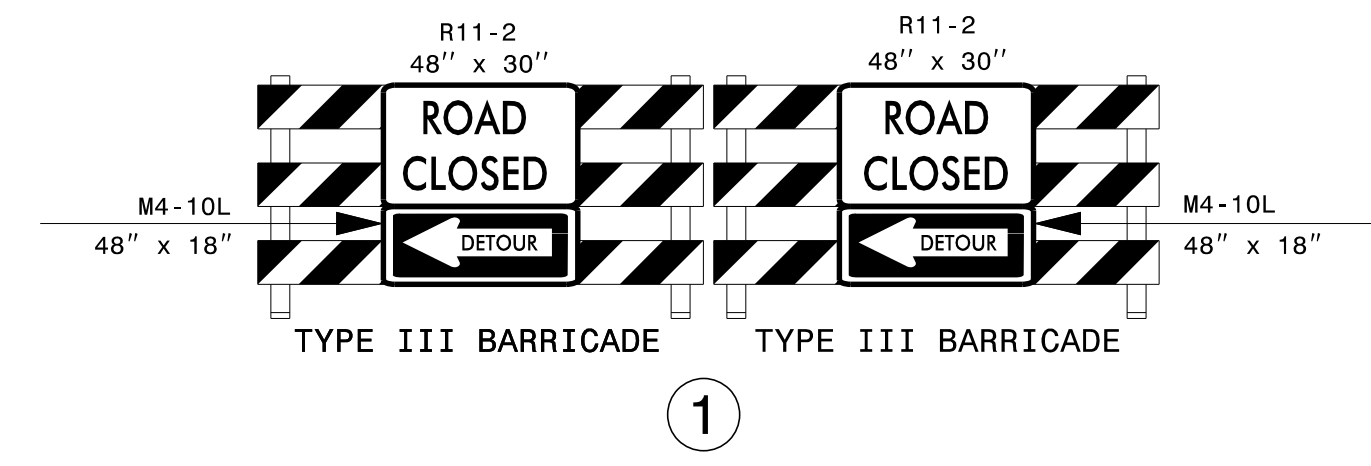
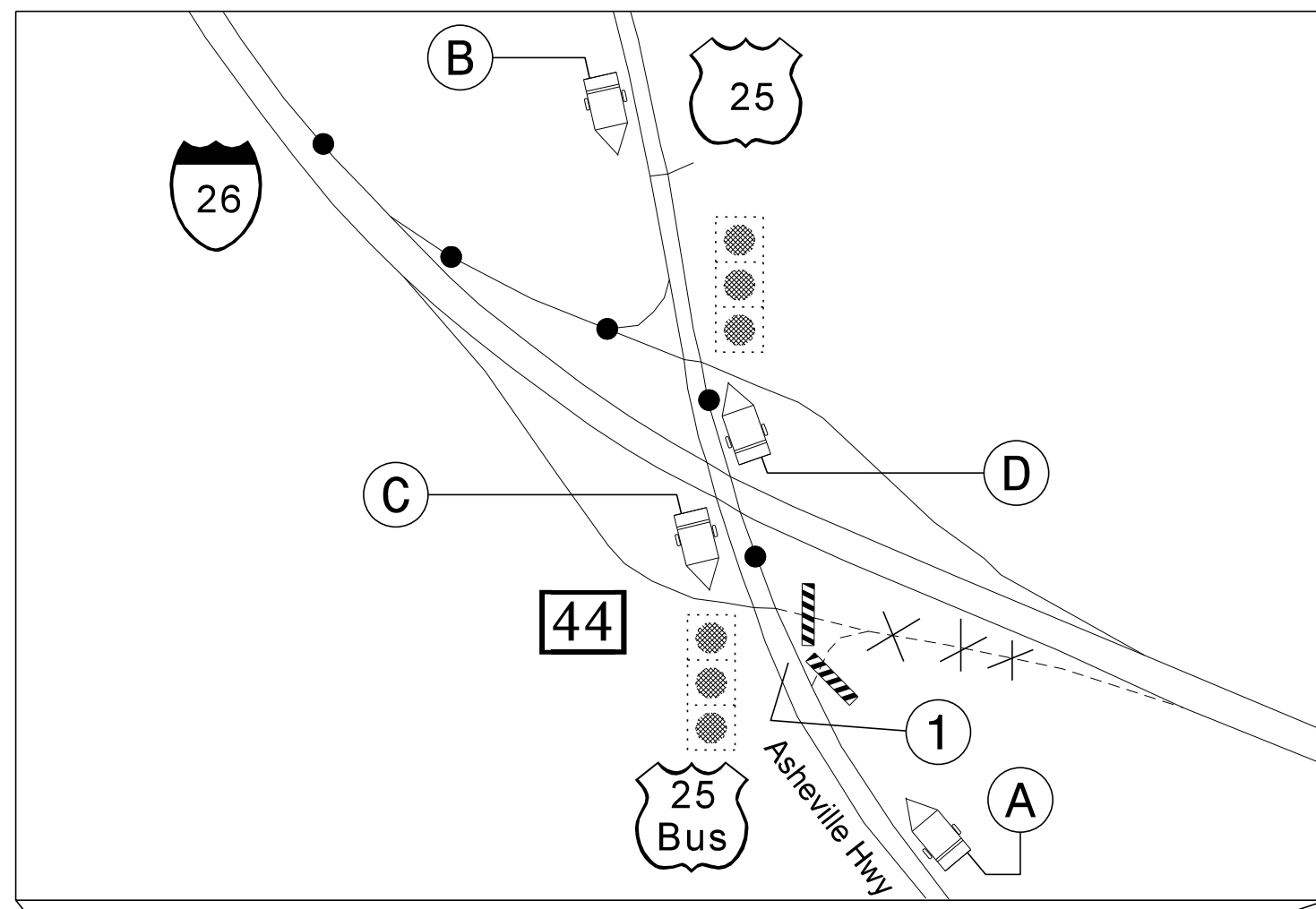
(D)

MESSAGE NO. 1	MESSAGE NO. 2
DETOUR I-26 E 1 MILE	USE EXIT 40 1 MILE
CHANGEABLE MESSAGE SIGN	

(E)

MESSAGE NO. 1	MESSAGE NO. 2
DETOUR I-26 E	EXIT 40 NEXT RIGHT
CHANGEABLE MESSAGE SIGN	

(F)

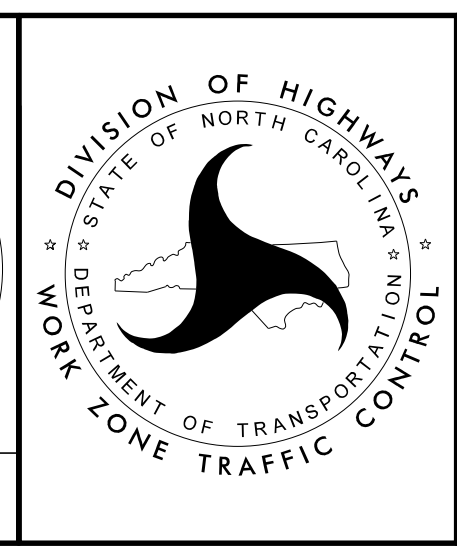


1/19/2016
 p:\tip\projects-1\5758\traffic\trafficcontrol\tp\I-5758_TC_TMP_2.dgn
 User:kbroadwell

APPROVED: *J. W. Woolard, Jr.*
679C18E6AD8427

DATE: 1/19/2016

**DOCUMENT NOT CONSIDERED FINAL
UNLESS ALL SIGNATURES COMPLETED**



**I-26 EASTBOUND
 EXIT 44
 ENTRANCE RAMP
 DETOUR**