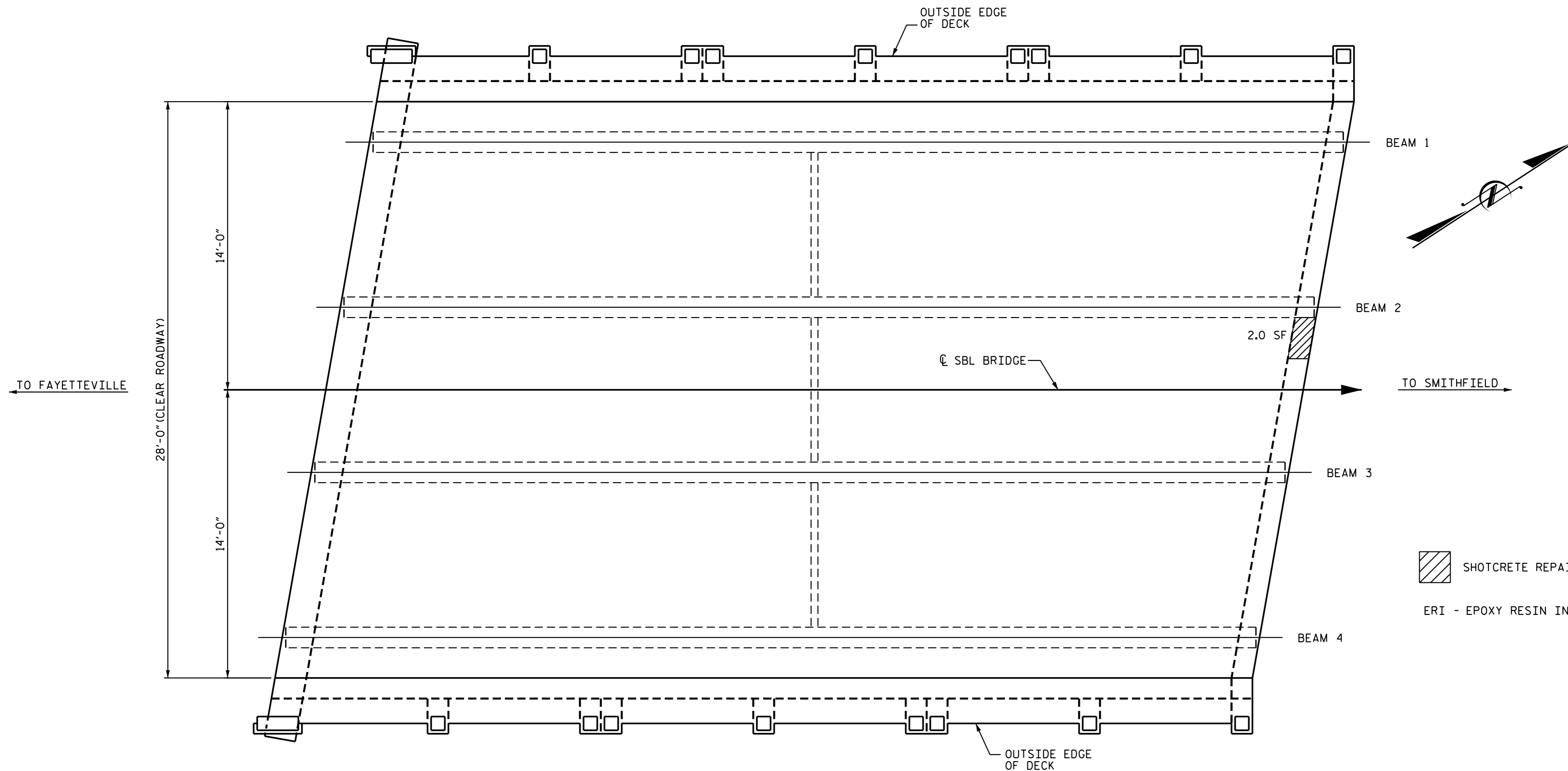


NOTES:

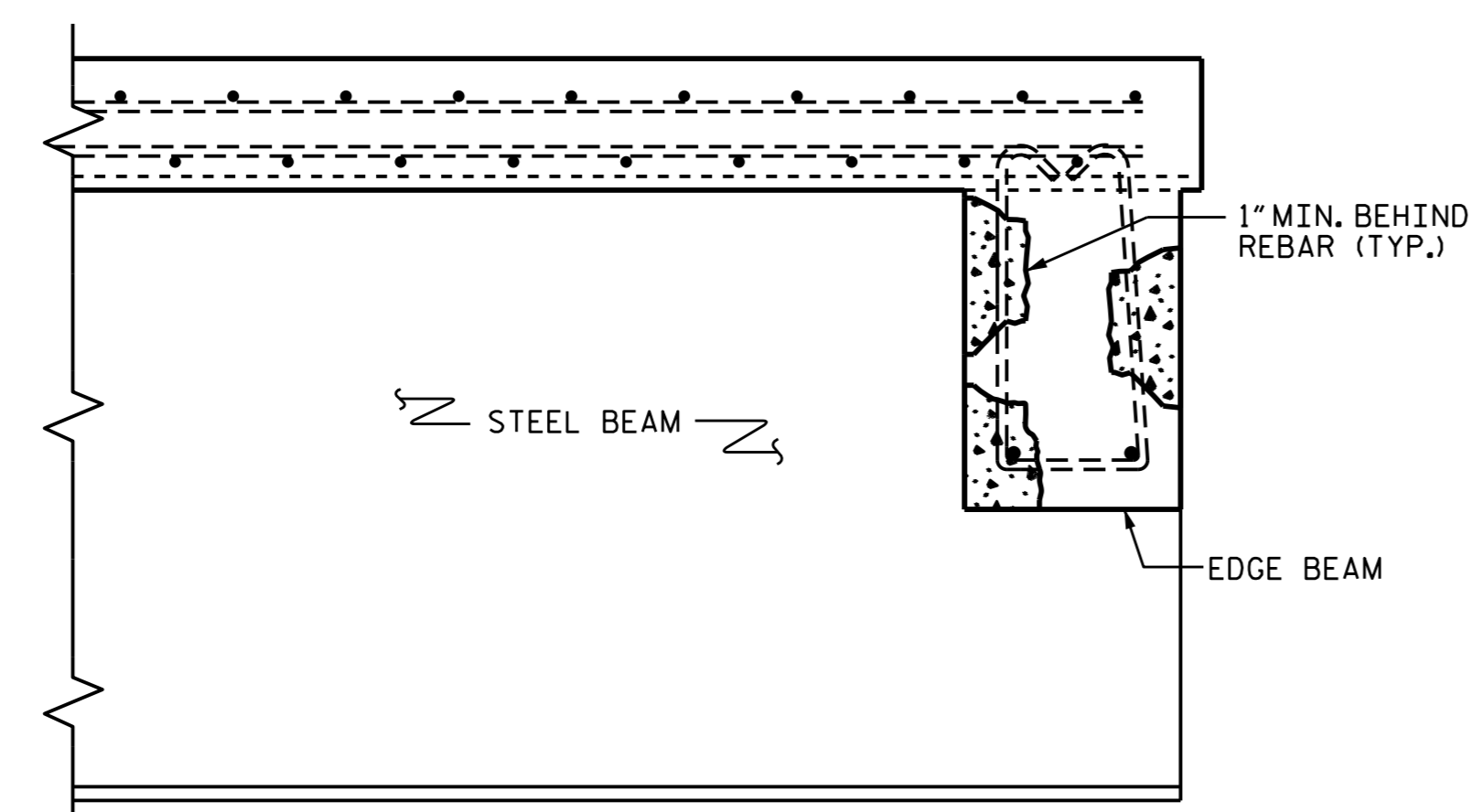
REPAIR LOCATIONS AND ESTIMATE OF QUANTITIES ARE GIVEN WITH THE BEST INFORMATION AVAILABLE. IF ADDITIONAL REPAIRS NOT SHOWN ON THE DRAWINGS ARE DEEMED NECESSARY BY THE ENGINEER, THE ENGINEER SHALL NOTE ON THE DRAWINGS THE APPROXIMATE LOCATION AND DESCRIPTION OF THE REPAIRS AND ADJUST THE ACTUAL QUANTITIES ENTERED INTO THE REPAIR QUANTITY TABLE.

REPAIR CONCRETE BENT DIAPHRAGMS AS DIRECTED BY THE ENGINEER.



SHOTCRETE REPAIR
 ERI - EPOXY RESIN INJECTION

PLAN OF SPAN A
UNDERSIDE



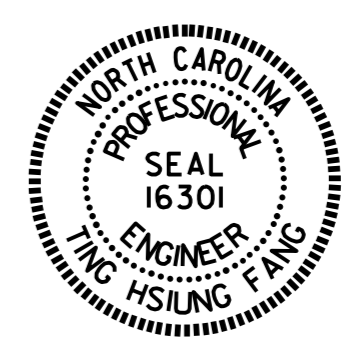
SHOTCRETE REPAIR DETAILS

IF REMOVAL OF UNSOUND CONCRETE RESULTS IN EXPOSING MORE THAN HALF THE DEPTH OF A REINFORCING BAR, REMOVE ADDITIONAL CONCRETE TO 1" BEHIND THE BAR WITHOUT DAMAGE TO REINFORCING BAR.

REPAIR QUANTITY TABLE				
UNDERSIDE OF DECK REPAIRS				
SHOTCRETE REPAIRS	ESTIMATE		ACTUAL	
	AREA SF	VOLUME CF	AREA SF	VOLUME CF
BENT DIAPHRAGMS	2.0	0.5		
	ESTIMATE		ACTUAL	
EPOXY RESIN INJECTION				

VALUES IN CHARTS REPRESENT ESTIMATED UNDERSIDE OF DECK REPAIR TOTALS AFTER REMOVAL OF UNSOUND CONCRETE, MIN. OF 1" BEHIND REBAR AND MIN. 1" CLEAR TO SAWCUT. SEE REPAIR DETAILS.

PROJECT NO. I-5788
HARNETT COUNTY
 BRIDGE NO.: 77



DocuSigned by:
Ting H. Fang
1/28/2016

STATE OF NORTH CAROLINA
DEPARTMENT OF TRANSPORTATION
RALEIGH
SUPERSTRUCTURE REPAIR
SPAN A
SBL

REVISIONS						SHEET NO. S-64 TOTAL SHEETS 72
NO.	BY:	DATE:	NO.	BY:	DATE:	
1			3			
2			4			

DRAWN BY : A. SORSENGIH DATE : 11/2/15
 CHECKED BY : S. B. WILLIAMS DATE : 11/5/15