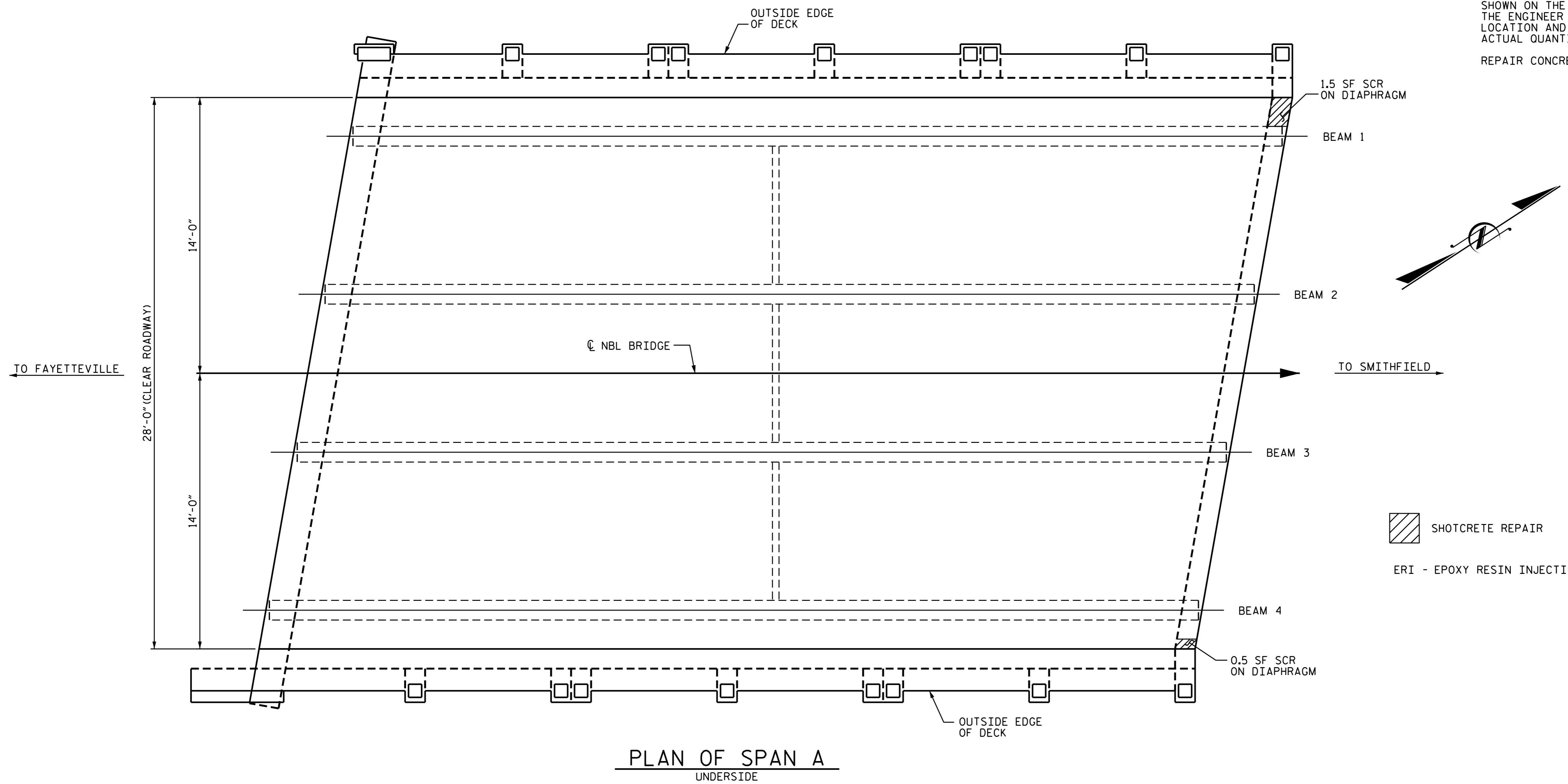


**NOTES:**

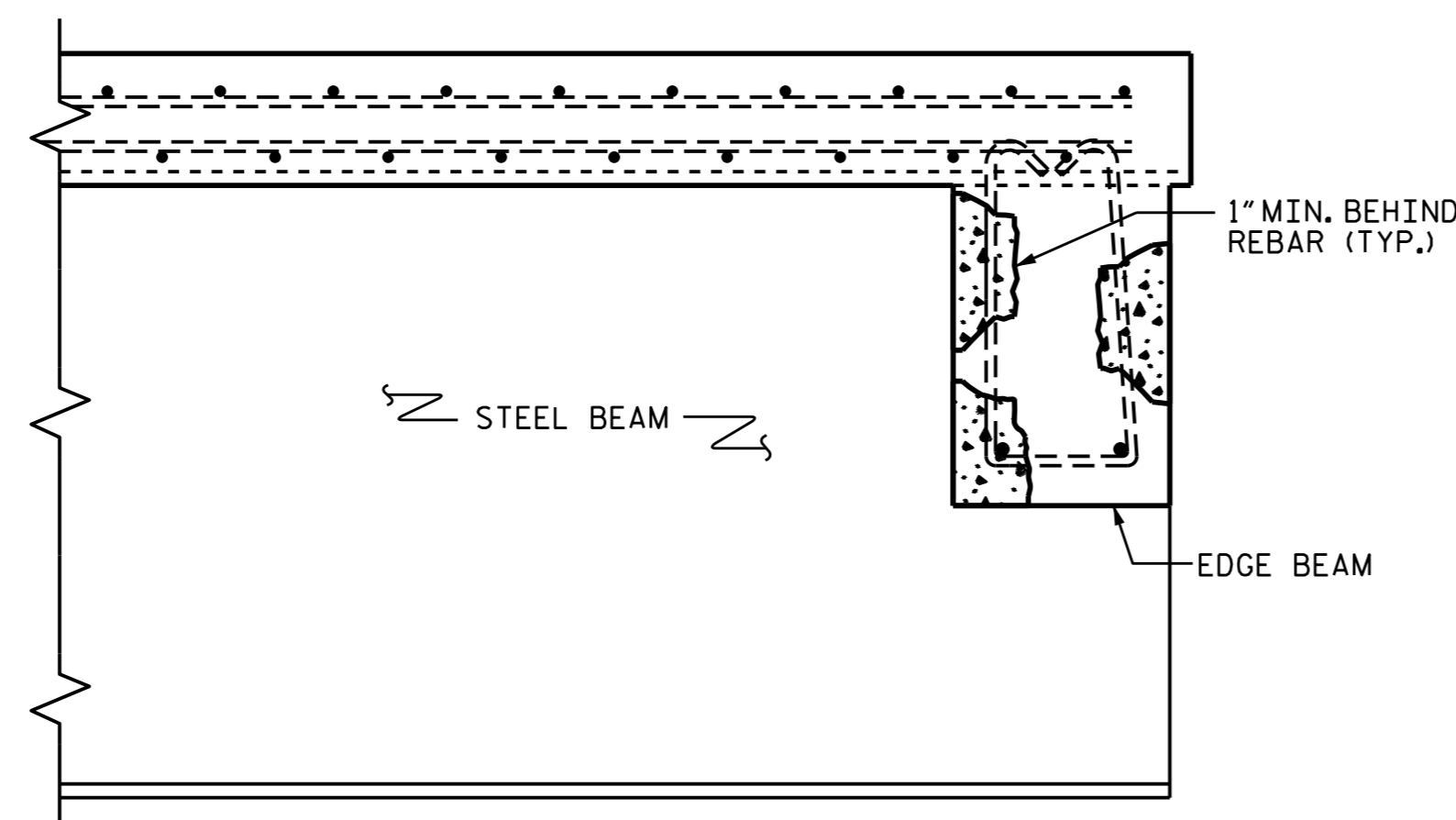
REPAIR LOCATIONS AND ESTIMATE OF QUANTITIES ARE GIVEN WITH THE BEST INFORMATION AVAILABLE. IF ADDITIONAL REPAIRS NOT SHOWN ON THE DRAWINGS ARE DEEMED NECESSARY BY THE ENGINEER, THE ENGINEER SHALL NOTE ON THE DRAWINGS THE APPROXIMATE LOCATION AND DESCRIPTION OF THE REPAIRS AND ADJUST THE ACTUAL QUANTITIES ENTERED INTO THE REPAIR QUANTITY TABLE.

REPAIR CONCRETE BENT DIAPHRAGMS AS DIRECTED BY THE ENGINEER.



SHOTCRETE REPAIR  
 ERI - EPOXY RESIN INJECTION

**PLAN OF SPAN A**  
UNDERSIDE



**SHOTCRETE REPAIR DETAILS**

IF REMOVAL OF UNSOUND CONCRETE RESULTS IN EXPOSING MORE THAN HALF THE DEPTH OF A REINFORCING BAR, REMOVE ADDITIONAL CONCRETE TO 1" BEHIND THE BAR WITHOUT DAMAGE TO REINFORCING BAR.

REPAIR QUANTITY TABLE				
UNDERSIDE OF DECK REPAIRS				
REPAIR TYPE	ESTIMATE		ACTUAL	
	AREA SF	VOLUME CF	AREA SF	VOLUME CF
SHOTCRETE REPAIRS				
BENT DIAPHRAGMS	2.0	0.5		
EPOXY RESIN INJECTION				
	ESTIMATE		ACTUAL	

VALUES IN CHARTS REPRESENT ESTIMATED UNDERSIDE OF DECK REPAIR TOTALS AFTER REMOVAL OF UNSOUND CONCRETE, MIN. OF 1" BEHIND REBAR AND MIN. 1" CLEAR TO SAWCUT. SEE REPAIR DETAILS.

PROJECT NO. I-5788  
 HARNETT COUNTY  
 BRIDGE NO.: 73

SHEET 1 OF 4



DocuSigned by:  
Ting Hsiung Fang  
E7208040907435...

1/28/2016

STATE OF NORTH CAROLINA  
 DEPARTMENT OF TRANSPORTATION  
 RALEIGH

**SUPERSTRUCTURE REPAIR**  
 NBL  
 SPAN A

REVISIONS						SHEET NO.
NO.	BY:	DATE:	NO.	BY:	DATE:	S-54
1			3			TOTAL SHEETS
2			4			72

DRAWN BY : A. SORSENGINH DATE : 11/2/15  
 CHECKED BY : S. B. WILLIAMS DATE : 11/4/15