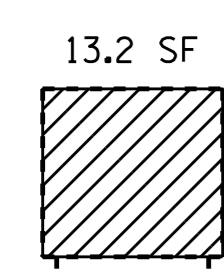
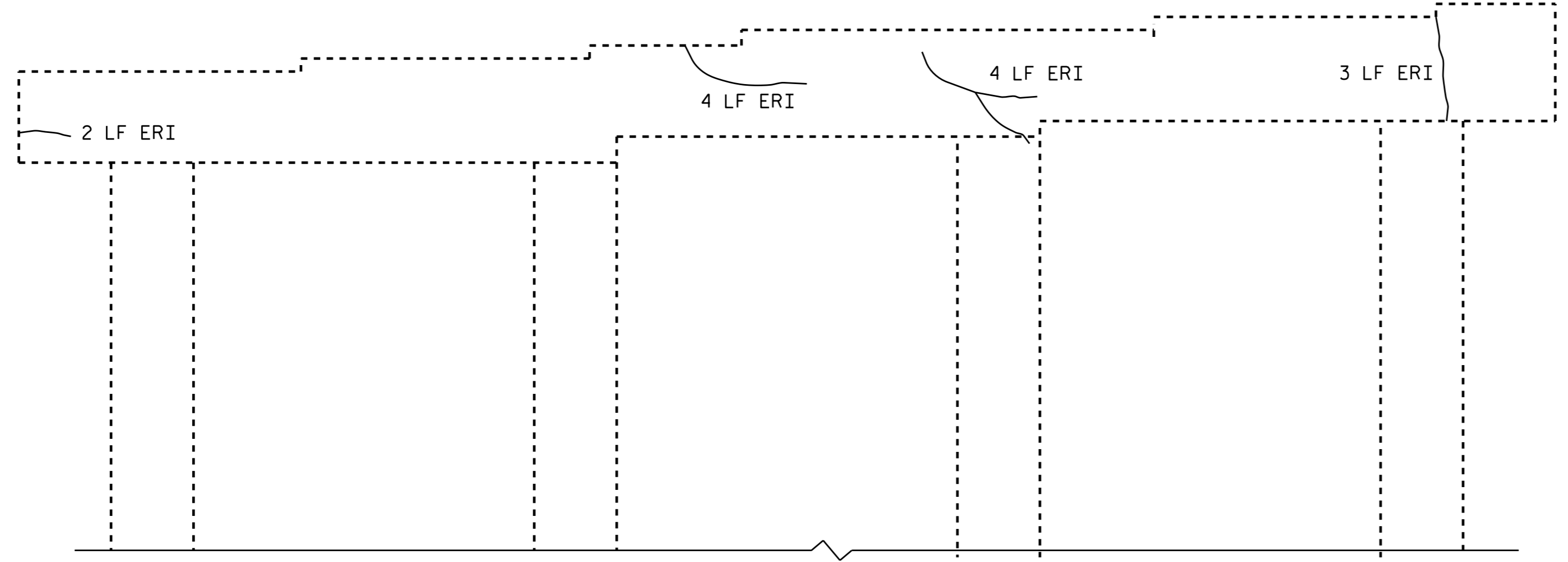


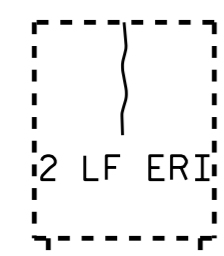
TOP OF CAP



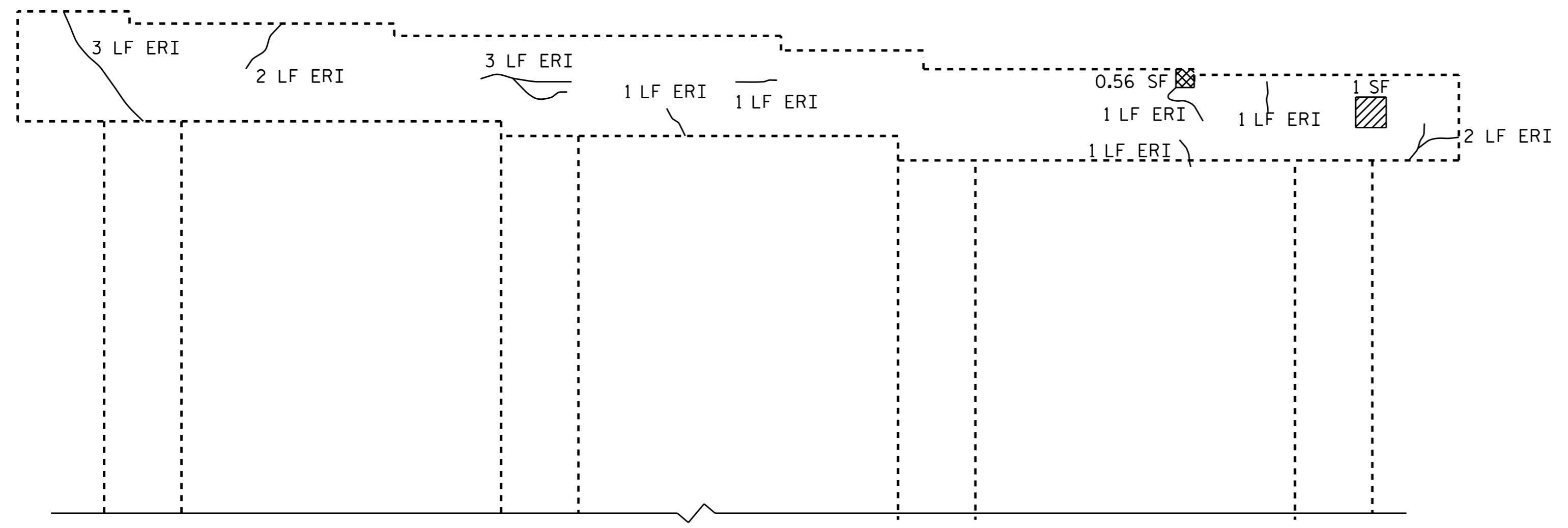
END VIEW
NORTH FACE



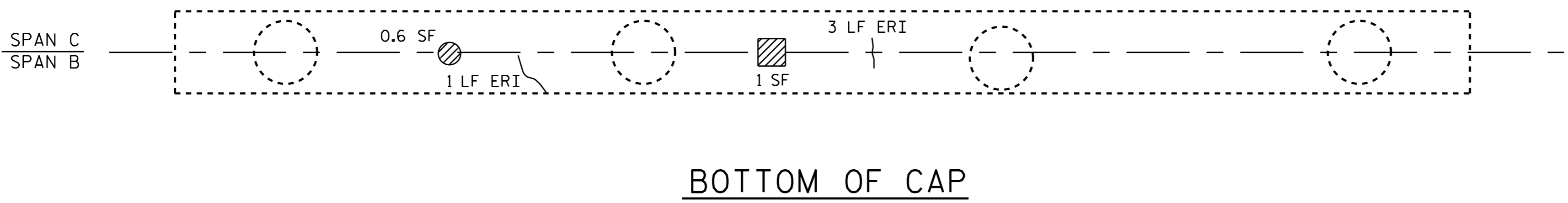
ELEVATION
WEST FACE



END VIEW
SOUTH FACE



ELEVATION
EAST FACE



BOTTOM OF CAP

NOTES:
REPAIR LOCATIONS AND ESTIMATE OF QUANTITIES ARE GIVEN WITH THE BEST INFORMATION AVAILABLE. IF ADDITIONAL REPAIRS NOT SHOWN ON THE DRAWINGS ARE DEEMED NECESSARY BY THE ENGINEER, THE ENGINEER SHALL NOTE ON THE DRAWINGS THE APPROXIMATE LOCATION AND DESCRIPTION OF THE REPAIRS AND ADJUST THE ACTUAL QUANTITIES ENTERED INTO THE REPAIR QUANTITY TABLE.

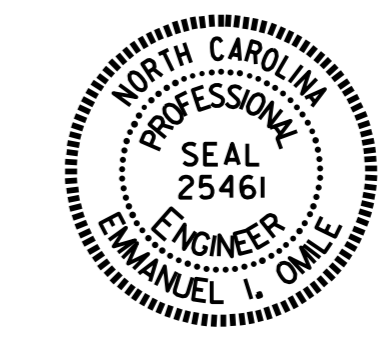
FOR STRUCTURE REPAIRS, SEE "TYPICAL CAP AND COLUMN REPAIR DETAILS" SHEET S-72.
FOR CONCRETE REPAIRS, SEE SPECIAL PROVISIONS.
FOR SHOTCRETE REPAIRS, SEE SPECIAL PROVISIONS.
FOR EPOXY RESIN INJECTION, SEE SPECIAL PROVISIONS.
EPOXY COATING SHALL BE APPLIED TO THE TOP FACE OF THE BENT CAP.
FOR EPOXY COATING, SEE SPECIAL PROVISIONS.

- CONCRETE REPAIR
- SHOTCRETE REPAIR
- ERI - EPOXY RESIN INJECTION

REPAIR QUANTITY TABLE				
REPAIRS BENT 2	QUANTITIES			
	ESTIMATE		ACTUAL	
SHOTCRETE REPAIRS	AREA SF.	VOLUME CF.	AREA SF.	VOLUME CF.
CAP (VERTICAL FACE)	14.2	3.6		
CAP (HORIZONTAL FACE)				
COLUMN (VERTICAL FACE)				
CONCRETE REPAIRS	1.6	0.4		
EPOXY RESIN INJECTION		LN. FT.		LN. FT.
CAP		45.5		
COLUMN				
EPOXY COATING		SQ. FT.		SQ. FT.
CAP		196.5		

VALUES IN CHART REPRESENT ESTIMATED REPAIR TOTALS AFTER REMOVAL OF UNSOUND CONCRETE, MIN. OF 1" BEHIND REBAR AND MIN. 1" CL TO SAWCUT. SEE REPAIR DETAILS.

PROJECT NO. I-5788
CUMBERLAND COUNTY
BRIDGE NO. 142



STATE OF NORTH CAROLINA
DEPARTMENT OF TRANSPORTATION
RALEIGH
SUBSTRUCTURE
REPAIR
BENT 2

REVISIONS						SHEET NO. S-14
NO.	BY:	DATE:	NO.	BY:	DATE:	
1			3			TOTAL SHEETS 72
2			4			

DRAWN BY : A. SORSENGINH DATE : 10/26/15
CHECKED BY : S. B. WILLIAMS DATE : 10/30/15