

# TEMPORARY TRAFFIC CONTROL PHASING

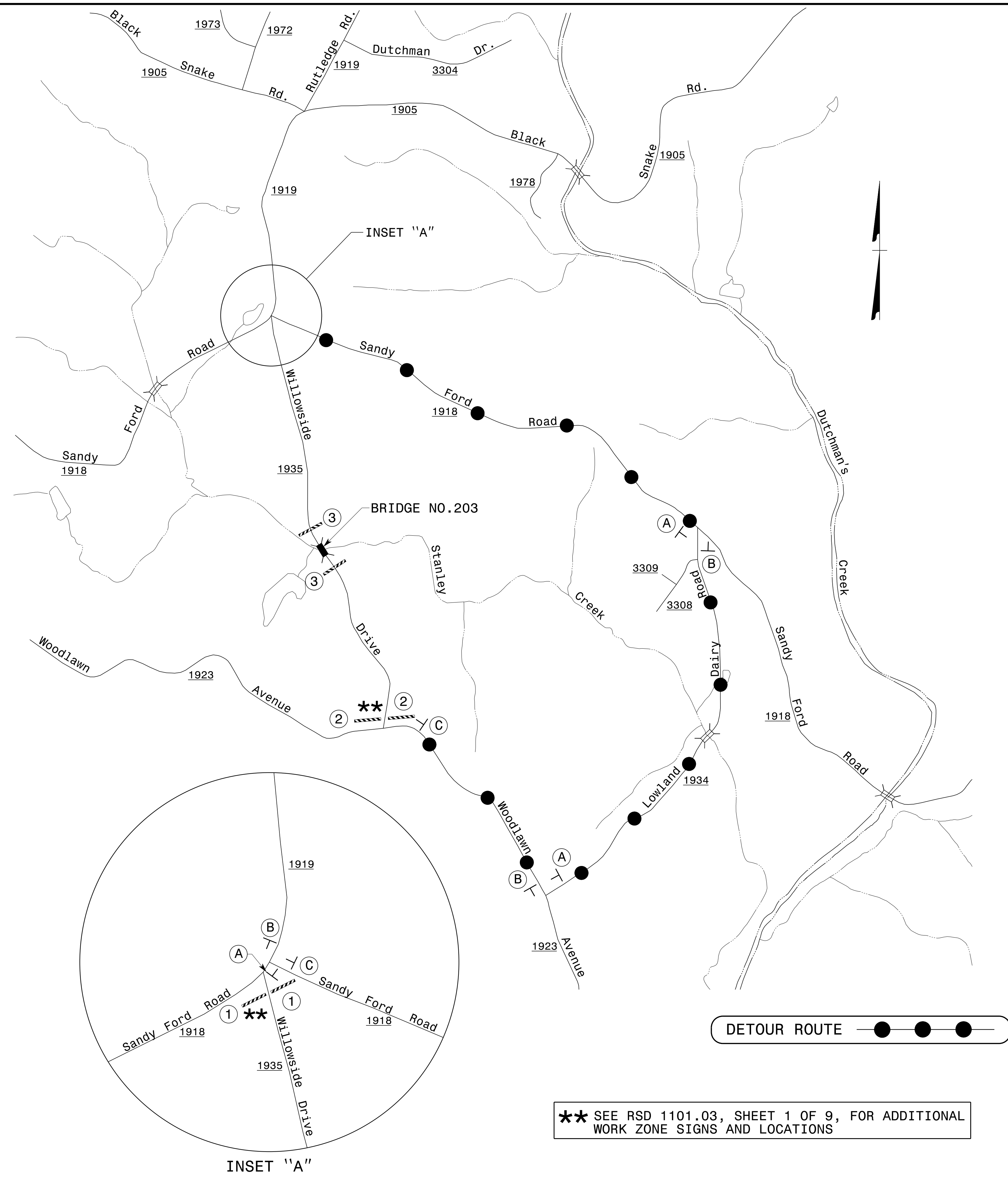
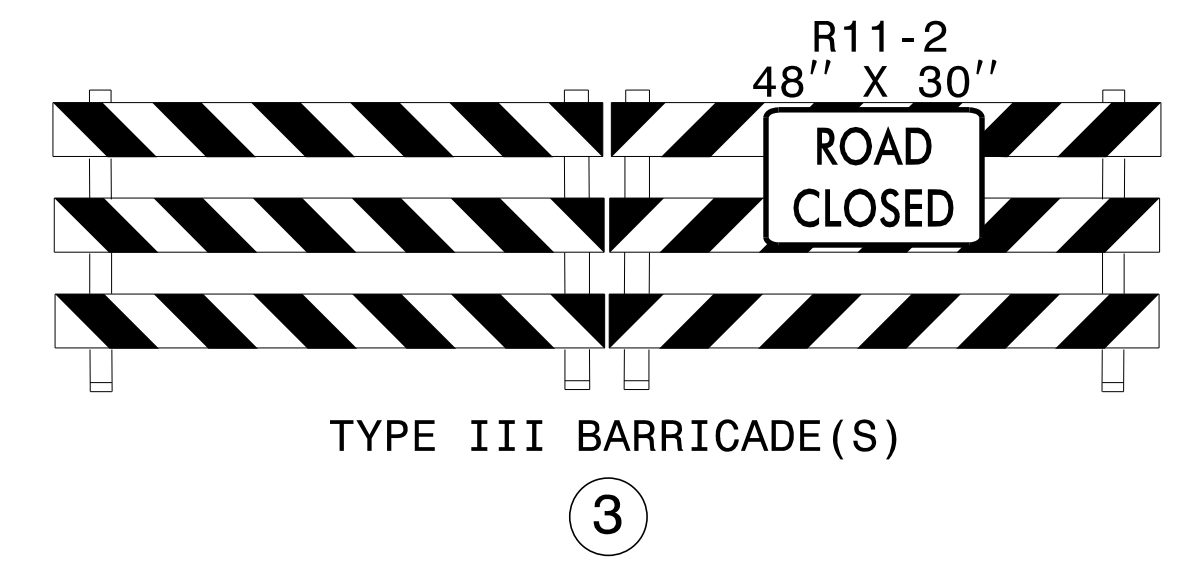
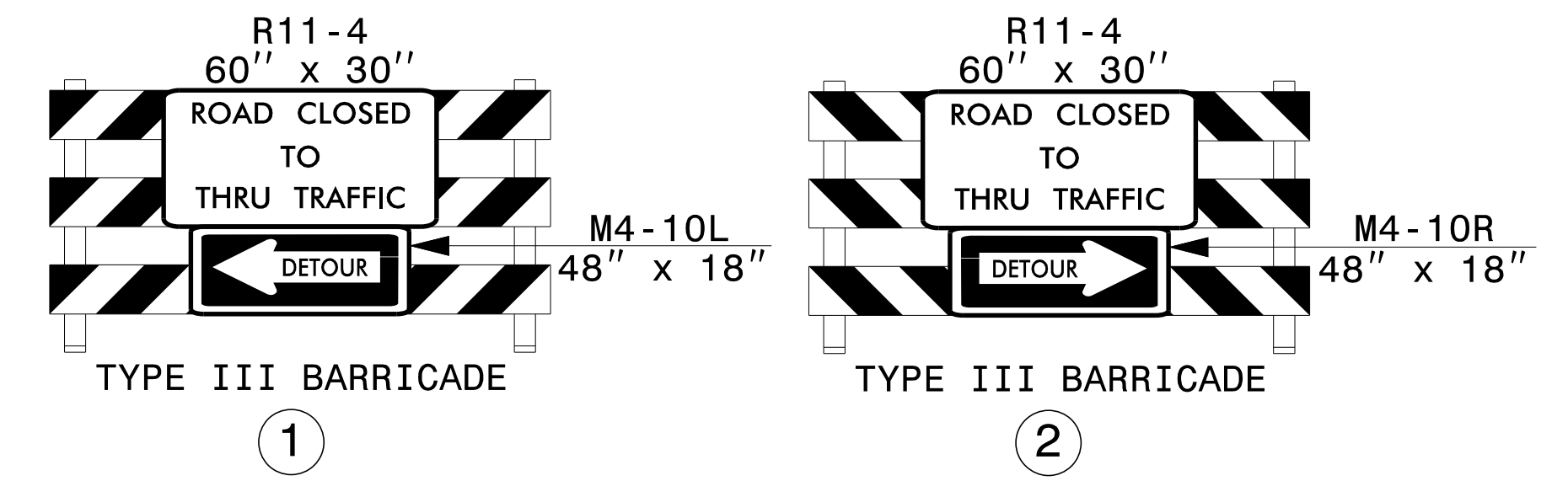
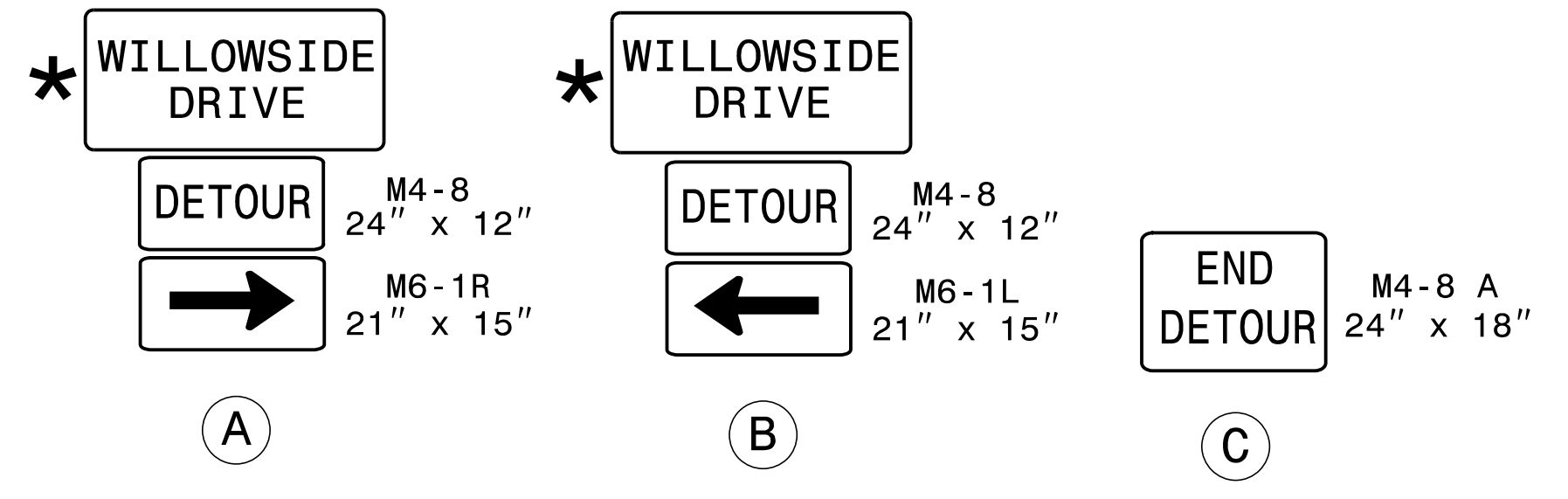
## PHASE I

- STEP 1. INSTALL ALL OFF-SITE DETOUR SIGNING (SEE TMP-3).
- USING RSD 1101.03 (SHEET 1 OF 9), CLOSE SR 1935 (WILLOWSIDE DRIVE) FROM STA. 13+50+/- -L- TO STA. 17+65+/- -L-.

## PHASE II

- STEP 1. AWAY FROM TRAFFIC, REMOVE EXISTING BRIDGE. CONSTRUCT NEW BRIDGE AND ROADWAY APPROACHES, DRAINAGE, GUARDRAIL, AND PAVE UP TO BUT NOT INCLUDING THE FINAL LAYER OF SURFACE COURSE AS FOLLOWS (SEE CONSTRUCTION PLANS):
- STA. 13+50+/- -L- TO STA. 17+65+/- -L-
- STEP 2. AWAY FROM TRAFFIC, PAVE THE FINAL LAYER OF SURFACE COURSE AS FOLLOWS (SEE CONSTRUCTION PLANS):
- STA. 13+50+/- -L- TO STA. 17+65+/- -L-
  - PLACE FINAL PAVEMENT MARKINGS AND MARKERS (SEE FINAL PAVEMENT MARKING PLAN).
- STEP 3. REMOVE ALL TYPE III BARRICADES AND DETOUR SIGNING. REOPEN SR 1935 (WILLOWSIDE DRIVE) TO A 2-LANE, 2-WAY TRAFFIC PATTERN.

\* SEE SHEET TMP-2 FOR SIGN DESIGN



DETOUR ROUTE ● ● ●

\*\* SEE RSD 1101.03, SHEET 1 OF 9, FOR ADDITIONAL WORK ZONE SIGNS AND LOCATIONS

11/9/2015 p:\t\p\projects-b\4751\traffic\trafficcontrol\top\B4751.TC.TMP03.dgn User:scodts

APPROVED: *Lori D. Stoucho*  
902CB18918148C...

DATE: 11/9/2015

**DOCUMENT NOT CONSIDERED FINAL UNLESS ALL SIGNATURES COMPLETED**

**TEMPORARY TRAFFIC CONTROL PHASING AND OFF-SITE DETOUR WILLOWSIDE DRIVE SR 1935**