

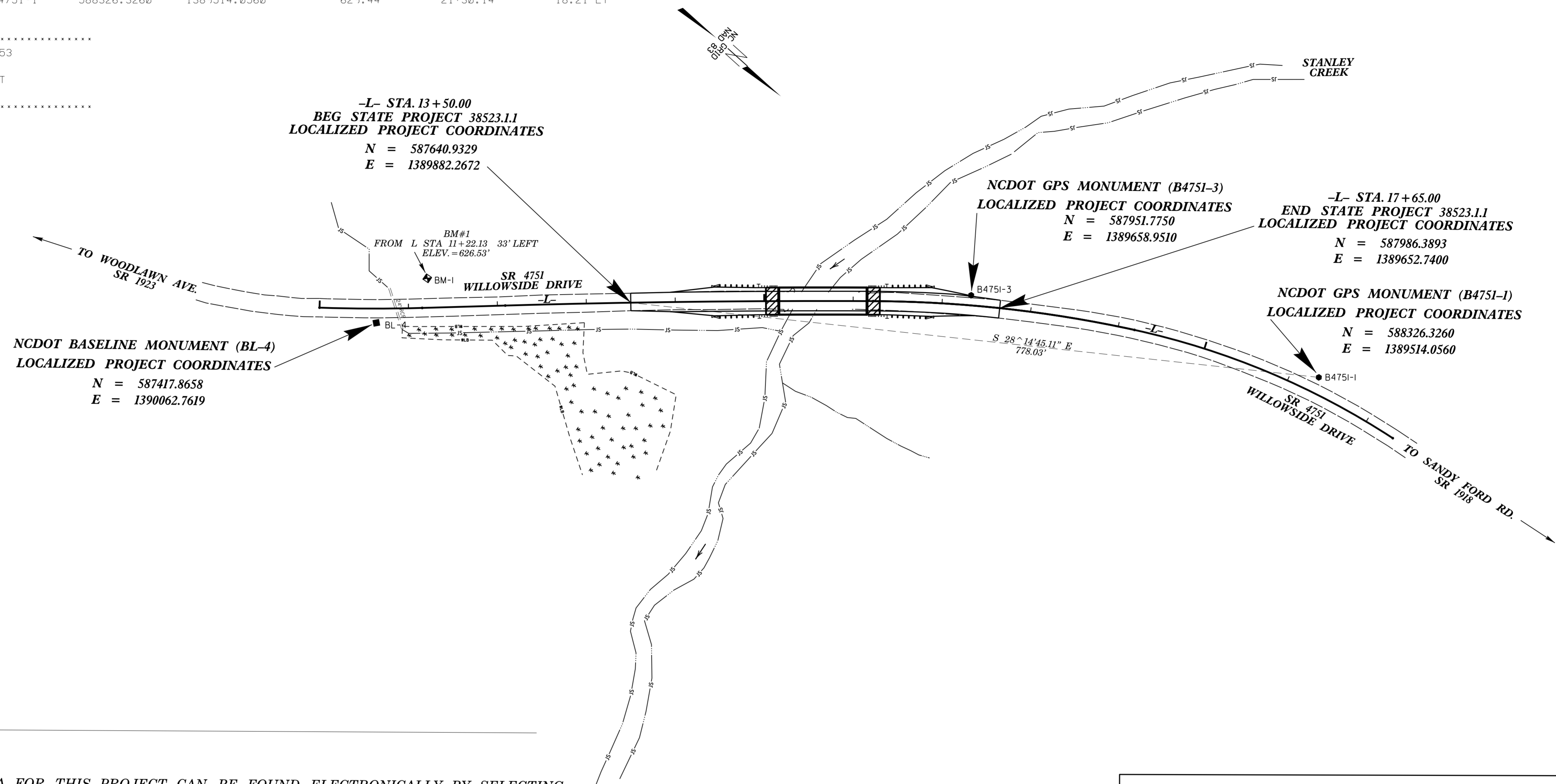
6/2/99

SURVEY CONTROL SHEET B-4751

PROJECT REFERENCE NO. B-4751	SHEET NO. 1C-1
Location and Surveys	

BL POINT	DESC.	NORTH	EAST	ELEVATION	L STATION	OFFSET
4	BL-4	587417.8658	1390062.7619	623.93	10+63.86	16.02 RT
GPS3	B4751-3	587951.7750	1389658.9510	622.80	17+31.86	11.38 LT
GPS1	B4751-1	588326.3260	1389514.0560	629.44	21+30.14	18.21 LT

.....
 BM1 ELEVATION = 626.53
 N 587437 E 1389989
 L STATION 11+22.13 33' LEFT
 RR SPIKE IN 30' BEECH



NOTES:

1. THE CONTROL DATA FOR THIS PROJECT CAN BE FOUND ELECTRONICALLY BY SELECTING PROJECT CONTROL DATA AT:
[HTTP://WWW.DOH.DOT.STATE.NC.US/PRECONSTRUCT/HIGHWAY/LOCATION/PROJECT/](http://www.doh.dot.state.nc.us/preconstruct/highway/location/project/)
 THE FILES TO BE FOUND ARE AS FOLLOWS:
 B4751_LS_CONTROL.TXT
 SITE CALIBRATION INFORMATION HAS NOT BEEN PROVIDED FOR THIS PROJECT. IF FURTHER INFORMATION IS NEEDED, PLEASE CONTACT THE LOCATION AND SURVEYS UNIT.
- INDICATES GEODETIC CONTROL MONUMENTS USED OR SET FOR HORIZONTAL PROJECT CONTROL BY THE NCDOT LOCATION AND SURVEYS UNIT.
 PROJECT CONTROL ESTABLISHED USING GLOBAL POSITIONING SYSTEM.
 NETWORK ESTABLISHED FROM NGS ONLINE POSITIONING SERVICE (OPUS)

DATUM DESCRIPTION

THE LOCALIZED COORDINATE SYSTEM DEVELOPED FOR THIS PROJECT IS BASED ON THE STATE PLANE COORDINATES ESTABLISHED BY NCGS FOR MONUMENT "B4751-1"
 WITH NAD 83 STATE PLANE GRID COORDINATES OF
 NORTHING: 588326.326(ft) EASTING: 1389514.056(ft)
 ELEVATION: 629.44(ft)
 THE AVERAGE COMBINED GRID FACTOR USED ON THIS PROJECT (GROUND TO GRID) IS: 0.99938118
 THE N.C. LAMBERT GRID BEARING AND LOCALIZED HORIZONTAL GROUND DISTANCE FROM "B4751-1" TO -L- STATION 13+50.00 IS
 S 28°14'45.11" E 778.03'
 ALL LINEAR DIMENSIONS ARE LOCALIZED HORIZONTAL DISTANCES
 VERTICAL DATUM USED IS NAVD 88

NOTE: DRAWING NOT TO SCALE

14 DEC 2015 09:06 B4751.LS.1c-1.dgn