

**This electronic collection of documents is provided
for the convenience of the user
and is Not a Certified Document –**

**The documents contained herein were originally issued
and sealed by the individuals whose names and license
numbers appear on each page, on the dates appearing
with their signature on that page.**

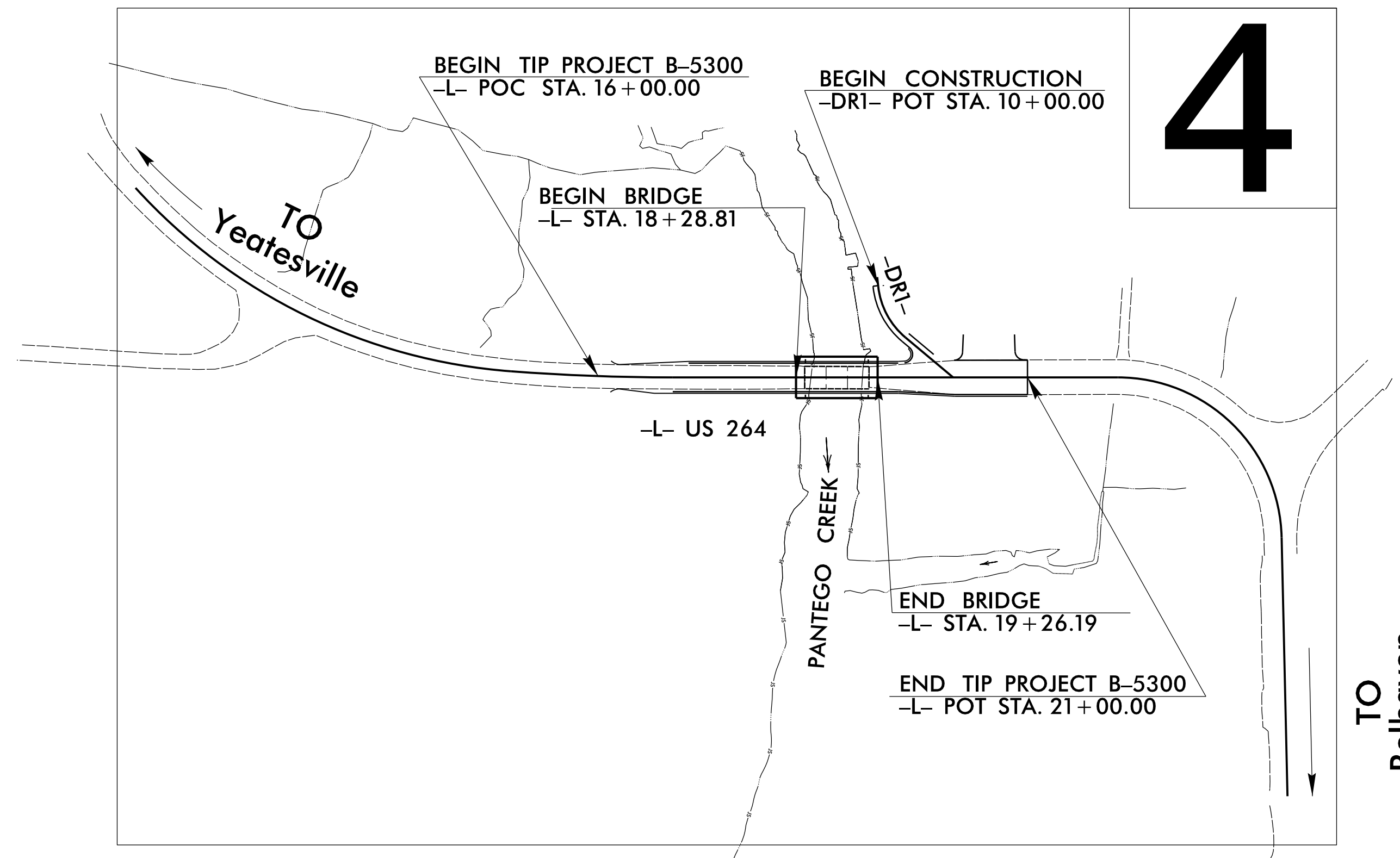
**This file or an individual page
shall not be considered a certified document.**

TIP PROJECT: B-5300

STATE OF NORTH CAROLINA
 DIVISION OF HIGHWAYS
 PLAN FOR PROPOSED
 HIGHWAY EROSION CONTROL
BEAUFORT COUNTY



LOCATION: REPLACE BRIDGE NO. 55 OVER PANTEGO CREEK ON US 264
TYPE OF WORK: GRADING, PAVING, DRAINAGE AND STRUCTURE



STATE	STATE PROJECT REFERENCE NO.	SHEET NO.	TOTAL SHEETS
N.C.	B-5300	EC-1	
STATE PROJ. NO.	F.A. PROJ. NO.	DESCRIPTION	

EROSION AND SEDIMENT CONTROL MEASURES

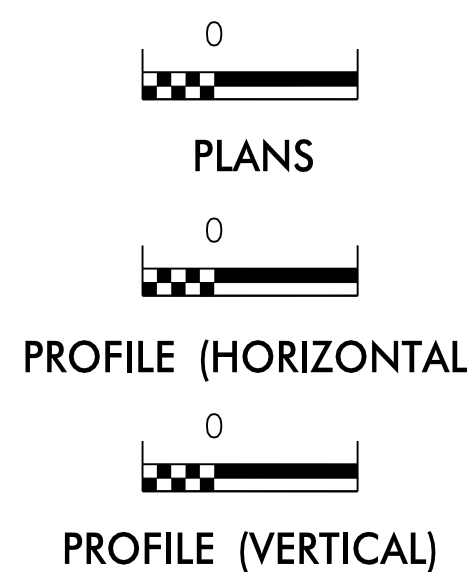
Std. #	Description	Symbol
1630.03	Temporary Silt Ditch	TD
1630.05	Temporary Diversion	TD
1605.01	Temporary Silt Fence	III III III
1606.01	Special Sediment Control Fence	X X X X X
1622.01	Temporary Berms and Slope Drains	TD
1630.02	Silt Basin Type B	Silt Basin Type B
1633.01	Temporary Rock Silt Check Type-A	Rock Silt Check Type-A
	Temporary Rock Silt Check Type-A with Matting and Polyacrylamide (PAM)	Rock Silt Check Type-A with Matting and Polyacrylamide (PAM)
1633.02	Temporary Rock Silt Check Type-B	Rock Silt Check Type-B
	Wattle/Coir Fiber Wattle	Wattle/Coir Fiber Wattle
	Wattle/Coir Fiber Wattle with Polyacrylamide (PAM)	Wattle/Coir Fiber Wattle with Polyacrylamide (PAM)
1634.01	Temporary Rock Sediment Dam Type-A	Rock Sediment Dam Type-A
1634.02	Temporary Rock Sediment Dam Type-B	Rock Sediment Dam Type-B
1635.01	Rock Pipe Inlet Sediment Trap Type-A	Rock Pipe Inlet Sediment Trap Type-A
1635.02	Rock Pipe Inlet Sediment Trap Type-B	Rock Pipe Inlet Sediment Trap Type-B
1630.04	Stilling Basin	Stilling Basin
1630.06	Special Stilling Basin	Special Stilling Basin
	Rock Inlet Sediment Trap:	
1632.01	Type A	Type A
1632.02	Type B	Type B
1632.03	Type C	Type C
	Skimmer Basin	Skimmer Basin
	Tiered Skimmer Basin	Tiered Skimmer Basin
	Infiltration Basin	Infiltration Basin

THIS PROJECT CONTAINS EROSION CONTROL PLANS FOR CLEARING AND GRUBBING PHASE OF CONSTRUCTION.

THIS PROJECT HAS BEEN DESIGNED TO SENSITIVE WATERSHED STANDARDS.

ENVIRONMENTALLY SENSITIVE AREA(S) EXIST ON THIS PROJECT
Refer To E. C. Special Provisions for Special Considerations.

GRAPHIC SCALE



ROADSIDE ENVIRONMENTAL UNIT
 DIVISION OF HIGHWAYS
 STATE OF NORTH CAROLINA

THESE EROSION AND SEDIMENT CONTROL PLANS COMPLY WITH THE REGULATIONS SET FORTH BY THE NCG-010000 GENERAL CONSTRUCTION PERMIT EFFECTIVE AUGUST 3, 2011 ISSUED BY THE NORTH CAROLINA DEPARTMENT OF ENVIRONMENT AND NATURAL RESOURCES DIVISION OF WATER QUALITY.

Prepared in the Office of:
ROADSIDE ENVIRONMENTAL UNIT
 1 South Wilmington St.
 Raleigh, NC 27611
2012 STANDARD SPECIFICATIONS

Designed by:
Wes Chandler 3374
 NAME LEVEL III CERTIFICATION NO.

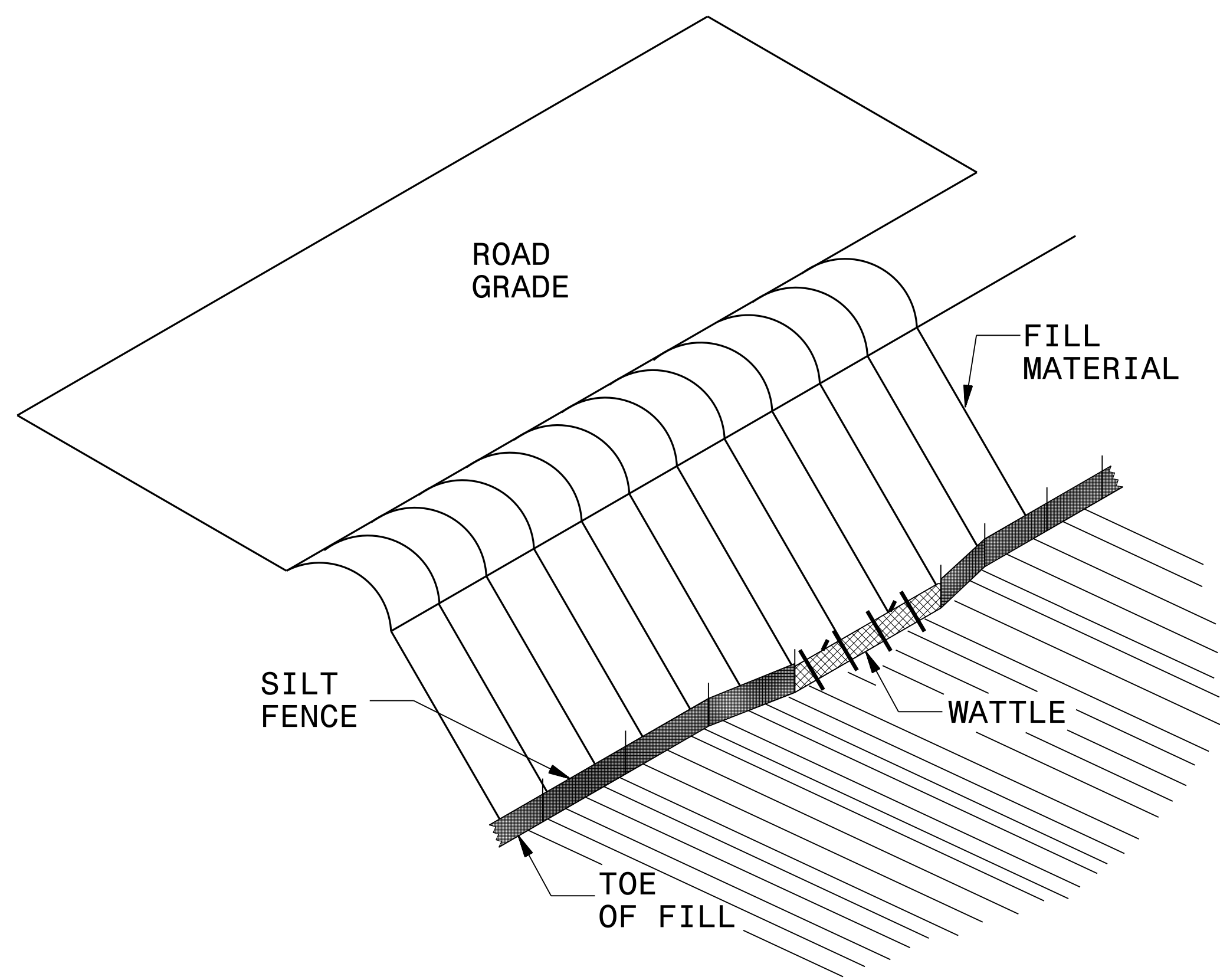
Roadway Standard Drawings

The following roadway english standards as appear in "Roadway Standard Drawings"- Roadway Design Unit - N. C. Department of Transportation - Raleigh, N. C., dated January 2012 and the latest revision thereto are applicable to this project and by reference hereby are considered a part of these plans.

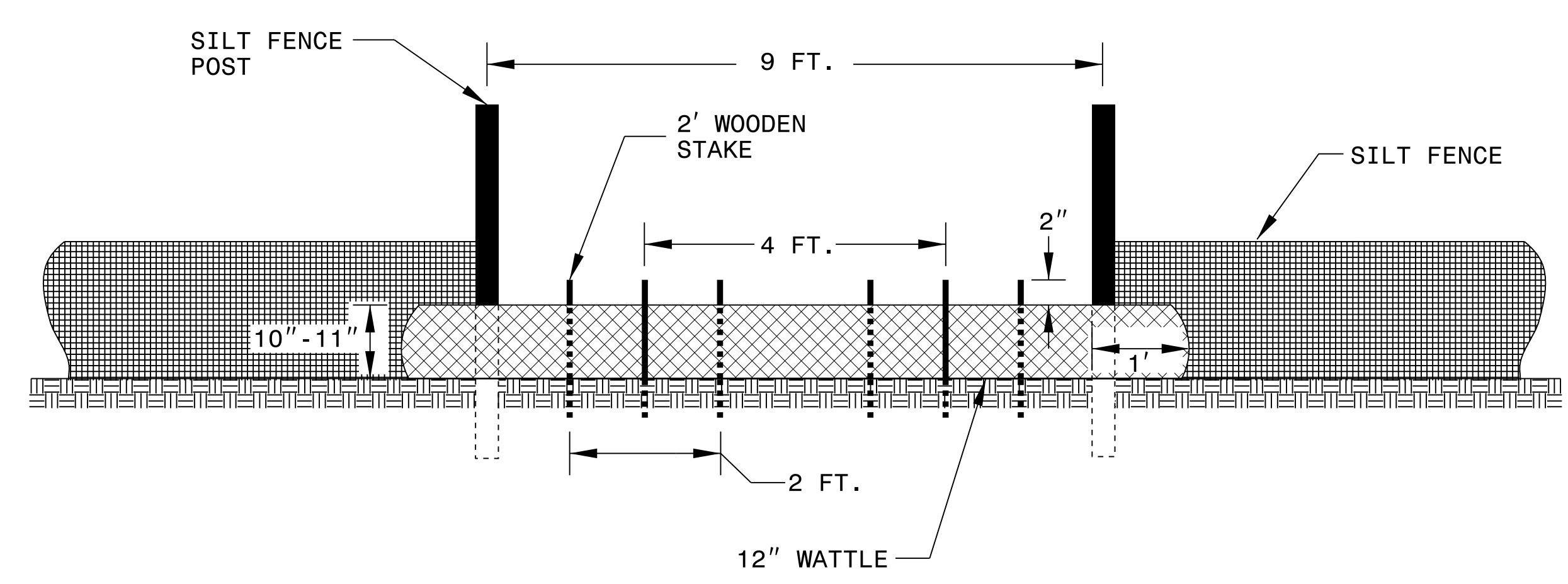
1604.01 Railroad Erosion Control Detail	1632.01 Rock Inlet Sediment Trap Type A
1605.01 Temporary Silt Fence	1632.02 Rock Inlet Sediment Trap Type B
1606.01 Special Sediment Control Fence	1632.03 Rock Inlet Sediment Trap Type C
1607.01 Gravel Construction Entrance	1633.01 Temporary Rock Silt Check Type A
1622.01 Temporary Berms and Slope Drains	1633.02 Temporary Rock Silt Check Type B
1630.01 Riser Basin	1634.01 Temporary Rock Sediment Dam Type A
1630.02 Silt Basin Type B	1634.02 Temporary Rock Sediment Dam Type B
1630.03 Temporary Silt Ditch	1635.01 Rock Pipe Inlet Sediment Trap Type A
1630.04 Stilling Basin	1635.02 Rock Pipe Inlet Sediment Trap Type B
1630.05 Temporary Diversion	1640.01 Coir Fiber Baffle
1630.06 Special Stilling Basin	1645.01 Temporary Stream Crossing
1631.01 Matting Installation	

SILT FENCE COIR FIBER WATTLE BREAK DETAIL

PROJECT REFERENCE NO. B-5300	SHEET NO. EC-2
RW SHEET NO.	
ROADWAY DESIGN ENGINEER	HYDRAULICS ENGINEER



ISOMETRIC VIEW

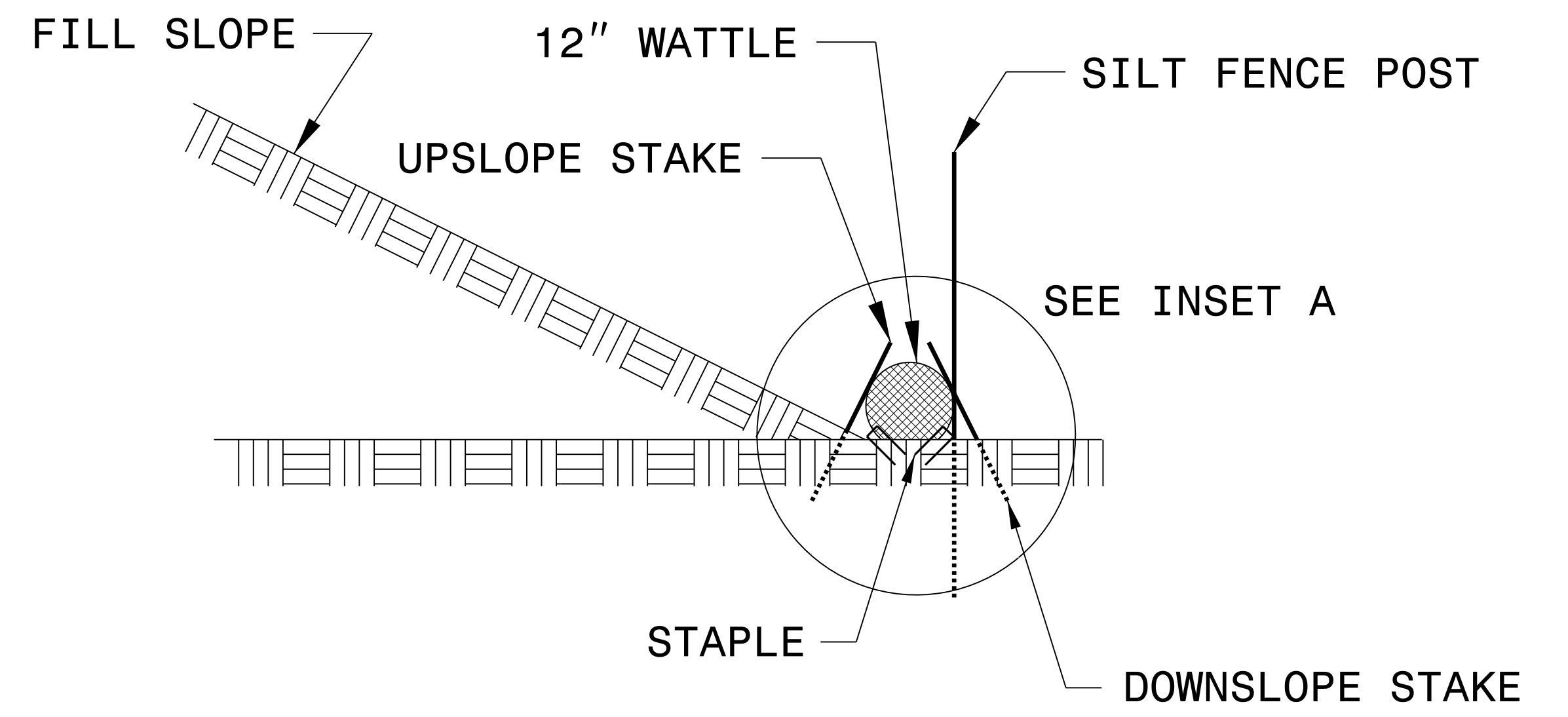
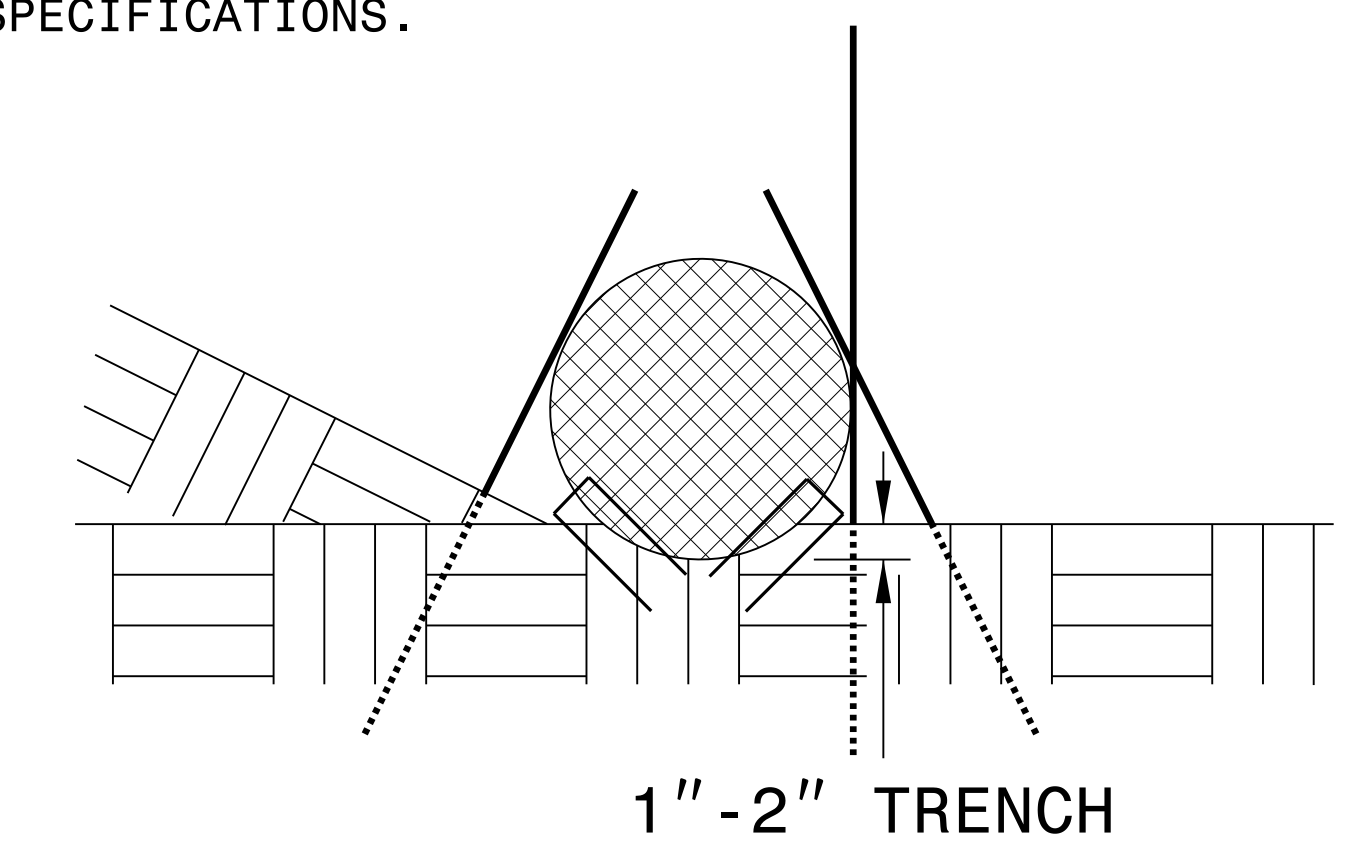


VIEW FROM SLOPE

NOTES:

- USE MINIMUM 12 IN. DIAMETER COIR FIBER (COCONUT FIBER) WATTLE AND LENGTH OF 10 FT.
- EXCAVATE A 1 TO 2 INCH TRENCH FOR WATTLE TO BE PLACED.
- DO NOT PLACE WATTLE ON TOE OF SLOPE.
- USE 2 FT. WOODEN STAKES WITH A 2 IN. BY 2 IN. NOMINAL CROSS SECTION.
- INSTALL A MINIMUM OF 2 UPSLOPE STAKES AND 4 DOWNSLOPE STAKES AT AN ANGLE TO WEDGE WATTLE TO GROUND.
- PROVIDE STAPLES MADE OF 0.125 IN. DIAMETER STEEL WIRE FORMED INTO A U SHAPE NOT LESS THAN 12" IN LENGTH.
- INSTALL STAPLES APPROXIMATELY EVERY 1 LINEAR FOOT ON BOTH SIDES OF WATTLE AND AT EACH END TO SECURE IT TO THE SOIL.
- WATTLE INSTALLATION CAN BE ON OUTSIDE OF THE SILT FENCE AS DIRECTED.
- INSTALL TEMPORARY SILT FENCE IN ACCORDANCE WITH SECTION 1605 OF THE STANDARD SPECIFICATIONS.

INSET A



SIDE VIEW

DIVISION OF HIGHWAYS
STATE OF NORTH CAROLINA

PROJECT REFERENCE NO. <i>B-5300</i>	SHEET NO. <i>EC-3</i>
ROADWAY DESIGN ENGINEER	HYDRAULICS ENGINEER

SOIL STABILIZATION TIMEFRAMES

<i>SITE DESCRIPTION</i>	<i>STABILIZATION TIME</i>	<i>TIMEFRAME EXCEPTIONS</i>
PERIMETER DIKES, SWALES, DITCHES AND SLOPES	7 DAYS	NONE
HIGH QUALITY WATER (HQW) ZONES	7 DAYS	NONE
SLOPES STEEPER THAN 3:1	7 DAYS	IF SLOPES ARE 10' OR LESS IN LENGTH AND ARE NOT STEEPER THAN 2:1, 14 DAYS ARE ALLOWED.
SLOPES 3:1 OR FLATTER	14 DAYS	7 DAYS FOR SLOPES GREATER THAN 50' IN LENGTH.
ALL OTHER AREAS WITH SLOPES FLATTER THAN 4:1	14 DAYS	NONE, EXCEPT FOR PERIMETERS AND HQW ZONES.

PROJECT REFERENCE NO.	SHEET NO.
B-5300	EC-4/CONST.4
RW SHEET NO.	
ROADWAY DESIGN ENGINEER	HYDRAULICS ENGINEER

NOTE:
UTILIZE SPECIAL STILLING BASIN(S)
AS STILLING BASIN WHERE APPLICABLE.

NOTE:
PLACE TEMPORARY ROCK SEDIMENT DAMS TYPE - B
AND TEMPORARY ROCK SILT CHECKS TYPE - A AT
DRAINAGE OUTLETS.

CLEARING AND GRUBBING
EROSION CONTROL FOR
CONSTRUCTION SHEET 4

 ENVIRONMENTALLY SENSITIVE AREA
SEE PROJECT SPECIAL PROVISIONS

NAD 83/NA 2011

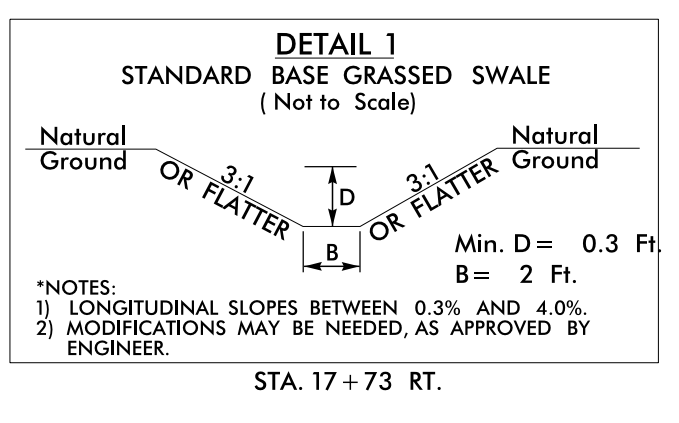
NOTE:
EXISTING BULKHEAD TO REMAIN
AND BE UNDISTURBED

BEGIN TIP PROJECT B-5300
-L- POC STA. 16+00.00

BEGIN CONSTRUCTION
DRI - POT STA. 19+00.00

-L- POT STA. 20+13.43
-DRI- POT STA. 11+52.37


END TIP PROJECT B-5300
-L- POT STA. 21+00.00




FOR DETAIL OF -DRI-,
SEE SHEET 2A-3

FOR -L- PROFILE, SEE SHEET 5

FOR -DRI- PROFILE, SEE SHEET 5

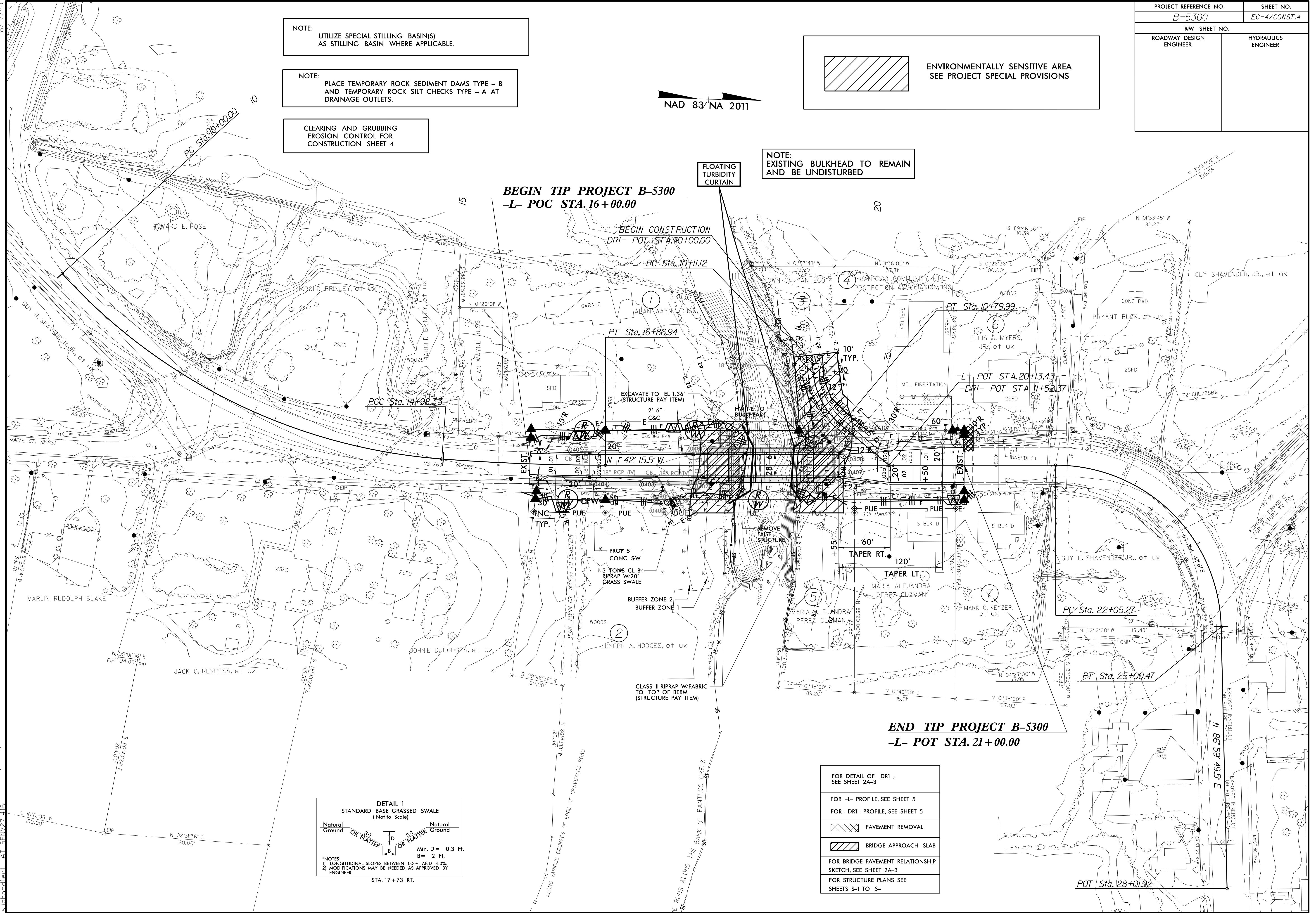
 PAVEMENT REMOVAL

 BRIDGE APPROACH SLAB

FOR BRIDGE-PAVEMENT RELATIONSHIP
SKETCH, SEE SHEET 2A-3

FOR STRUCTURE PLANS SEE
SHEETS S-1 TO S-

8/17/99
B-5300-2015_08-41
R:\PROJECTS\B-5300\EC-4\CONST.4\B-5300-2015_08-41.dwg
REVISIONS: 1
DATE: 8/17/99
BY: [unreadable]



PROJECT REFERENCE NO.	SHEET NO.
B-5300	EC-5/CONST.4
RW SHEET NO.	
ROADWAY DESIGN ENGINEER	HYDRAULICS ENGINEER

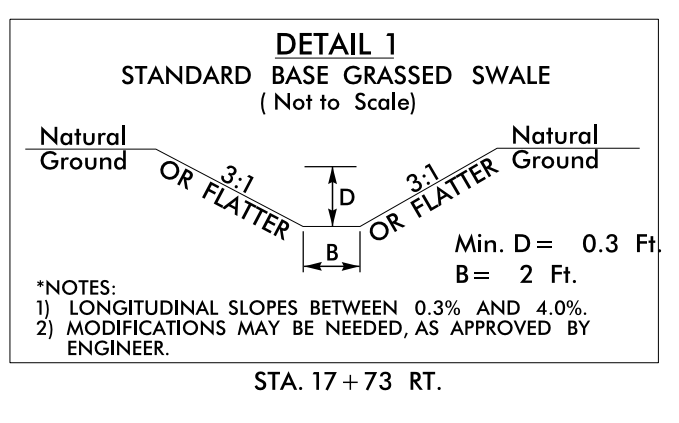
NOTE:
UTILIZE SPECIAL STILLING BASIN(S)
AS STILLING BASIN WHERE APPLICABLE.

NAD 83/NA 2011

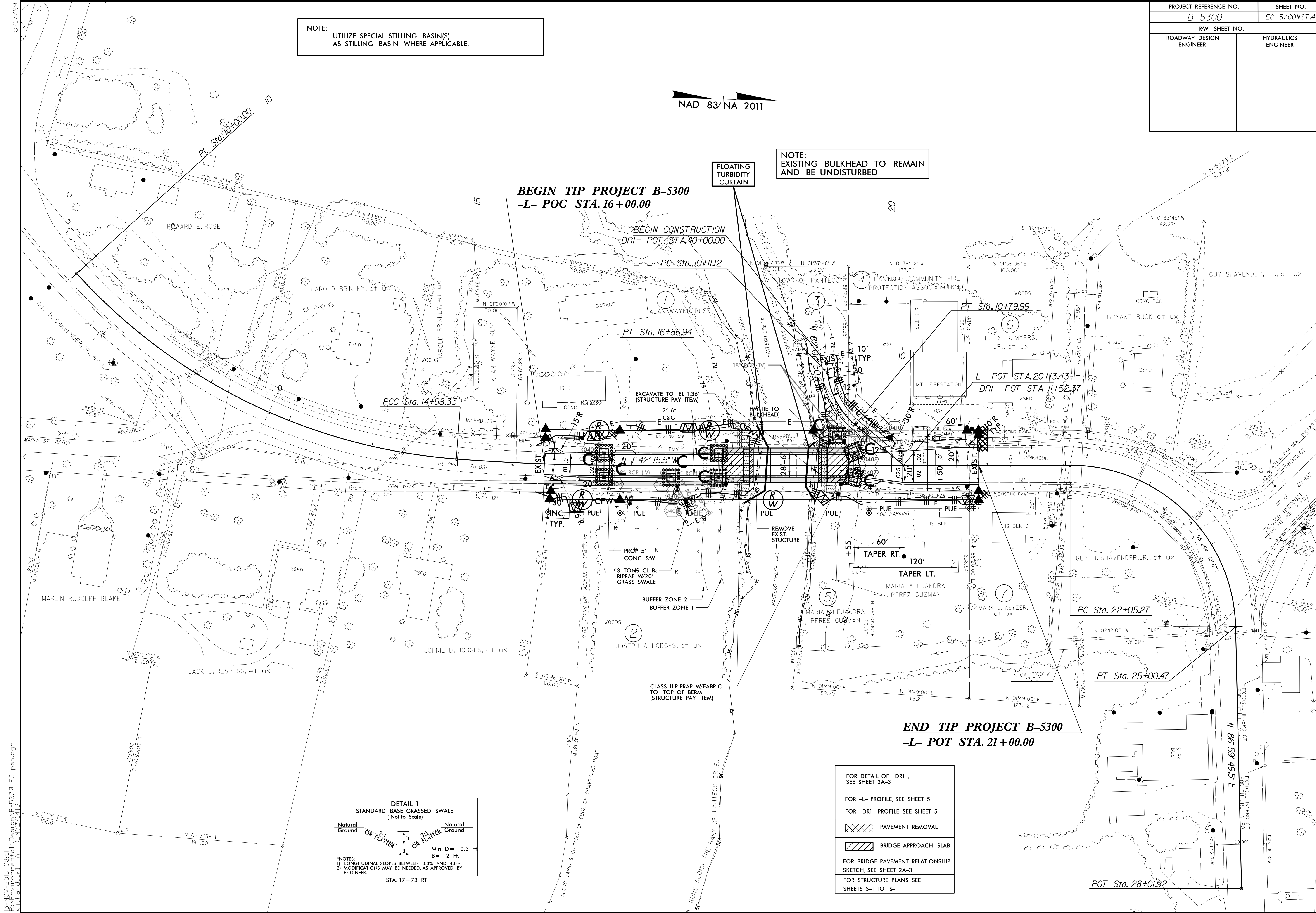
NOTE:
EXISTING BULKHEAD TO REMAIN
AND BE UNDISTURBED

BEGIN TIP PROJECT B-5300
-L- POC STA. 16+00.00

END TIP PROJECT B-5300
-L- POT STA. 21+00.00



FOR DETAIL OF -DRI-, SEE SHEET 2A-3
FOR -L- PROFILE, SEE SHEET 5
FOR -DRI- PROFILE, SEE SHEET 5
PAVEMENT REMOVAL
BRIDGE APPROACH SLAB
FOR BRIDGE-PAVEMENT RELATIONSHIP SKETCH, SEE SHEET 2A-3
FOR STRUCTURE PLANS SEE SHEETS S-1 TO S-



13-NOV-2015 08:51
 R:\Projects\B-5300\EC-5\psh.dgn
 REVISION 1
 17/416