

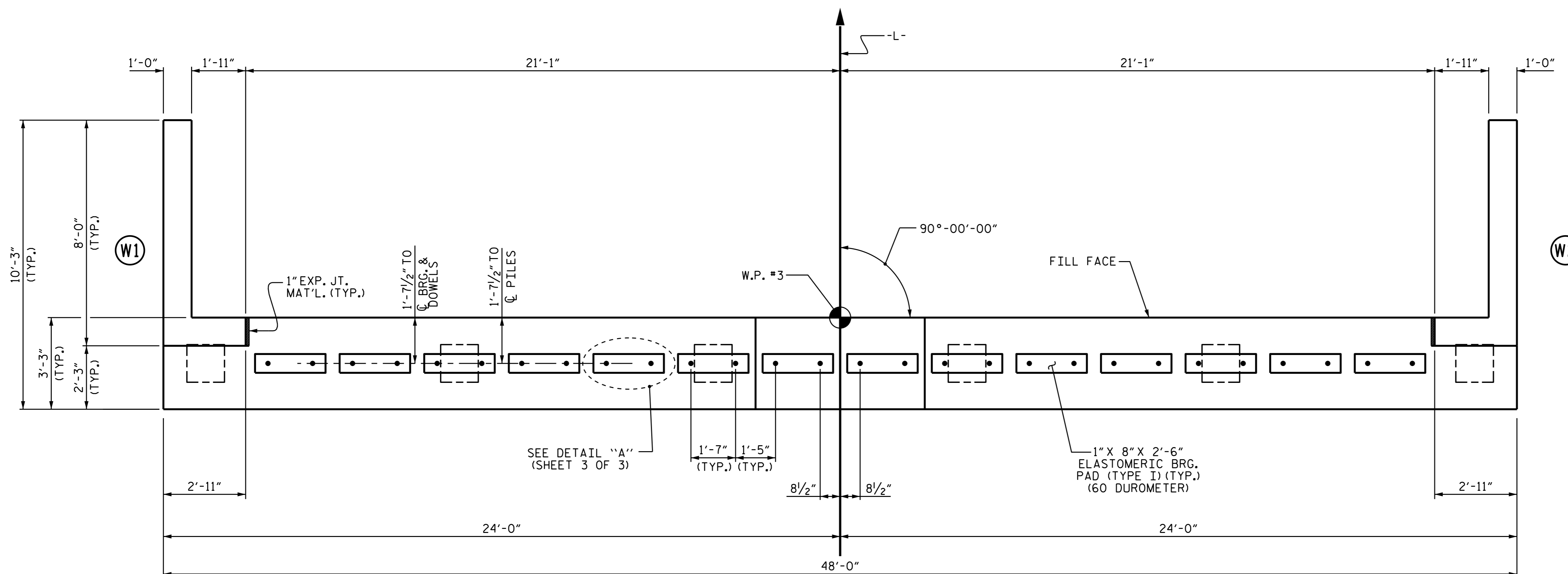
NOTES

STIRRUPS IN CAP MAY BE SHIFTED AS NECESSARY TO CLEAR DOWELS.

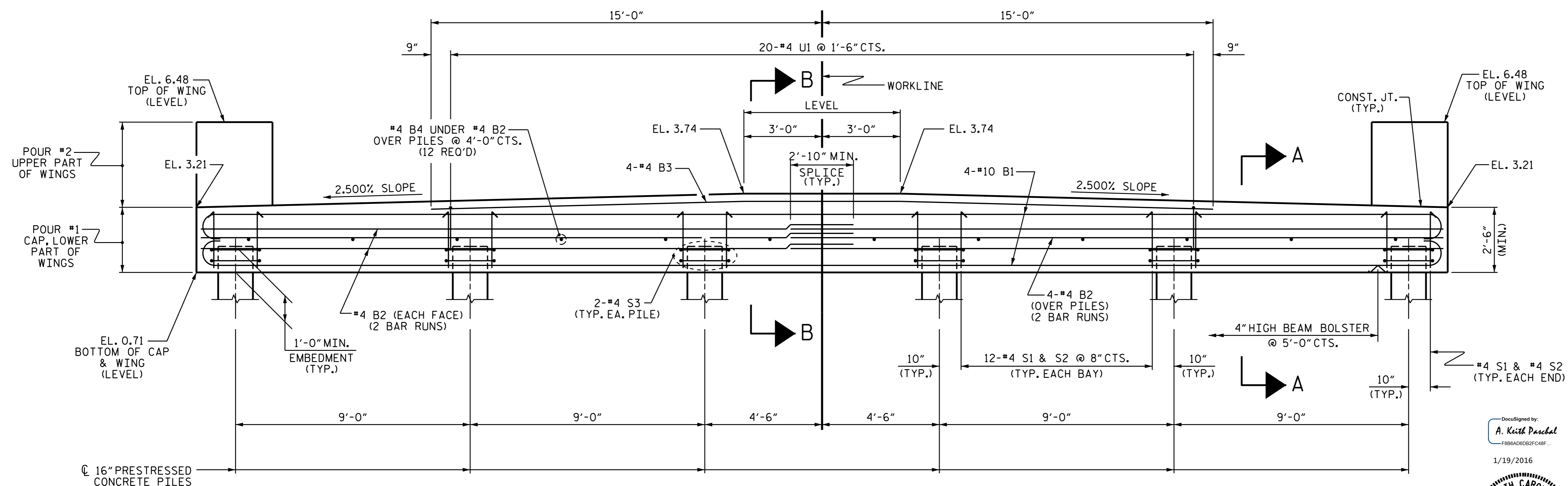
INSTALL THE 4" DIA. DRAIN PIPE THROUGH THE WING WALL AS REQUIRED. FOR REINFORCED BRIDGE APPROACH FILLS, SEE THE ROADWAY PLANS. REINFORCING STEEL IN THE WING WALL MAY BE SHIFTED AS NECESSARY TO CLEAR THE DRAIN PIPE.

FOR WING DETAILS, SEE SHEET 2 OF 3.

FIELD BEND #4 B3 AS NECESSARY TO MAINTAIN REQUIRED CONCRETE COVER.



PLAN



ELEVATION

WINGS NOT SHOWN FOR CLARITY. FOR SECTION A-A & B-B, SEE SHEET 3 OF 3.

PROJECT NO. B-5300
 BEAUFORT COUNTY
 STATION: 18+77.50 -L-

SHEET 1 OF 3

Designed by:
A. Keith Paschal
 1/19/2016



STATE OF NORTH CAROLINA
 DEPARTMENT OF TRANSPORTATION
 RALEIGH

SUBSTRUCTURE
 END BENT 2

DRAWN BY: K. P. SEDAI DATE: 7/7/15
 CHECKED BY: P. N. HOLDER DATE: 9/4/15
 DESIGN ENGINEER OF RECORD: P. N. HOLDER DATE: 9/4/15

19-JAN-2016 13:24
 R:\Structures\Plans\Final Plans\B-5300_SMU.EB2.dgn
 Kpaschal

DOCUMENT NOT CONSIDERED
 FINAL UNLESS ALL
 SIGNATURES COMPLETED

REVISIONS						SHEET NO. S-23
NO.	BY:	DATE:	NO.	BY:	DATE:	
1			3			TOTAL SHEETS 30
2			4			