

PROJECT REFERENCE NO. B-5300	SHEET NO. EC-5/CONST.4
RW SHEET NO.	
ROADWAY DESIGN ENGINEER	HYDRAULICS ENGINEER

NOTE:
UTILIZE SPECIAL STILLING BASIN(S)
AS STILLING BASIN WHERE APPLICABLE.



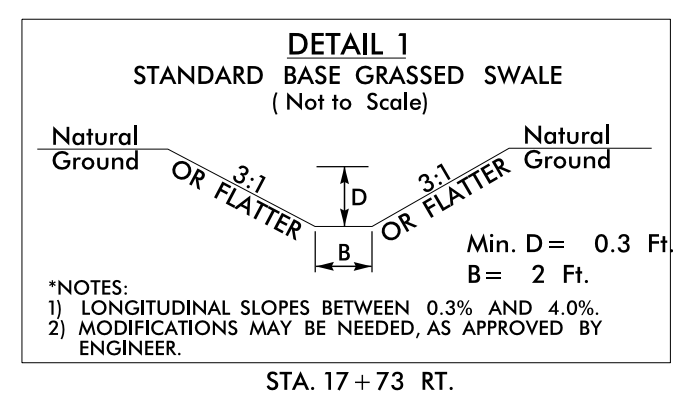
NOTE:
EXISTING BULKHEAD TO REMAIN
AND BE UNDISTURBED

BEGIN TIP PROJECT B-5300
-L- POC STA. 16+00.00

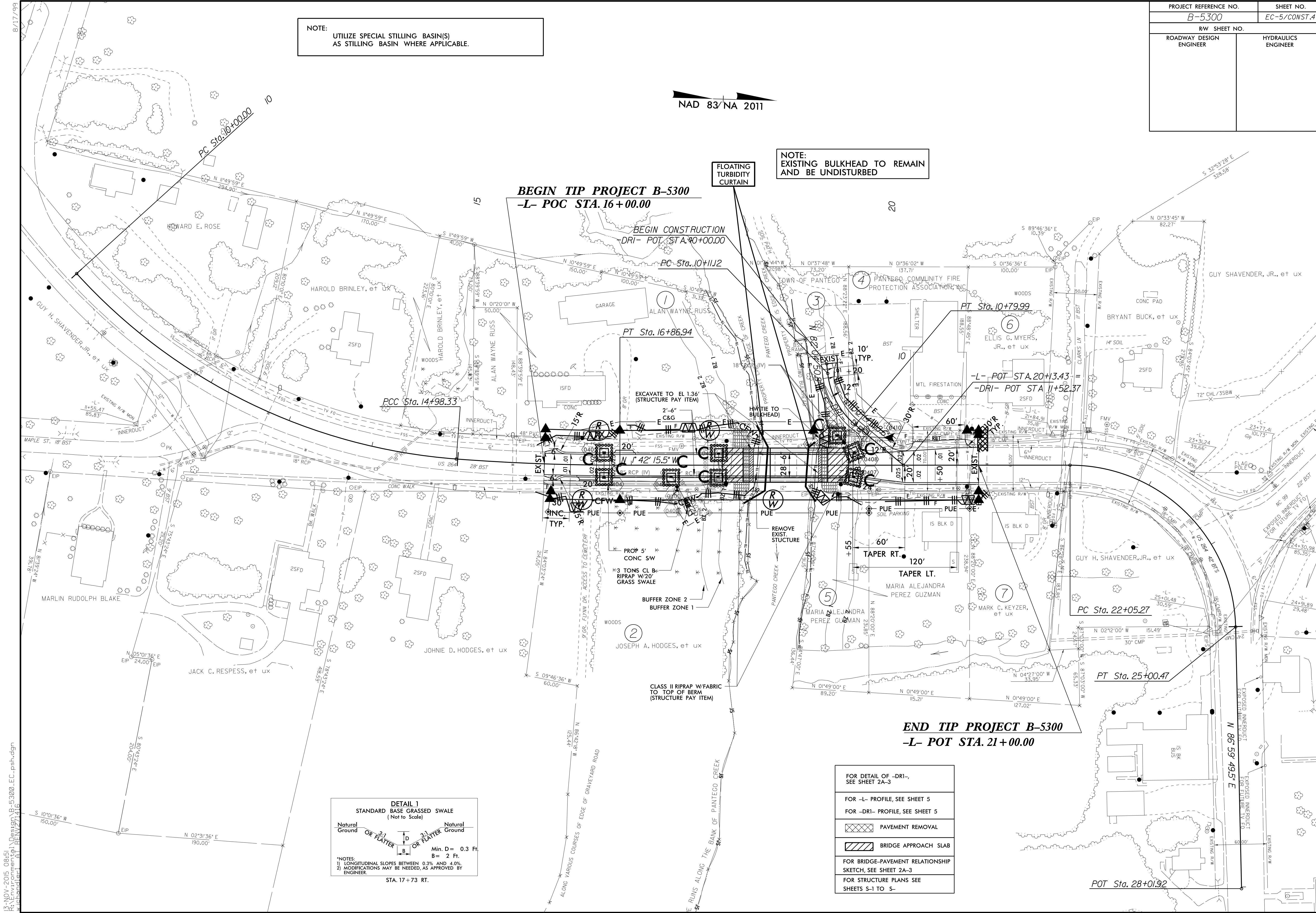
BEGIN CONSTRUCTION
DRI- POT STA. 19+00.00

-L- POT STA. 20+34.3 =
-DRI- POT STA. 11+52.37

END TIP PROJECT B-5300
-L- POT STA. 21+00.00



	FOR DETAIL OF -DRI-, SEE SHEET 2A-3
	FOR -L- PROFILE, SEE SHEET 5
	FOR -DRI- PROFILE, SEE SHEET 5
	PAVEMENT REMOVAL
	BRIDGE APPROACH SLAB
FOR BRIDGE-PAVEMENT RELATIONSHIP SKETCH, SEE SHEET 2A-3	
FOR STRUCTURE PLANS SEE SHEETS S-1 TO S-	



13-NOV-2015 08:51
 R:\Projects\B-5300\EC-5\psh.dgn
 REVISION 1
 17/16