



AMEC Foster Wheeler Environment & Infrastructure, Inc.
4021 Stirrup Creek Drive, Suite 100
Durham, North Carolina 27703
NC Engineering F-1253 NC Geology C-247
(919) 381-9900

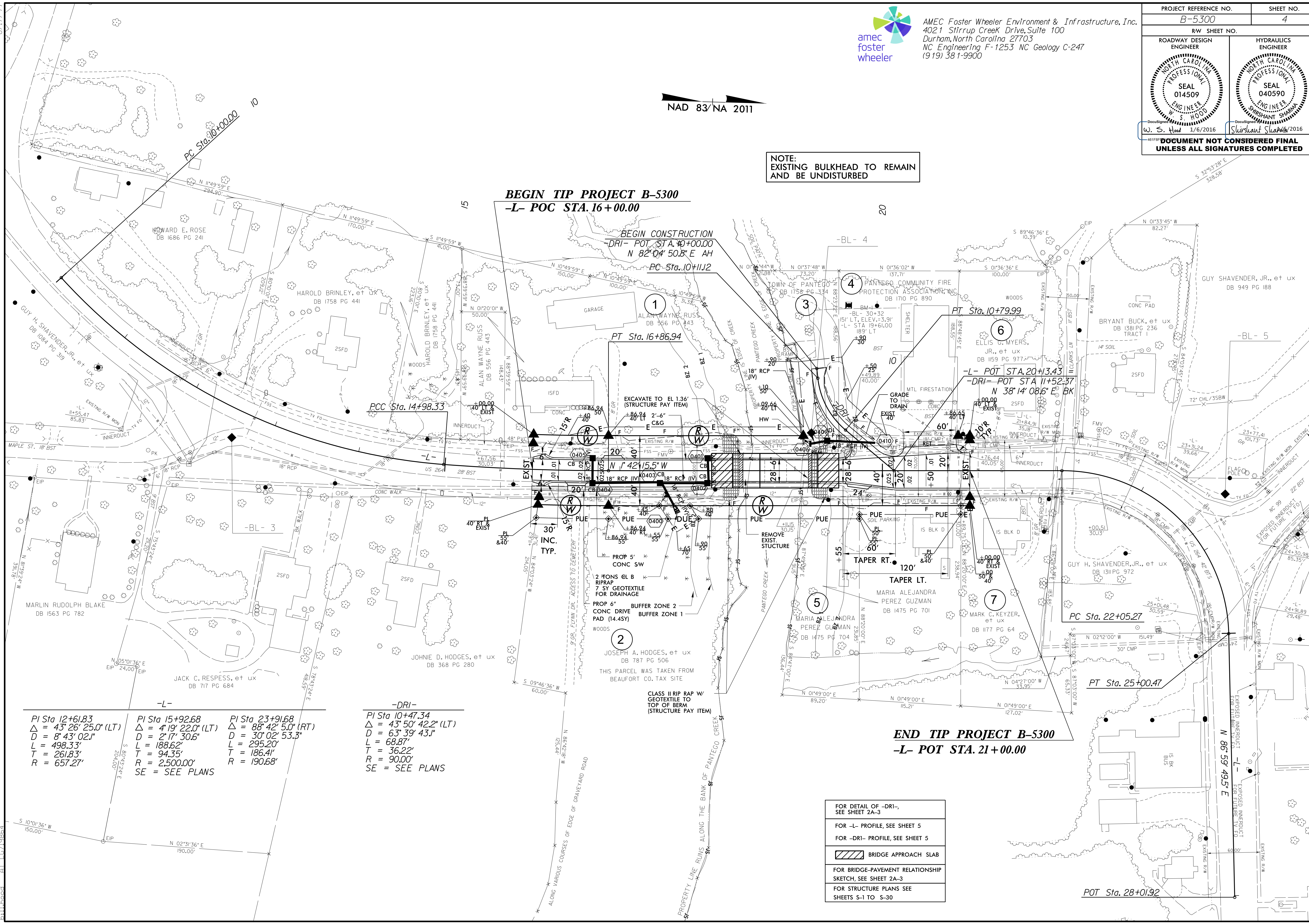
PROJECT REFERENCE NO. B-5300	SHEET NO. 4
RW SHEET NO.	
ROADWAY DESIGN ENGINEER	HYDRAULICS ENGINEER
W. S. Hood 1/6/2016	Shreshant Sharma 1/6/2016
DOCUMENT NOT CONSIDERED FINAL UNLESS ALL SIGNATURES COMPLETED	

NAD 83/NA 2011

NOTE:
EXISTING BULKHEAD TO REMAIN
AND BE UNDISTURBED

BEGIN TIP PROJECT B-5300
-L- POC STA. 16+00.00

END TIP PROJECT B-5300
-L- POT STA. 21+00.00



PI Sta 12+61.83 Δ = 43° 26' 25.0" (LT) D = 8' 43' 02.1" L = 498.33' T = 261.83' R = 657.27'	PI Sta 15+92.68 Δ = 4° 19' 22.0" (LT) D = 2' 17' 30.6" L = 188.62' T = 94.35' R = 2,500.00' SE = SEE PLANS	PI Sta 23+91.68 Δ = 88° 42' 5.0" (RT) D = 30' 02' 53.3" L = 295.20' T = 186.4' R = 190.68'
--	--	---

-DRI- PI Sta 10+47.34 Δ = 43° 50' 42.2" (LT) D = 63' 39' 43.1" L = 68.87' T = 36.22' R = 90.00' SE = SEE PLANS

- FOR DETAIL OF -DRI-, SEE SHEET 2A-3
- FOR -L- PROFILE, SEE SHEET 5
- FOR -DRI- PROFILE, SEE SHEET 5
- BRIDGE APPROACH SLAB
- FOR BRIDGE-PAVEMENT RELATIONSHIP SKETCH, SEE SHEET 2A-3
- FOR STRUCTURE PLANS SEE SHEETS S-1 TO S-30

28-DEC-2015 10:46 B-5300.Rdw.esh.dgn