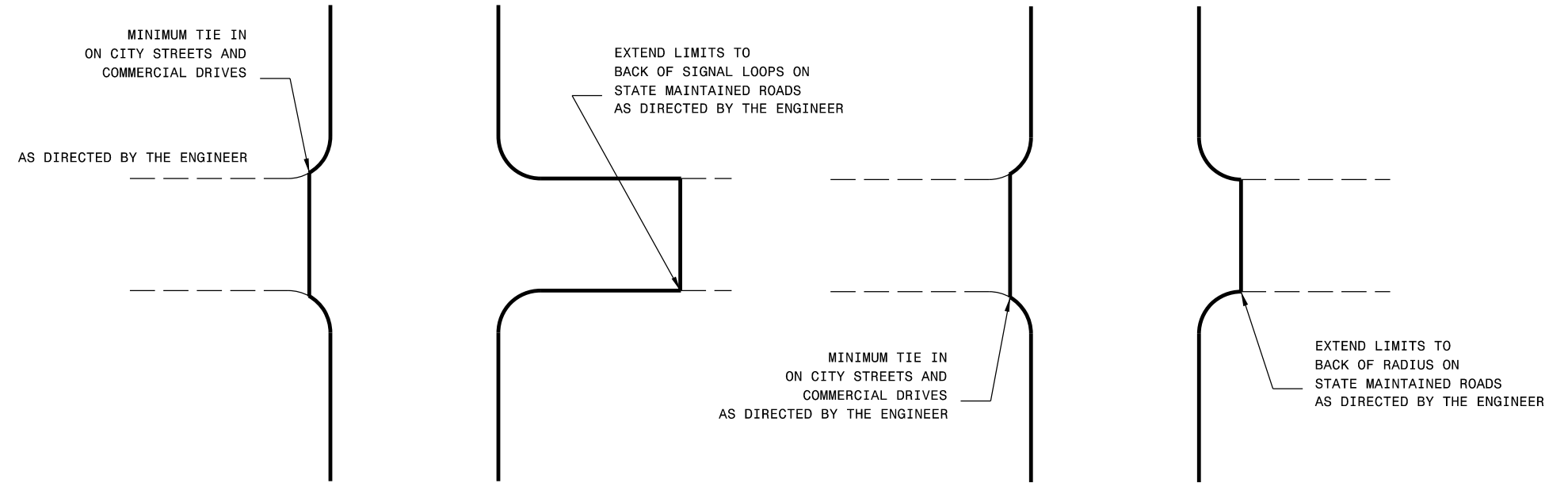


PAVEMENT SCHEDULE

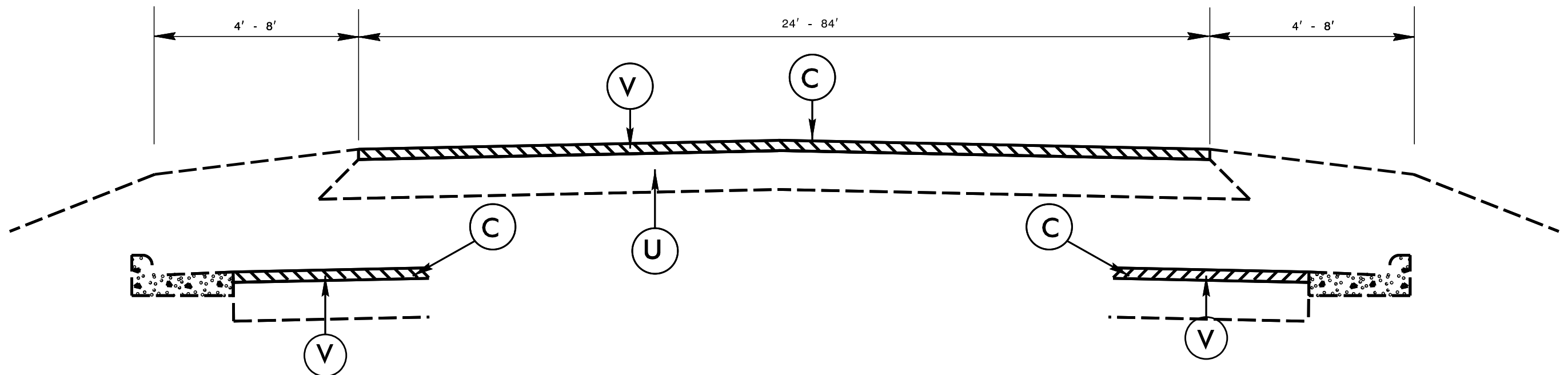
| | |
|---|--|
| C | 1½" ASPHALT CONCRETE SURFACE COURSE, TYPE S9.5B, AT AN AVERAGE RATE OF 168 LBS. PER SQ. YD. |
| M | PROP. CONTINUOUS MILLED RUMBLE STRIP, AS DIRECTED BY THE ENGINEER |
| U | EXISTING PAVEMENT |
| V | 1½" MILLING |

| | |
|--|----------------|
| PROJECT REFERENCE NO. 2016CPT.05.17.10911.1 | SHEET NO. 3 |
|--|----------------|



DETAIL OF PROJECT LIMITS AT SIGNALIZED Y LINES

DETAIL OF PROJECT LIMITS AT UNSIGNALIZED Y LINES



TYPICAL SECTION NO. 2