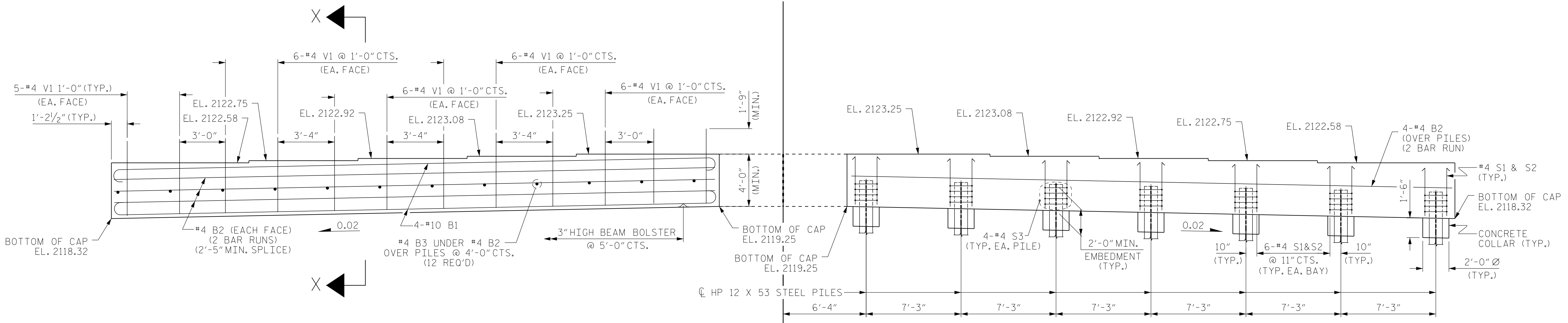


PLAN



ELEVATION

NOTES

- STIRRUPS IN CAP MAY BE SHIFTED AS NECESSARY TO CLEAR V1 BARS.
- FOR PILE SPLICE DETAILS, SEE SHEET 4 OF 4.
- FOR WING DETAILS, SEE SHEET 3 OF 4.
- THE TOP OF THE END BENT CAP, EXCEPT THE BEARING AREA, SHALL BE RAKED TO A DEPTH OF 1/4".

FOR WINGS SEE SHEET 3 OF 4.
 FOR SECTION X-X, SEE SHEET 4 OF 4.
 CONCRETE COLLARS FOR STEEL PILES NOT SHOWN IN PLAN AND ELEVATION VIEWS FOR CLARITY.
 SEE "CORROSION PROTECTION FOR STEEL PILES DETAIL", SHEET 4 OF 4.

PROJECT NO. R-5605
 TRANSYLVANIA COUNTY
 STATION: 50+83.00 -L-

SHEET 1 OF 4

STATE OF NORTH CAROLINA
 DEPARTMENT OF TRANSPORTATION
 RALEIGH
 SUBSTRUCTURE
 END BENT No. 1
 (INTEGRAL)

DRAWN BY : PEC DATE : 8/15
 CHECKED BY : CMT DATE : 8/15

Prepared in the Office of:
Mattern & Craig
 CONSULTING ENGINEERS & SURVEYORS
 FIRM LICENSE NO. C-1154
 12 BROAD STREET
 ASHEVILLE, NORTH CAROLINA 28801
 (828) 254-2201 - FAX (828) 254-4582

DocuSigned by:
Steven A. Campbell 12/21/2015

REVISIONS						SHEET NO.	
NO.	BY:	DATE:	NO.	BY:	DATE:	S-44	
1			3			TOTAL SHEETS	
2			4			51	

*****SYSTEM*****
 *****DCN*****
 *****USERNAME*****