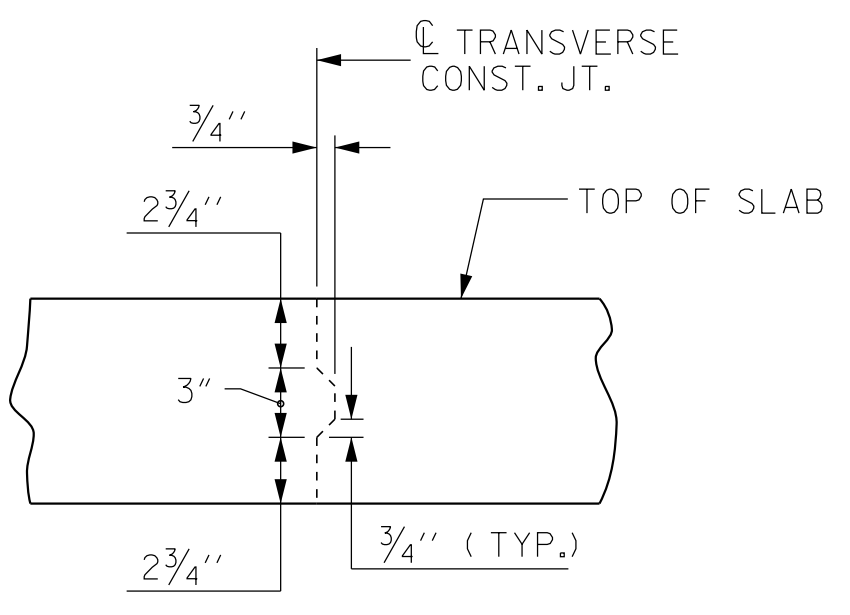


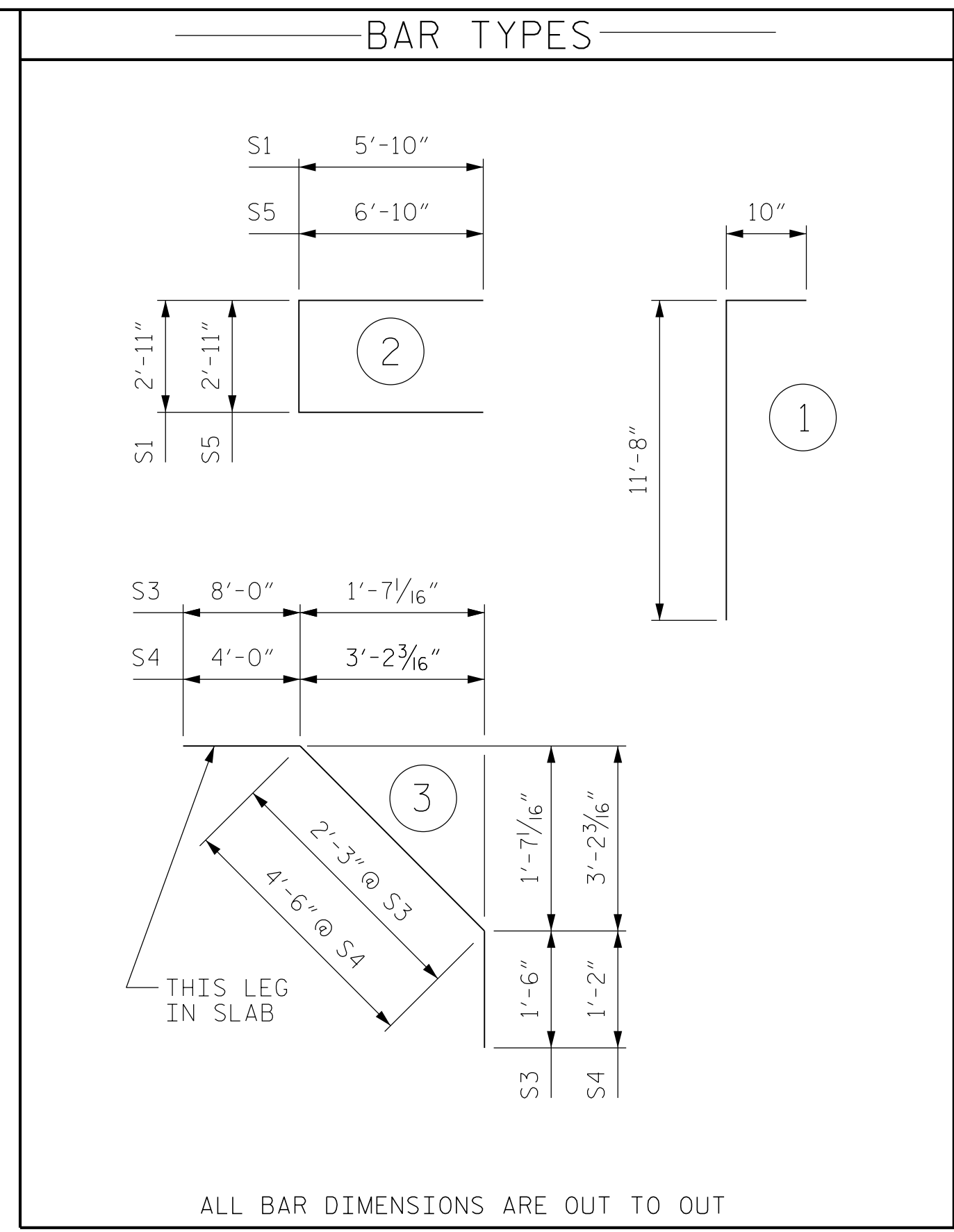
SUPERSTRUCTURE REINFORCING STEEL LENGTHS ARE BASED ON THE FOLLOWING MINIMUM SPLICE LENGTHS

BAR SIZE	SUPERSTRUCTURE EXCEPT APPROACH SLABS, PARAPET, AND BARRIER RAIL		APPROACH SLABS		PARAPET AND BARRIER RAIL
	EPOXY COATED	UNCOATED	EPOXY COATED	UNCOATED	
#4	2'-0"	1'-9"	2'-0"	1'-9"	2'-9"
#5	2'-6"	2'-2"	2'-6"	2'-2"	3'-5"
#6	3'-0"	2'-7"	3'-10"	2'-7"	4'-4"
#7	5'-3"	3'-6"			
#8	6'-10"	4'-7"			



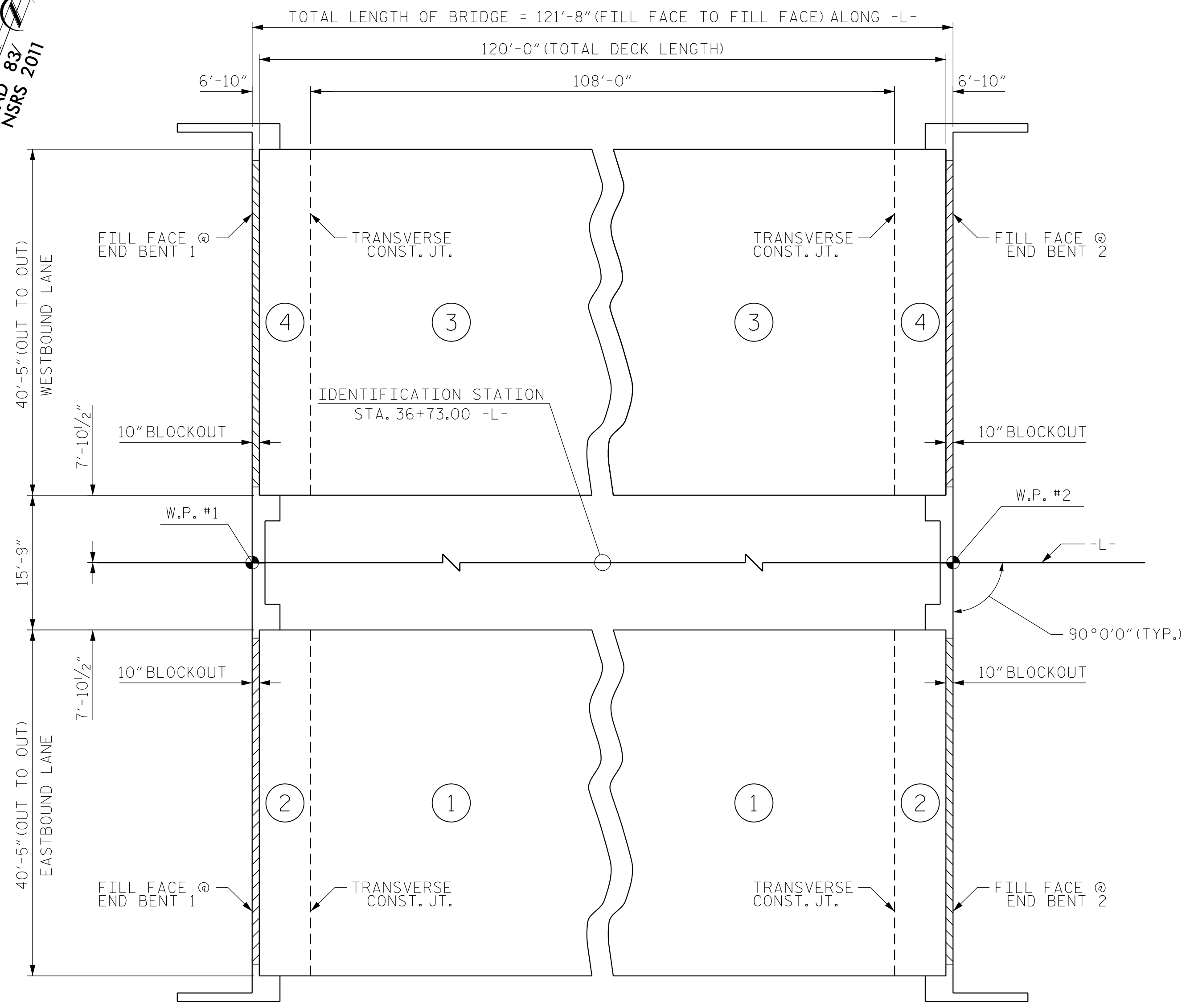
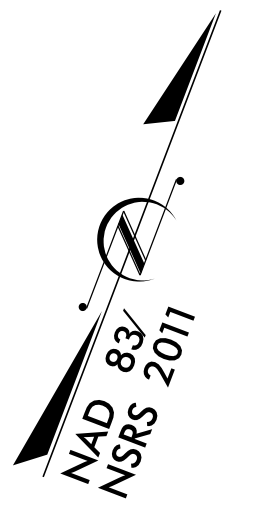
TRANSVERSE CONSTRUCTION JOINT DETAIL

NOTE: REINFORCING STEEL IN SLAB NOT SHOWN. LONGITUDINAL REINFORCING STEEL SHALL BE CONTINUOUS THRU JOINT



BILL OF MATERIAL						
BAR	NO.	SIZE	TYPE	LENGTH	WEIGHT	
* A3	412	#5	STR	40'-0"	17201	
A4	412	#5	STR	40'-0"	17201	
* B3	232	#4	STR	32'-0"	4960	
* B4	112	#8	STR	25'-0"	7482	
B5	48	#5	STR	42'-0"	2105	
B6	216	#5	STR	42'-0"	9469	
* B7	36	#4	STR	32'-0"	770	
* D1	144	#4	STR	0'-10"	81	
* G1	242	#4	STR	6'-2"	997	
H1	112	#5	1	12'-6"	1462	
H2	112	#7	STR	10'-0"	2292	
K1	56	#4	STR	24'-0"	898	
K2	16	#4	STR	5'-10"	63	
K3	80	#4	STR	7'-5"	397	
K4	16	#4	STR	4'-5"	48	
K5	8	#4	STR	4'-1"	22	
K6	40	#4	STR	4'-11"	132	
K7	8	#4	STR	3'-5"	19	
K8	16	#4	STR	2'-8"	29	
S1	104	#4	2	14'-7"	1014	
* S3	104	#4	3	11'-9"	817	
* S4	80	#4	3	9'-8"	517	
S5	16	#4	2	16'-7"	178	

* DENOTES EPOXY COATED REINF. STEEL



POURING SEQUENCE AND LAYOUT FOR COMPUTING AREA REINFORCED CONCRETE DECK SLAB (SQ. FT. = 9,835)

SUPERSTRUCTURE BILL OF MATERIAL			
	CLASS AA CONCRETE (CU. YDS.)	REINFORCING STEEL (LBS.)	EPOXY COATED REINFORCING STEEL (LBS.)
POUR 1	132.3		
POUR 2	81.3		
POUR 3	132.3		
POUR 4	81.3		
POUR 5 *	20.9		
POUR 6 *	16.7		
TOTALS**	464.2	35,329	32,825

* QUANTITY FOR POUR 5 IS FOR THE SIDEWALK ON THE NORTH SIDE OF THE STRUCTURE. QUANTITY FOR POUR 6 IS FOR THE SIDEWALK ON THE SOUTH SIDE OF THE STRUCTURE.

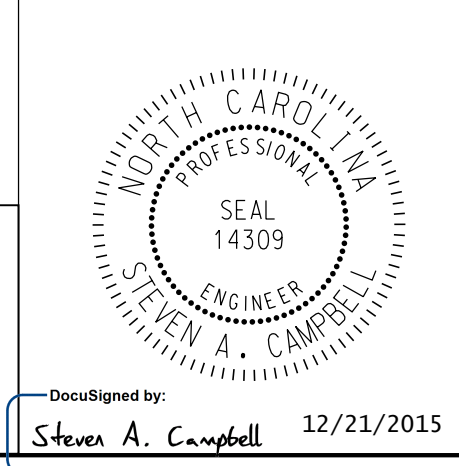
** QUANTITIES FOR BARRIER RAIL AND THE END POSTS FOR THE METAL RAILS ARE NOT INCLUDED.

NOTE: THE UPPER PORTION OF THE END BENT WINGS SHALL BE POURED WITH THE SUPERSTRUCTURE.

GROOVING BRIDGE FLOORS	
APPROACH SLABS	2,900 SQ.FT.
BRIDGE DECK	6,960 SQ.FT.
TOTAL	9,860 SQ.FT.

PROJECT NO. R-5605
 TRANSYLVANIA COUNTY
 STATION: 36+73.00 -L-

STATE OF NORTH CAROLINA
 DEPARTMENT OF TRANSPORTATION
 RALEIGH
 SUPERSTRUCTURE
 BILL OF MATERIAL
 & POUR SEQUENCE



Prepared in the Office of:
Mattern & Craig
 CONSULTING ENGINEERS & SURVEYORS
 FIRM LICENSE NO. C-1154
 12 BROAD STREET
 ASHEVILLE, NORTH CAROLINA 28801
 (828) 254-2201 - FAX (828) 254-4582

REVISIONS						SHEET NO.
NO.	BY:	DATE:	NO.	BY:	DATE:	S-18
1			3			TOTAL SHEETS
2			4			51

ASSEMBLED BY :	PFC	DATE :	8/15
CHECKED BY :	CMT	DATE :	8/15
DRAWN BY :	JMB 5/87	REV. 8/16/99	RWW/LES
CHECKED BY :	SJD 9/87	REV. 5/1/06	TLA/GM
		REV. 10/1/11	MAA/GM