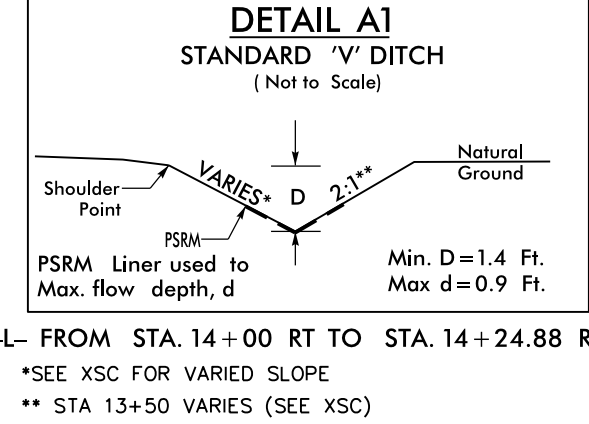
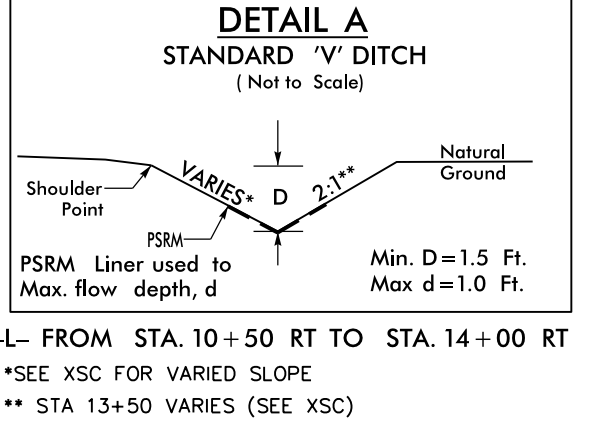
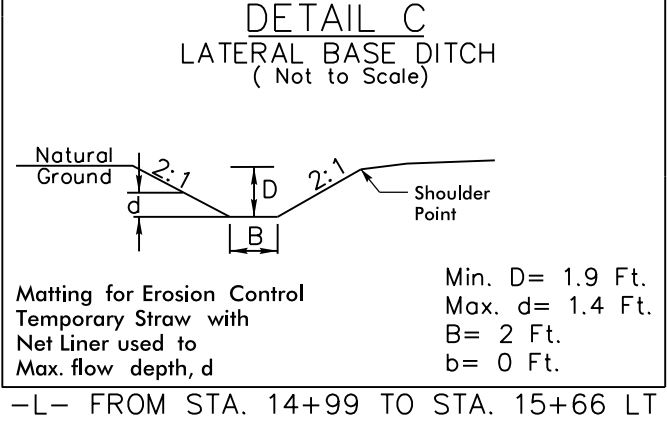
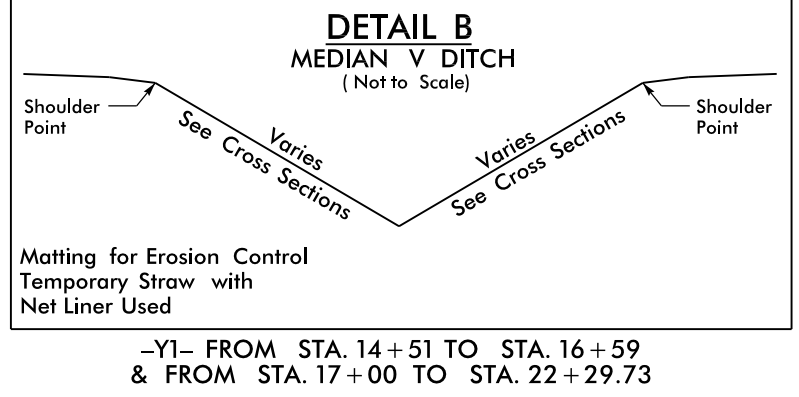
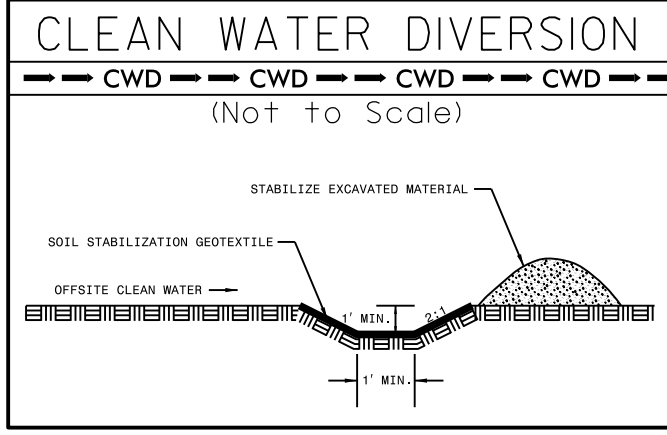
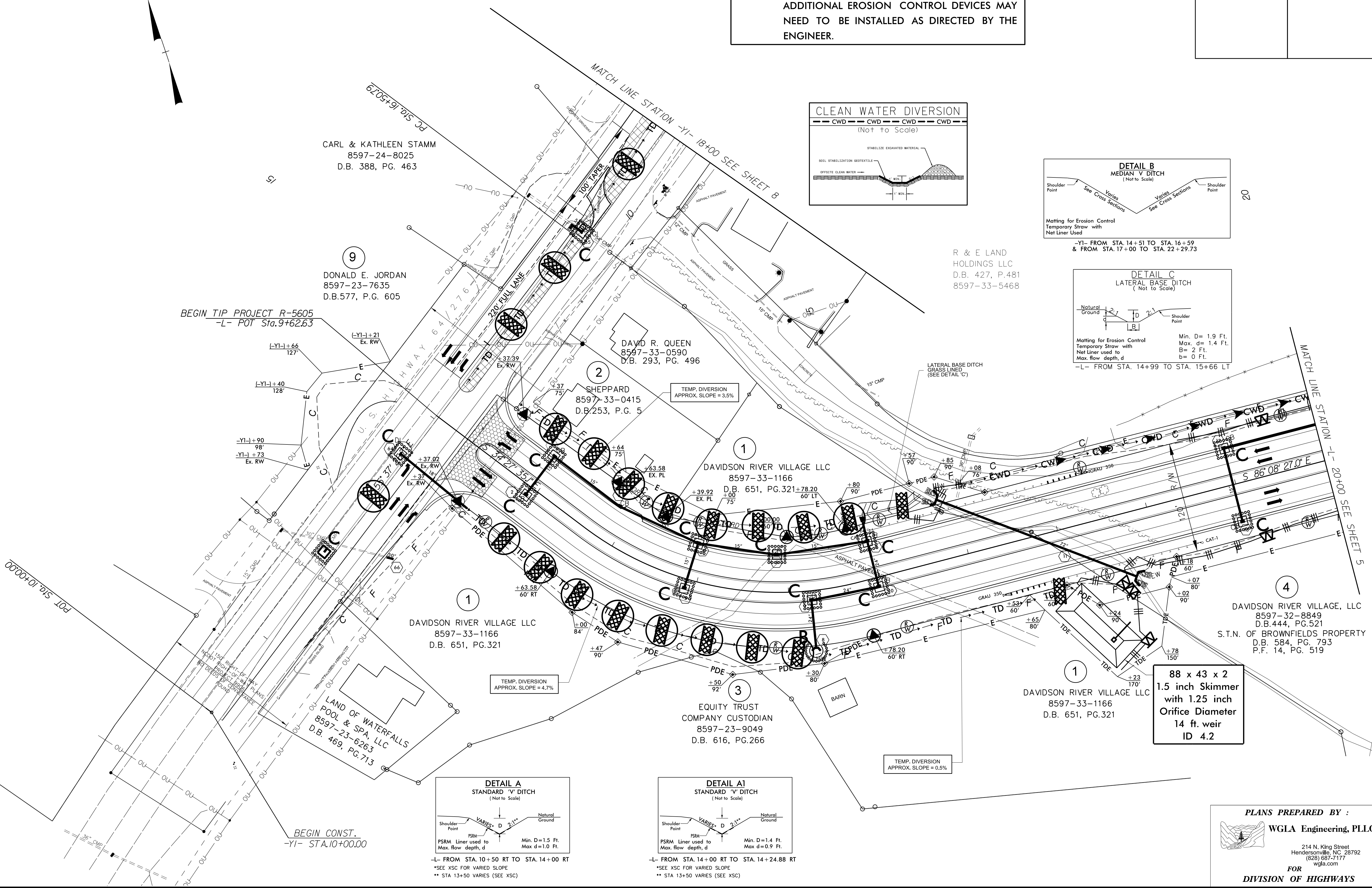


PROJECT REFERENCE NO. <i>R-5605</i>	SHEET NO. <i>EC-9/CONST.4</i>
RW SHEET NO.	
ROADWAY DESIGN ENGINEER	HYDRAULICS ENGINEER

NOTES: ANY DEVIATION FROM OPTIONS GIVEN WILL REQUIRE PRIOR APPROVAL BY ENGINEER.

ADDITIONAL EROSION CONTROL DEVICES MAY NEED TO BE INSTALLED AS DIRECTED BY THE ENGINEER.



88 x 43 x 2
1.5 inch Skimmer
with 1.25 inch
Orifice Diameter
14 ft. weir
ID 4.2

PLANS PREPARED BY :

WGLA Engineering, PLLC

214 N. King Street
Hendersonville, NC 28792
(828) 687-7177
wglac.com

FOR
DIVISION OF HIGHWAYS