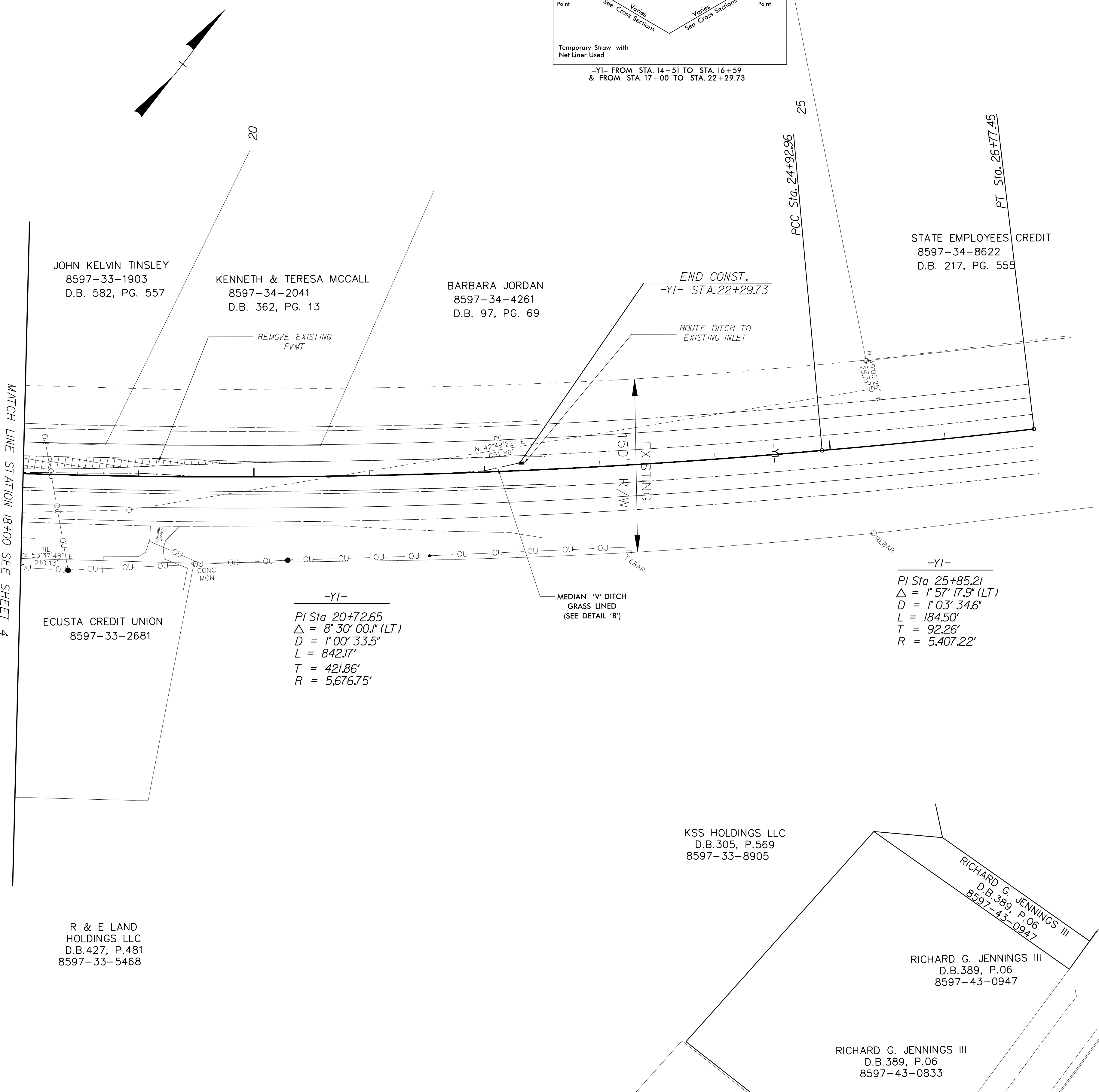
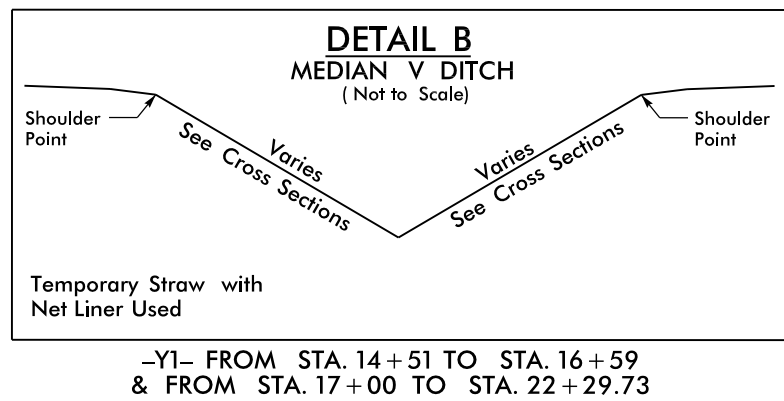


PROJECT REFERENCE NO. R-5605	SHEET NO. 8
RW SHEET NO.	
ROADWAY DESIGN ENGINEER 12/23/2015 THOMAS JONES	HYDRAULICS ENGINEER 12/22/2015 DANA J. BOLLEN
DocuSigned by: Thomas Jones III SEAL 023091	DocuSigned by: Dana J. Bollen SEAL 28945



MATCH LINE STATION 18+00 SEE SHEET 4

JOHN KELVIN TINSLEY
8597-33-1903
D.B. 582, PG. 557

KENNETH & TERESA MCCALL
8597-34-2041
D.B. 362, PG. 13

BARBARA JORDAN
8597-34-4261
D.B. 97, PG. 69

STATE EMPLOYEES CREDIT
8597-34-8622
D.B. 217, PG. 555

ECUSTA CREDIT UNION
8597-33-2681

-YI-
PI Sta 20+72.65
Δ = 8' 30' 00.1" (LT)
D = 1' 00' 33.5"
L = 842.17'
T = 421.86'
R = 5,676.75'

MEDIAN 'V' DITCH
GRASS LINED
(SEE DETAIL 'B')

-YI-
PI Sta 25+85.21
Δ = 1' 57' 17.9" (LT)
D = 1' 03' 34.6"
L = 184.50'
T = 92.26'
R = 5,407.22'

KSS HOLDINGS LLC
D.B. 305, P. 569
8597-33-8905

RICHARD G. JENNINGS III
D.B. 389, P. 06
8597-43-0947

RICHARD G. JENNINGS III
D.B. 389, P. 06
8597-43-0947

RICHARD G. JENNINGS III
D.B. 389, P. 06
8597-43-0833

R & E LAND
HOLDINGS LLC
D.B. 427, P. 481
8597-33-5468

REMOVAL OF EXISTING PAVEMENT

SEE SHEET 11 FOR PROFILE

PLANS PREPARED BY :

WGLA Engineering, PLLC

214 N. King Street
Hendersonville, NC 28792
(828) 687-7177
wgla.com

FOR
DIVISION OF HIGHWAYS

21 DEC 2015 16:59 D:\DRV\micr\station\R5605_Rdy_psh8.dgn