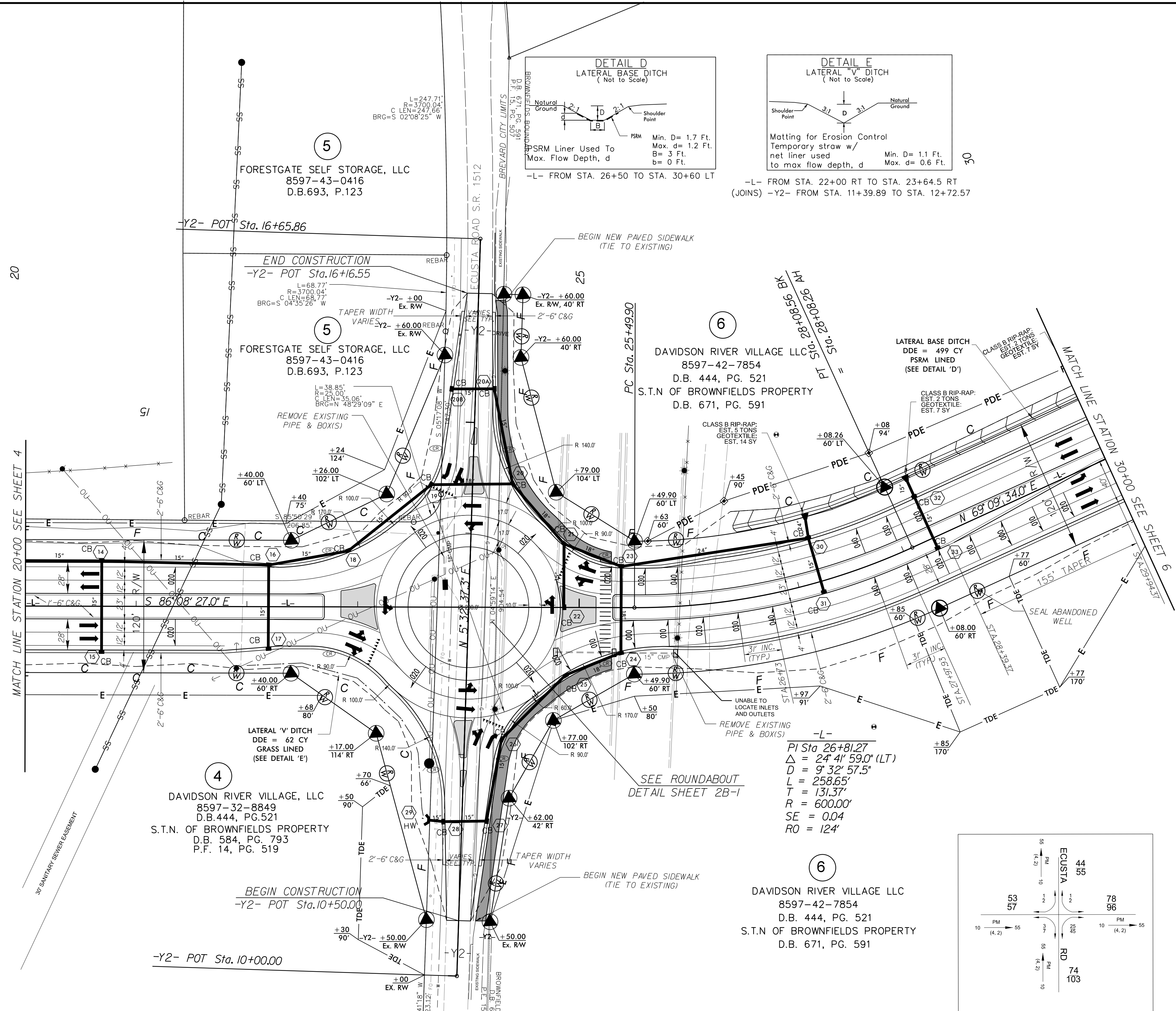
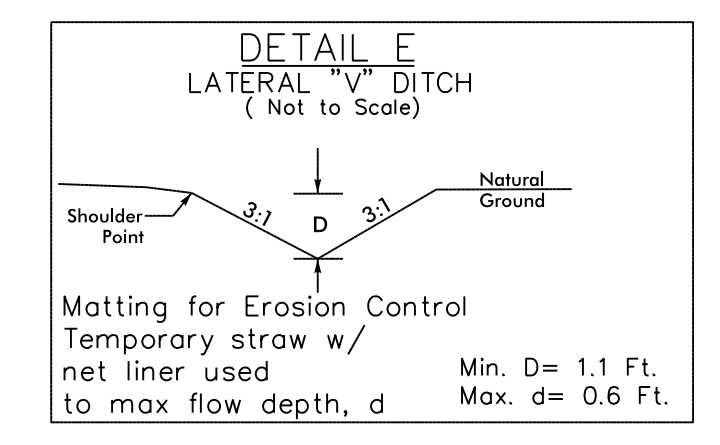
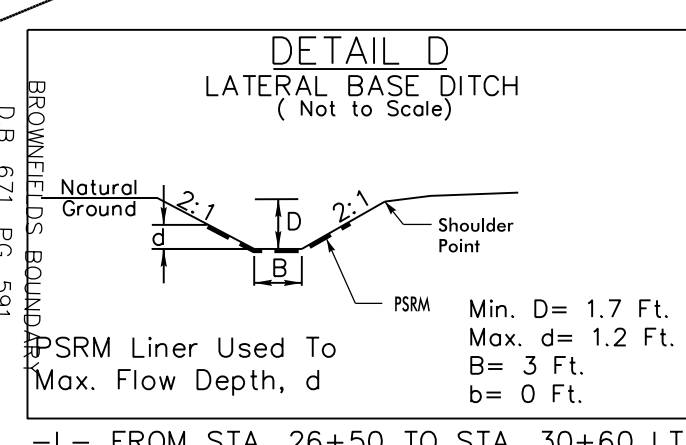
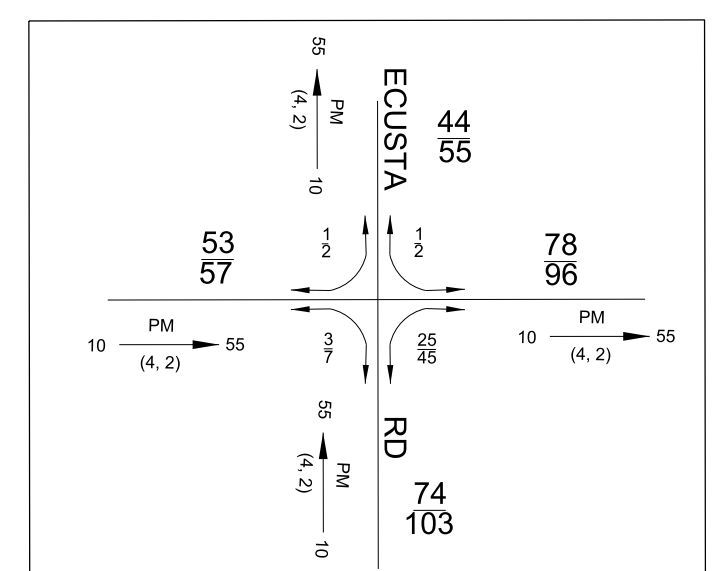


PROJECT REFERENCE NO. <i>R-5605</i>	SHEET NO. 5
RW SHEET NO.	
ROADWAY DESIGN ENGINEER 12/23/2015	HYDRAULICS ENGINEER 12/22/2015
DocuSigned by: <i>Thomas Jones III</i>	DocuSigned by: <i>Dana J. Bolden</i>



SEE ROUNDABOUT  
DETAIL SHEET 2B-1

-L-  
PI Sta. 26+81.27  
 $\Delta = 24' 41'' 59.0''$  (LT)  
 $D = 9' 32'' 57.5''$   
 $L = 258.65'$   
 $T = 131.37'$   
 $R = 600.00'$   
 $SE = 0.04$   
 $RO = 124'$



2016 AVERAGE ANNUAL  
2036 DAILY TRAFFIC  
NOTE: ADT IN HUNDREDS

SEE SHEET 2B-1 FOR ROUNDABOUT DETAIL  
SEE SHEET 9 FOR PROFILE

PLANS PREPARED BY :  
 WGLA Engineering, PLLC  
214 N. King Street  
Hendersonville, NC 28792  
(828) 687-7177  
wglac.com  
FOR  
DIVISION OF HIGHWAYS

5/14/1999  
5/14/2015 13:41 DRV:\micross\ta\ton\RF5605\_Rdly\_psh5.dgn  
10:58:33 AM