

-L- SR 1328 HAYSTACK RD.

***DESIGN EXCEPTION REQUIRED FOR VERTICAL CURVE K-VALUES AND ASSOCIATED SSD.**

PROJECT REFERENCE NO. **B-5173** SHEET NO. **6**

DOCUMENT NOT CONSIDERED FINAL UNLESS ALL SIGNATURES COMPLETED

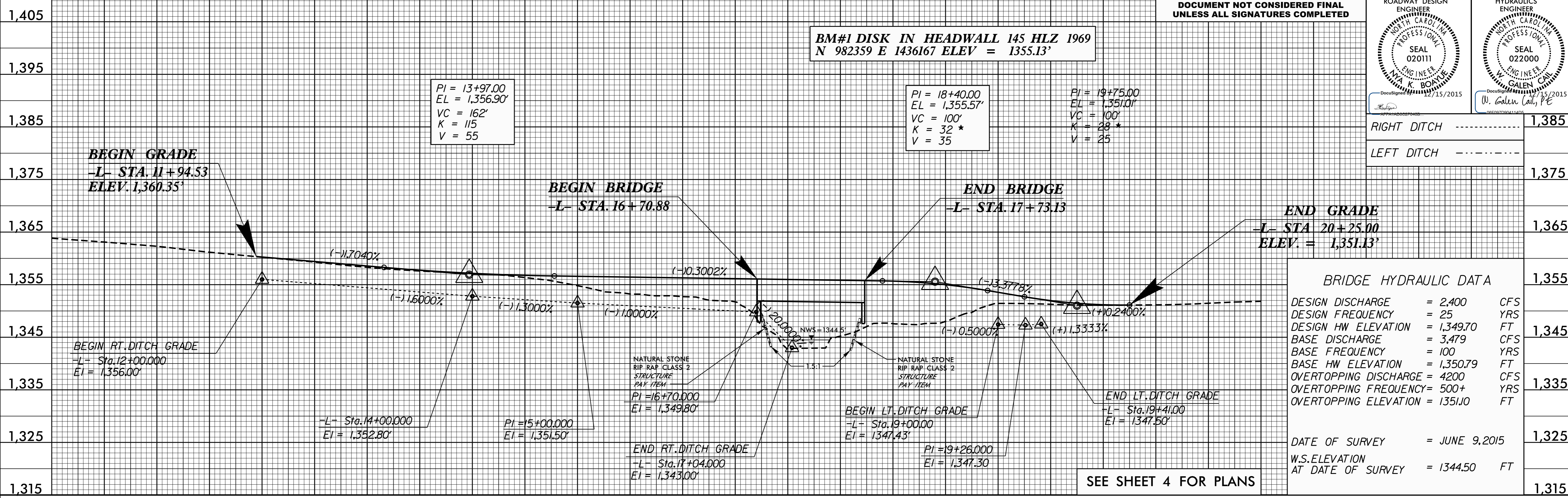
ROADWAY DESIGN ENGINEER NORTH CAROLINA PROFESSIONAL SEAL 020111 W. K. BOYALUK ENGINEER 11/15/2015	HYDRAULICS ENGINEER NORTH CAROLINA PROFESSIONAL SEAL 022000 W. GALEN CALY ENGINEER 11/15/2015
--	---

**BM#1 DISK IN HEADWALL 145 HLZ 1969
N 982359 E 1436167 ELEV = 1355.13'**

PI = 13+97.00
EL = 1,356.90'
VC = 162'
K = 115
V = 55

PI = 18+40.00
EL = 1,355.57'
VC = 100'
K = 32 *
V = 35

PI = 19+75.00
EL = 1,351.01'
VC = 100'
K = 28 *
V = 25



BRIDGE HYDRAULIC DATA	
DESIGN DISCHARGE	= 2,400 CFS
DESIGN FREQUENCY	= 25 YRS
DESIGN HW ELEVATION	= 1,349.70 FT
BASE DISCHARGE	= 3,479 CFS
BASE FREQUENCY	= 100 YRS
BASE HW ELEVATION	= 1,350.79 FT
OVERTOPPING DISCHARGE	= 4,200 CFS
OVERTOPPING FREQUENCY	= 500+ YRS
OVERTOPPING ELEVATION	= 1,351.0 FT

DATE OF SURVEY = JUNE 9, 2015
W.S. ELEVATION AT DATE OF SURVEY = 1344.50 FT

SEE SHEET 4 FOR PLANS

5/28/99

30-NOV-2015 12:19 \\B-5173-Rd1-p1.6.dgn