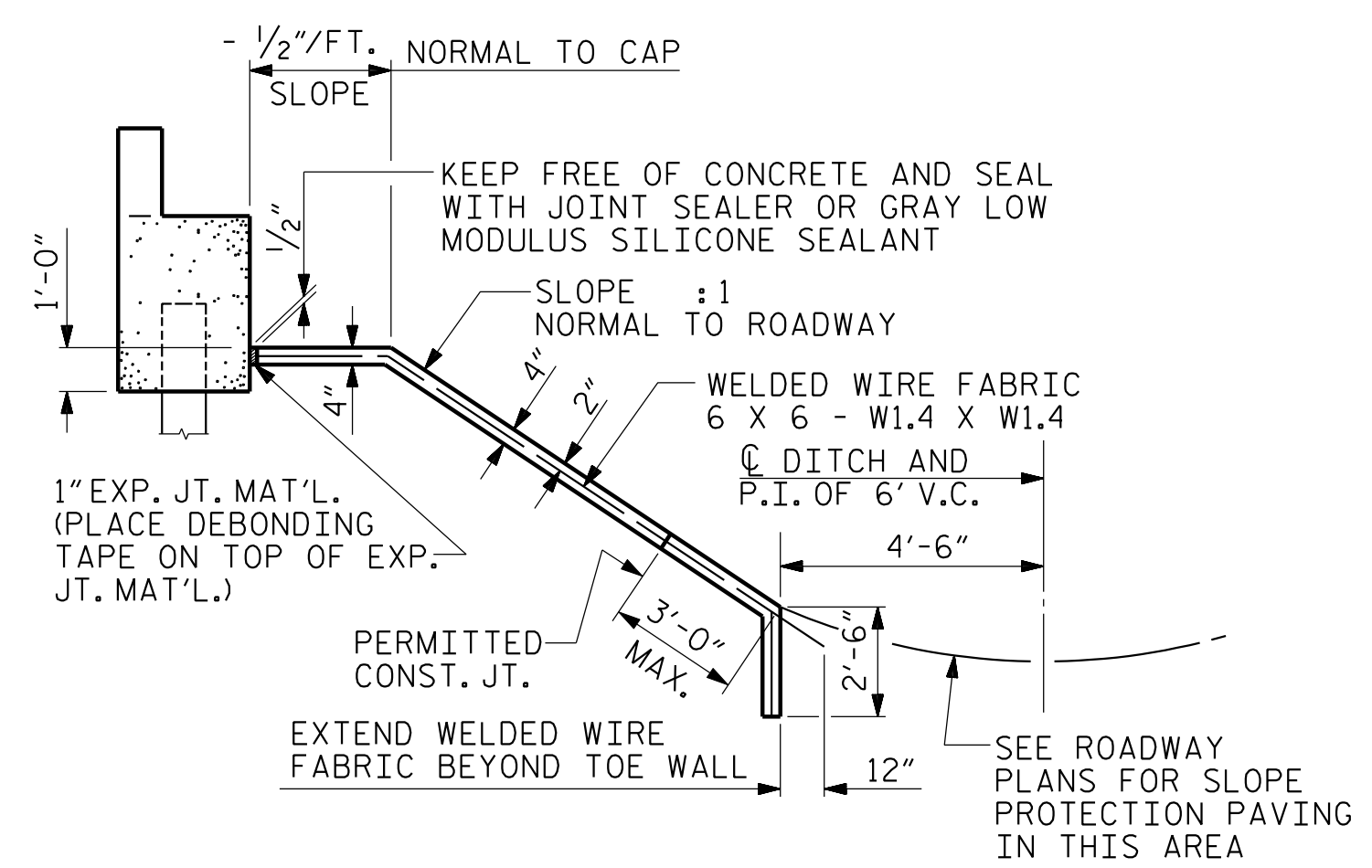


PLAN



SECTION ALONG C ROADWAY WHEN FILL CATCHES IN DITCH

DETAILS FOR ALTERNATE "A"

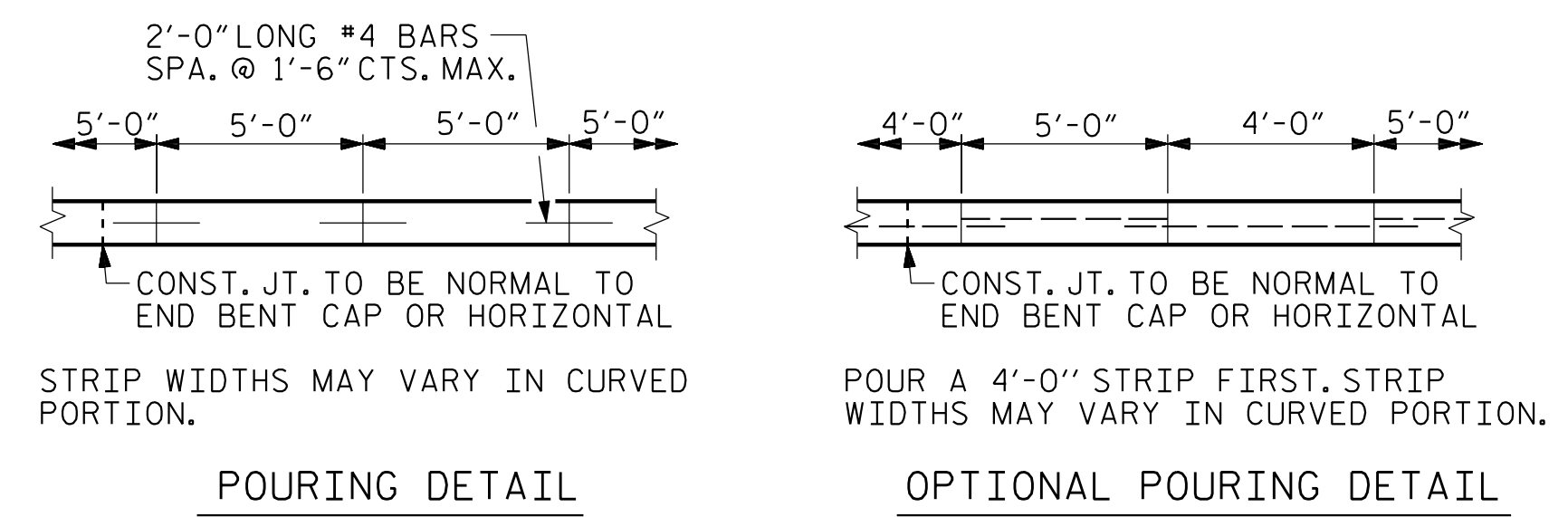
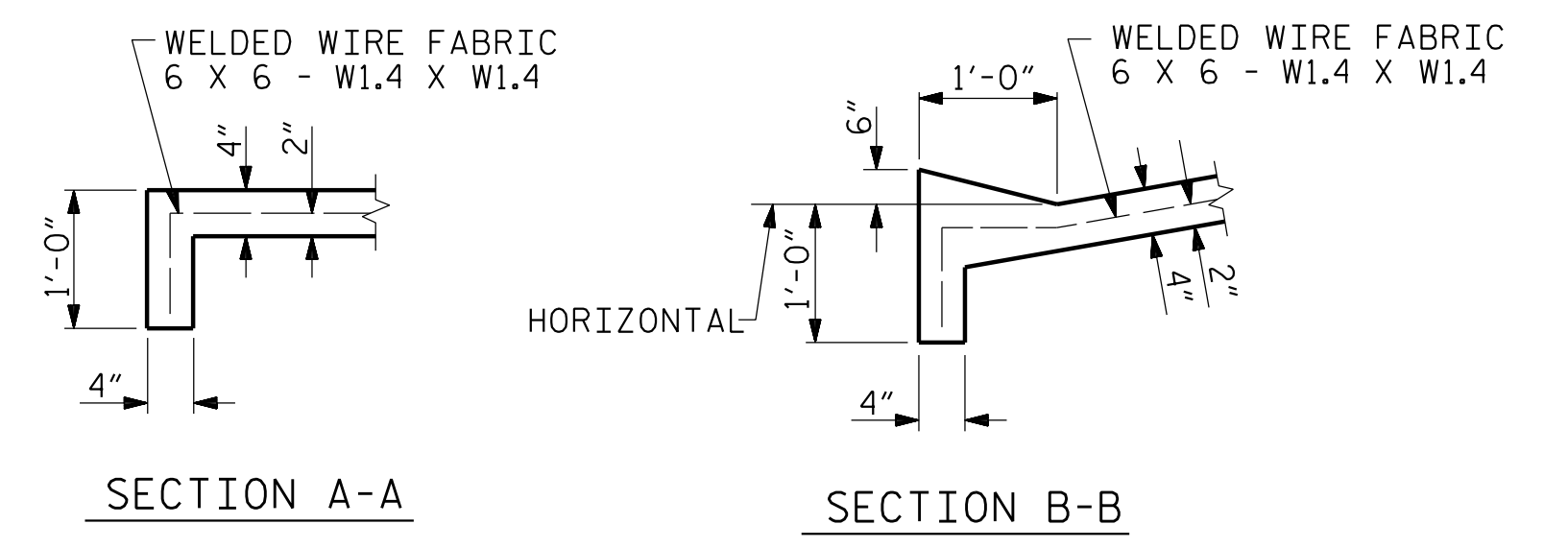
GENERAL NOTES

SLOPE PROTECTION SHALL BE PLACED UNDER THE ENDS OF THE BRIDGE AS SHOWN IN THE DETAILS. STRAIGHT EDGING WILL NOT BE REQUIRED UNLESS, IN THE OPINION OF THE ENGINEER, VISUAL INSPECTION INDICATES A NEED FOR IT. MEASUREMENT AND PAYMENT SHALL BE AS PRESCRIBED IN SECTION 462 OF THE STANDARD SPECIFICATIONS. FOR BERM WIDTH, SEE GENERAL DRAWING.

SLOPE PROTECTION SHALL CONSIST OF 4" POURED-IN-PLACE CONCRETE PAVING AS SHOWN IN THE DETAILS ON THIS SHEET. CONCRETE SHALL BE CLASS "B". THE CONCRETE SURFACE SHALL BE FLOATED WITH A WOODEN FLOAT AND FINISHED. WELDED WIRE FABRIC REINFORCING SHALL BE 6 X 6 - W1.4 X W1.4, 60" WIDE. SLOPE PROTECTION SHALL BE POURED IN 5' STRIPS AS SHOWN IN THE "POURING DETAIL" WITH 2'-0" LONG #4 BARS PLACED ALONG THE SLOPE BETWEEN STRIPS AT 1'-6" MAXIMUM SPACING. SLOPE PROTECTION MAY BE POURED IN ALTERNATE 4' AND 5' STRIPS AS SHOWN IN THE "OPTIONAL POURING DETAIL" WITH ADJACENT RUNS OF WELDED WIRE FABRIC LAPPING AT LEAST 6". THE COST OF THE WELDED WIRE FABRIC AND #4 BARS, IF USED, SHALL BE INCLUDED IN THE CONTRACT UNIT PRICE BID PER SQUARE YARD FOR SLOPE PROTECTION.

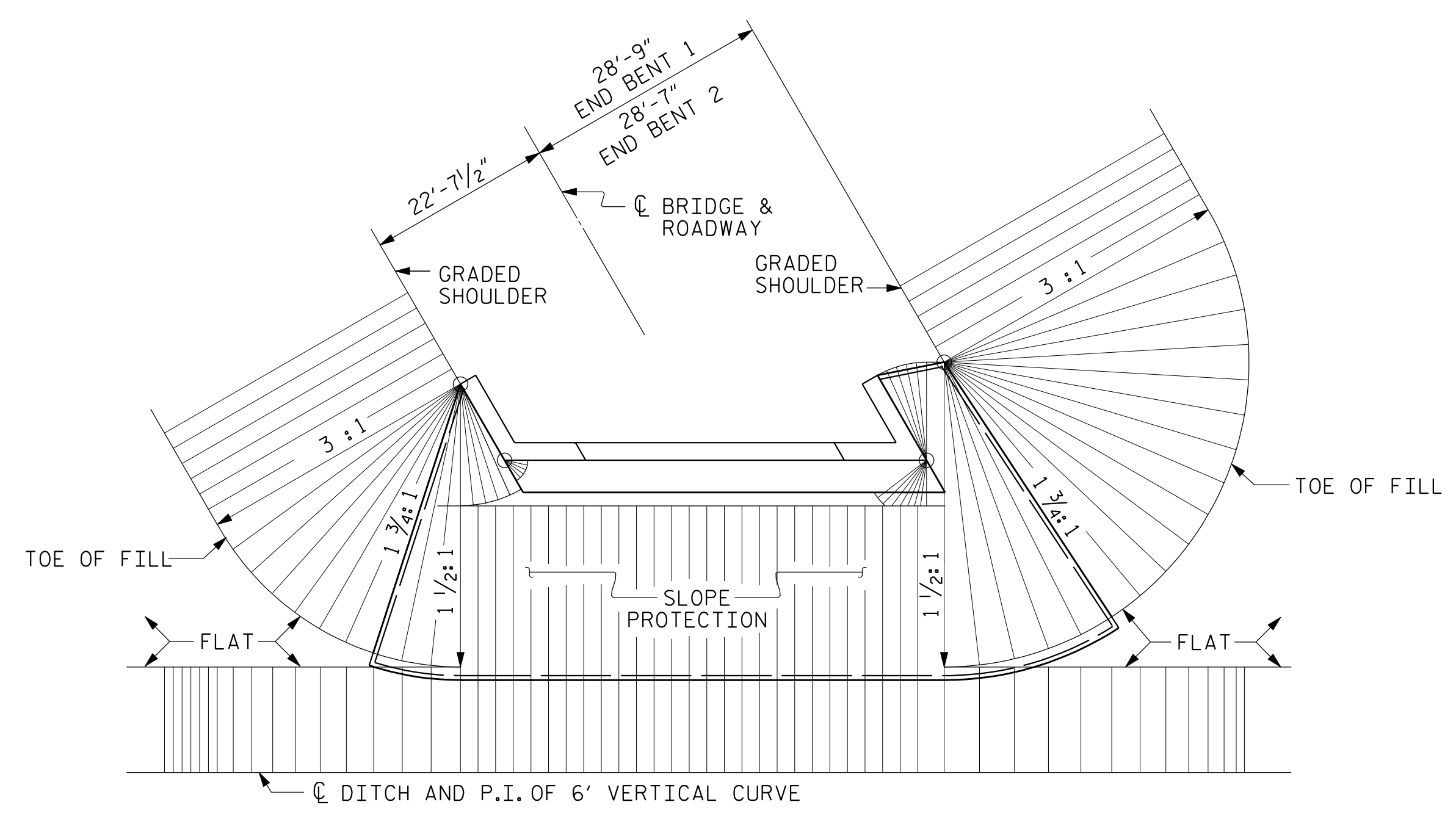
BRIDGE @ STA. 24+06.36 -L-	4 INCH SLOPE PROTECTION	* WELDED WIRE FABRIC 60 INCHES WIDE
	SQUARE YARDS	APPROX. L.F.
END BENT 1	209	420
END BENT 2	209	420

* QUANTITY SHOWN IS BASED ON 5' POURS.



POURING DETAIL

OPTIONAL POURING DETAIL



PLAN - END BENT WITH SWEEP BACK WINGS - SKEWED

(1 1/2 : 1 SLOPE)

PROJECT NO. W-5518
COLUMBUS COUNTY
STATION: 24+06.36 -L- POT

PLANS PREPARED BY:
MULKEY
ENGINEERS & CONSULTANTS
PO BOX 23127
RALEIGH, NC 27626
(919) 851-1912 FAX
(919) 851-1912
WWW.MULKEYINC.COM
NO LICENSE NO. 0-1051

THIS STANDARD DRAWING REVIEWED & ADOPTED FOR USE AT THE REFERENCED LOCATION BY THE UNDERSIGNED:

10/2/2015

STATE OF NORTH CAROLINA
DEPARTMENT OF TRANSPORTATION
RALEIGH

STANDARD
SLOPE PROTECTION
DETAILS

REVISIONS						SHEET NO.
NO.	BY:	DATE:	NO.	BY:	DATE:	S-30
1			3			TOTAL SHEETS
2			4			33

ASSEMBLED BY : W.B. ALLEN	DATE : 7/15
CHECKED BY : Z.H. BROWN	DATE : 7/15
DRAWN BY : ELR 5/92	REV. 5/1/06 TLA/GM
CHECKED BY : GRP 6/92	REV. 10/1/11 MAA/GM
	REV. 12/21/11 MAA/GM

10/2/2015 4:54:49 PM R:\Structures\W5518.SMU.SP.01.dgn