

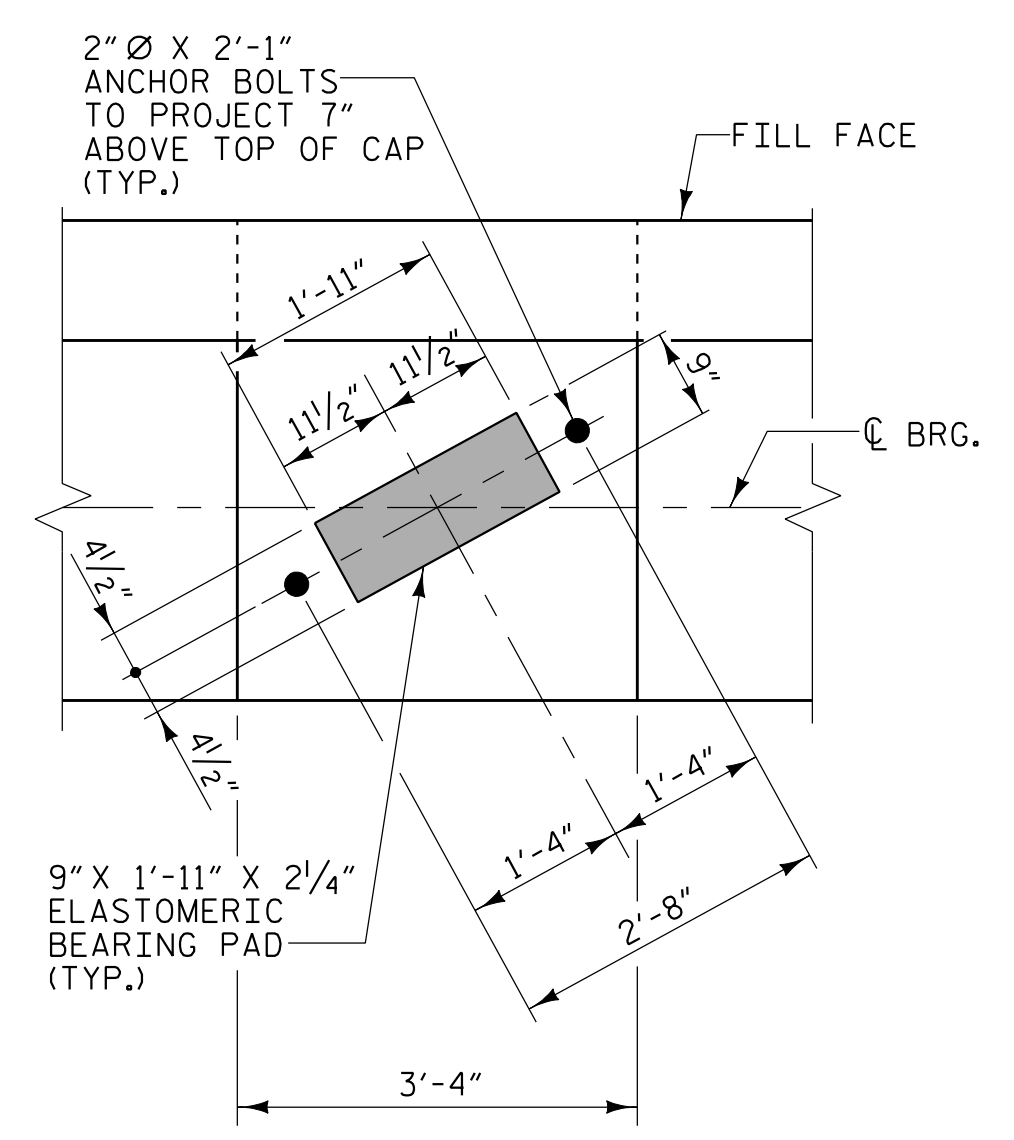
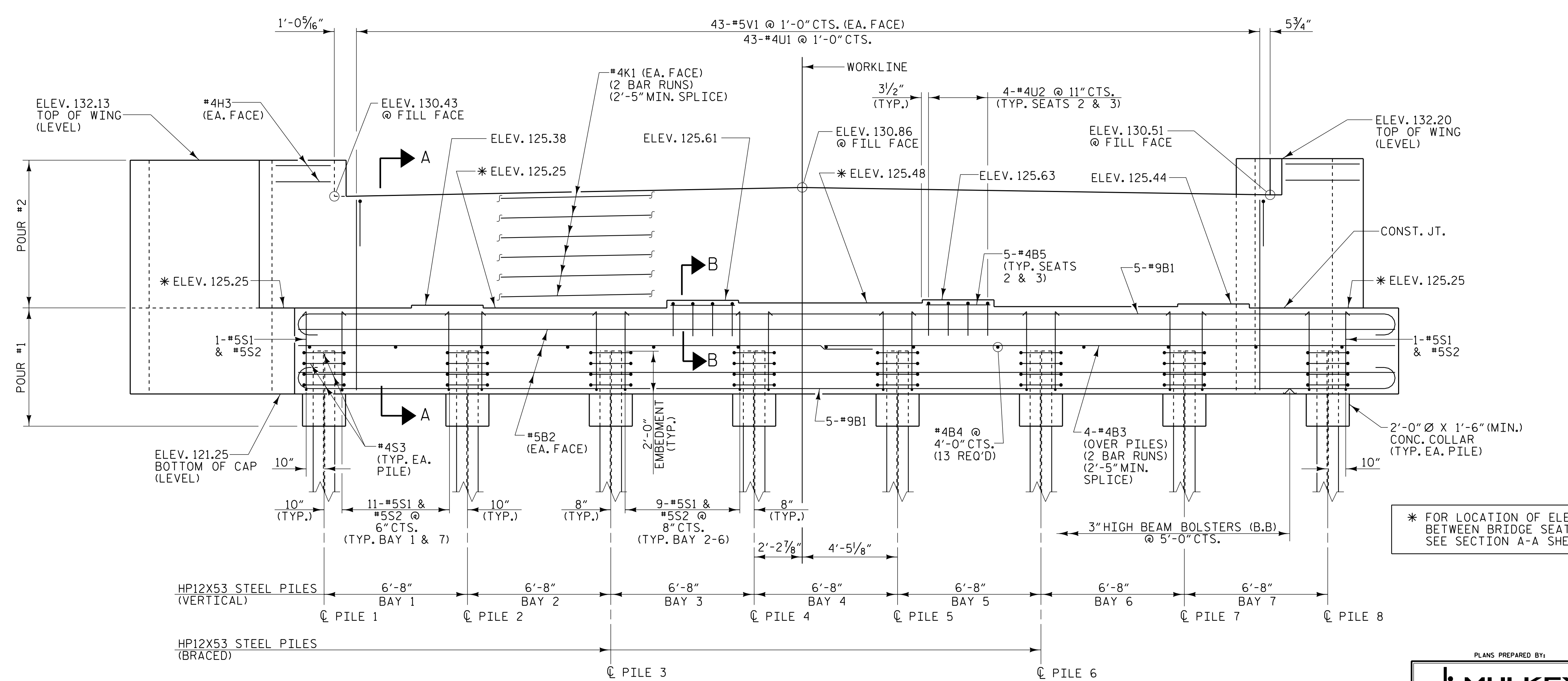
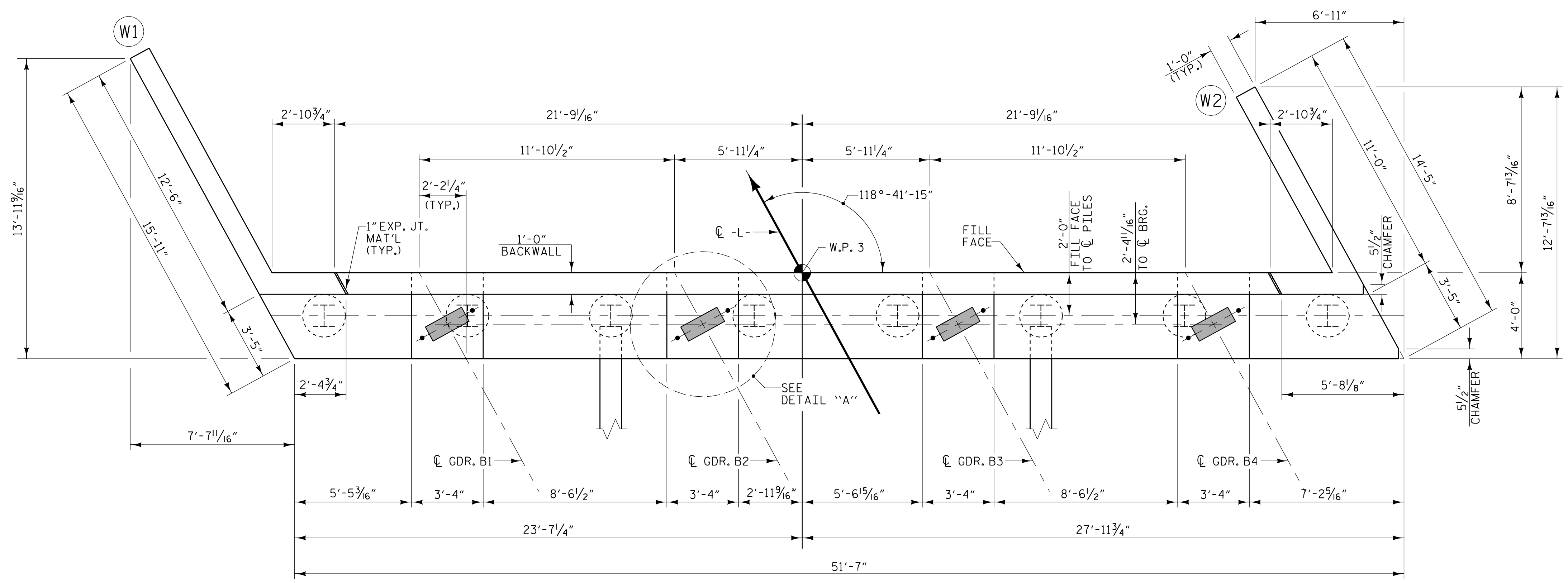
NOTES

STIRRUPS AND U2 BARS IN THE CAP MAY BE SHIFTED AS NECESSARY TO CLEAR ANCHOR BOLTS.

BACKWALL SHALL BE PLACED BEFORE APPLYING THE EPOXY PROTECTIVE COATING.

THE TOP SURFACE AREA OF THE END BENT CAP SHALL BE CURED IN ACCORDANCE WITH THE STANDARD SPECIFICATIONS EXCEPT THAT THE MEMBRANE CURING COMPOUND METHOD SHALL NOT BE USED.

THE TOP SURFACE OF THE END BENT CAP EXCEPT THE BRIDGE SEAT BUILDUPS SHALL BE SLOPED TRANSVERSELY FROM THE FILL FACE TO THE BACK FACE AT THE RATE OF 2%.



PROJECT NO. W-5518
COLUMBUS COUNTY
 STATION: 24+06.36 -L- POT

SHEET 1 OF 3

STATE OF NORTH CAROLINA
 DEPARTMENT OF TRANSPORTATION
 RALEIGH

SUBSTRUCTURE
 END BENT 2

* FOR LOCATION OF ELEVATIONS BETWEEN BRIDGE SEAT BUILD-UPS. SEE SECTION A-A SHEET 3 OF 3.

PLANS PREPARED BY:

MULKEY
 ENGINEERS & CONSULTANTS
 10100 W. 29th ST
 RALEIGH, N.C. 27636
 (919) 811-1111
 10100 W. 29th ST, 2ND FLOOR
 WWW.MULKEYINC.COM
 NC LICENSE NO. 0-1021

DESIGNED BY:
 L. K. AUSTIN
 10/2/2015

REVISIONS						SHEET NO.
NO.	BY:	DATE:	NO.	BY:	DATE:	TOTAL SHEETS
1			3			33
2			4			

DRAWN BY: W. B. ALLEN DATE: 2/15
 CHECKED BY: Z. H. BROWN DATE: 3/15
 DESIGN ENGINEER OF RECORD: L. K. AUSTIN DATE: 8/15

10/2/2015 1:44:33 PM R:\Structures\W5518\SMU\EZ_01.dgn