

-L-
 PI Sta 35+09.29
 $\Delta = 1' 43" 16.7" (RT)$
 $D = 0' 35" 13.4"$
 $L = 293.21'$
 $T = 146.62'$
 $R = 9,760.00'$
 SUPER = NC
 DS = 60MPH

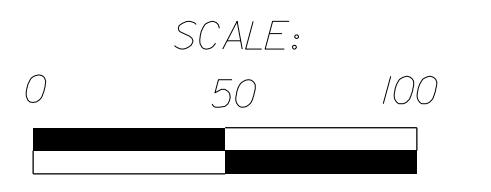
HINDE ENGINEERING
 License No. C-2639
 401 Harrison Oaks Blvd., Suite 145 Cary, NC 27513

MULKEY ENGINEERS & CONSULTANTS
 PO Box 33127
 Raleigh, N.C. 27636
 (919) 851-1912
 (919) 851-1918 (FAX)
 WWW.MULKEYINC.COM
 NC License No. C-1021

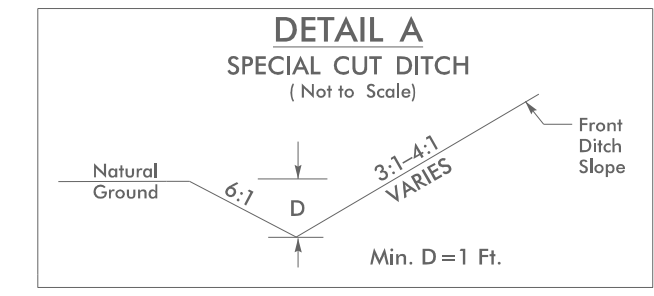
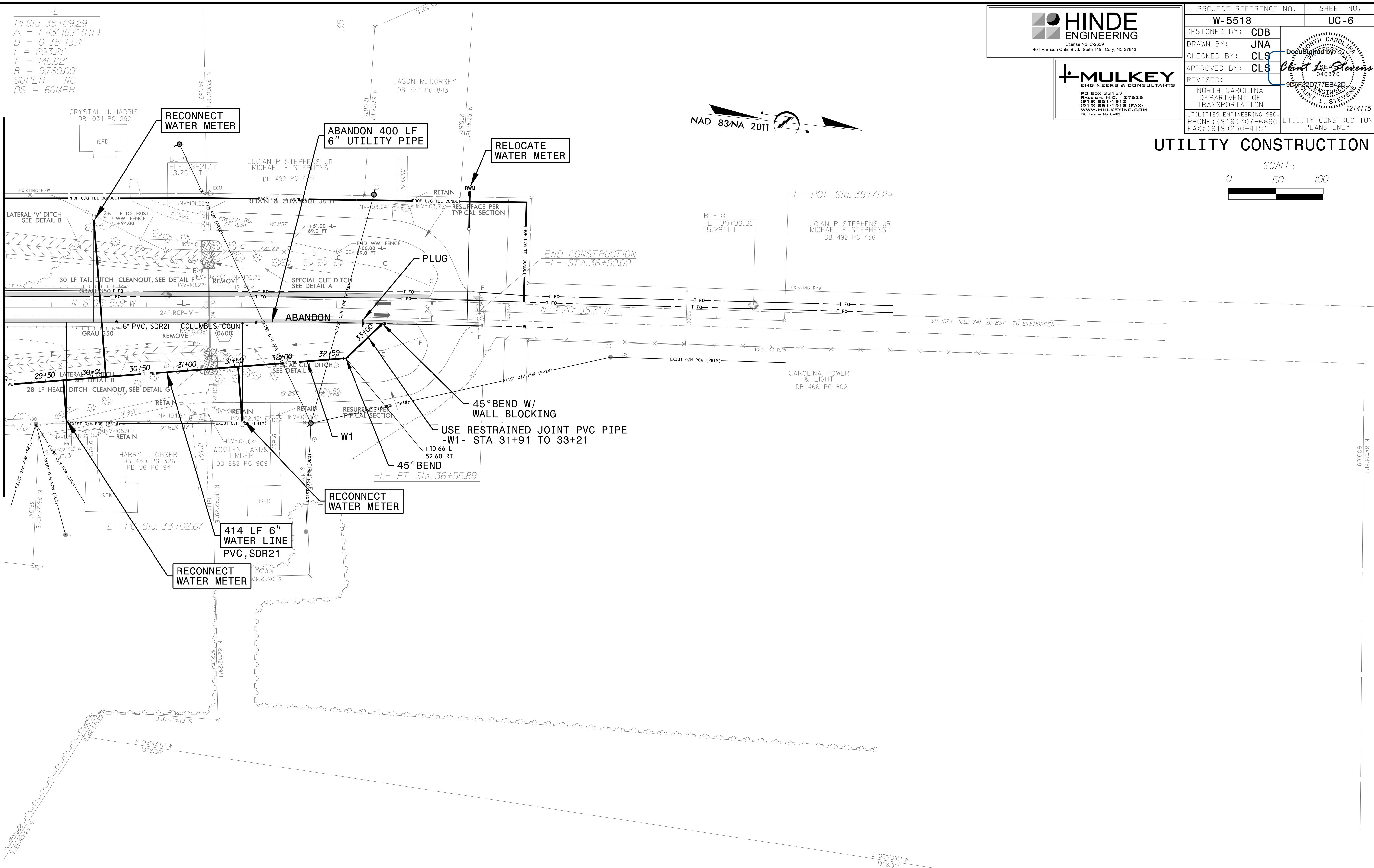
PROJECT REFERENCE NO. W-5518	SHEET NO. UC-6
DESIGNED BY: CDB	
DRAWN BY: JNA	
CHECKED BY: CLS	
APPROVED BY: CLS	
REVISED:	NORTH CAROLINA DEPARTMENT OF TRANSPORTATION UTILITIES ENGINEERING SEC. PHONE: (919) 707-6690 FAX: (919) 250-4151
UTILITY CONSTRUCTION PLANS ONLY	



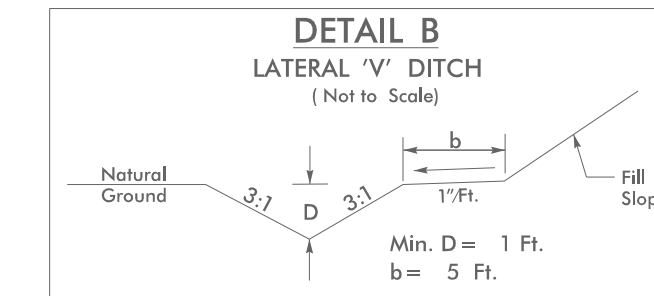
UTILITY CONSTRUCTION



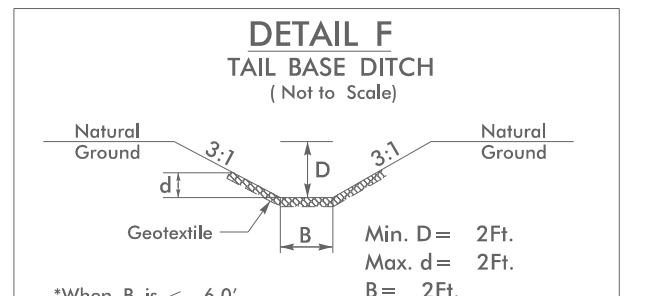
MATCHLINE SHEET UC-5
-L- STA. 31+50.00



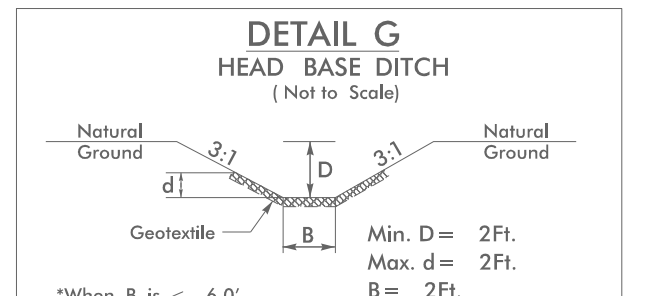
-L- STA. 33+65.00 TO STA. 35+00.00 LT
 -L- STA. 33+67.00 TO STA. 35+00.00 RT



FROM STA. 25+50.00 TO STA. 33+67.00 RT; DDE=740 CY
 FROM STA. 26+05.00 TO STA. 28+00.00 LT; DDE=150 CY
 FROM STA. 29+50.00 TO STA. 33+65.00 LT; DDE=550 CY



*When B is < 6.0'
 DDE=14 CY
 Type of Liner=19 TON CLASS B Rip-Rap
 Geotextile=53 SY
 -L- STA. 33+65 LT



*When B is < 6.0'
 DDE=13 CY
 Type of Liner=17.5 TON CLASS B Rip-Rap
 Geotextile=49 SY
 -L- STA. 33+67 RT

24-DEC-2015 09:24 PROJECTS\2014\A20141202\00_Mulkey - Chadbourn-W-5518\Design\Utilities\Engineering\UC\Projects\W5518-ut-rcdy6_UC06_psh.dgn
 24-DEC-2015 09:24 PROJECTS\2014\A20141202\00_Mulkey - Chadbourn-W-5518\Design\Utilities\Engineering\UC\Projects\W5518-ut-rcdy6_UC06_psh.dgn
 24-DEC-2015 09:24 PROJECTS\2014\A20141202\00_Mulkey - Chadbourn-W-5518\Design\Utilities\Engineering\UC\Projects\W5518-ut-rcdy6_UC06_psh.dgn