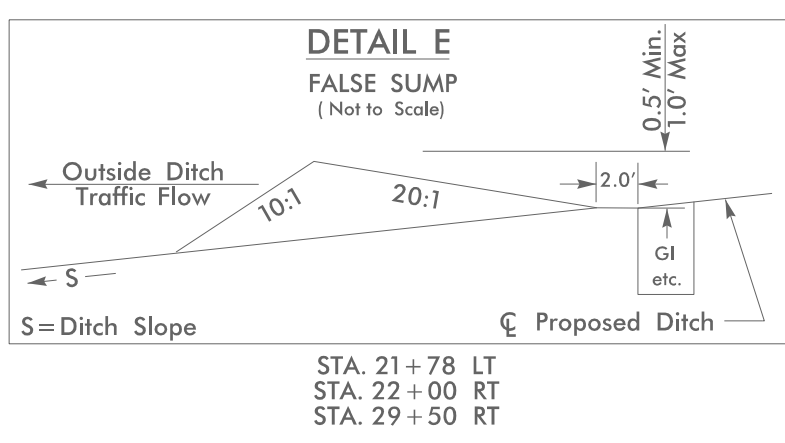
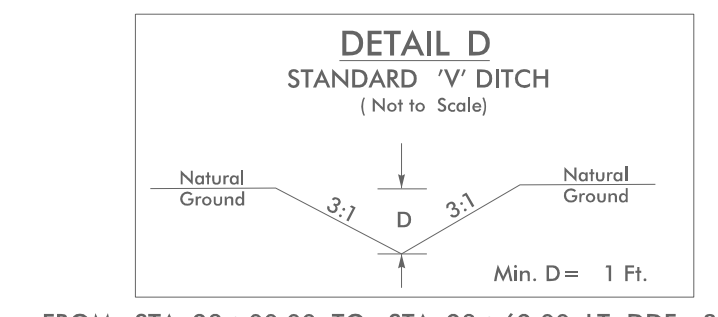
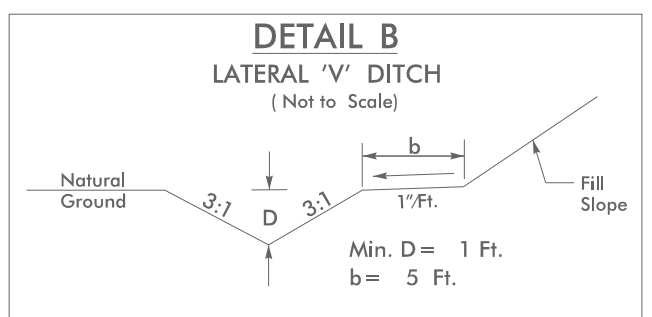
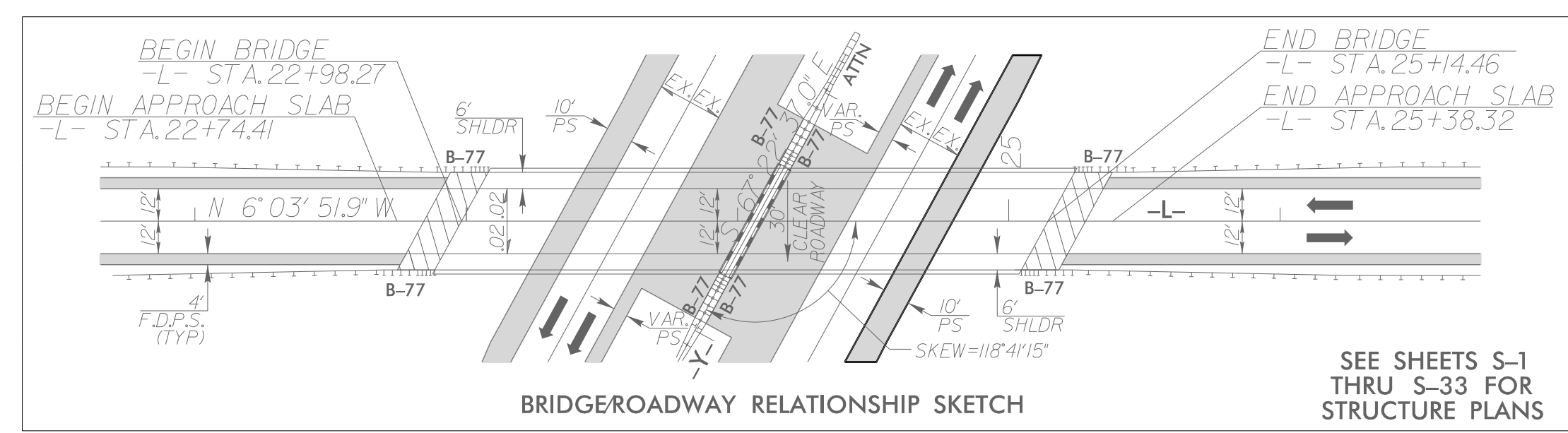


HINDE ENGINEERING
 License No. C-2639
 401 Harrison Oaks Blvd., Suite 145 Cary, NC 27513

MULKEY ENGINEERS & CONSULTANTS
 PO Box 33127
 Raleigh, N.C. 27636
 (919) 851-1912
 (919) 851-1918 (FAX)
 WWW.MULKEYINC.COM
 NC License No. C-1021

PROJECT REFERENCE NO.	W-5518	SHEET NO.	UC-5
DESIGNED BY:	CDB		UTILITY CONSTRUCTION PLANS ONLY
DRAWN BY:	JNA		
CHECKED BY:	CLS		
APPROVED BY:	CLS		
REVISED:			
NORTH CAROLINA DEPARTMENT OF TRANSPORTATION			
UTILITIES ENGINEERING SEC. PHONE: (919) 707-6690 FAX: (919) 250-4151			

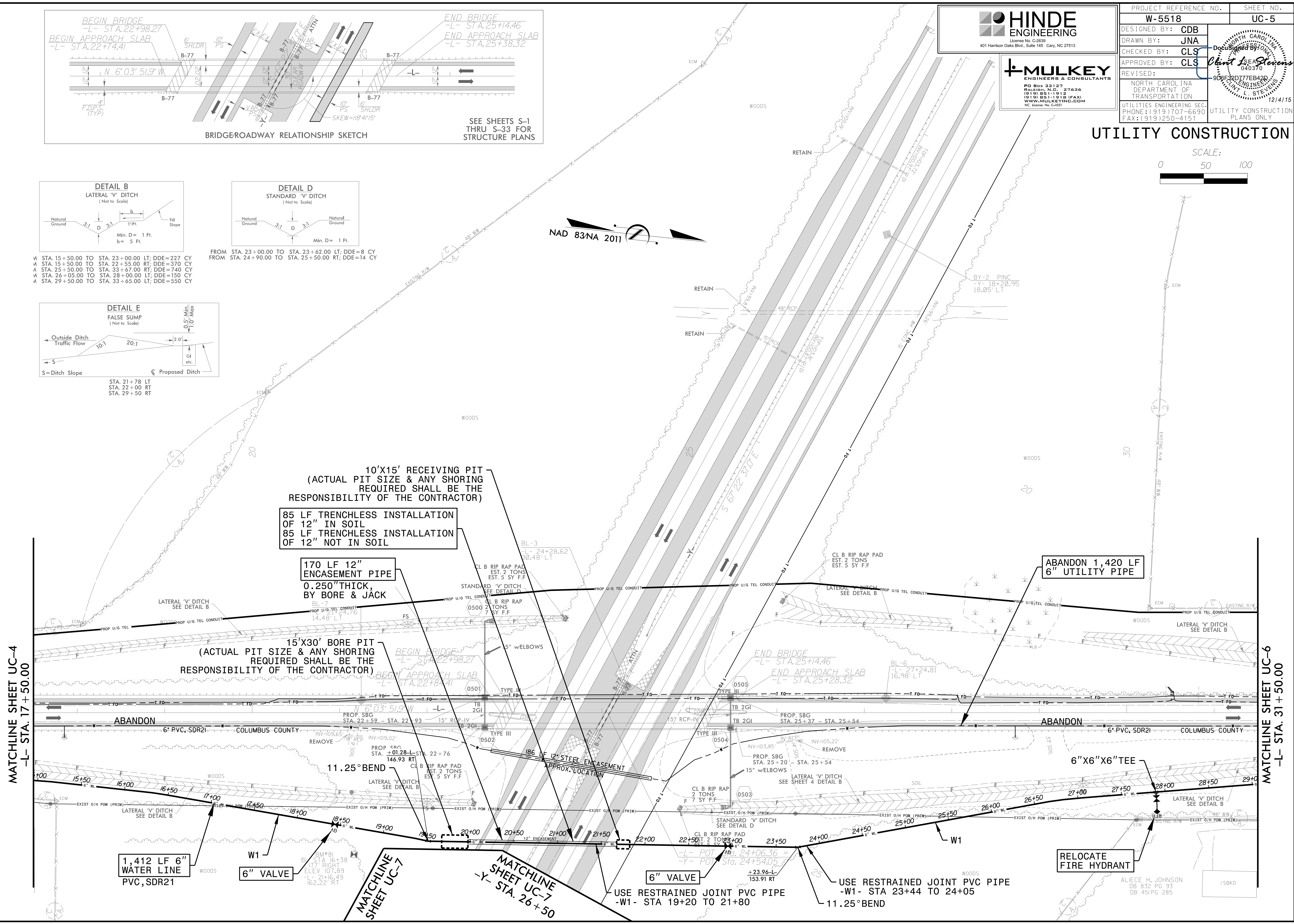
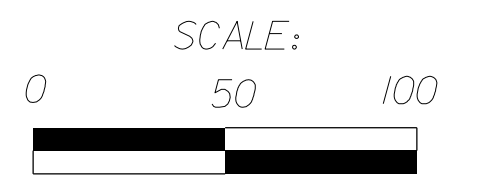


FROM STA. 23+00.00 TO STA. 23+62.00 LT; DDE=8 CY
 FROM STA. 24+90.00 TO STA. 25+50.00 RT; DDE=14 CY

W STA. 15+50.00 TO STA. 23+00.00 LT; DDE=227 CY
 W STA. 15+50.00 TO STA. 22+55.00 RT; DDE=370 CY
 A STA. 25+50.00 TO STA. 33+67.00 RT; DDE=740 CY
 W STA. 26+05.00 TO STA. 28+00.00 LT; DDE=150 CY
 A STA. 29+50.00 TO STA. 33+65.00 LT; DDE=550 CY



UTILITY CONSTRUCTION



MATCHLINE SHEET UC-4
-L- STA. 17+50.00

MATCHLINE SHEET UC-6
-L- STA. 31+50.00

MATCHLINE SHEET UC-7
-Y- STA. 26+50

24-DEC-2015 09:23 PROJECTS\2014\A20141202.00 Mulkey - Chadbourn-W-5518\Design\Utilities\Engineering\UC\Proj\W5518_ut_rdy5_UC05_psh.dgn

ALIECE H. JOHNSON
 DB 832 PG 93
 DB 451 PG 285