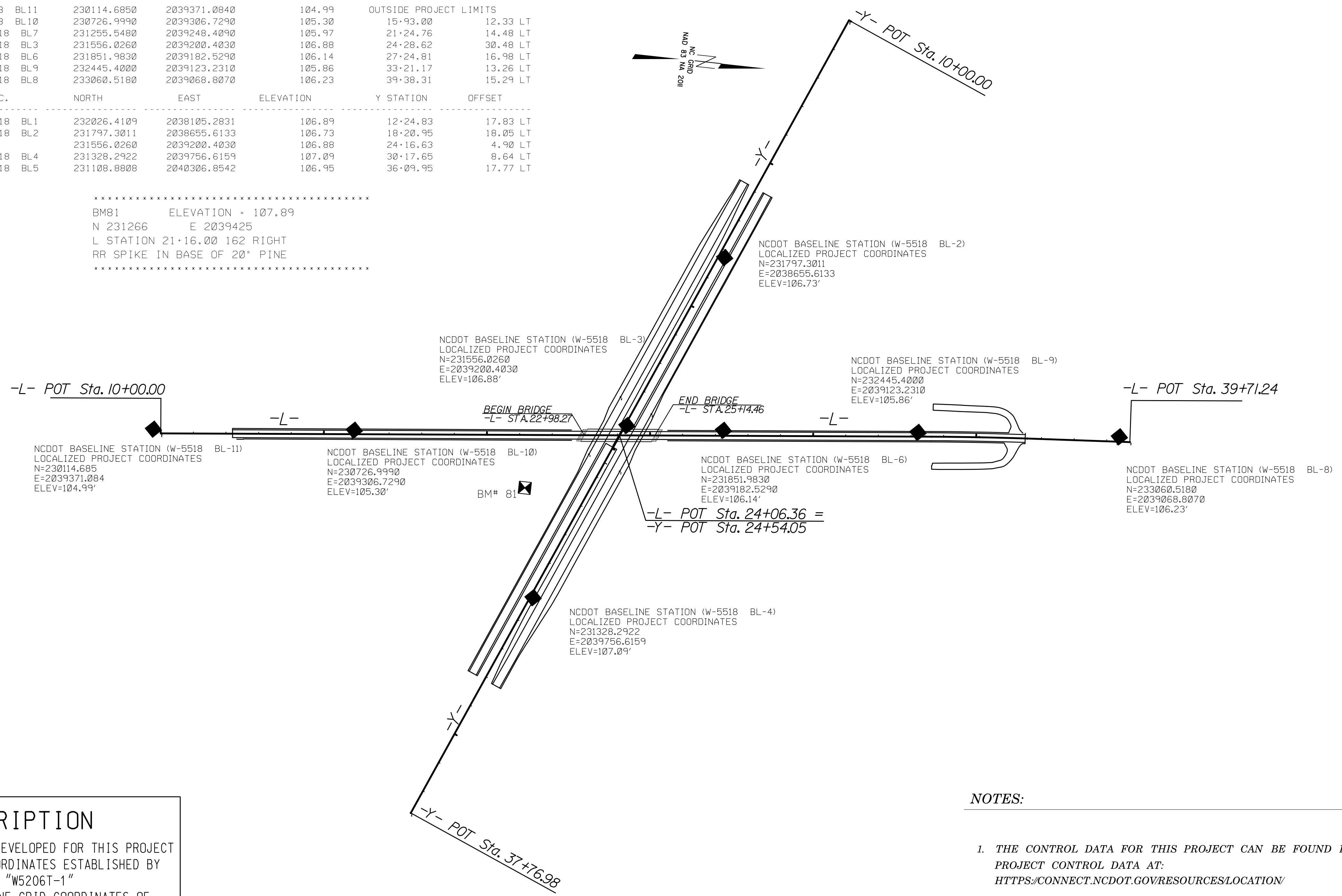


SURVEY CONTROL SHEET W-5518

BL	POINT	DESC.	NORTH	EAST	ELEVATION	L STATION	OFFSET
11	W5518	BL11	230114.6850	2039371.0840	104.99	OUTSIDE PROJECT LIMITS	
10	W5518	BL10	230726.9990	2039306.7290	105.30	15+93.00	12.33 LT
7	W5518	BL7	231255.5480	2039248.4090	105.97	21+24.76	14.48 LT
3	W5518	BL3	231556.0260	2039200.4030	106.88	24+28.62	30.48 LT
6	W5518	BL6	231851.9830	2039182.5290	106.14	27+24.81	16.98 LT
9	W5518	BL9	232445.4000	2039123.2310	105.86	33+21.17	13.26 LT
8	W5518	BL8	233060.5180	2039068.8070	106.23	39+38.31	15.29 LT

BY	POINT	DESC.	NORTH	EAST	ELEVATION	Y STATION	OFFSET
1	W5518	BL1	232026.4109	2038105.2831	106.89	12+24.83	17.83 LT
2	W5518	BL2	231797.3011	2038655.6133	106.73	18+20.95	18.05 LT
30			231556.0260	2039200.4030	106.88	24+16.63	4.90 LT
4	W5518	BL4	231328.2922	2039756.6159	107.09	30+17.65	8.64 LT
5	W5518	BL5	231108.8808	2040306.8542	106.95	36+09.95	17.77 LT

 BM81 ELEVATION = 107.89
 N 231266 E 2039425
 L STATION 21+16.00 162 RIGHT
 RR SPIKE IN BASE OF 20' PINE



DATUM DESCRIPTION

THE LOCALIZED COORDINATE SYSTEM DEVELOPED FOR THIS PROJECT IS BASED ON THE STATE PLANE COORDINATES ESTABLISHED BY NCDOT FOR MONUMENT "W5206T-1"

WITH NAD 83/NA 2011 STATE PLANE GRID COORDINATES OF NORTHING: 232252.2080(±) EASTING: 2037563.4410(±) ELEVATION: 106.7200(±)

THE AVERAGE COMBINED GRID FACTOR USED ON THIS PROJECT (GROUND TO GRID) IS: 1.00000000

THE N.C. LAMBERT GRID BEARING AND LOCALIZED HORIZONTAL GROUND DISTANCE FROM "W5206T-1" TO -L- STATION 10+00 IS S40°42'12.40"E 2788.0301

ALL LINEAR DIMENSIONS ARE LOCALIZED HORIZONTAL DISTANCES
 VERTICAL DATUM USED IS NAVD 88

- NOTES:**
- THE CONTROL DATA FOR THIS PROJECT CAN BE FOUND ELECTRONICALLY BY SELECTING PROJECT CONTROL DATA AT:
[HTTPS://CONNECT.NCDOT.GOV/RESOURCES/LOCATION/](https://connect.ncdot.gov/resources/location/)
 THE FILES TO BE FOUND ARE AS FOLLOWS:
 W-5518_LS_CONTROL.TXT
- SITE CALIBRATION INFORMATION HAS NOT BEEN PROVIDED FOR THIS PROJECT. IF FURTHER INFORMATION IS NEEDED, PLEASE CONTACT THE LOCATION AND SURVEYS UNIT.
- Ⓢ INDICATES GEODETIC CONTROL MONUMENTS USED OR SET FOR HORIZONTAL PROJECT CONTROL BY THE NCDOT LOCATION AND SURVEYS UNIT.
 PROJECT CONTROL ESTABLISHED USING GLOBAL POSITIONING SYSTEM.
 NETWORK ESTABLISHED FROM EXISTING HARN MONUMENTATION
 SEE GPS CALIBRATION SHEET FOR HORIZONTAL AND VERTICAL COORDINATE VALUES.

NOTE: DRAWING NOT TO SCALE

6/2/99
 11/23/2015
 R:\Roadway\Proj\W5518_ControlSheet_1C.dgn