

**This electronic collection of documents is provided  
for the convenience of the user  
and is Not a Certified Document –**

**The documents contained herein were originally issued  
and sealed by the individuals whose names and license  
numbers appear on each page, on the dates appearing  
with their signature on that page.**

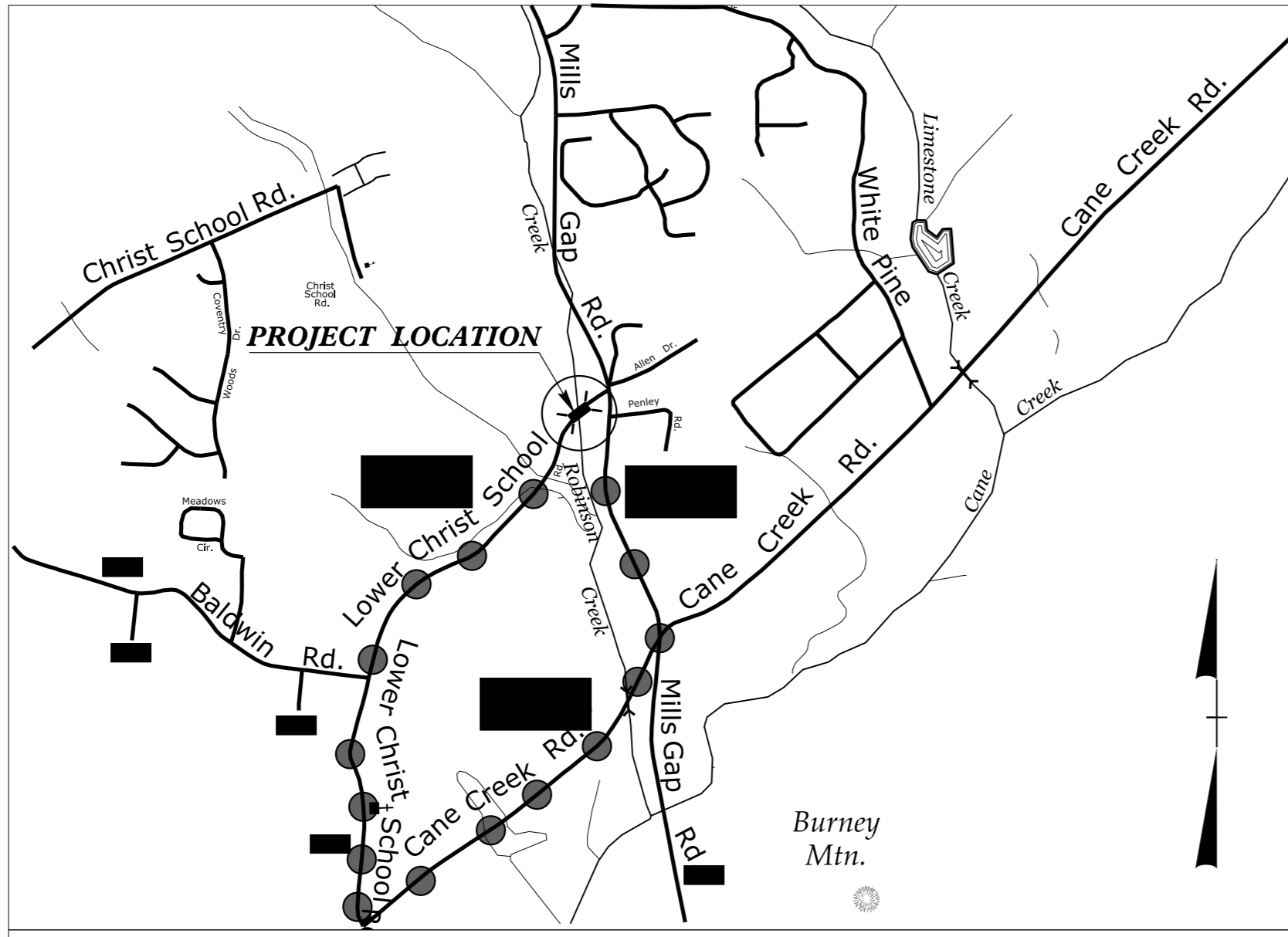
**This file or an individual page  
shall not be considered a certified document.**

09/08/99

See Sheet 1-A For Index of Sheets

T.I.P. NO.	SHEET NO.
B-5244	UO-1

**TIP PROJECT: B-5244**



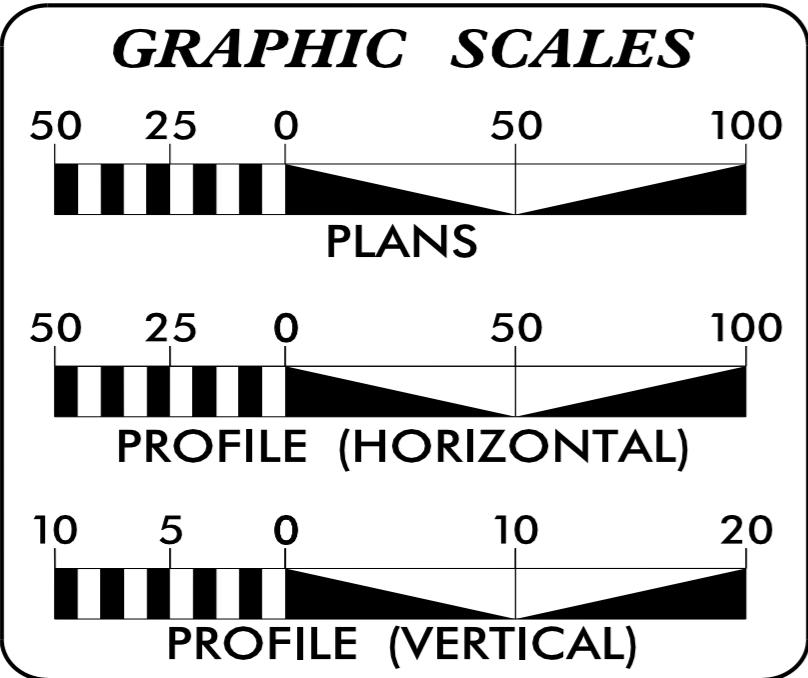
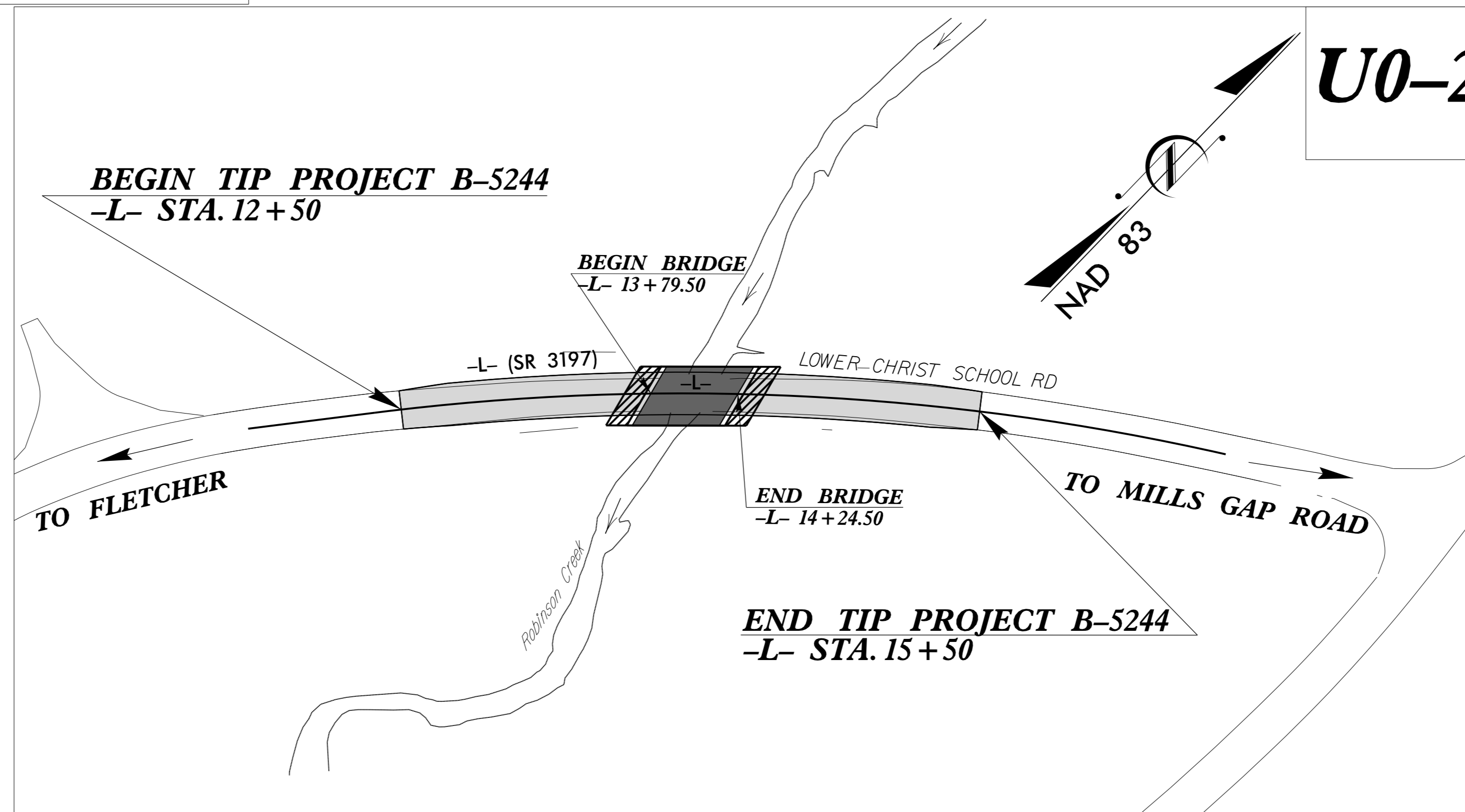
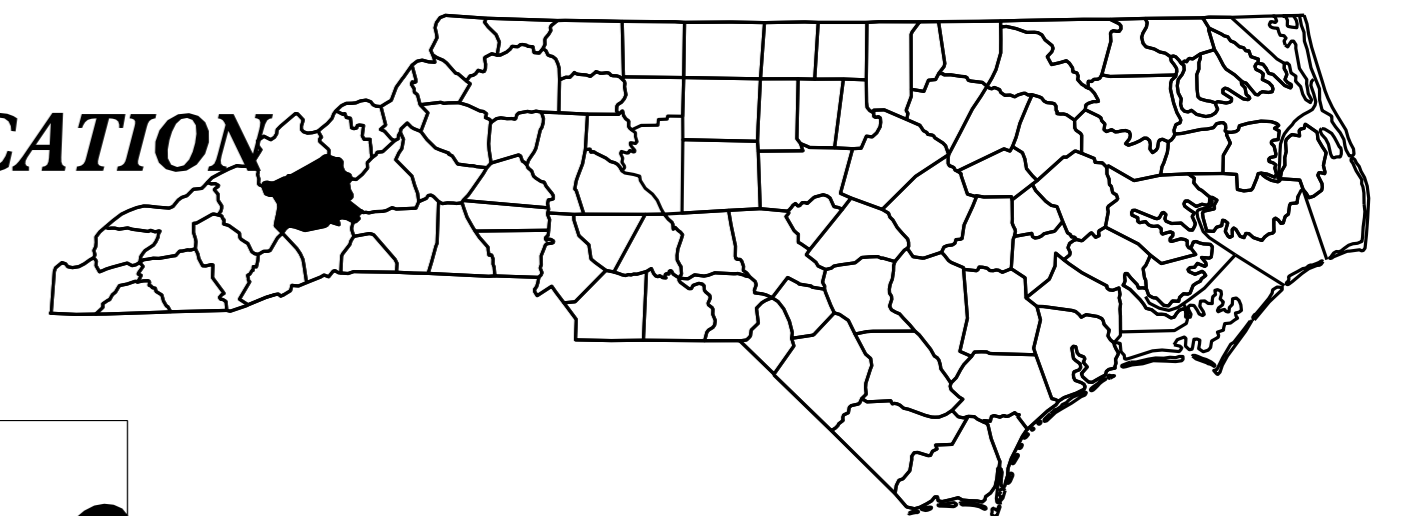
**VICINITY MAP** ●—● OFFSITE DETOUR

STATE OF NORTH CAROLINA  
DIVISION OF HIGHWAYS

**UTILITIES BY OTHERS PLANS  
BUNCOMBE COUNTY**


**LOCATION: BRIDGE NO. 363 OVER ROBINSON  
CREEK ON SR 3197**

**TYPE OF WORK: POWER AND TELEPHONE LINE RELOCATION**



INDEX OF SHEETS	
SHEET NO.	DESCRIPTION
UO-1	TITLE SHEET
UO-2	UTILITY BY OTHERS PLAN SHEETS

UTILITY OWNERS ON PROJECT
(A) DUKE ENERGY PROGRESS
(B) AT&T



PREPARED IN THE OFFICE OF:  
**DIVISION OF HIGHWAYS  
 UTILITIES UNIT  
 UTILITIES ENGINEERING**

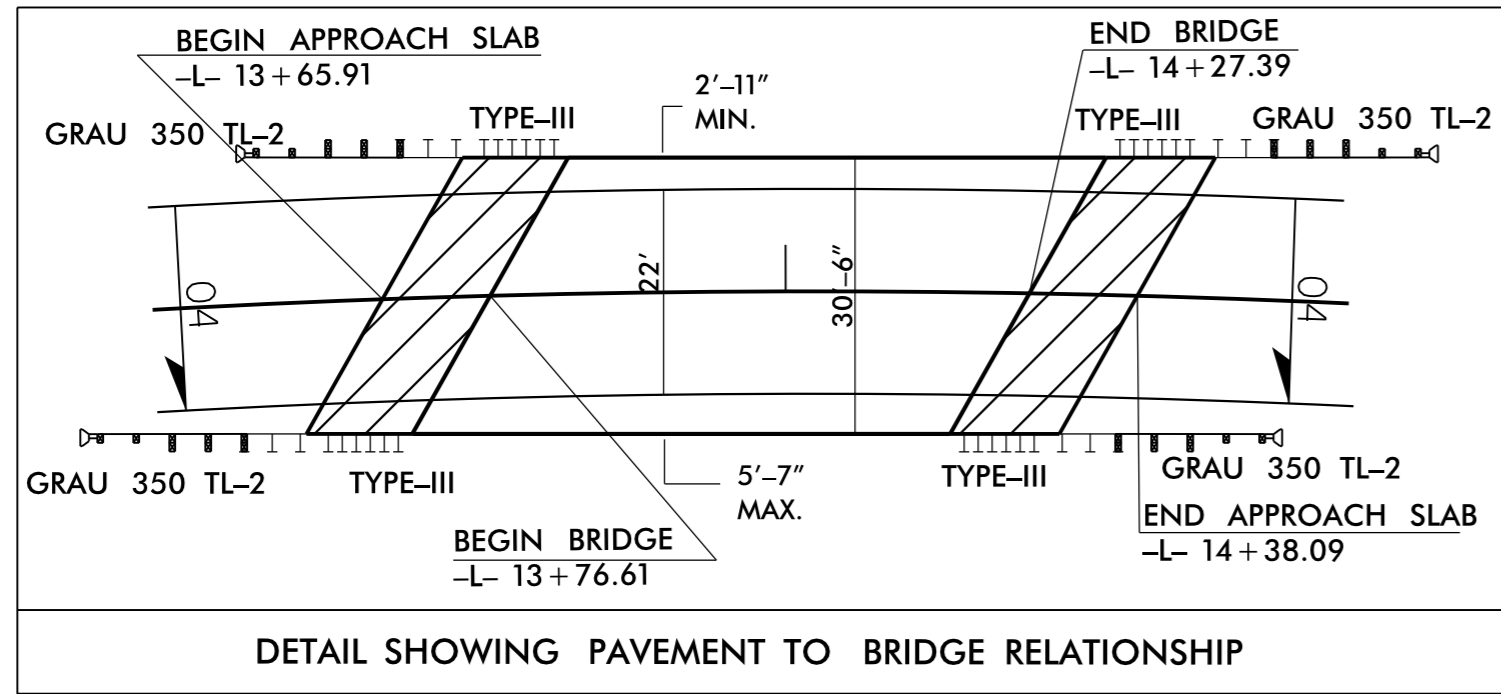
1555 MAIL SERVICES CENTER  
 RALEIGH, NC 27699-1555  
 PHONE (919) 707-6690  
 FAX (919) 250-4151

**Roger Worthington, P.E.** UTILITIES SECTION ENGINEER  
**CARL BARCLAY, P.E.** UTILITIES SQUAD LEADER PROJECT ENGINEER  
**ALI KOUCHEKI, P.E.** UTILITIES PROJECT DESIGNER

17-NOV-2015 12:05  
R:\Utilities\Engineering\UC\Proj\B5244\_ut\_fsh\_U01\_psh.dgn  
\$\$\$\$\$USERNAME\$\$\$\$\$

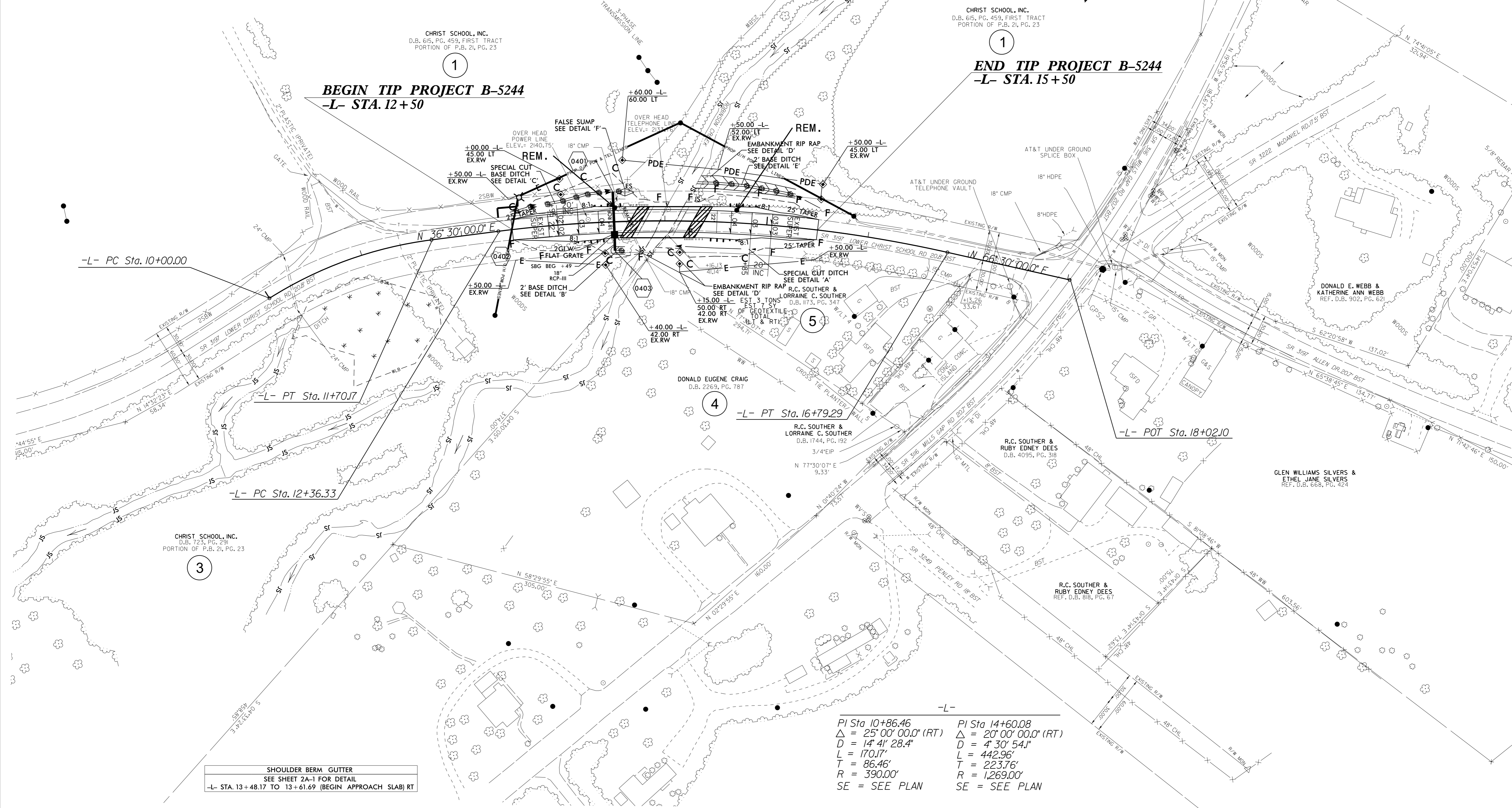
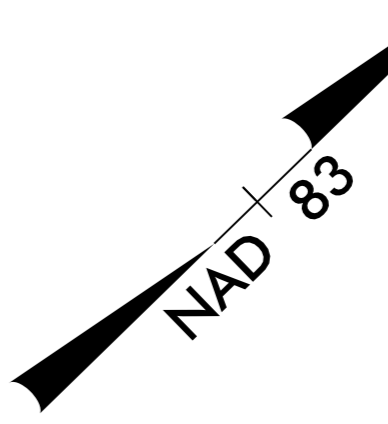
UTILITIES BY OTHERS

NOTE:  
ALL PROPOSED UTILITY WORK SHOWN ON THIS SHEET WILL BE DONE BY OTHERS. NO PAYMENT WILL BE MADE TO THE CONTRACTOR FOR PROPOSED UTILITY WORK SHOWN ON THIS SHEET.



10

15



**BEGIN TIP PROJECT B-5244**  
-L- STA. 12+50

**END TIP PROJECT B-5244**  
-L- STA. 15+50

-L-	PI Sta 10+86.46	PI Sta 14+60.08
	$\Delta = 25^{\circ}00'00.0''$ (RT)	$\Delta = 20^{\circ}00'00.0''$ (RT)
	D = 14' 41" 28.4"	D = 4' 30" 54.1"
	L = 170.17'	L = 442.96'
	T = 86.46'	T = 223.76'
	R = 390.00'	R = 1,269.00'
	SE = SEE PLAN	SE = SEE PLAN

SHOULDER BERM GUTTER  
SEE SHEET 2A-1 FOR DETAIL  
-L- STA. 13+48.17 TO 13+61.69 (BEGIN APPROACH SLAB) RT

5/14/99

17-NOV-2015 11:40 UC:\P\o\B-5244\Ut\_uoput.dgn